



London Borough of Sutton **Local Plan**

## Green Belt and Metropolitan Open Land Review **Appendix 1**

June 2015



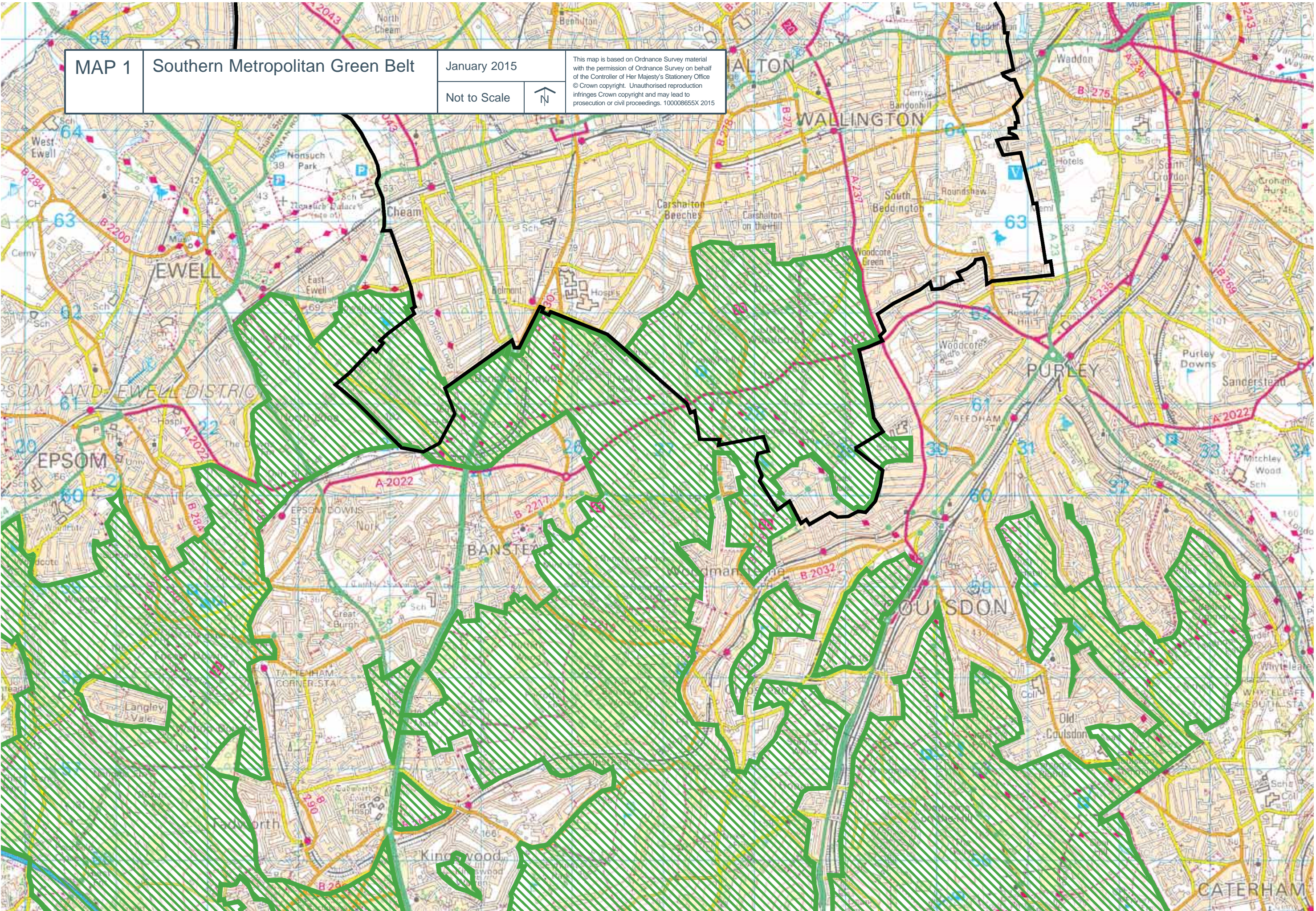


## INDEX TO APPENDIX 1

<b>MAP 1</b>		Southern Metropolitan Green Belt	4
<b>MAP 2</b>		South London Metropolitan Open Land	5
<b>MAP 3</b>	GB1	Cuddington Green Belt Map	6
<b>MAP 4</b>	GB1	Cuddington Green Belt Photograph	7
<b>MAP 5</b>	GB2	Woodcote Green Belt Map	8
<b>MAP 6</b>	GB2	Woodcote Green Belt Photograph	9
<b>MAP 7</b>	MOL1	Bandon Hill Cemetery and Allotments Map	10
<b>MAP 8</b>	MOL1	Bandon Hill Cemetery and Allotments Photograph	11
<b>MAP 9</b>	MOL2	Beddington/Mitcham Area (Northern Area) Map	12
<b>MAP 10</b>	MOL2	Beddington/Mitcham Area (Northern Area) Photograph	13
<b>MAP 11</b>	MOL2	Beddington/Mitcham Area (Southern Area) Map	14
<b>MAP 12</b>	MOL2	Beddington/Mitcham Area (Southern Area) Photograph	15
<b>MAP 13</b>	MOL3	Beddington Park and Carew Manor Map	16
<b>MAP 14</b>	MOL3	Beddington Park and Carew Manor Photograph	17
<b>MAP 15</b>	MOL4	Cheam Park and Recreation Ground Map	18
<b>MAP 16</b>	MOL4	Cheam Park and Recreation Ground Photograph	19
<b>MAP 17</b>	MOL5	Green Lane School Playing Fields and Adjoining Land Map	20
<b>MAP 18</b>	MOL5	Green Lane School Playing Fields and Adjoining Land Photograph	21
<b>MAP 19</b>	MOL6	Grove Park and Carshalton Ponds Map	22
<b>MAP 20</b>	MOL6	Grove Park and Carshalton Ponds Photograph	23
<b>MAP 21</b>	MOL7	Land North of Goat Road Map	24
<b>MAP 22</b>	MOL7	Land North of Goat Road Photograph	25
<b>MAP 23</b>	MOL8	Mill Green Map	26
<b>MAP 24</b>	MOL8	Mill Green Photograph	27
<b>MAP 25</b>	MOL9	Poulter Park and Playing Fields Map	28
<b>MAP 26</b>	MOL9	Poulter Park and Playing Fields Photograph	29
<b>MAP 27</b>	MOL10	Reigate Avenue Recreation Ground Map	30
<b>MAP 28</b>	MOL10	Reigate Avenue Recreation Ground Photograph	31
<b>MAP 29</b>	MOL11	Rosehill Recreation Ground Map	32
<b>MAP 30</b>	MOL11	Rosehill Recreation Ground Photograph	33
<b>MAP 31</b>	MOL12	Rosehill Park East Map	34
<b>MAP 32</b>	MOL12	Rosehill Park East Photograph	35

<b>MAP 33</b>	MOL13	Roundshaw Park Map	36
<b>MAP 34</b>	MOL13	Roundshaw Park Photograph	37
<b>MAP 35</b>	MOL14	St Elphege's Primary School Playing Field Map	38
<b>MAP 36</b>	MOL14	St Elphege's Primary School Playing Field Photograph	39
<b>MAP 37</b>	MOL15	St Helier Open Space Map	40
<b>MAP 38</b>	MOL15	St Helier Open Space Photograph	41
<b>MAP 39</b>	MOL16	Surrey Tennis and Country Club Map	42
<b>MAP 40</b>	MOL16	Surrey Tennis and Country Club Photograph	43
<b>MAP 41</b>	MOL17	Sutton Cemetery, Kimpton Linear Park and Open Space Map	44
<b>MAP 42</b>	MOL17	Sutton Cemetery, Kimpton Linear Park and Open Space Photograph	45
<b>MAP 43</b>	MOL18	Sutton Common Recreation Ground Map	46
<b>MAP 44</b>	MOL18	Sutton Common Recreation Ground Photograph	47
<b>MAP 45</b>	MOL19	Thomas Wall Park Map	48
<b>MAP 46</b>	MOL19	Thomas Wall Park Photograph	49
<b>MAP 47</b>	MOL20	Wilson's School Playing Fields Map	50
<b>MAP 48</b>	MOL20	Wilson's School Playing Fields Photograph	51
<b>MAP 49</b>	MOL21	Mayflower Park, Buckland Way Recreation Ground and Allotments Map	52
<b>MAP 50</b>	MOL21	Mayflower Park, Buckland Way Recreation Ground and Allotments Photograph	53

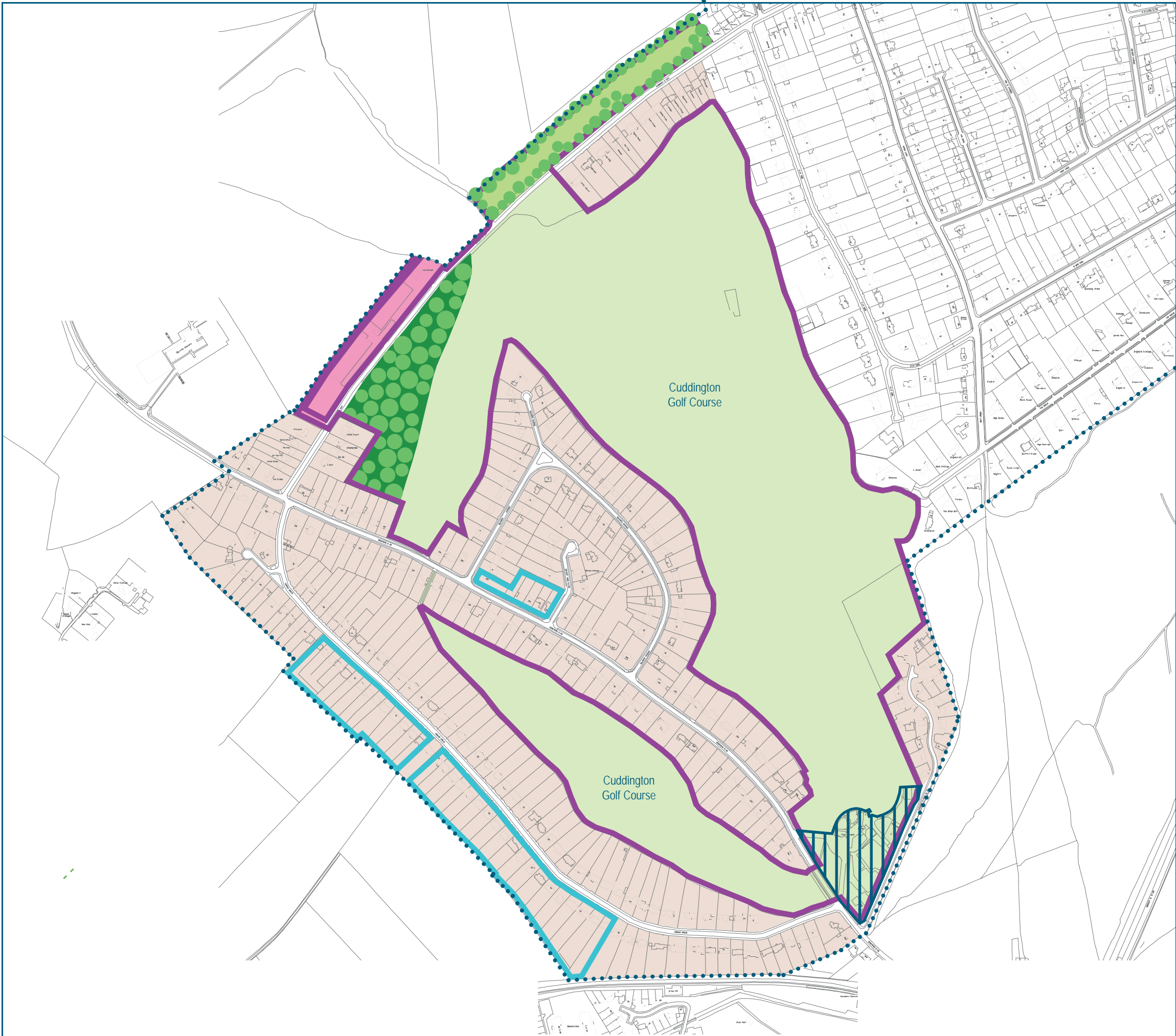












MAP 3

Cuddington  
Designations, Land Use & Boundaries

- Site of Importance for Nature Conservation
- Golf Course
- Golf Course Infrastructure
- Woodland
- Parkland and Trees
- Nursery
- Residential
- TPO Properties
- Borough Boundary

January 2015

Not to Scale



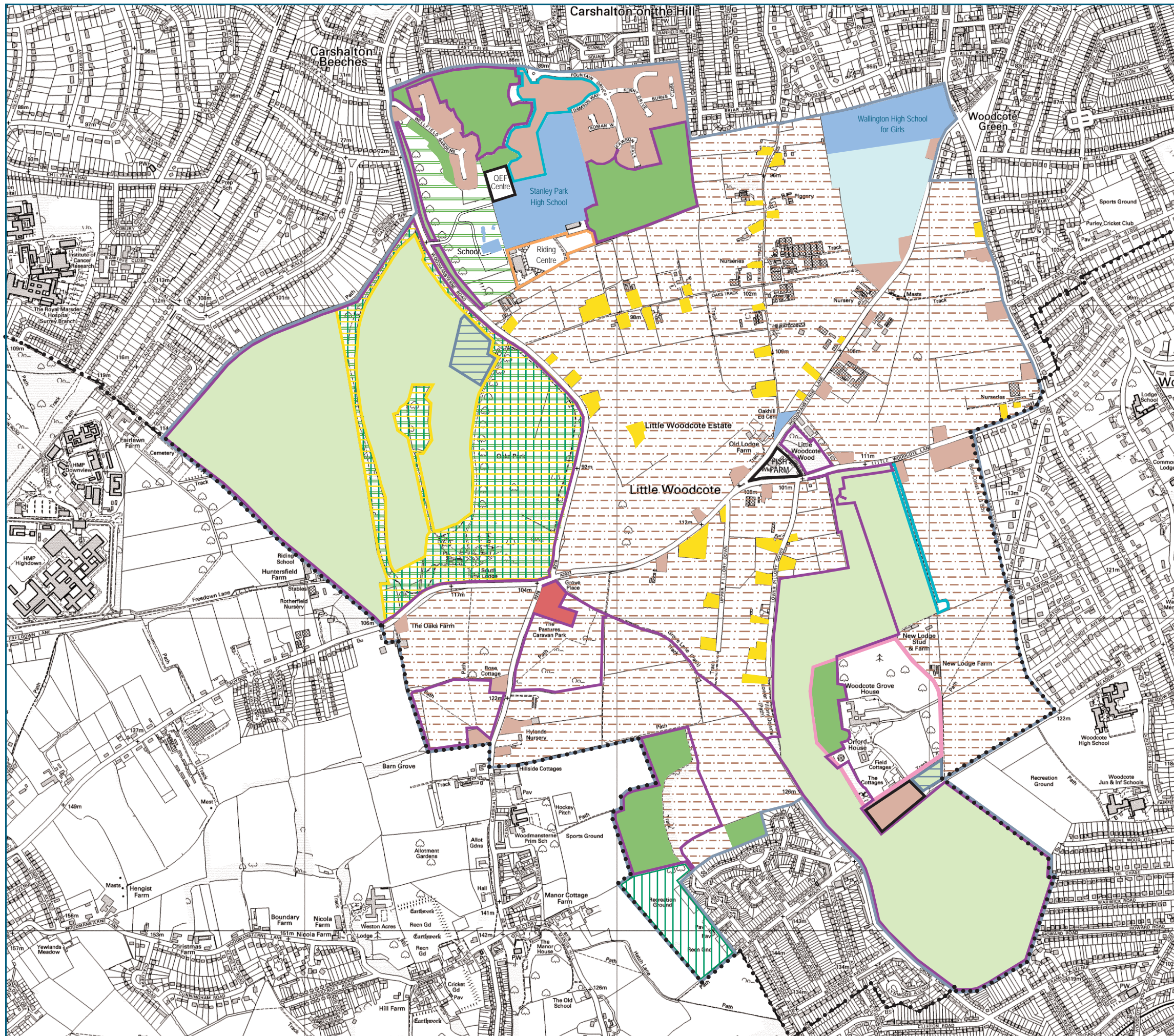
This map is based on Ordnance Survey material with the permission of Ordnance Survey on behalf of the Controller of Her Majesty's Stationery Office © Crown copyright. Unauthorised reproduction infringes Crown copyright and may lead to prosecution or civil proceedings. 100008655X 2015





MAP 4	
Cuddington Green Belt	
<div><div></div> Green Belt Boundary</div> <div><div></div> Borough Boundary</div>	
January 2015	<small>This map is based on Ordnance Survey material with the permission of Ordnance Survey on behalf of the Controller of Her Majesty's Stationery Office © Crown copyright. Unauthorised reproduction infringes Crown copyright and may lead to prosecution or civil proceedings. 100008655X 2015</small>
Not to Scale	





## MAP 5

### Woodcote Designations Land Use & Boundaries

- Green Belt Boundary
- Site of Importance for Nature Conservation
- Farmland
- Residential
- Industry
- Industry and Residential
- Public Open Space
- Original Smallholdings
- TPO
- Golf Course
- Golf Course Infrastructure
- Woodland
- Parkland and Trees
- Historic Park & Gardens
- Gypsy and Traveller Sites
- Care Home
- School
- Plant Nursery
- Riding Centre
- Agricultural Infrastructure
- Borough Boundary

January 2015

Not to Scale



This map is based on Ordnance Survey material with the permission of Ordnance Survey on behalf of the Controller of Her Majesty's Stationery Office © Crown copyright. Unauthorised reproduction infringes Crown copyright and may lead to prosecution or civil proceedings. 100008655X 2015





MAP 6	
Woodcote Green Belt	
<div><div></div> Green Belt Boundary</div> <div><div></div> Borough Boundary</div>	
January 2015	<small>This map is based on Ordnance Survey material with the permission of Ordnance Survey on behalf of the Controller of Her Majesty's Stationery Office © Crown copyright. Unauthorised reproduction infringes Crown copyright and may lead to prosecution or civil proceedings. 100008655X 2015</small>
Not to Scale	





# MAP 7

## Bandon Hill Cemetery & Allotments Designations, Land Use & Boundaries

Whole area covered by:

- Green Chain
- Wandle Valley Regional Park

- Site of Importance for Nature Conservation
- Green Corridor
- Cemetery
- Cemetery Infrastructure
- Safeguarded Burial Space
- Allotments

January 2015

Not to Scale



This map is based on Ordnance Survey material with the permission of Ordnance Survey on behalf of the Controller of Her Majesty's Stationery Office © Crown copyright. Unauthorised reproduction infringes Crown copyright and may lead to prosecution or civil proceedings. 100008655X 2015





## MAP 8

### Bandon Hill Cemetery & Allotments Metropolitan Open Land

Metropolitan Open Land Boundary

Borough Boundary

January 2015

Not to Scale



This map is based on Ordnance Survey material with the permission of Ordnance Survey on behalf of the Controller of Her Majesty's Stationery Office © Crown copyright. Unauthorised reproduction infringes Crown copyright and may lead to prosecution or civil proceedings. 100008655X 2015





## MAP 9

### Beddington Farmlands (North) Designations, Land Use & Boundaries

Whole area covered by:

- Metropolitan Green Chain
- Site of Importance for Nature Conservation

Wandle Valley Regional Park

Sludge Beds / Lagoons

Go-Kart track

Unofficial Play Space

Built Development

Woodland

Scrubland

Isolated Trees (indicative)

Pylon and Line

ERF Development Area

Primary School Development Area

Safeguarded Minerals Area

Lake / ditches

Wet Grassland

Grassland

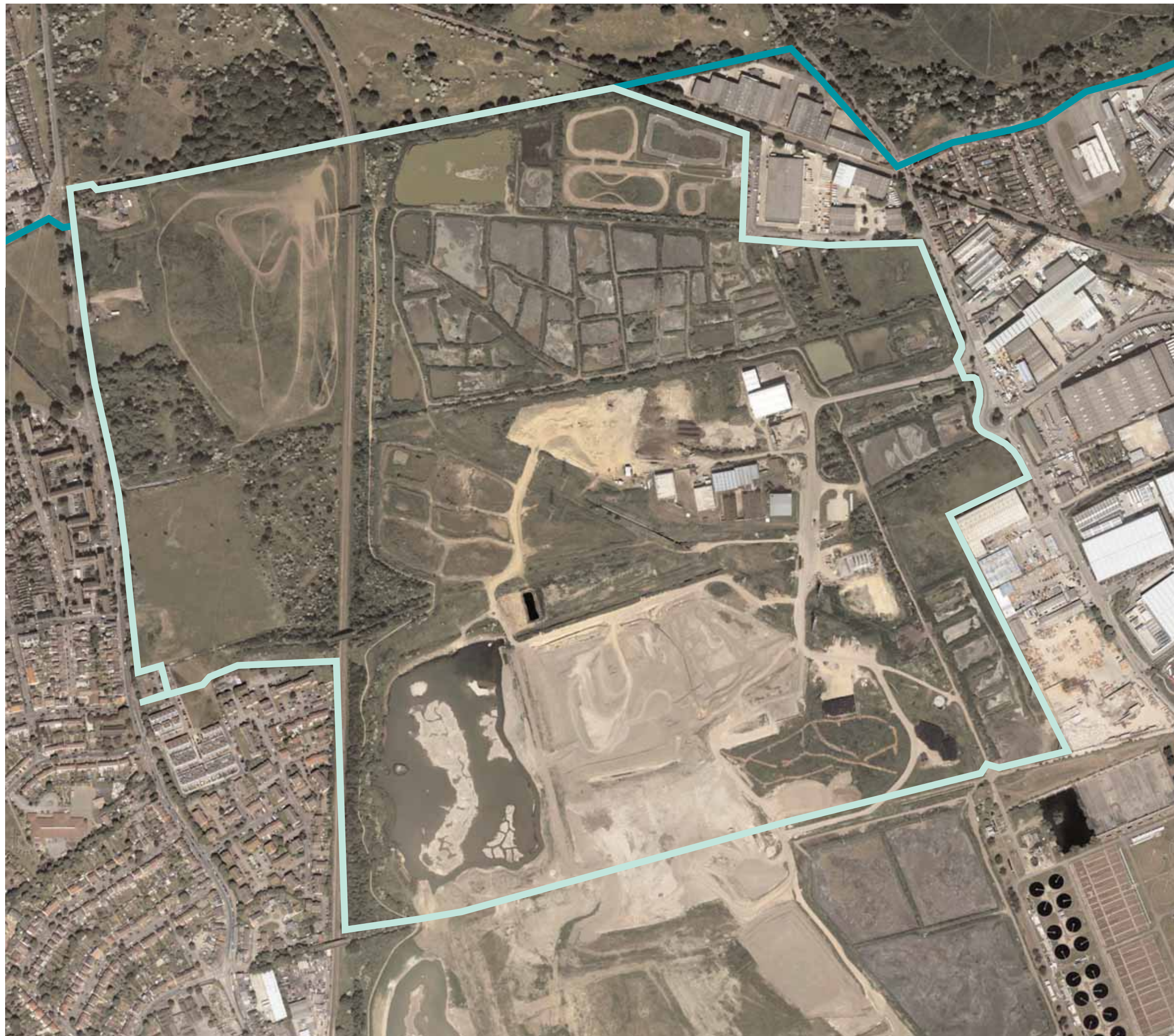
January 2015

Not to Scale



This map is based on Ordnance Survey material with the permission of Ordnance Survey on behalf of the Controller of Her Majesty's Stationery Office © Crown copyright. Unauthorised reproduction infringes Crown copyright and may lead to prosecution or civil proceedings. 100008655X 2015





## MAP 10

### Beddington Farmlands North Metropolitan Open Land

Metropolitan Open Land Boundary

Borough Boundary

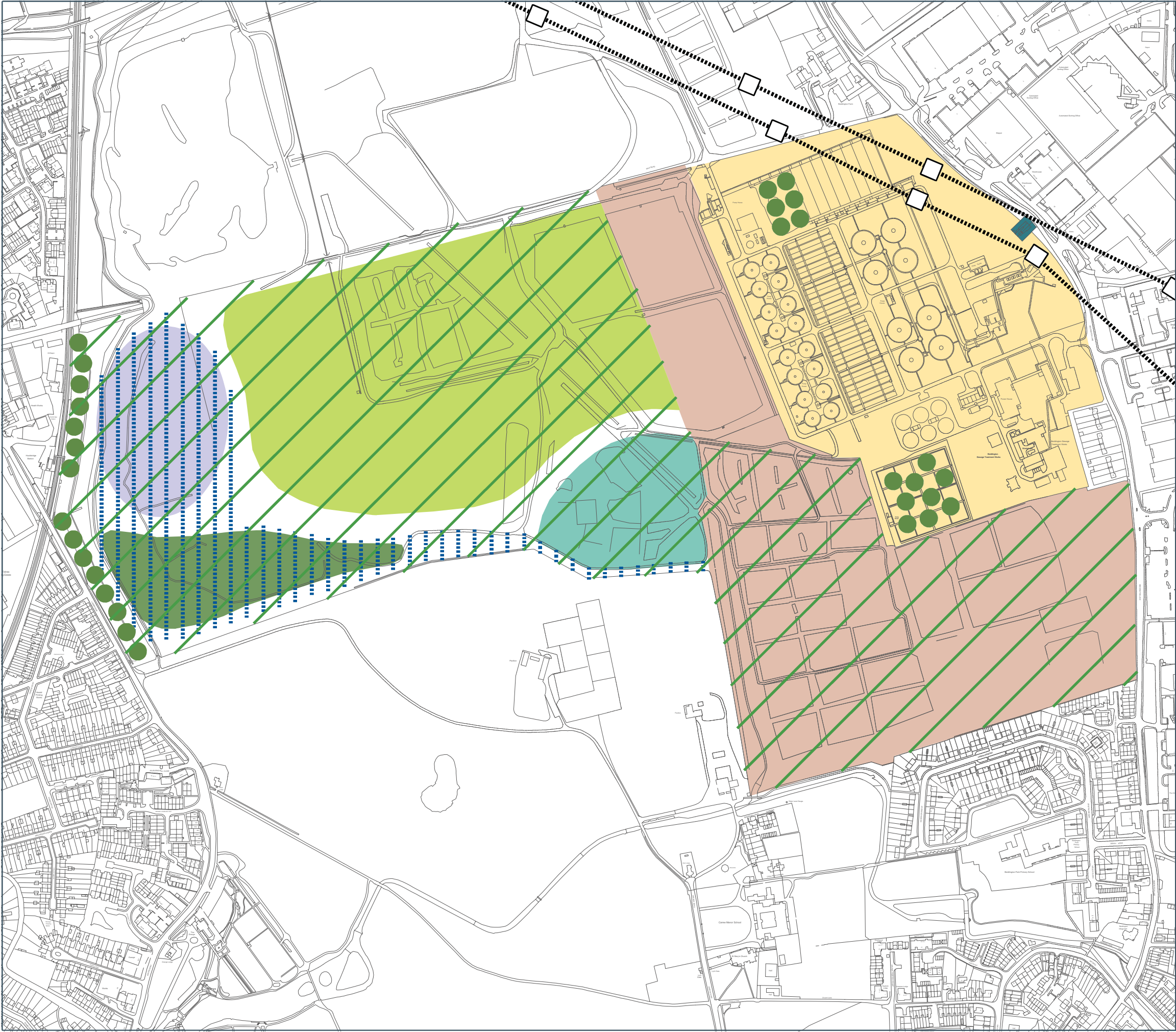
January 2015

Not to Scale



This map is based on Ordnance Survey material with the permission of Ordnance Survey on behalf of the Controller of Her Majesty's Stationery Office © Crown copyright. Unauthorised reproduction infringes Crown copyright and may lead to prosecution or civil proceedings. 100008655X 2015





MAP 11

Beddington Farmlands (South)  
Designations, Land Use & Boundaries

Whole area covered by:

- Metropolitan Green Chain
- Site of Importance for Nature Conservation

Wandle Valley Regional Park

Sludge Beds / Lagoons

Sewage Works

Built Development

Isolated Trees (indicative)

Pylon and Line

Southern Lake

Reed Bed

Wet Grassland

Grassland

Flood Risk

January 2015

Not to Scale



This map is based on Ordnance Survey material with the permission of Ordnance Survey on behalf of the Controller of Her Majesty's Stationery Office © Crown copyright. Unauthorised reproduction infringes Crown copyright and may lead to prosecution or civil proceedings. 100008655X 2015





## MAP 12

### Beddington Farmlands South Metropolitan Open Land

Metropolitan Open Land Boundary

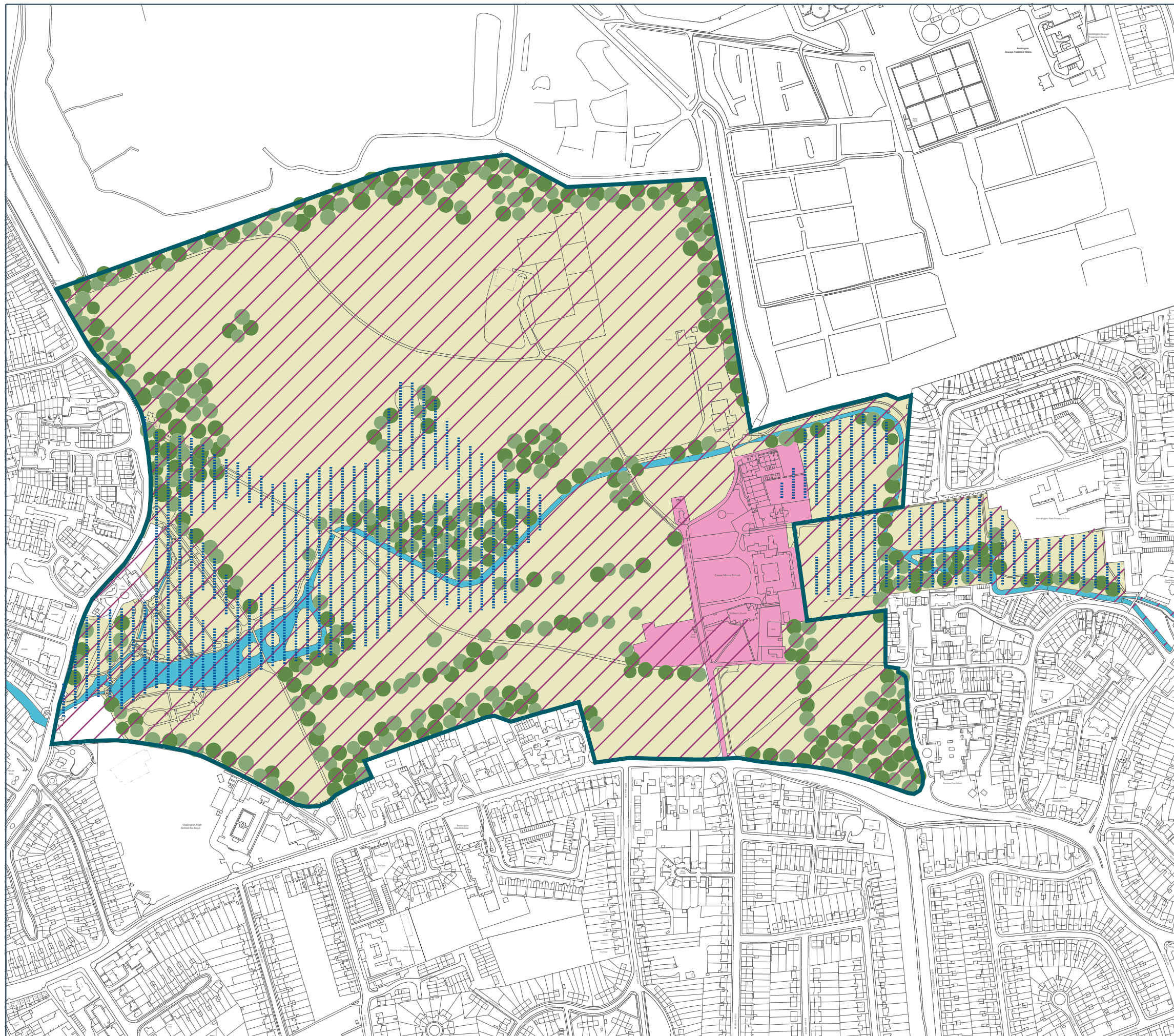
January 2015

Not to Scale



This map is based on Ordnance Survey material with the permission of Ordnance Survey on behalf of the Controller of Her Majesty's Stationery Office © Crown copyright. Unauthorised reproduction infringes Crown copyright and may lead to prosecution or civil proceedings. 100008655X 2015











## MAP 13

### Beddington Park Designations, Land Use & Boundaries

Whole area covered by:

- Conservation Area
- Metropolitan Green Chain
- Wandle Valley Regional Park

-  Historic Park and Garden
-  Area at Risk of Flooding
-  Site of Importance for Nature Conservation
-  Parkland and Woodland
-  River Wandle
-  Carew Manor Estate Buildings and Grounds

January 2015

Not to Scale



This map is based on Ordnance Survey material with the permission of Ordnance Survey on behalf of the Controller of Her Majesty's Stationery Office © Crown copyright. Unauthorised reproduction infringes Crown copyright and may lead to prosecution or civil proceedings. 100008655X 2015





MAP 14

Beddington Park  
Metropolitan Open Land

Metropolitan Open Land Boundary

January 2015

Not to Scale



This map is based on Ordnance Survey material with the permission of Ordnance Survey on behalf of the Controller of Her Majesty's Stationery Office © Crown copyright. Unauthorised reproduction infringes Crown copyright and may lead to prosecution or civil proceedings. 100008655X 2015





MAP 15

Cheam Park & Recreation Ground  
Designations, Land Use & Boundaries

Whole area covered by:

- Metropolitan Green Chain
- Public Open Space

- Site of Importance for Nature Conservation
- Parkland
- Playing Pitches
- Woodland
- Isolated Trees (indicative)
- Conservation Area
- Car Park
- Council Depot
- Pavilion
- Childrens Play Area
- Tennis Court
- Bowling Green
- Built Development

January 2015

Not to Scale



This map is based on Ordnance Survey material with the permission of Ordnance Survey on behalf of the Controller of Her Majesty's Stationery Office © Crown copyright. Unauthorised reproduction infringes Crown copyright and may lead to prosecution or civil proceedings. 100008655X 2015





MAP 16

Cheam Park  
Metropolitan Open Land

Metropolitan Open Land Boundary

Borough Boundary

January 2015

Not to Scale



This map is based on Ordnance Survey material with the permission of Ordnance Survey on behalf of the Controller of Her Majesty's Stationery Office © Crown copyright. Unauthorised reproduction infringes Crown copyright and may lead to prosecution or civil proceedings. 100008655X 2015





MAP 17

Green Lane Primary School Fields  
Designations, Land Use & Boundaries

Whole area covered by:  
● Metropolitan Green Chain

- Site of Importance for Nature Conservation
- Incidental Open Space
- School Playing Fields
- Trees (indicative)
- High Flood Risk
- Overhead Cable and Tower

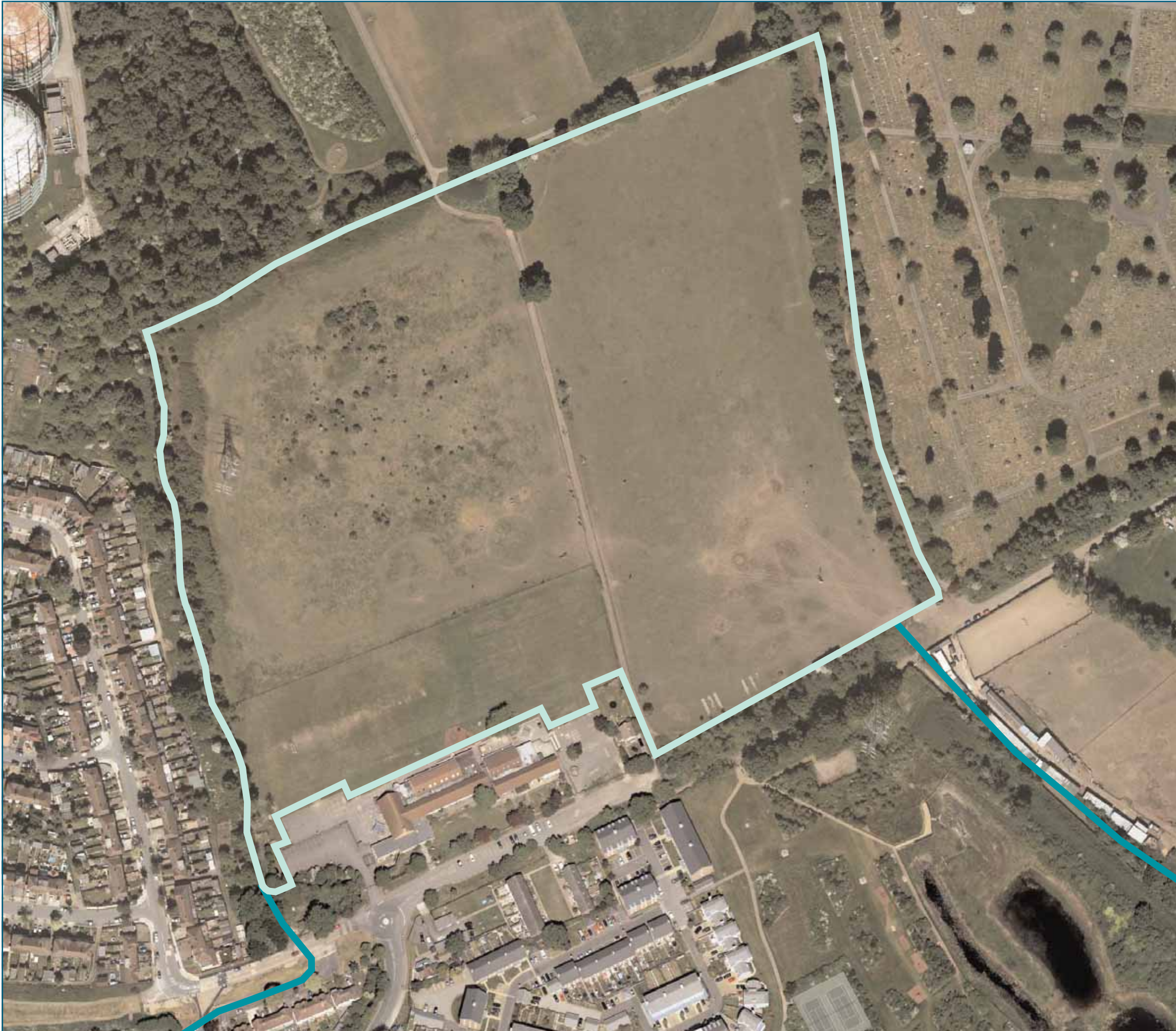
January 2015

Not to Scale



This map is based on Ordnance Survey material with the permission of Ordnance Survey on behalf of the Controller of Her Majesty's Stationery Office © Crown copyright. Unauthorised reproduction infringes Crown copyright and may lead to prosecution or civil proceedings. 100008655X 2015





MAP 18

Green Lane Primary School Fields  
Metropolitan Open Land

Metropolitan Open Land Boundary

Borough Boundary

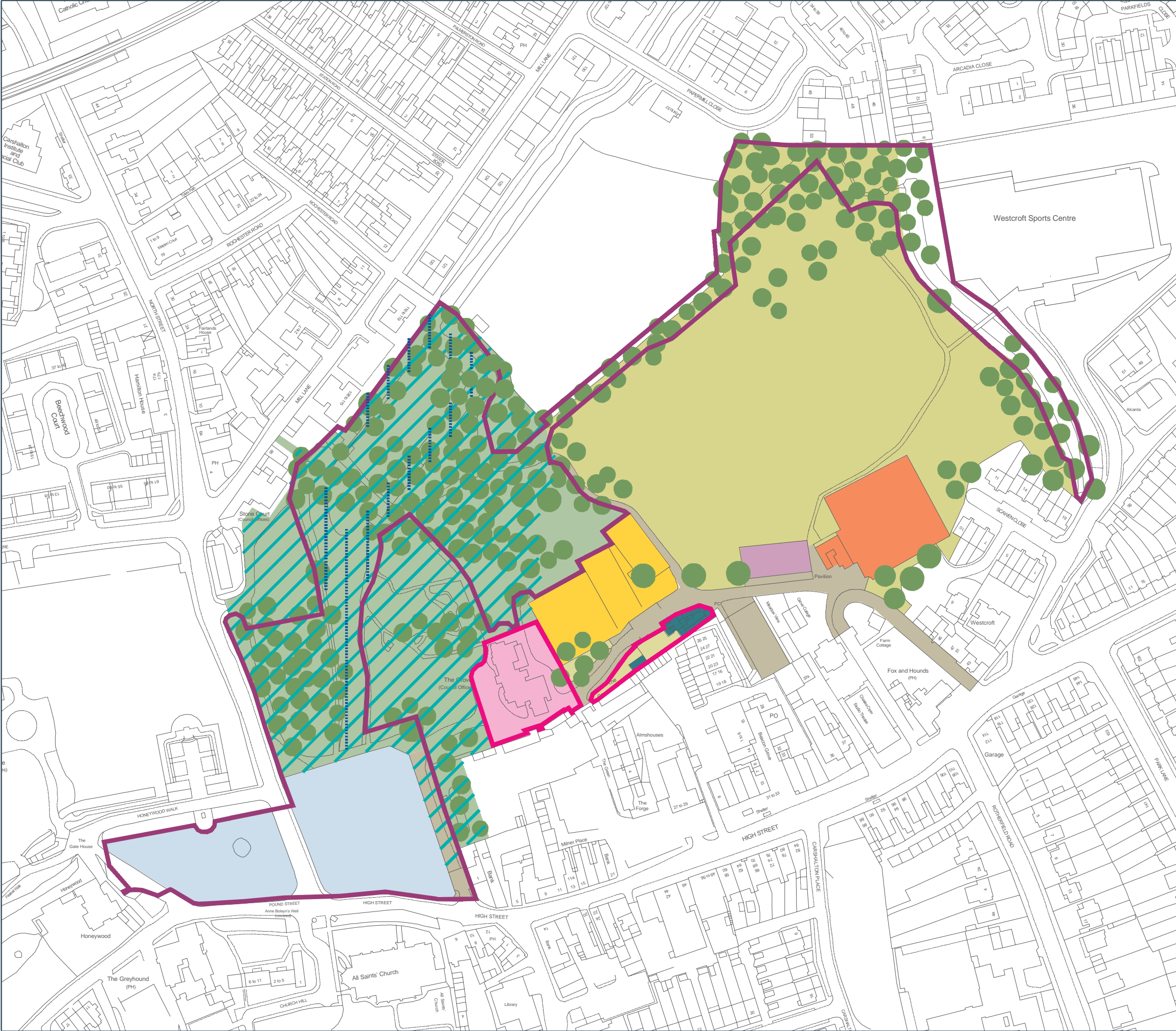
January 2015

Not to Scale



This map is based on Ordnance Survey material with the permission of Ordnance Survey on behalf of the Controller of Her Majesty's Stationery Office © Crown copyright. Unauthorised reproduction infringes Crown copyright and may lead to prosecution or civil proceedings. 100008655X 2015





MAP 19

Grove Park and Carshalton Ponds  
Designations, Land Use & Boundaries

- Whole area covered by:
- Metropolitan Green Chain
  - Conservation Area
  - Public Open Space
  - Wandle Valley Regional Park

- Historic Buildings
- The Grove (Historic House)
- Historic Park and Garden
- Formal Parkland and Water Features
- Parkland and Playing Fields
- MUGA
- Bowling Green and Pavilion
- Area at Risk of Flooding
- Children's Play Area
- SINC
- Trees
- Roads / Paths
- Built Development

January 2015

Not to Scale



This map is based on Ordnance Survey material with the permission of Ordnance Survey on behalf of the Controller of Her Majesty's Stationery Office © Crown copyright. Unauthorised reproduction infringes Crown copyright and may lead to prosecution or civil proceedings. 100008655X 2015





## MAP 20

### Grove Park & Carshalton Ponds Metropolitan Open Land

Metropolitan Open Land Boundary

January 2015

Not to Scale



This map is based on Ordnance Survey material with the permission of Ordnance Survey on behalf of the Controller of Her Majesty's Stationery Office © Crown copyright. Unauthorised reproduction infringes Crown copyright and may lead to prosecution or civil proceedings. 100008655X 2015





MAP 21

Land North of Goat Road  
Designations, Land Use & Boundaries

- Site boundary
- Whole area covered by:
  - Priority Community Regeneration Area
  - Wandle Valley Regional Park
  - Metropolitan Green Chain
- Site of Importance for Nature Conservation
- Industry
- Reservoir
- Area of High Flood Risk
- Line of Pylon
- Industry and Infrastructure
- Scrubland
- Isolated trees (indicative)

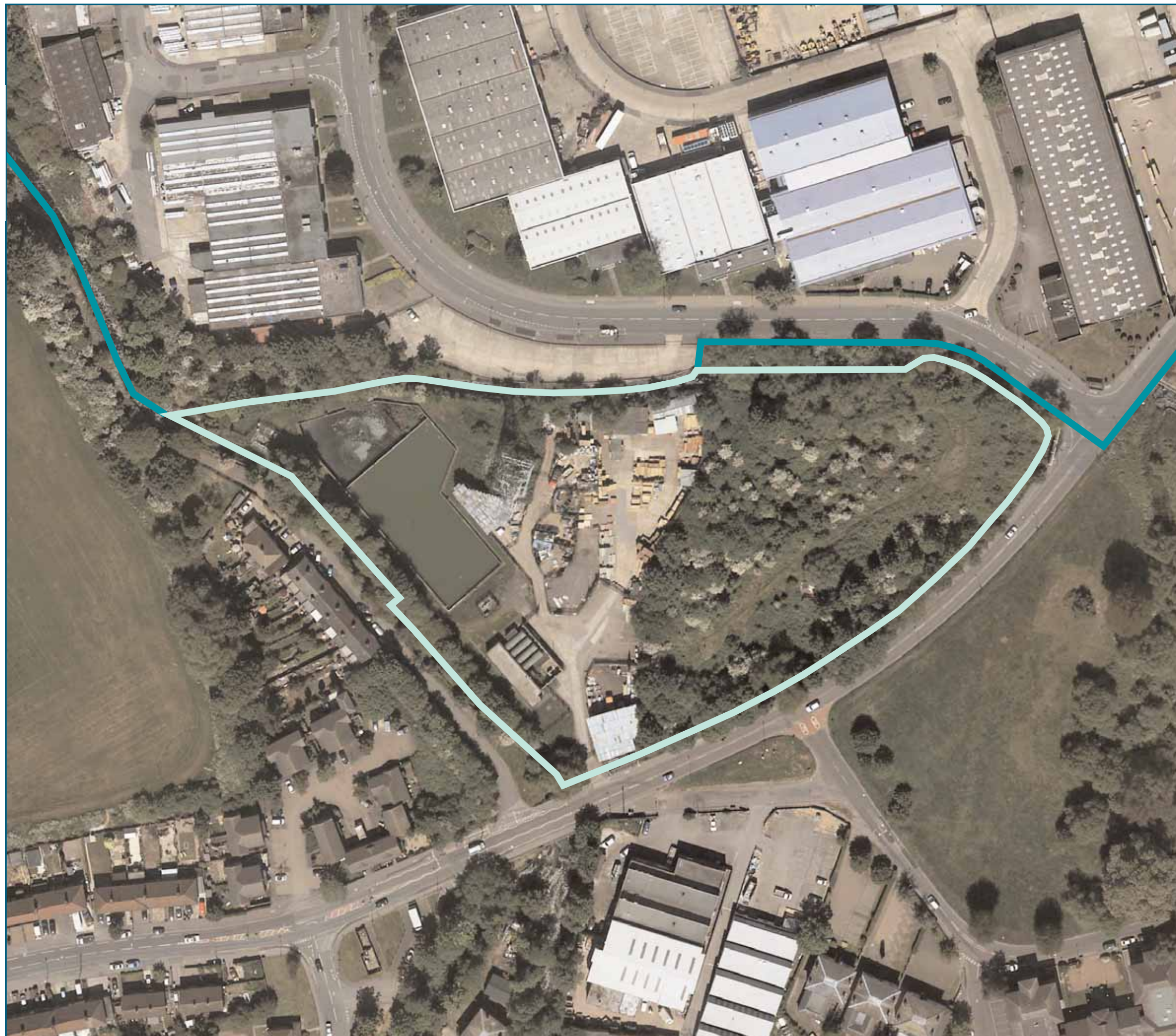
January 2015

Not to Scale



This map is based on Ordnance Survey material with the permission of Ordnance Survey on behalf of the Controller of Her Majesty's Stationery Office © Crown copyright. Unauthorised reproduction infringes Crown copyright and may lead to prosecution or civil proceedings. 100008655X 2015





## MAP 22

### Land North of Goat Road Metropolitan Open Land

Metropolitan Open Land Boundary

Borough Boundary

January 2015

Not to Scale



This map is based on Ordnance Survey material with the permission of Ordnance Survey on behalf of the Controller of Her Majesty's Stationery Office © Crown copyright. Unauthorised reproduction infringes Crown copyright and may lead to prosecution or civil proceedings. 100008655X 2015





MAP 23

Mill Green  
Designations, Land Use & Boundaries

- Whole area covered by:
- Priority Community Regeneration Area
  - Wandle Valley Regional Park
  - Metropolitan Green Chain
  - Public Open Space
  - Decentralised Opportunity Area
  - Site of Importance for Nature Conservation

Grassland

River Wandle

Seasonal Ditch

Area of High Flood Risk

Trees (Indicative)

Pylon and Line

January 2015

Not to Scale



This map is based on Ordnance Survey material with the permission of Ordnance Survey on behalf of the Controller of Her Majesty's Stationery Office © Crown copyright. Unauthorised reproduction infringes Crown copyright and may lead to prosecution or civil proceedings. 100008655X 2015





MAP 24

## Mill Green Metropolitan Open Land

 Metropolitan Open Land Boundary

 Borough Boundary

January 2015

Not to Scale



This map is based on Ordnance Survey material with the permission of Ordnance Survey on behalf of the Controller of Her Majesty's Stationery Office © Crown copyright. Unauthorised reproduction infringes Crown copyright and may lead to prosecution or civil proceedings. 100008655X 2015















MAP 25

**Poulter Park**  
Designations, Land Use and Boundaries

Whole area covered by:-

- Metropolitan Green Chain
- Public Open Space
- Wandle Valley Regional Park

-  Site of Importance for Nature Conservation
-  Parkland / Seasonal Sports Pitches
-  Woodland
-  Isolated Trees (Indicative)
-  Residential
-  TPO
-  Area at Risk of Flooding
-  Pavilions
-  Multi Utility Games Area
-  Pylon and Line

January 2015

Not to Scale



This map is based on Ordnance Survey material with the permission of Ordnance Survey on behalf of the Controller of Her Majesty's Stationery Office © Crown copyright. Unauthorised reproduction infringes Crown copyright and may lead to prosecution or civil proceedings. 100008655X 2015





MAP 26

Poulter Park  
Metropolitan Open Land

- Metropolitan Open Land Boundary
- Borough Boundary

January 2015

Not to Scale



This map is based on Ordnance Survey material with the permission of Ordnance Survey on behalf of the Controller of Her Majesty's Stationery Office © Crown copyright. Unauthorised reproduction infringes Crown copyright and may lead to prosecution or civil proceedings. 100008655X 2015












MAP 27

Reigate Avenue Recreation Ground  
Designations, Land Use & Boundaries

Whole area covered by:

- Metropolitan Green Chain
- Public Open Space
- Wandle Valley Regional Park

-  Green Corridor
-  Parkland
-  School Playing Fields
-  Trees (indicative)
-  Flood Risk
-  Pylon and Line
-  MUGA

January 2015

Not to Scale



This map is based on Ordnance Survey material with the permission of Ordnance Survey on behalf of the Controller of Her Majesty's Stationery Office © Crown copyright. Unauthorised reproduction infringes Crown copyright and may lead to prosecution or civil proceedings. 100008655X 2015





MAP 28

Reigate Avenue Recreation Ground  
Metropolitan Open Land

Metropolitan Open Land Boundary

Borough Boundary

January 2015

Not to Scale



This map is based on Ordnance Survey material with the permission of Ordnance Survey on behalf of the Controller of Her Majesty's Stationery Office © Crown copyright. Unauthorised reproduction infringes Crown copyright and may lead to prosecution or civil proceedings. 100008655X 2015





MAP 29

Rosehill Recreation Ground  
Designations, Land Use & Boundaries

Whole area covered by:

- Metropolitan Green Chain
- Public Open Space
- Wandle Valley Regional Park

- Real Public Open Space
- Tennis Centre
- Tennis Centre Outdoor Courts
- Tennis Centre Parking and Servicing
- Open Space associated with Tennis Centre
- All Weather Pitch
- Bowling Green and Pavilion
- Public Tennis Courts
- MUGA
- Isolated Trees (Indicative)
- Tramlink (Indicative)
- Flood Risk
- Pylon and Line
- Electricity Sub Station

January 2015

Not to Scale



This map is based on Ordnance Survey material with the permission of Ordnance Survey on behalf of the Controller of Her Majesty's Stationery Office © Crown copyright. Unauthorised reproduction infringes Crown copyright and may lead to prosecution or civil proceedings. 100008655X 2015





MAP 30

Rosehill Recreation Ground  
Metropolitan Open Land

Metropolitan Open Land Boundary

January 2015

Not to Scale



This map is based on Ordnance Survey material with the permission of Ordnance Survey on behalf of the Controller of Her Majesty's Stationery Office © Crown copyright. Unauthorised reproduction infringes Crown copyright and may lead to prosecution or civil proceedings. 100008655X 2015





MAP 31

Rosehill Park East  
Designations, Land Use & Boundaries

Whole area covered by:

- Metropolitan Green Chain
- Public Open Space
- Wandle Valley Regional Park

-  Site of Importance for Nature Conservation
-  Parkland
-  Woodland
-  Isolated Trees (Indicative)
-  Tramlink (Indicative)
-  Pylon and Line

January 2015

Not to Scale



This map is based on Ordnance Survey material with the permission of Ordnance Survey on behalf of the Controller of Her Majesty's Stationery Office © Crown copyright. Unauthorised reproduction infringes Crown copyright and may lead to prosecution or civil proceedings. 100008655X 2015





MAP 32

Rosehill Park East  
Metropolitan Open Land

Metropolitan Open Land Boundary

January 2015

Not to Scale



This map is based on Ordnance Survey material with the permission of Ordnance Survey on behalf of the Controller of Her Majesty's Stationery Office © Crown copyright. Unauthorised reproduction infringes Crown copyright and may lead to prosecution or civil proceedings. 100008655X 2015





MAP 33

Roundshaw  
Designations, Land Use & Boundaries

- MUGA Pavilion and Parking
- Park
- Playing Fields
- Open Downs
- Site of Importance for Nature Conservation
- Allotments
- Children's Play Area
- Isolated Trees / Woodland
- Residential
- Tennis Courts / MUGAs
- Borough Boundary

January 2015

Not to Scale



This map is based on Ordnance Survey material with the permission of Ordnance Survey on behalf of the Controller of Her Majesty's Stationery Office © Crown copyright. Unauthorised reproduction infringes Crown copyright and may lead to prosecution or civil proceedings. 100008655X 2015





MAP 34

Roundshaw  
Metropolitan Open Land

Metropolitan Open Land Boundary

Borough Boundary

January 2015

Not to Scale



This map is based on Ordnance Survey material with the permission of Ordnance Survey on behalf of the Controller of Her Majesty's Stationery Office © Crown copyright. Unauthorised reproduction infringes Crown copyright and may lead to prosecution or civil proceedings. 100008655X 2015





MAP 35

St Elphege's Playing Field  
Designations, Land Use & Boundaries

Whole area covered by:

- Metropolitan Green Chain
- Public Open Space

 Tennis Court

 Isolated Tree (Indicative)

 Real Public Open Space

January 2015

Not to Scale



This map is based on Ordnance Survey material with the permission of Ordnance Survey on behalf of the Controller of Her Majesty's Stationery Office © Crown copyright. Unauthorised reproduction infringes Crown copyright and may lead to prosecution or civil proceedings. 100008655X 2015





MAP 36

St Elphege's Playing Field  
Metropolitan Open Land

Metropolitan Open Land Boundary

January 2015

Not to Scale



This map is based on Ordnance Survey material with the permission of Ordnance Survey on behalf of the Controller of Her Majesty's Stationery Office © Crown copyright. Unauthorised reproduction infringes Crown copyright and may lead to prosecution or civil proceedings. 100008655X 2015





MAP 37

St Helier Open Space  
Designations, Land Use & Boundaries

Whole area covered by:  
● Metropolitan Green Chain  
● Wandle Valley Regional Park

- Site of Importance for Nature Conservation
- Public Open Space
- Parkland (Predominantly)
- Woodland (Predominantly)
- Trees (Indicative)
- Area of Special Local Character
- David Weir Leisure Centre Enclosure
- MUGA
- Skate Park
- The Quad Youth Hub
- Pylon and Line

January 2015

Not to Scale



This map is based on Ordnance Survey material with the permission of Ordnance Survey on behalf of the Controller of Her Majesty's Stationery Office © Crown copyright. Unauthorised reproduction infringes Crown copyright and may lead to prosecution or civil proceedings. 100008655X 2015





MAP 38

St Helier Open Space  
Metropolitan Open Land

Metropolitan Open Land Boundary

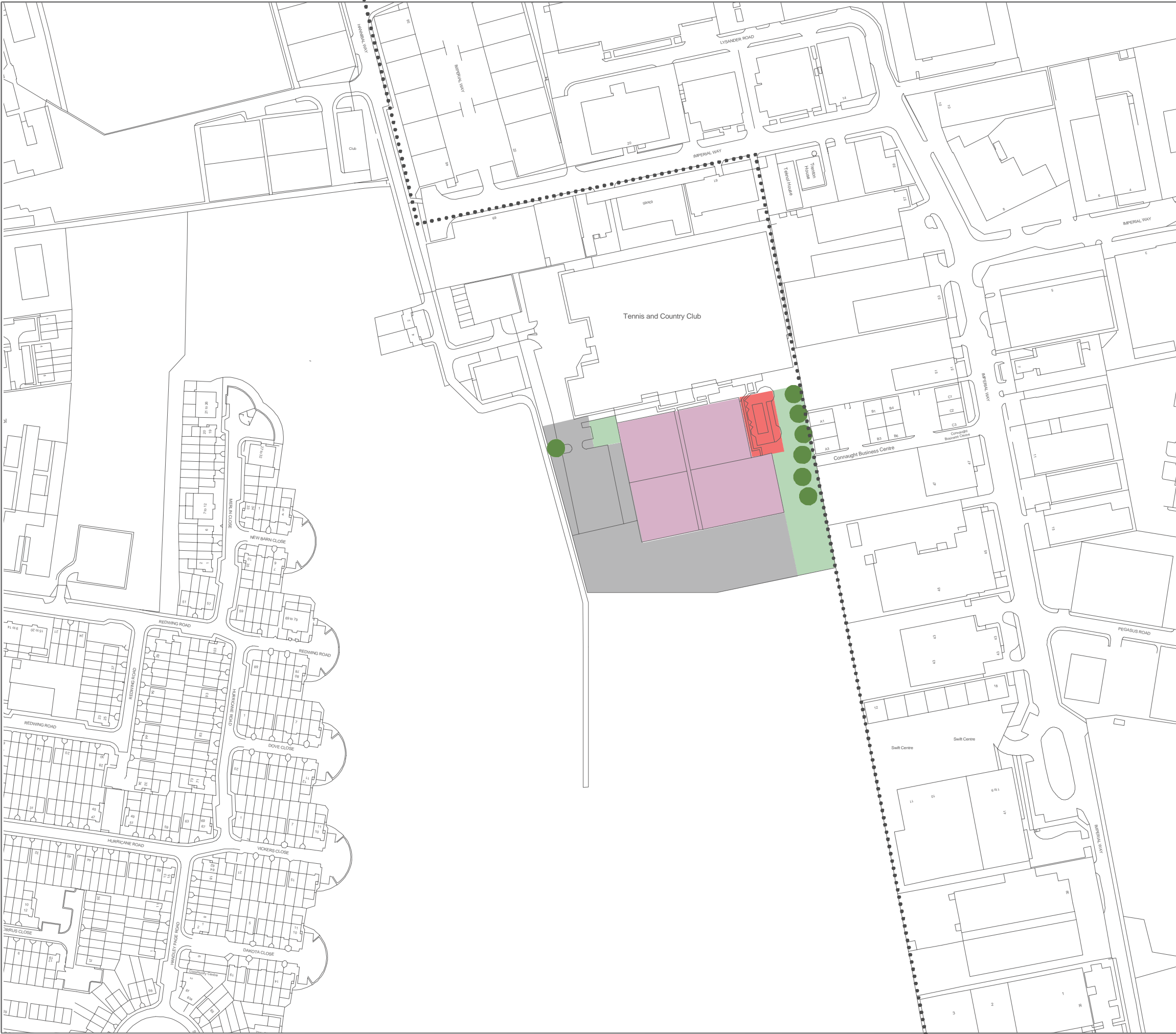
January 2015

Not to Scale



This map is based on Ordnance Survey material with the permission of Ordnance Survey on behalf of the Controller of Her Majesty's Stationery Office © Crown copyright. Unauthorised reproduction infringes Crown copyright and may lead to prosecution or civil proceedings. 100008655X 2015











MAP 39

Surrey Tennis Club  
Designations, Land Use & Boundaries

Whole area covered by:  
● Metropolitan Green Chain  
● Public Open Space

-  Parking
-  Trees (indicative)
-  Leisure Facility Building
-  Tennis Courts
-  Borough Boundary
-  Incidental Green Space

January 2015

Not to Scale



This map is based on Ordnance Survey material with the permission of Ordnance Survey on behalf of the Controller of Her Majesty's Stationery Office © Crown copyright. Unauthorised reproduction infringes Crown copyright and may lead to prosecution or civil proceedings. 100008655X 2015





MAP 40

Surrey Tennis Club  
Metropolitan Open Land

Metropolitan Open Land Boundary

Borough Boundary

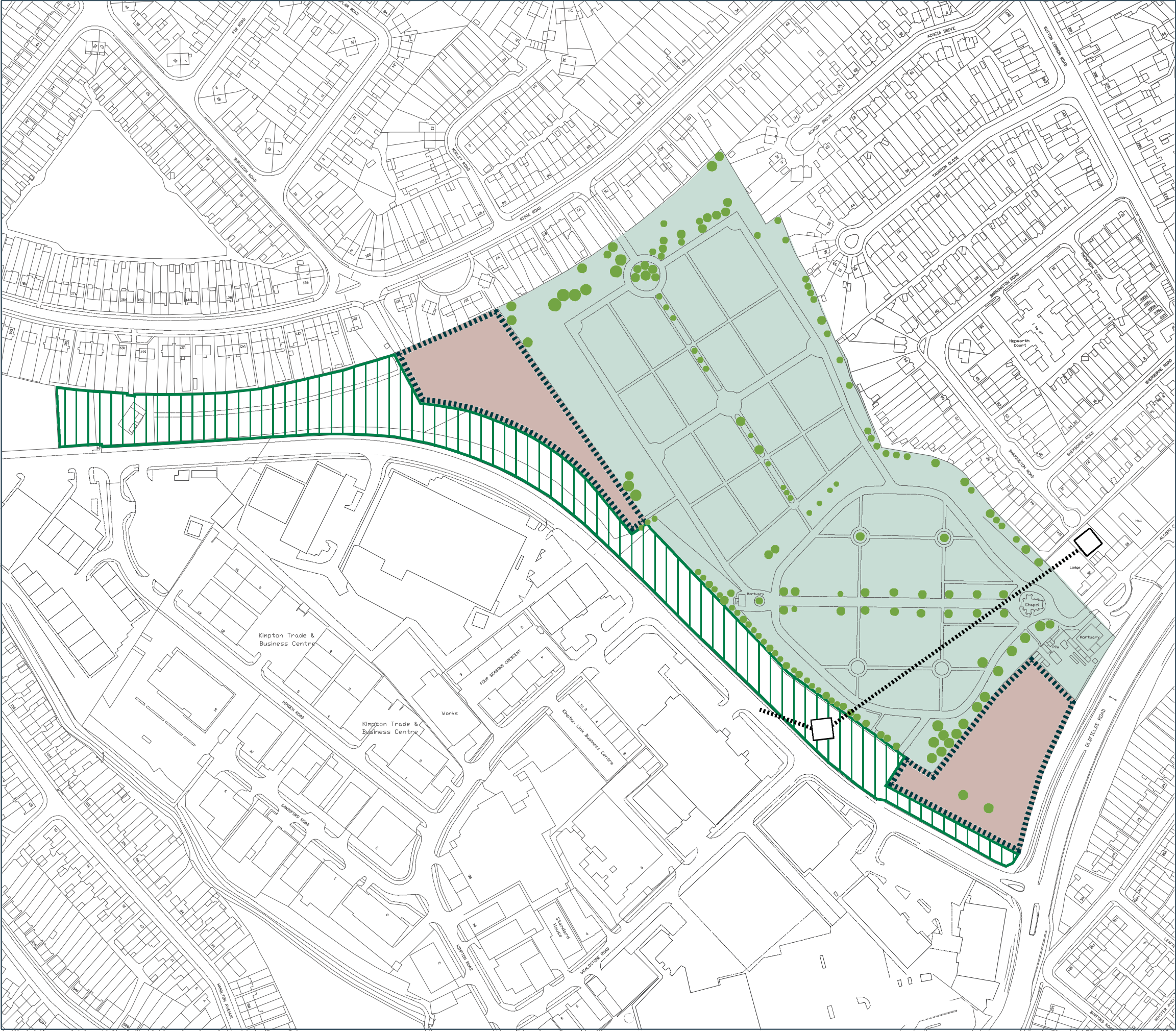
January 2015

Not to Scale



This map is based on Ordnance Survey material with the permission of Ordnance Survey on behalf of the Controller of Her Majesty's Stationery Office © Crown copyright. Unauthorised reproduction infringes Crown copyright and may lead to prosecution or civil proceedings. 100008655X 2015











MAP 41

Sutton Cemetery  
Designations, Land Use & Boundaries

Whole area is covered by:  
● Metropolitan Green Chain

-  Public Open Space
-  Cemetery and Cemetery Infrastructure
-  Land Safeguarded for Cemetery Extension
-  Unused Open Land
-  Isolated Trees (Indicative)
-  Pylon and Line

January 2015

Not to Scale



This map is based on Ordnance Survey material with the permission of Ordnance Survey on behalf of the Controller of Her Majesty's Stationery Office © Crown copyright. Unauthorised reproduction infringes Crown copyright and may lead to prosecution or civil proceedings. 100008655X 2015





MAP 42

Sutton Cemetery  
Metropolitan Open Land

Metropolitan Open Land Boundary

January 2015

Not to Scale



This map is based on Ordnance Survey material with the permission of Ordnance Survey on behalf of the Controller of Her Majesty's Stationery Office © Crown copyright. Unauthorised reproduction infringes Crown copyright and may lead to prosecution or civil proceedings. 100008655X 2015





MAP 43

Sutton Common Recreation Ground  
Designations, Land Use & Boundaries

Whole area covered by:

- Metropolitan Green Chain
- Wandle Valley Regional Park
- Public Open Space

-  Real Public Open Space
-  Tennis Courts
-  Hardcourt Play Area
-  Bowls Club and Pavilion
-  Childrens Play Area
-  Trees (Indicative)

January 2015

Not to Scale



This map is based on Ordnance Survey material with the permission of Ordnance Survey on behalf of the Controller of Her Majesty's Stationery Office © Crown copyright. Unauthorised reproduction infringes Crown copyright and may lead to prosecution or civil proceedings. 100008655X 2015





MAP 44

Sutton Common Recreation Ground  
Metropolitan Open Land

Metropolitan Open Land Boundary

January 2015

Not to Scale



This map is based on Ordnance Survey material with the permission of Ordnance Survey on behalf of the Controller of Her Majesty's Stationery Office © Crown copyright. Unauthorised reproduction infringes Crown copyright and may lead to prosecution or civil proceedings. 100008655X 2015









MAP 45

Thomas Wall Park  
Designations, Land Use & Boundaries

Whole area covered by:

- Public Open Space
- Wandley Valley Regional Park

-  Open Space
-  Nursery/Youth Club
-  Car Park
-  Isolated Trees (indicative)

January 2015

Not to Scale



This map is based on Ordnance Survey material with the permission of Ordnance Survey on behalf of the Controller of Her Majesty's Stationery Office © Crown copyright. Unauthorised reproduction infringes Crown copyright and may lead to prosecution or civil proceedings. 100008655X 2015





MAP 46

Thomas Wall Park  
Metropolitan Open Land

Metropolitan Open Land Boundary

Borough Boundary

January 2015

Not to Scale



This map is based on Ordnance Survey material with the permission of Ordnance Survey on behalf of the Controller of Her Majesty's Stationery Office © Crown copyright. Unauthorised reproduction infringes Crown copyright and may lead to prosecution or civil proceedings. 100008655X 2015





MAP 47

Wilson's School  
Designations, Land Use & Boundaries

Whole area covered by:  
● Metropolitan Green Chain

- School Playing Fields
- School Buildings
- Building Curtilage
- Multi Utility Games Areas (MUGAs), Parking and Clubhouse for Powerleague Croydon
- School Car Park
- Isolated Trees (indicative)

January 2015

Not to Scale



This map is based on Ordnance Survey material with the permission of Ordnance Survey on behalf of the Controller of Her Majesty's Stationery Office © Crown copyright. Unauthorised reproduction infringes Crown copyright and may lead to prosecution or civil proceedings. 100008655X 2015





MAP 48

## Wilson's School Metropolitan Open Land

Metropolitan Open Land Boundary

Borough Boundary

January 2015

Not to Scale



This map is based on Ordnance Survey material with the permission of Ordnance Survey on behalf of the Controller of Her Majesty's Stationery Office © Crown copyright. Unauthorised reproduction infringes Crown copyright and may lead to prosecution or civil proceedings. 100008655X 2015





MAP 49

Mayflower Park and Buckland Way  
Recreation Ground and Allotments  
Designations, Land Use & Boundaries

- Metropolitan Open Land
- Site of Importance for Nature Conservation and Metropolitan Green Chain
- Public Open Space
- Formal Parkland
- Informal Parkland
- Woodland
- Isolated Trees (indicative)
- Allotments
- Childrens Play Area
- Tennis Courts
- Lakes
- Built Development
- Pylon and Line
- Borough Boundary

January 2015

Not to Scale



This map is based on Ordnance Survey material with the permission of Ordnance Survey on behalf of the Controller of Her Majesty's Stationery Office © Crown copyright. Unauthorised reproduction infringes Crown copyright and may lead to prosecution or civil proceedings. 100008655X 2015





MAP 50

Mayflower Park & Buckland Way  
Recreation Ground & Allotments  
Metropolitan Open Land

Metropolitan Open Land Boundary

Borough Boundary

January 2015

Not to Scale



This map is based on Ordnance Survey material with the permission of Ordnance Survey on behalf of the Controller of Her Majesty's Stationery Office © Crown copyright. Unauthorised reproduction infringes Crown copyright and may lead to prosecution or civil proceedings. 100008655X 2015





London Borough of Sutton  
Environment, Housing and Regeneration  
24 Denmark Road  
Carshalton  
SM5 2JG

June 2015

Printed on recycled paper - this paper can be recycled.

