



London Borough of Sutton **Local Plan**

Green Belt and Metropolitan Open Land Review **Appendix 2**

June 2015



THIS PAGE HAS BEEN LEFT BLANK FOR PRINTING PURPOSES

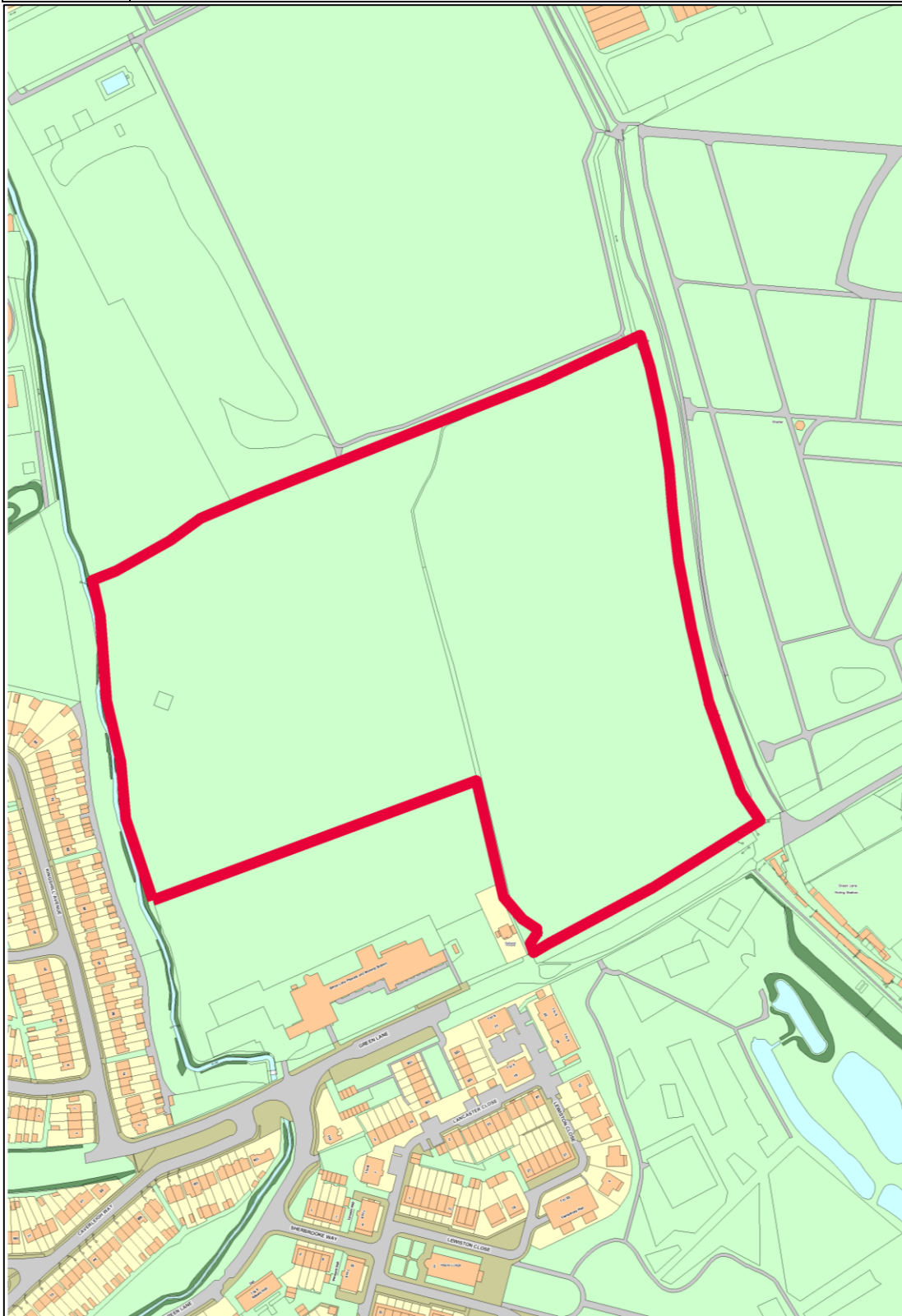
INDEX TO APPENDIX 2

Areas for Potential Release

AREA 1	Land adjoining Green Lane School Map	4
AREA 1	Land adjoining Green Lane School Photograph	5
AREA 2	Part of Reigate Avenue Recreation Ground Map	6
AREA 2	Part of Reigate Avenue Recreation Ground Photograph	7
AREA 3	Western Part of the Woodcote Green Belt Map	8
AREA 3	Western Part of the Woodcote Green Belt Photograph	9
AREA 4	Part of Roundshaw Park Map	10
AREA 4	Part of Roundshaw Park Photograph	11
AREA 5	Land West of Beddington Lane Map	12
AREA 5	Land West of Beddington Lane Photograph	13
AREA 6	Surrey Tennis and Country Club Map	14
AREA 6	Surrey Tennis and Country Club Photograph	15
AREA 7	Land North of Kimpton Park Way Map	16
AREA 7	Land North of Kimpton Park Way Photograph	17
AREA 8	Part of Rosehill Recreation Ground Map	18
AREA 8	Part of Rosehill Recreation Ground Photograph	19

Boundary Amendments

AMENDMENT 1	North Western Woodcote Green Belt Map	20
AMENDMENT 1	North Western Woodcote Green Belt Photograph	21
AMENDMENT 2	Mayflower Park Map	22
AMENDMENT 2	Mayflower Park Photograph	23
AMENDMENT 3	Grove Park Map	24
AMENDMENT 3	Grove Park Photograph	25

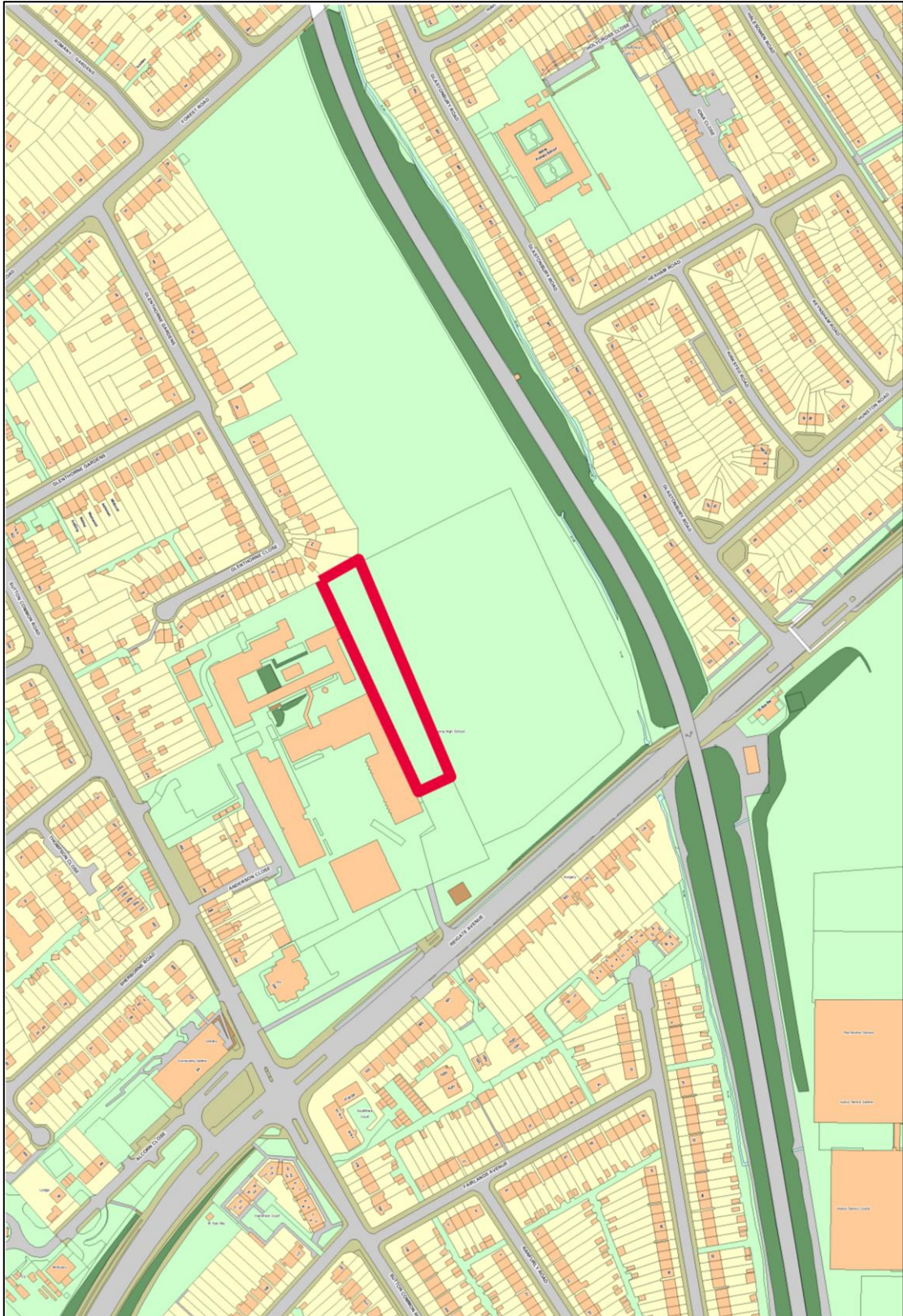
Map 51**AREA 1: Land adjoining Green Lane School****— Land proposed for Safeguarded Burial Space**

This map is reproduced from Ordnance Survey material with permission of Ordnance Survey on behalf of the controller of Her Majesty's Stationery Office. © Crown Copyright. Unauthorised reproduction infringes Crown Copyright and may lead to prosecution or civil proceedings. London Borough of Sutton 100008655X 2015



— Land proposed for Safeguarded Burial Space

This map is reproduced from Ordnance Survey material with permission of Ordnance Survey on behalf of the controller of Her Majesty's Stationery Office. © Crown Copyright. Unauthorised reproduction infringes Crown Copyright and may lead to prosecution or civil proceedings. London Borough of Sutton 100008655X 2015

Map 53**AREA 2: Part of Reigate Avenue Recreation Ground****— Potential Area for Release**

This map is reproduced from Ordnance Survey material with permission of Ordnance Survey on behalf of the controller of Her Majesty's Stationery Office. © Crown Copyright. Unauthorised reproduction infringes Crown Copyright and may lead to prosecution or civil proceedings. London Borough of Sutton 100008655X 2015

Map 54

AREA 2: Part of Reigate Avenue Recreation Ground

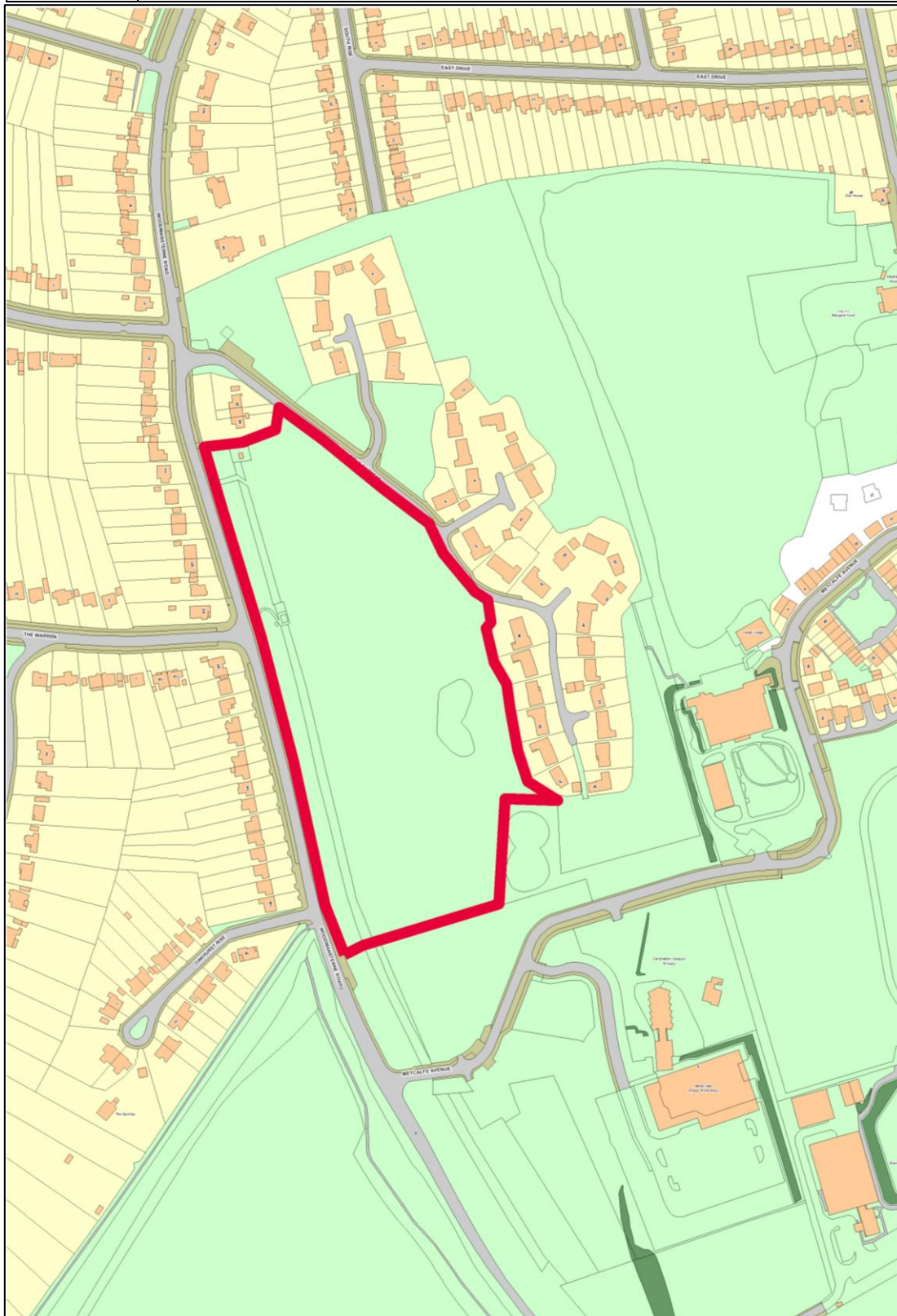


— Potential Area for Release

This map is reproduced from Ordnance Survey material with permission of Ordnance Survey on behalf of the controller of Her Majesty's Stationery Office. © Crown Copyright. Unauthorised reproduction infringes Crown Copyright and may lead to prosecution or civil proceedings. London Borough of Sutton 100008655X 2015

Map 55

AREA 3: Western Part of the Woodcote Green Belt



— Potential Area for Release

This map is reproduced from Ordnance Survey material with permission of Ordnance Survey on behalf of the controller of Her Majesty's Stationery Office. © Crown Copyright. Unauthorised reproduction infringes Crown Copyright and may lead to prosecution or civil proceedings. London Borough of Sutton 100008655X 2015

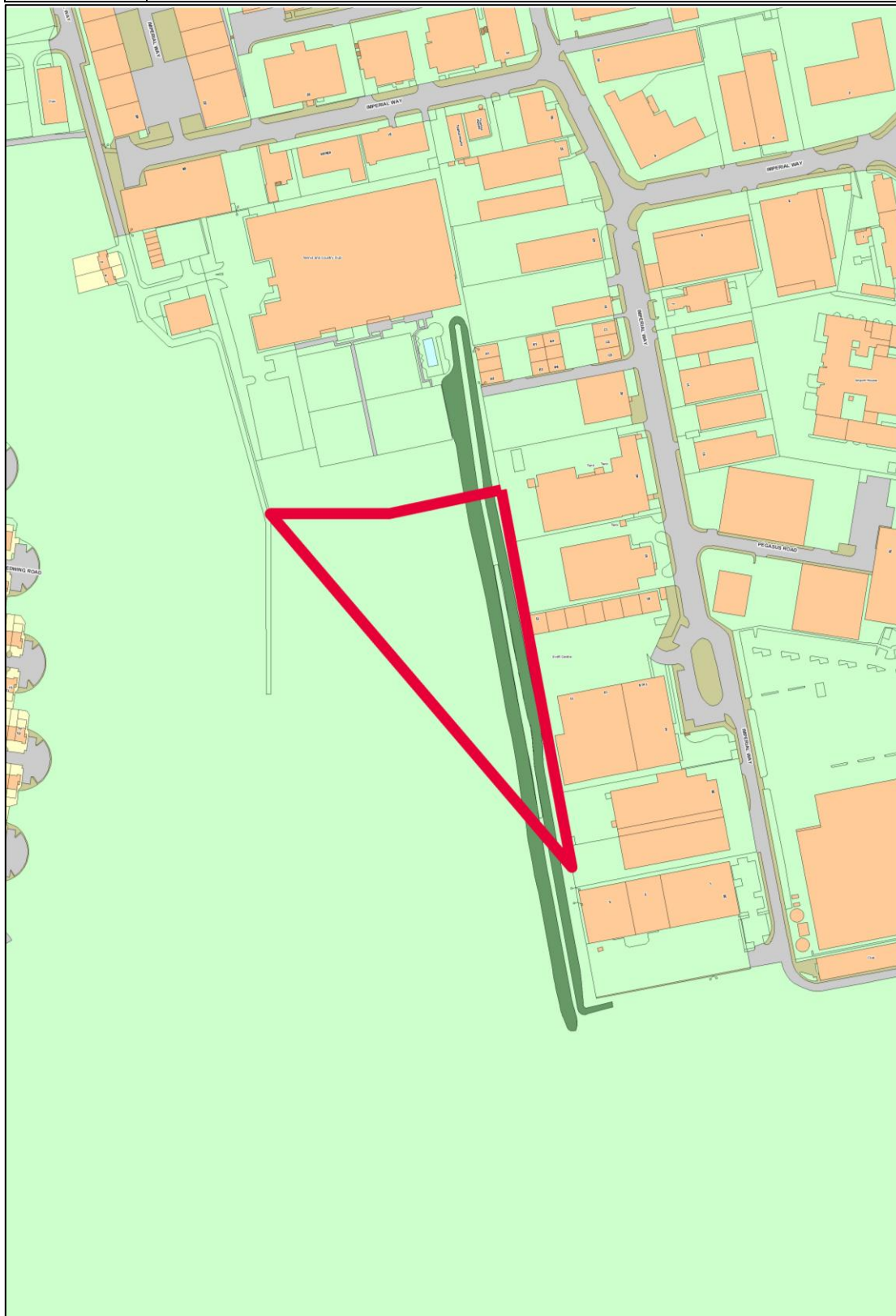


— Potential Area for Release

This map is reproduced from Ordnance Survey material with permission of Ordnance Survey on behalf of the controller of Her Majesty's Stationery Office. © Crown Copyright. Unauthorised reproduction infringes Crown Copyright and may lead to prosecution or civil proceedings. London Borough of Sutton 100008655X 2015

Map 57

AREA 4: Part of Roundshaw Park



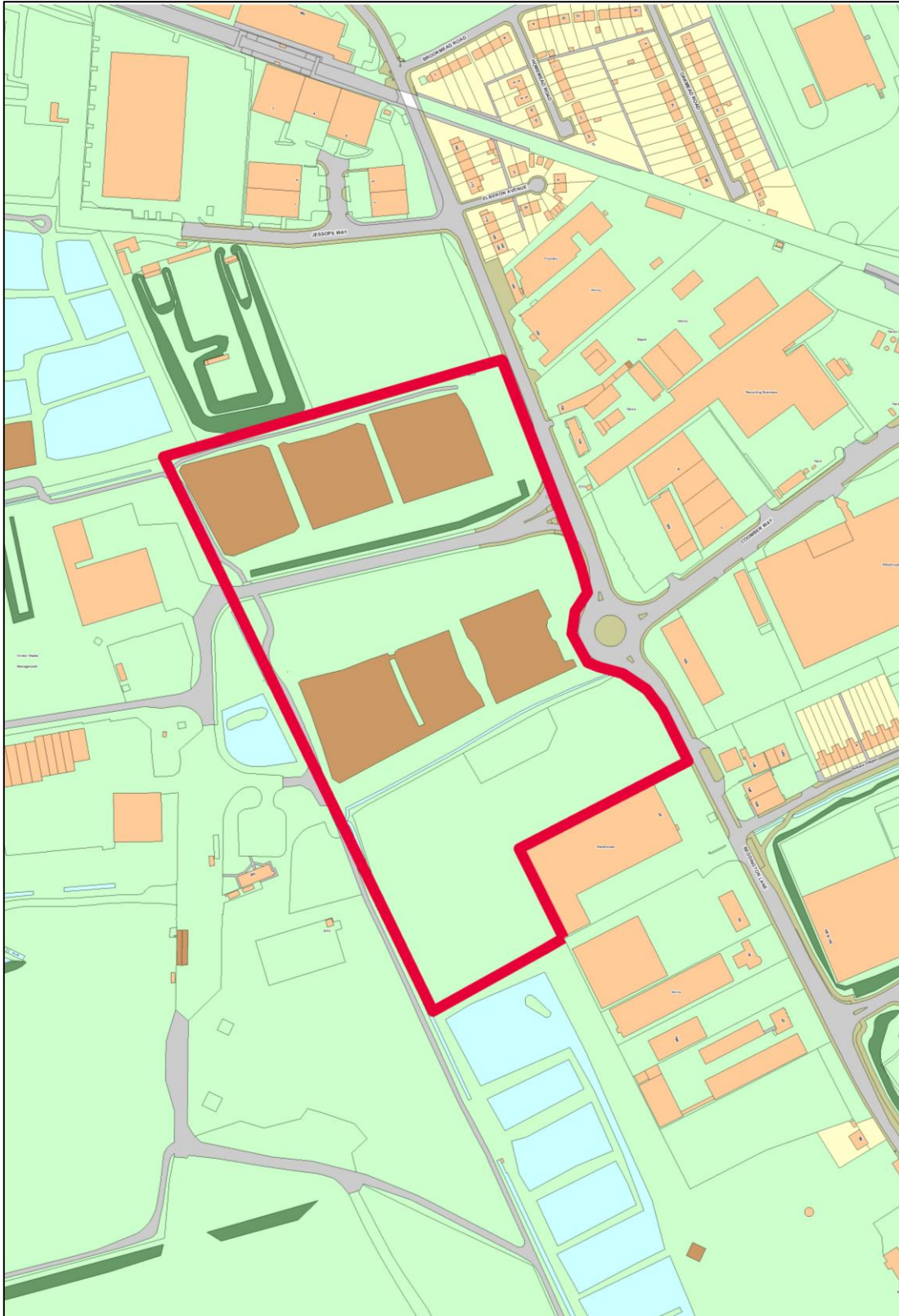
— Potential Area for Release

This map is reproduced from Ordnance Survey material with permission of Ordnance Survey on behalf of the controller of Her Majesty's Stationery Office. © Crown Copyright. Unauthorised reproduction infringes Crown Copyright and may lead to prosecution or civil proceedings. London Borough of Sutton 100008655X 2015



— Potential Area for Release

This map is reproduced from Ordnance Survey material with permission of Ordnance Survey on behalf of the controller of Her Majesty's Stationery Office. © Crown Copyright. Unauthorised reproduction infringes Crown Copyright and may lead to prosecution or civil proceedings. London Borough of Sutton 100008655X 2015

Map 59**AREA 5: Land West of Beddington Lane****— Potential Area for Release**

This map is reproduced from Ordnance Survey material with permission of Ordnance Survey on behalf of the controller of Her Majesty's Stationery Office. © Crown Copyright. Unauthorised reproduction infringes Crown Copyright and may lead to prosecution or civil proceedings. London Borough of Sutton 100008655X 2015

Map 60

AREA 5: Land West of Beddington Lane



— Potential Area for Release

This map is reproduced from Ordnance Survey material with permission of Ordnance Survey on behalf of the controller of Her Majesty's Stationery Office. © Crown Copyright. Unauthorised reproduction infringes Crown Copyright and may lead to prosecution or civil proceedings. London Borough of Sutton 100008655X 2015

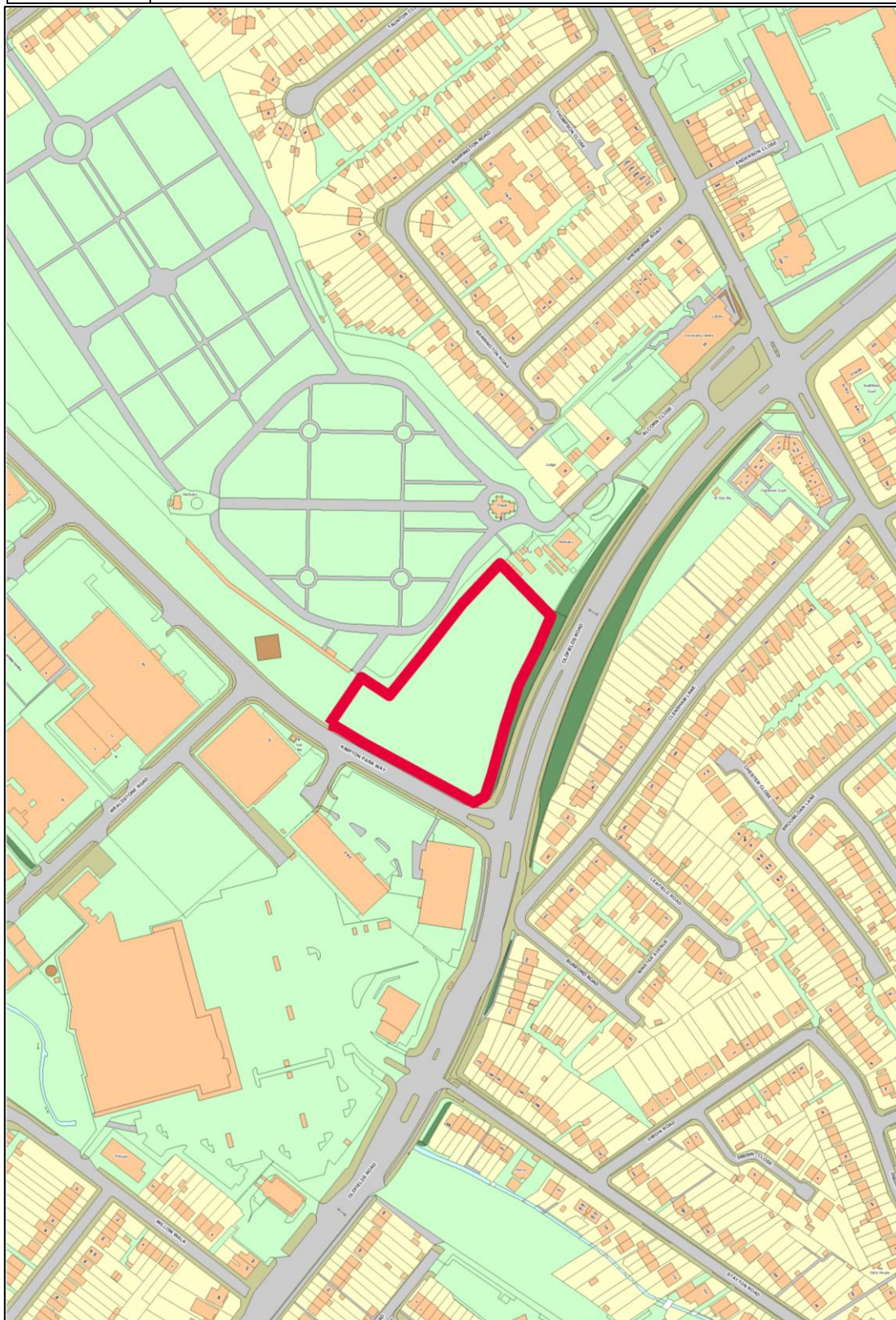
Map 61**AREA 6: Surrey Tennis and Country Club****— Potential Area for Release**

This map is reproduced from Ordnance Survey material with permission of Ordnance Survey on behalf of the controller of Her Majesty's Stationery Office. © Crown Copyright. Unauthorised reproduction infringes Crown Copyright and may lead to prosecution or civil proceedings. London Borough of Sutton 100008655X 2015



— Potential Area for Release

This map is reproduced from Ordnance Survey material with permission of Ordnance Survey on behalf of the controller of Her Majesty's Stationery Office. © Crown Copyright. Unauthorised reproduction infringes Crown Copyright and may lead to prosecution or civil proceedings. London Borough of Sutton 100008655X 2015

Map 63**AREA 7: Land North of Kimpton Park Way****— Potential Area for Release**

This map is reproduced from Ordnance Survey material with permission of Ordnance Survey on behalf of the controller of Her Majesty's Stationery Office. © Crown Copyright. Unauthorised reproduction infringes Crown Copyright and may lead to prosecution or civil proceedings. London Borough of Sutton 100008655X 2015

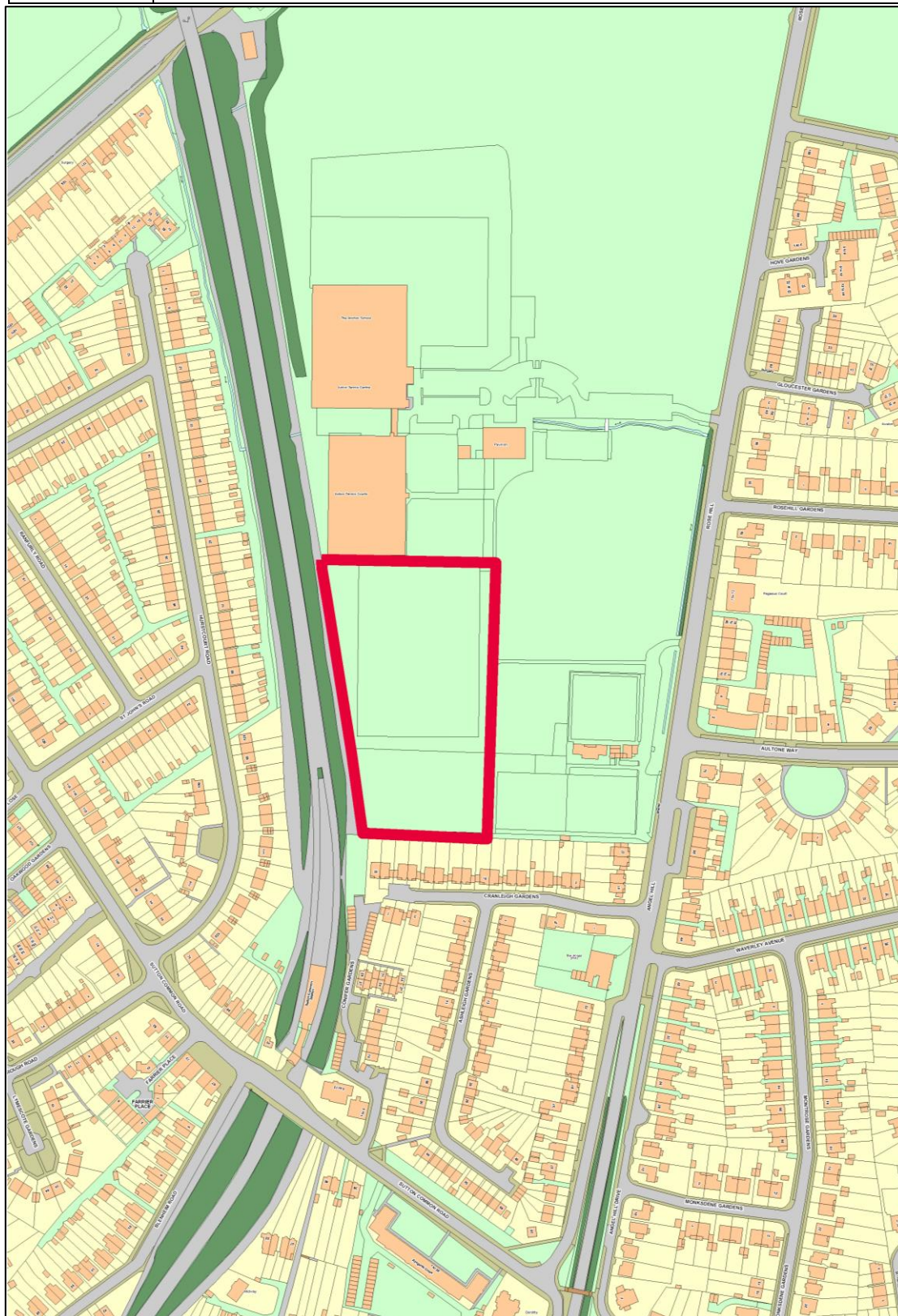
Map 64

AREA 7: Land North of Kimpton Park Way



— Potential Area for Release

This map is reproduced from Ordnance Survey material with permission of Ordnance Survey on behalf of the controller of Her Majesty's Stationery Office. © Crown Copyright. Unauthorised reproduction infringes Crown Copyright and may lead to prosecution or civil proceedings. London Borough of Sutton 100008655X 2015



— Potential Area for Release

This map is reproduced from Ordnance Survey material with permission of Ordnance Survey on behalf of the controller of Her Majesty's Stationery Office. © Crown Copyright. Unauthorised reproduction infringes Crown Copyright and may lead to prosecution or civil proceedings. London Borough of Sutton 100008655X 2015

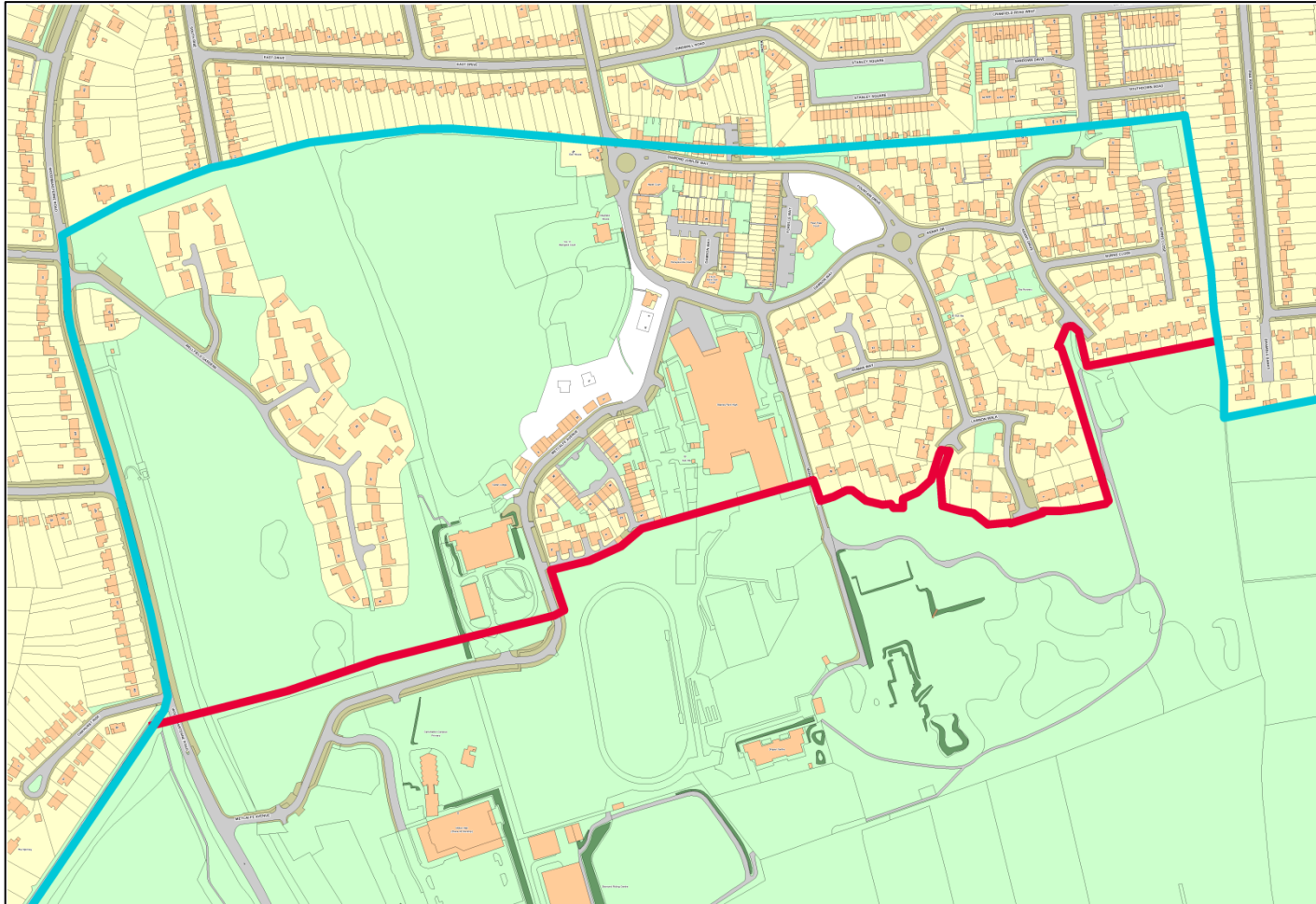


— Potential Area for Release

This map is reproduced from Ordnance Survey material with permission of Ordnance Survey on behalf of the controller of Her Majesty's Stationery Office. © Crown Copyright. Unauthorised reproduction infringes Crown Copyright and may lead to prosecution or civil proceedings. London Borough of Sutton 100008655X 2015

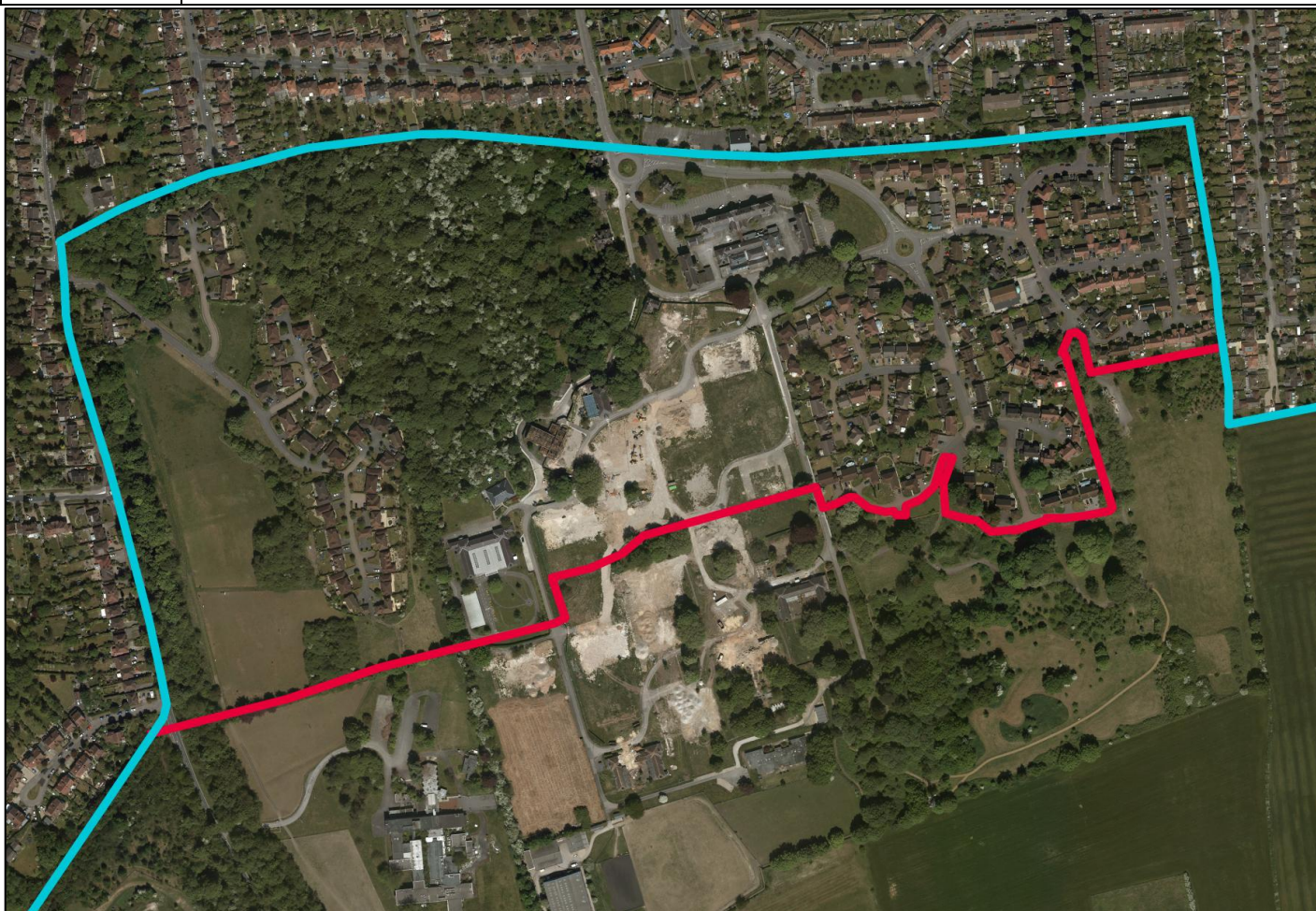
Map 67

AMENDMENT 1: Boundary of the Woodcote Green Belt



— Current Green Belt Boundary — Proposed New Green Belt Boundary

This map is reproduced from Ordnance Survey material with permission of Ordnance Survey on behalf of the controller of Her Majesty's Stationery Office. © Crown Copyright. Unauthorised reproduction infringes Crown Copyright and may lead to prosecution or civil proceedings. London Borough of Sutton 100008655X 2015



— Current Green Belt Boundary

— Proposed New Green Belt Boundary

This map is reproduced from Ordnance Survey material with permission of Ordnance Survey on behalf of the controller of Her Majesty's Stationery Office. © Crown Copyright. Unauthorised reproduction infringes Crown Copyright and may lead to prosecution or civil proceedings. London Borough of Sutton 100008655X 2015



— Current MOL Boundary

— Proposed New MOL Boundary

This map is reproduced from Ordnance Survey material with permission of Ordnance Survey on behalf of the controller of Her Majesty's Stationery Office. © Crown Copyright. Unauthorised reproduction infringes Crown Copyright and may lead to prosecution or civil proceedings. London Borough of Sutton 100008655X 2015



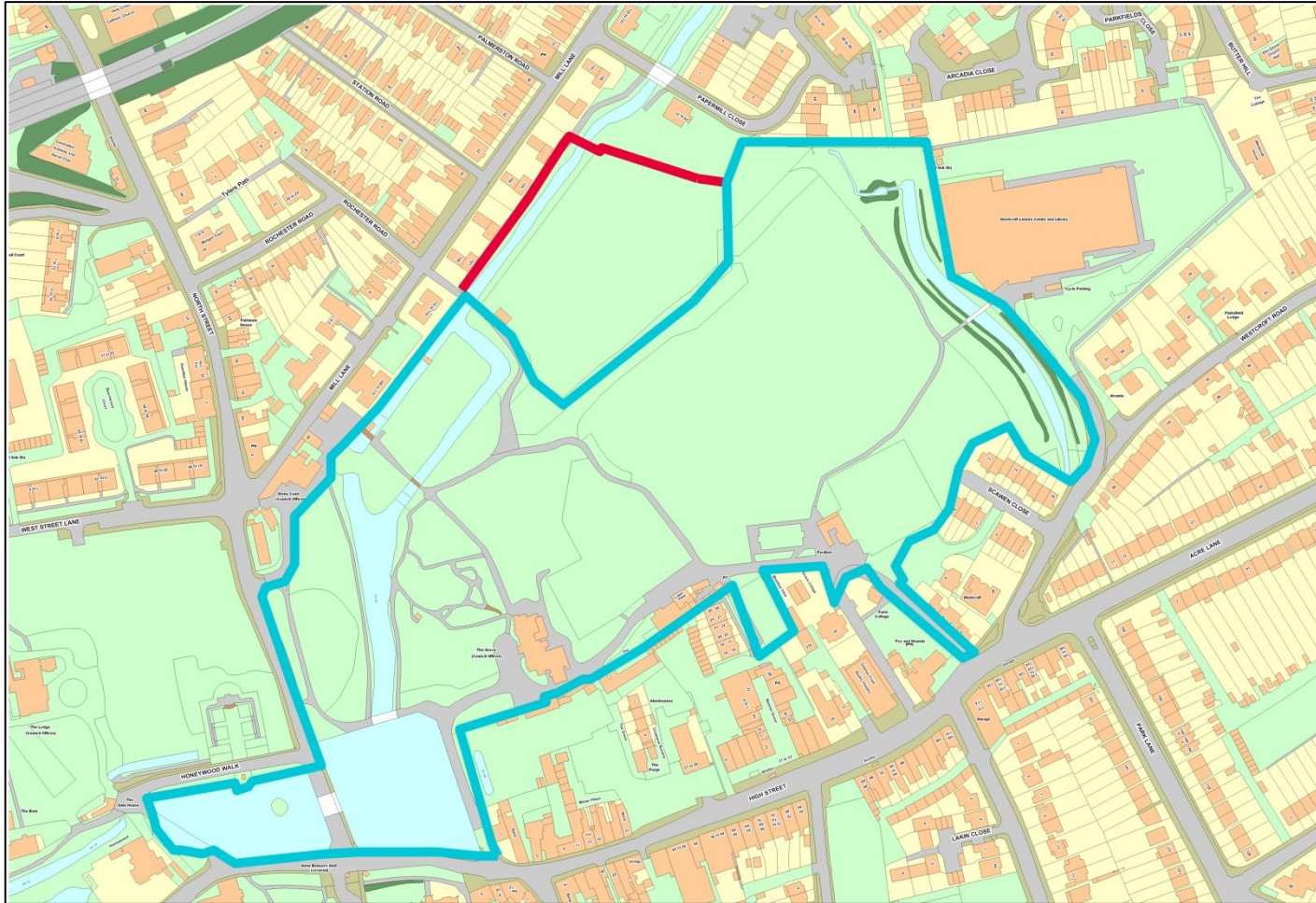
— Current MOL Boundary

— Proposed New MOL Boundary

This map is reproduced from Ordnance Survey material with permission of Ordnance Survey on behalf of the controller of Her Majesty's Stationery Office. © Crown Copyright. Unauthorised reproduction infringes Crown Copyright and may lead to prosecution or civil proceedings. London Borough of Sutton 100008655X 2015

Map 71

AMENDMENT 3: Boundary of the Grove Park MOL



— Current Green Belt Boundary — Proposed New Green Belt Boundary

This map is reproduced from Ordnance Survey material with permission of Ordnance Survey on behalf of the controller of Her Majesty's Stationery Office. © Crown Copyright. Unauthorised reproduction infringes Crown Copyright and may lead to prosecution or civil proceedings. London Borough of Sutton 100008655X 2015



— Current Green Belt Boundary — Proposed New Green Belt Boundary

This map is reproduced from Ordnance Survey material with permission of Ordnance Survey on behalf of the controller of Her Majesty's Stationery Office. © Crown Copyright. Unauthorised reproduction infringes Crown Copyright and may lead to prosecution or civil proceedings. London Borough of Sutton 100008655X 2015



London Borough of Sutton
Environment, Housing and Regeneration
24 Denmark Road
Carshalton
SM5 2JG

June 2015

Printed on recycled paper - this paper can be recycled.

