

Kevin Williams
Principal Engineer
Kingston & Sutton Shared Environment
Service
Tel: 020 8770 5000
Date: 1 June 2023

Dear Resident,

Proposed parking changes for Mickleham Gardens/Pond Hill Gardens

Following our informal consultation in October 2022 we are now moving to a final consultation about proposed parking changes to your street.

Proposals for Mickleham Gardens/Pond Hill Gardens

We are proposing to proceed with implementing a two-hour limited stay parking bay operating Monday-Saturday 8am-6.30pm (no return within 2 hours) between Bethell Court and Fitznell Court **(see Map on the back of this letter)**.

Have your say

This is your final chance to let us know if you agree or disagree with the proposals, or indeed have another view. You can see the proposed changes and provide feedback online: www.sutton.gov.uk/-/parking-review.

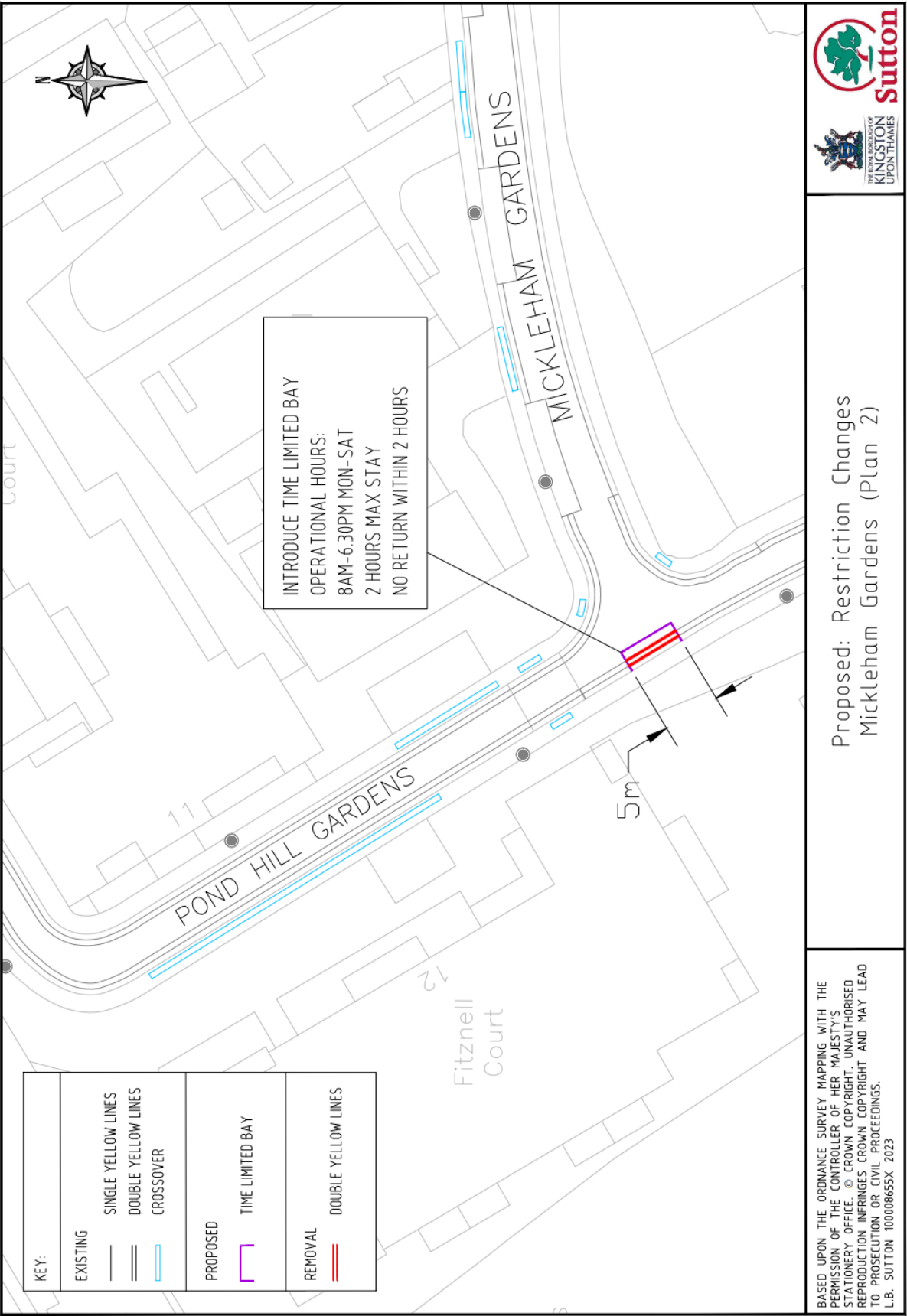
This final stage of consultation will end on **June 22, 2023**.

If you do not have access to the internet, you can provide your feedback in writing to Parking Strategy Review, Highways & Transport, Civic Office, St Nicholas Way, Sutton, SM1 1EA (quoting MapSutt 1136).

Yours faithfully,

Kevin Williams
Principal Engineer, Kingston & Sutton Shared Environment Services

Map: Mickleham Gardens parking proposals



PS-1000-13-02-12