

Your Council Tax



Dear resident

We are ambitious for Sutton. Improving Sutton High Street and our district centres, local neighbourhoods and open spaces, building new energy-efficient council homes and creating the London Cancer Hub: these are just a few of the pioneering projects we're delivering while continuing to do everything else you expect of your local council.

Our ambition is not being diminished by 10 years of Government austerity. But it does mean we need to do more with less. Since 2010 our core central Government funding has been reduced by more than 60% in real terms. For every £1 we got in 2010 we now get just 40p.

While we're managing with less, more people than ever need our help. Almost two-thirds of our budget cares for older people, looks after vulnerable children, supports people with learning difficulties and helps those with physical disabilities live independently. Ten years of Government-imposed austerity means we're often the final safety net for those most in need.

We are determined these challenges will not stop us achieving our ambitions. We're proud that the majority of residents think we spend your council tax responsibly. We have already made savings of £96.4million since 2010 and the changes we've made will continue to save us money every year.

To help us deliver our shared ambitions, while delivering services for adults and children, we have taken the difficult decision to increase council tax this year. Council tax is increasing by 1.99%. This will help us cover our costs (due to rising prices) and contribute towards the increasing costs of caring for those who need us.

The Government has decided that, in order to manage the increasing costs and demands on adult social care, local authorities have to cover the funding gap themselves by taxing residents. We therefore have little choice but to also apply the Government's 2% adult social care tax. This can only be used to support the most vulnerable older people in Sutton. This would not be necessary if the Government solved the national adult social care crisis. These two increases will mean Band D households will pay an extra 52p a week in council tax and 53p a week in adult social care tax.

This is not a decision we took lightly. Increasing council tax and using the adult social care tax is the only way we can raise the money we need to look after people in Sutton when they need us.

Your council tax protects those needing our care, while helping us deliver our ambitious projects to bring new jobs, homes and improvements to Sutton. I want to say a huge thank you for helping us ensure Sutton remains a great place to live, work and raise a family.

Yours faithfully,

Councillor Ruth Dombey
Leader of Sutton Council

For a full breakdown of how council tax is spent in Sutton, please visit sutton.gov.uk/counciltax or visit your local library to collect a printed version.

If you need assistance please call 020 8770 5000 and select option 1.



WHAT YOUR COUNCIL TAX DOES FOR SUTTON

To continue meeting Sutton's needs, this year we will invest...

£48m

in social care that protects adults



£6.5m

in waste services and street cleaning



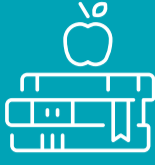
£4.9m

in repaving and maintaining our roads



£40m

supporting children when they need us most including special educational needs and disabilities



£1.2m

in tackling crime and anti-social behaviour through the Safer Sutton Partnership



£5.5m

in cultural services, libraries and leisure centres



Almost two-thirds of our budget is spent caring for older people, looking after children, supporting people with learning difficulties and helping disabled people live independently. These are some of the most important services we provide, but also the most expensive.

On average it costs...

£9.7m

a year for care homes for older residents



£6.9m

a year for foster placements for vulnerable children



£6.5m

a year to empower adults with learning difficulties through supported living



£315k

a year to run a local library

£9k

a year for the grit used to help keep our roads safe

£620k

a year to keep our street lights on

THE CHALLENGE

60% less

Government funding than 2010 in real terms



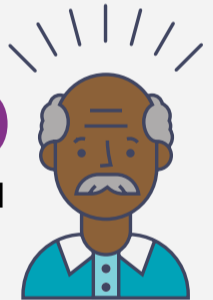
£13m

more savings we need to make by 2022/23



£200

less to spend per person in Sutton since 2010



AT THE SAME TIME, MORE PEOPLE THAN EVER NEED OUR HELP

£1m

more needed this year alone for adult social care

£300k

more needed this year to support children and their families in need

We've declared a **CLIMATE EMERGENCY** which needs urgent action

To protect services, we have already made savings of **£96.4m**

YOUR COUNCIL TAX

Your council tax protects the most vulnerable, while helping us deliver our ambitious projects to bring new jobs, homes and improvements to Sutton.

To help us deliver our shared ambitions, while delivering services for adults and children, we have taken the difficult decision to increase council tax this year.



52p

extra for council tax

+



53p

extra for adult social care

=



£1.05

more a week for a Band D property

=



Raising an extra **£4m**