

3.1 Site Overview

Sutton

The London Borough of Sutton is a London Borough in South London and forms part of Outer London. It covers an area of 17 sq mi and is the 80th largest local authority in England by population. It is South of the London Borough of Merton, West of the London Borough of Croydon and East of the Royal Borough of Kingston Upon Thames.

Sutton has 30 primary and 14 secondary schools.

The Belmont Hospital Site is located to the south east of Belmont town centre within the London Borough of Sutton.

Belmont

Belmont is a village at the southern end of the town of Sutton in the southwest London Borough of Sutton. It is located off the A217 road to Banstead Downs in Surrey. It is a suburban development 10.8 miles south-southwest of Charing Cross.

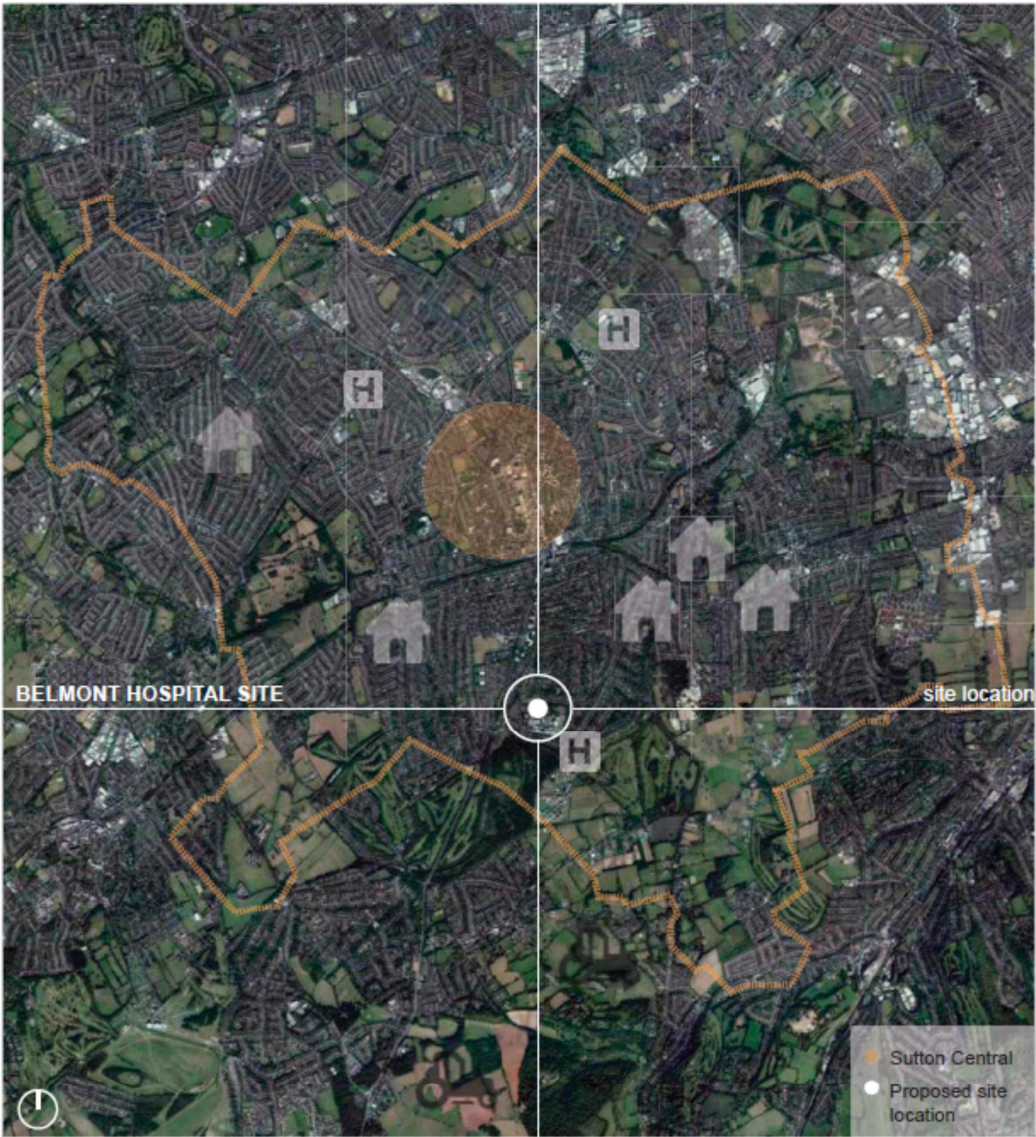
The nearest railway station is Belmont which is on the Sutton to Epsom Downs branchline and the London Victoria to Epsom Downs line.



KEY
London
Borough of Sutton



SUTTON KEY
Belmont District Council
Belmont Hospital Location



Belmont Hospital Site



3.8 Services and facilities

Belmont is reasonably well served in terms of facilities available within the village, however many of the commercial and industrial areas are found towards Sutton centre, which is 15 minutes walk from Belmont. Conversely, the majority of residential areas and green spaces are towards Belmont. In terms of the educational system, there is a secondary school in Belmont, Overton Grange High School, located on the north side of the village. There are two Primary Schools; The Avenue Primary School and Barrow Hedges Primary School. There are also nurseries adjacent to Sutton Hospital site. Many of the cultural and leisure facilities

are located around the town centre of Belmont and Sutton. In addition, there are four main green areas very close to the Belmont Hospital site. These are linked to each other by pedestrian and cycle routes.

3.9 Site Connectivity

Bus Routes

Sutton is well served by public transport, frequent buses connect

the Borough to Kingston, Wimbledon, Morden, Croydon, Caterham, Purley, Tooting, Crystal Palace and Putney. Regular but less frequent services serve Banstead, Reigate/Redhill, Epsom and Heathrow Airport. Bus routes S1, 280, 420, 773 and 820 serve the proposed site. The nearest one is located in Sutton Lane and Brighton Road.

Roads

The Borough's road network includes three strategic 'Red Routes' which link central London to the M25 (A24 and A217) and

provide an east-west route across the Borough (A232). These roads are managed by Transport for London. The remainder of the road network is managed by the Council. The proposed site extends along Chiltern Road which is a small road leading to a residential area. On the west side of the site there are two main roads, Brighton Road and Sutton Lane which link Belmont to Sutton on the north and Banstead to the south. The whole area has a good cycle and pedestrian network which links all the green spaces of the area.