



# **Gambling Act 2005**

## **Local Area Profile**

### **This document accompanies the Statement of Policy and Principles 2022 - 2025**

This document was published on: 10 December 2021

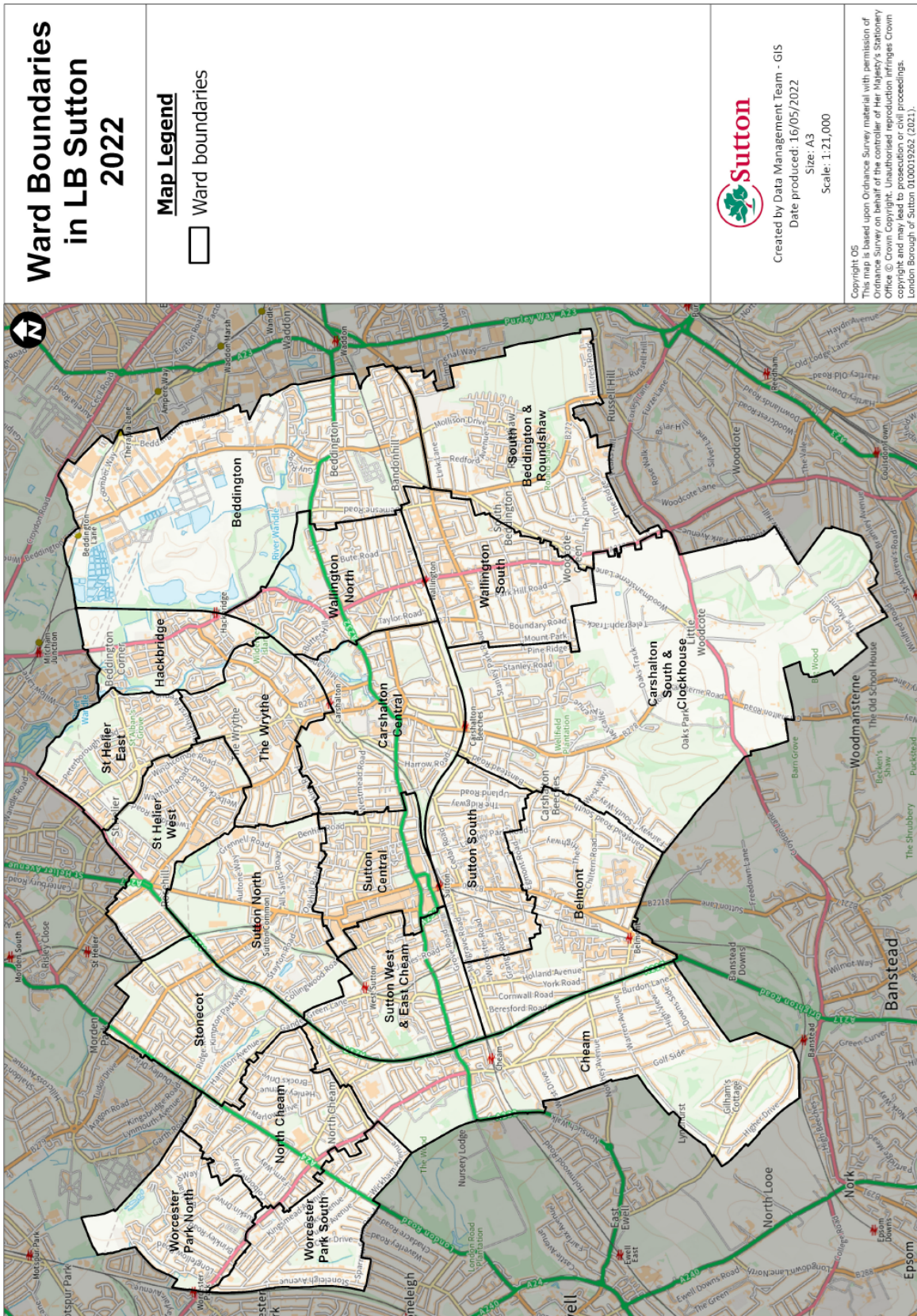
This document was updated on: 27 June 2022 - updated maps following changes to council Ward boundaries

This Page is Intentionally Blank

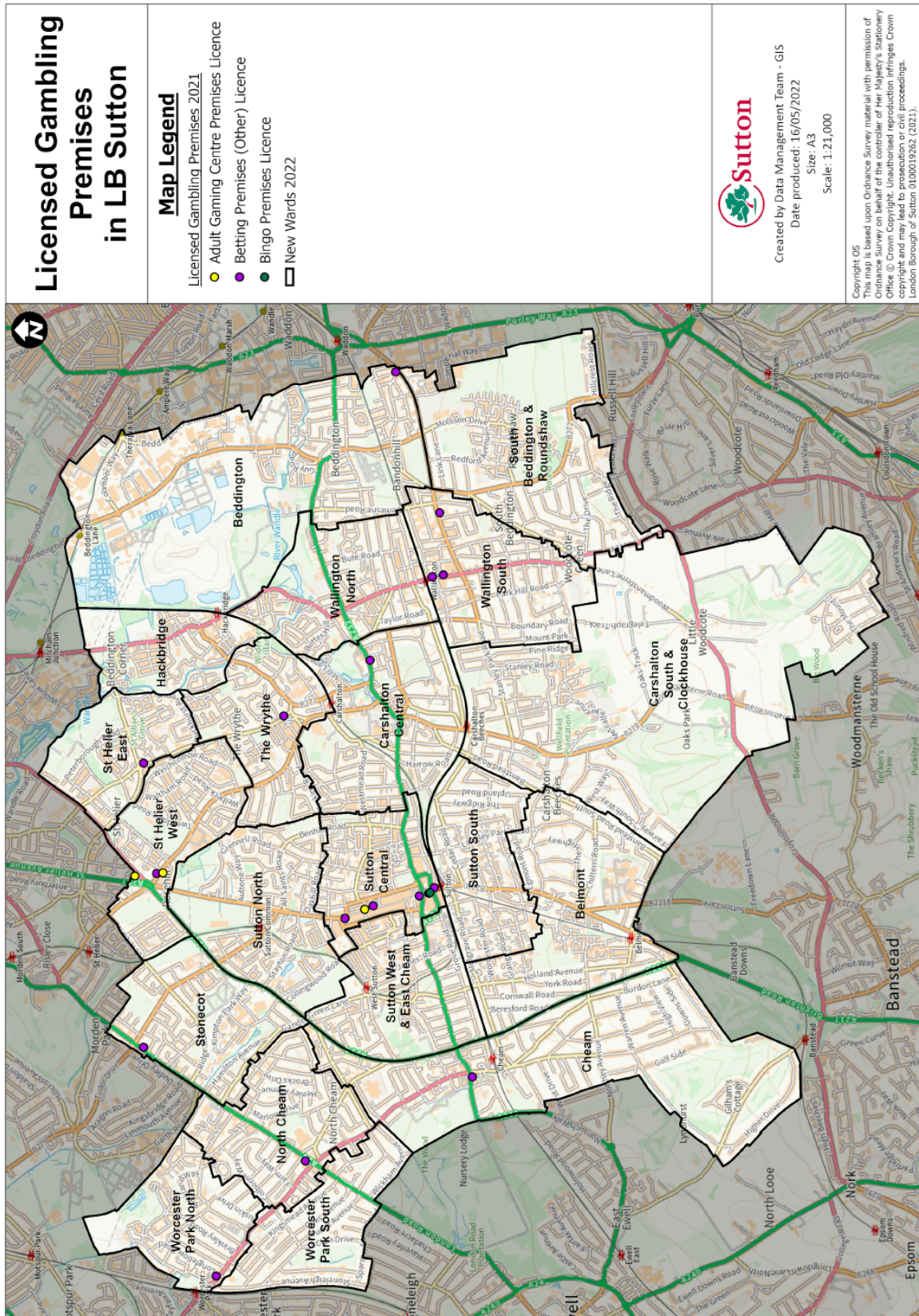
## Contents

	<b>Page</b>
<b>Map 1: Borough map</b>	<b>4</b>
<b>Map 2: Location of licensed venues</b>	<b>5</b>
<b>Map 3: Location of drug and alcohol services</b>	<b>6</b>
<b>Map 4: Education facilities and children's centres</b>	<b>7</b>
<b>Map 5: Income domain with gambling premises</b>	<b>8</b>
<b>Map 6: Employment domain with gambling premises</b>	<b>9</b>

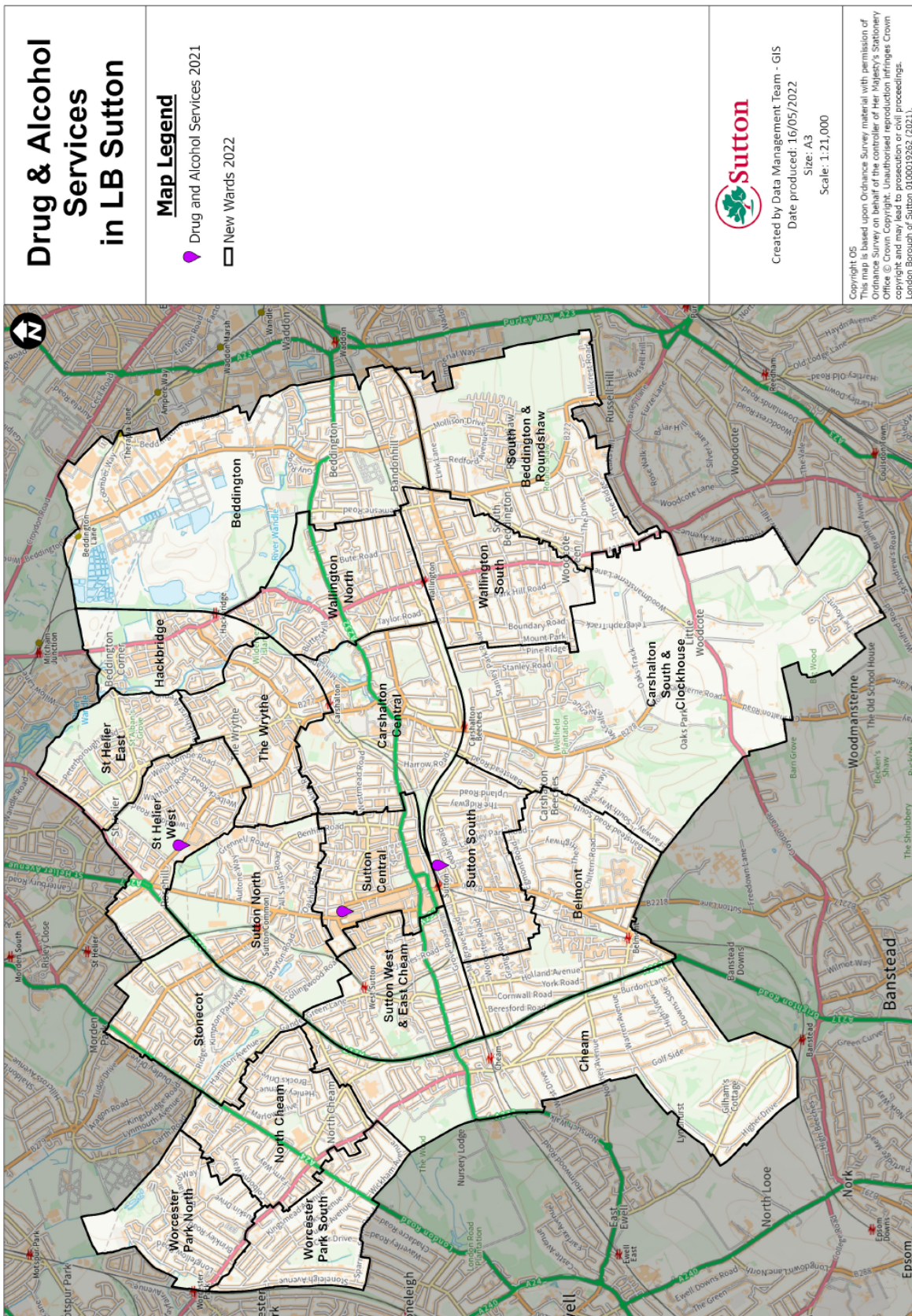
Map 1: Borough map



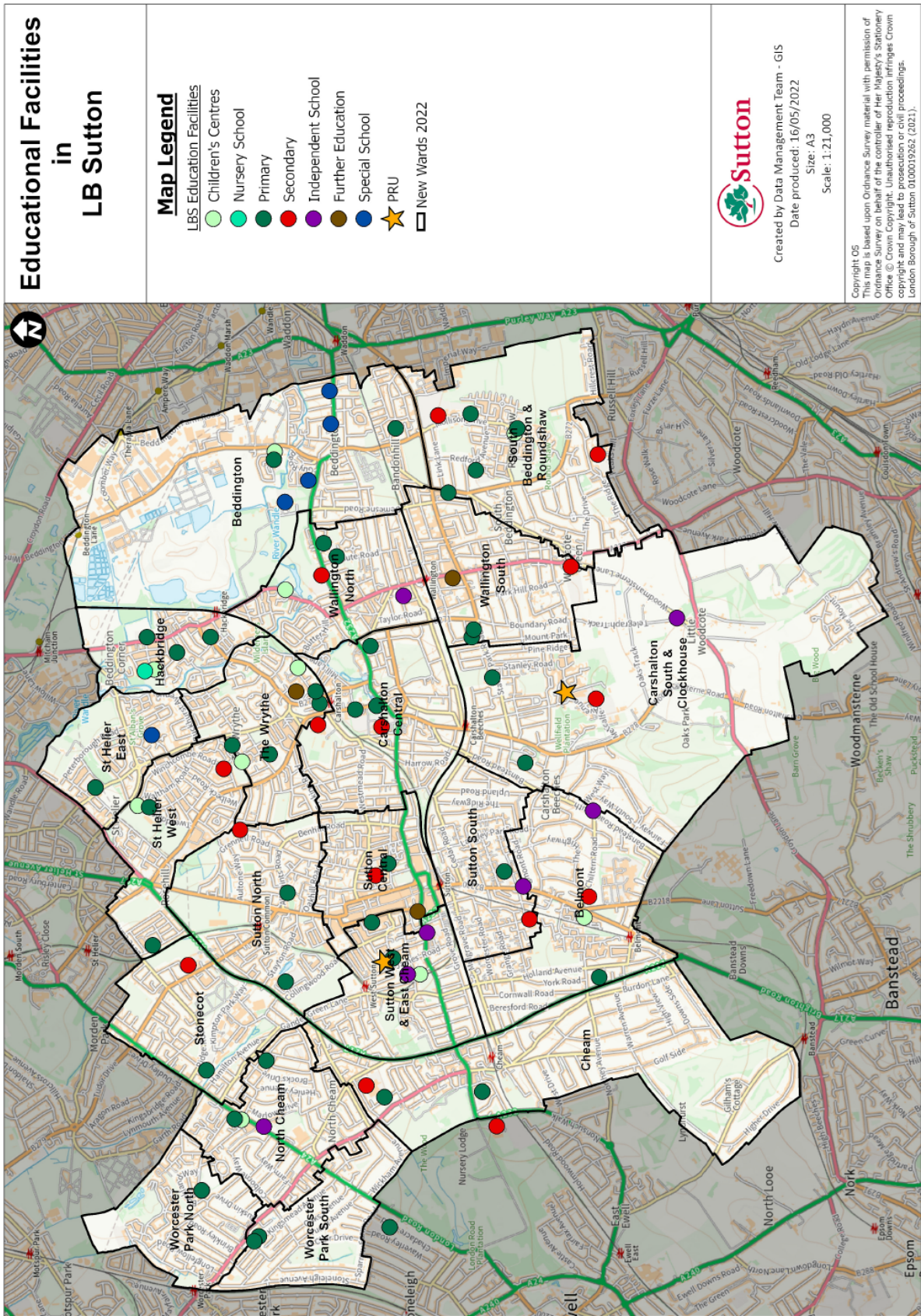
Map 2: Location of licensed venues (Correct on 30 September 2021)



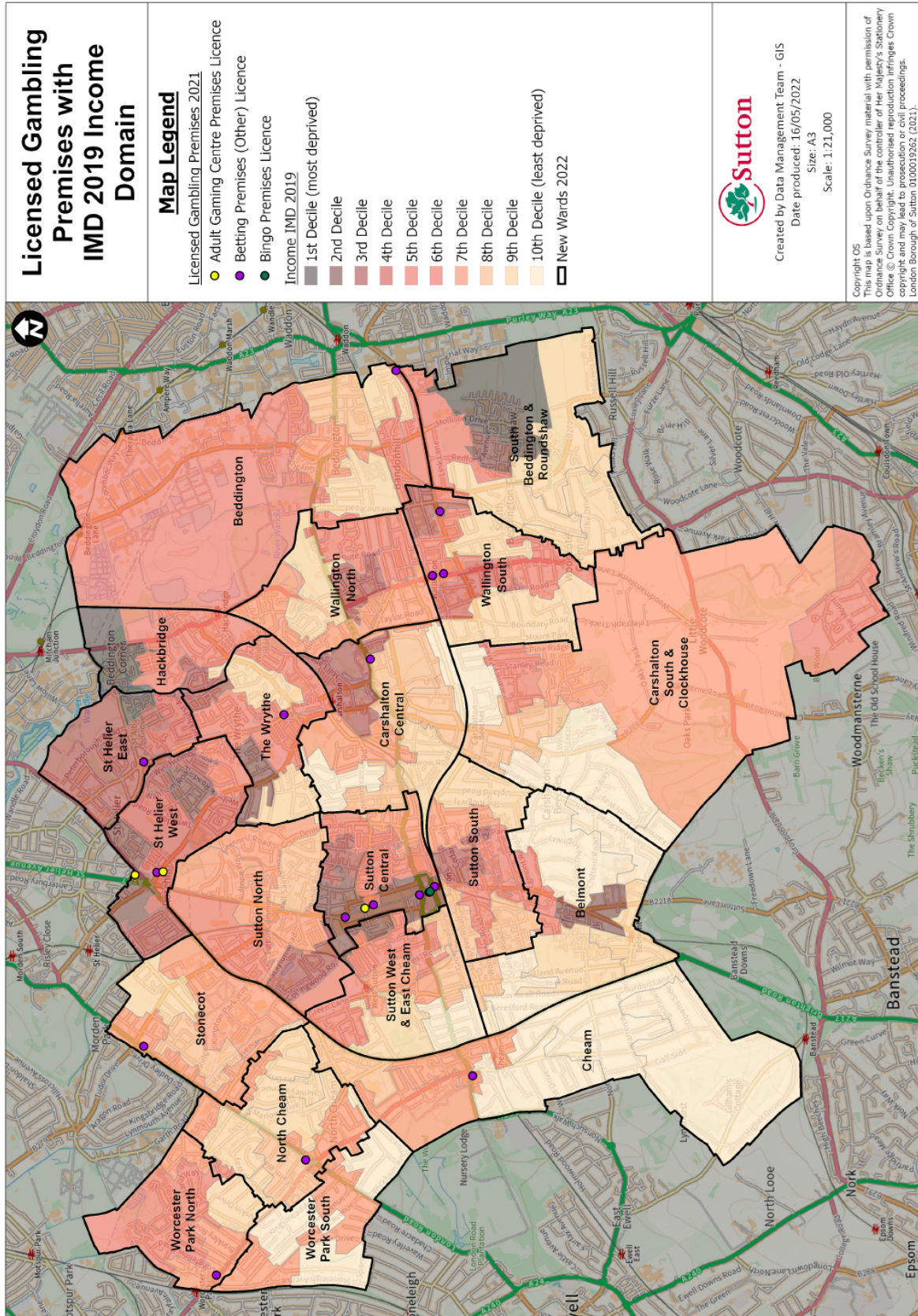
Map 3: Location of drug and alcohol services



Map 4: Education facilities and children's centres



Map 5: Income Domain with Gambling Premises





Map 6: Employment Domain with Gambling Premises

