

**MAYOR OF LONDON
& LONDON ASSEMBLY
ELECTIONS**



**6 MAY
2021**

**Mark it in the diary.
Again.**

London's voting on 6 May 2021. Find out how you can take part at londonelects.org.uk

Have your say.

**LONDON
ELECTS**

On 6 May 2021, people living in London can vote for the Mayor of London and 25 Members of the London Assembly.

The Mayor's job is to make London a better place for everyone who visits, lives or works in the city.

This includes developing policies, setting budgets, overseeing major programmes and championing London around the world – all in line with the Mayor's vision and in the interests of London and Londoners.

The London Assembly is made up of 25 Members – 11 represent the whole capital and 14 are elected by London's constituencies.

The Assembly acts as the eyes and ears of Londoners at City Hall. Members hold the Mayor to account by examining Mayoral strategies, decisions and actions to make sure they are in the public interest.

WHEN TO VOTE

On 6 May 2021, polling stations will be open from 7am – 10pm. You should aim to arrive in plenty of time to cast your vote.

If you are voting by post, you will receive your ballot papers before the election. You must ensure you return them by 10pm on 6 May 2021.

WHO CAN VOTE

You can vote if you are:

- aged 18 or over on 6 May 2021
- a British, EU or qualifying Commonwealth citizen living in London
- registered to vote by 19 April 2021

You can register to vote at www.gov.uk/register-to-vote or contact your local council.

WHERE TO VOTE

There are 3 ways you can vote.



I At your polling station:

- Before 6 May you will be sent a ‘poll card’ with details of your polling station.
- You can only vote at the polling station named on this card.
- Staff at the polling station can help you understand your ballot papers if you need it.
- You do not have to take your poll card with you to the polling station but it will help staff.

What to expect at the polling station:

Polling stations will be safe places to vote on 6 May. Do not vote in person if you feel unwell. Here’s what you can do to help keep yourself and others safe:

- wear a face covering unless you are exempt
- clean your hands – hand sanitiser will be available
- observe social distancing and one-way systems
- bring your own pen or pencil

For the latest information on COVID-19 and the elections, visit the London Elects website at www.londonelects.org.uk/Covid

If you cannot go to the polling station in person, you can apply to vote by post or by proxy.



2 By post:

- Your ballot papers will be sent to you about a week before election day.
- Mark your votes and send them back so they arrive before 10pm on 6 May 2021.
- You must remember to complete the security declaration with your signature and date of birth.
- If you do not get your votes back in time, they will not be counted.
- If you have forgotten to post them, you can take your completed postal vote to your polling station in the envelope provided.

The deadline for new postal vote applications and for changes to existing postal or proxy votes is 5pm on 20 April 2021.



3 Using a proxy:

- If you are not able to get to the polling station you can ask someone you trust to be your proxy.
- This means they can vote on your behalf but you will need to tell them who you want to vote for.

The deadline for receiving new applications to vote by proxy (not postal proxy or emergency proxies) is 5pm on 27 April 2021.

The deadline for receiving emergency proxy applications is 5pm on 6 May 2021.

Find out more at londonelects.org.uk

@LondonElects

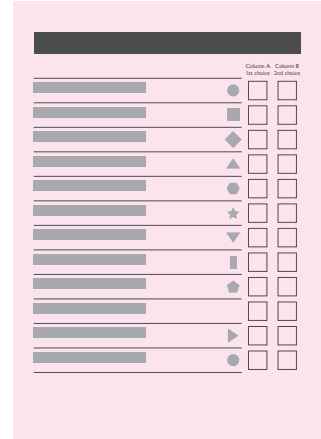
#LondonVotes

HOW TO VOTE

You will be given 3 ballot papers to vote:

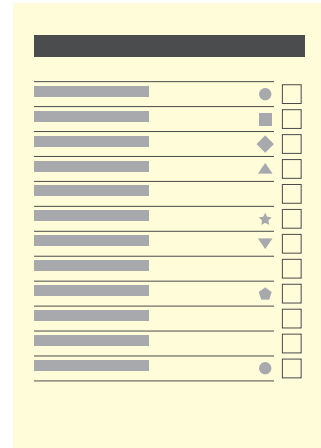
The Mayor of London (pink ballot paper):

- You have 2 choices for the Mayor of London.
- Mark [X] your first choice in Column A.
- Mark [X] a different second choice in Column B.
- You must make a first choice or your vote won't be counted.
- Each vote must be for a different candidate.



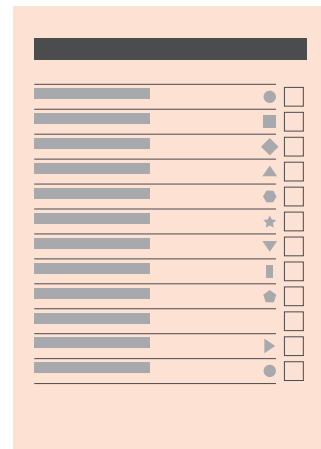
Constituency London Assembly Member (yellow ballot paper):

- Choose who you want to represent your local area on the London Assembly.
- Vote for only one candidate.
- Mark [X] next to your choice.



London-wide Assembly Member (orange ballot paper):

- Choose who you want to represent the whole of London on the London Assembly.
- Vote only once.
- Mark [X] next to your choice.



MORE INFORMATION

In April 2021, everyone who is registered to vote in London will receive an election booklet. This will list all the London Assembly candidates, include mini-manifestos from the Mayoral candidates who choose to have one and give you key information about where and how to vote. Look out for it coming through your door.

If you have any questions please contact:
info@londonelects.org.uk

For the latest information on COVID-19 and the elections, visit the London Elects website at www.londonelects.org.uk/Covid