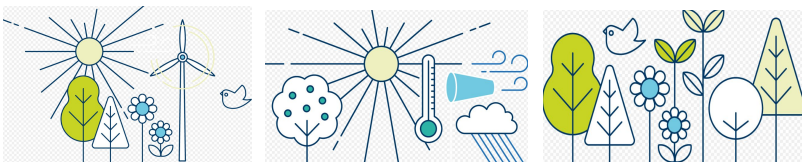


# Sutton's Environment Strategy FAQ

## Topic: Climate Change

The council consulted on its Environment Strategy for eight weeks in August 2018. As well as answering the questions, participants were invited to provide comments. We received nearly 700 comments, all of which were reviewed and influenced the final draft of the strategy. A lot of the comments were very similar, and we have curated these comments into a comprehensive FAQ documents giving the answers for the public to view.



---

### **1. Why are you spending money on climate change?**

As a borough we need to prepare for and minimise the impact of climate change. Evidence from the International Panel on Climate Change indicates that the borough needs to be prepared for heavy rainfall, high temperatures and drought. Our more vulnerable residents are those likely to be affected most. We want to minimise the impact to all our residents and help make the borough a great place to live, work and study.

### **2. Water is a basic necessity, why are you restricting people's access to this?**

Our aim is not to restrict water use, but to support residents to use it in the most sustainable way. We know there is a water scarcity issue in London and the South East of England. Residents can reduce their water consumption by using shower regulators/ timers, using leak detection kits, cistern displacer and installing water butts. More information is available on the SES Water website.

### **3. Why are you trying to tackle climate change? It may not be real and the council should be focusing on fixing potholes and other issues.**

Our aim is to minimise the effects of climate change. Evidence from the International Panel on Climate Change indicates that climate change is happening and we need to take action now to prepare for, and minimise, the effects in our borough.

The new environment strategy won't take resources away from other issues such as fixing potholes.

### **4. How will you reduce water consumption? The focus should be on delivery core services correctly rather than restricting peoples water use.**

The action plan has been created for the whole borough, not just the council. Actions related to helping households use less water will be led by the water supply company (SES Water) and supported by the council. Examples of the actions to be taken include providing homes with water efficiency measures and supporting households to switch to a water meter.

### **5. There should be a free collection of reusable but unwanted items to a recycling centres not everyone has vehicle access. Are there any plans to introduce this?**

Residents without vehicle access can walk items into the recycling centre or reuse shop at Kimpton household reuse and recycling shop as long as they are small and safe to carry.

---

**6. There needs to be more emphasis on food, including growing food locally, reducing food miles and supporting sustainable local farming (e.g. Sutton Community Farm). What plans does the council have?**

When we drafted the strategy we recognised that the Council wasn't best placed to write the actions relating to food. During the consultation (held in summer 2018) we received feedback from local groups about what food actions should be included. These have been added to the 'Tackling Climate Change' chapter.

**7. The price of a recycled or repaired item would need to be significantly less for me to buy it as it won't come with a guarantee?**

We agree that the initial cost of an item is important, however we also need to consider the whole cost of an item. By this we mean the disposal as well as the initial purchase cost. When these costs are added together it can be cheaper to repair an item rather than buying a brand new product. We will be working with residents and local organisations to make buying and using reused or recycled items accessible to all.

**8. What plans do Sutton have to increase upcycling/ reusing?**

Increasing reuse and upcycling is one of the key aims of the circular economy chapter. At the Kimpton household reuse and recycling centre there is a reuse shop. We will work with Veolia and other partners to expand this and other similar projects in the borough, as well as upcycling projects. In 2017/18, we increased the recycling rate to 50% and hope to increase this further.

**9. Encourage upcycling by giving support to those who have or wish to learn skills and provide platforms for the upcycled goods to be purchased.**

We agree that people need to be equipped with the skills and knowledge to deliver these actions. We will look to work with our local colleges and community groups to deliver this.

**10. As we have little or no issue currently with water consumption levels, why does this need to be included in the vision?**

Despite the UK's reputation for rain, on average the south east of England has less water per person than Morocco (Hubbub #Tapchat campaign). This is due to both low rainfall (we receive 50% less rain than the rest of the UK) as well as a highly dense population (lots of people living in a small area). This means we need to use the water we have in the most efficient way possible.