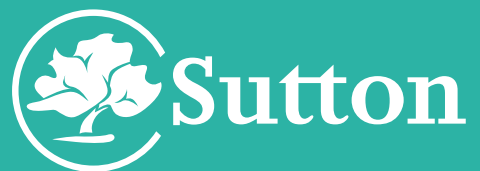


# SUTTON'S ENVIRONMENT STRATEGY

2019–2025

& CLIMATE EMERGENCY  
RESPONSE PLAN



# CONTENTS

|                                |    |
|--------------------------------|----|
| Foreword - Cllr Manuel Abellan | 3  |
| Foreword - Cllr Ben Andrew     | 5  |
| The Vision                     | 6  |
| Be part of this!               | 8  |
| Cleaner air                    | 12 |
| A greener borough              | 16 |
| Achieving net zero carbon      | 20 |
| Creating a circular economy    | 24 |
| Tackling climate change        | 28 |
| Implementation                 | 33 |
| Asks of others                 | 36 |

# FOREWORD 2019



**Councillor Manuel Abellan, Chair of Environment and Neighbourhood Committee**

I am proud to present Sutton's environment strategy that will take us forward for the next five years. Sutton has a well earned reputation for its green credentials but we want to go further by being London's most sustainable borough. Everyone working, living and studying in Sutton has a part to play in protecting the environment in our borough.

We had a fantastic response to the consultation that we held over the summer of 2018, with over 800 people giving their views via our consultation survey or through activities that Community Action Sutton ran. We've made changes based on your comments.

It's heartening to hear the actions many people in Sutton are already taking to make us the most sustainable borough in London. Using the bus and leaving the car at home, taking reusable bags when shopping, growing your own food and saving water - small actions that, if we all do them, make a big difference.

People rightly reminded us in the consultation that Sutton is just one borough and we need to work with our neighbouring boroughs and others to bring changes that extend beyond London. We will continue to push for action from the UK government as well as governments internationally.

Our efforts have already made a great start with unanimous agreement from councillors to remove single use plastics from council operations and contracts. We'll be ambitious, innovative and involve everyone, helping people to live, work and study more sustainably. Each year we will report how the actions in this strategy are progressing.

# FOREWORD 2020



**Councillor Ben Andrew, Vice-Chair of Environment and Neighbourhood Committee and Chair of the Climate Emergency Task and Finish Group**

Sutton has declared a climate emergency and committed to the borough reducing its carbon emissions to net zero. This is an enormous ambition but the right thing to do for our environment and the health and security of future generations.

The Council cannot do this alone. There is only so much the Council can influence and implement and we need you - citizens, businesses, schools, charities, community groups - to take action to reduce your environmental impact. We also need radical action from national government to change regulations, laws and provide new finance to fund the changes that need to happen.

Through public events and surveys held in February and March 2020, the Council has been able to prioritise what the people of Sutton want to see happen. Thank you for sharing your ideas and concerns, your challenge, priorities and pledges.

Since we declared a climate emergency, the world has been affected by the COVID-19 pandemic. This has impacted some of our plans, and we've seen setbacks in the use of public transport and single use plastics. But we've also seen what a cleaner, greener world can look like; with less traffic and more people cycling and walking, and more people spending time locally. Climate change remains something we must all tackle, but we need to recognise that how we tackle it might be different for a while.

This plan is deliberately written to cover only the next few years. We need to act quickly and take decisions now that will set us well for the future. Technology is changing rapidly; so hopefully will support from national government and business. This means our plans will be refreshed annually as new options become available and regulations change. This also enables us to take into account the impact of COVID-19 and revise our plans accordingly.

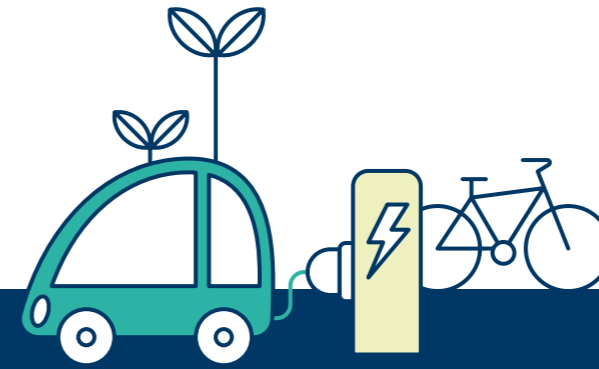
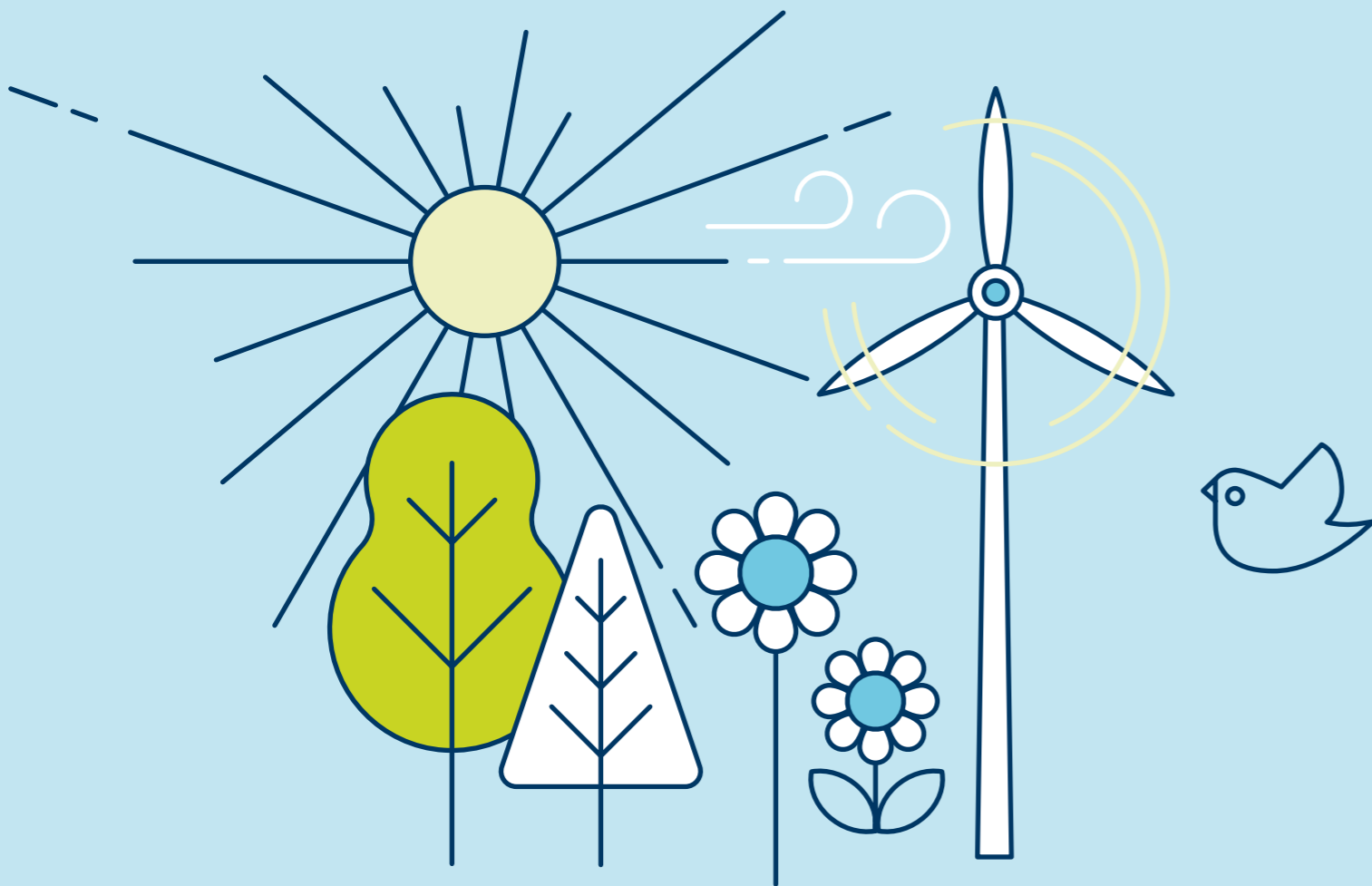
I hope you will be part of the action tackling climate change.

# THE VISION

## SUTTON WILL BE LONDON'S MOST SUSTAINABLE BOROUGH

Our zero carbon future means cleaner air, and more journeys taken by bike, public transport or on foot. We'll have more green spaces, connected to each other, protecting and enhancing nature and biodiversity. Our energy will be renewable and our homes will be warm in winter, cool in summer, and well insulated.

We will reduce waste and create a circular economy, with options to reuse, repair or re-manufacture the things we buy. We will be able to withstand heat waves, droughts and flooding caused by climate change. Everyone will know and play their role in reducing their impact on the environment.



## CLEANER AIR

By March 2022, **48%** of journeys in Sutton will be made by walking, cycling or public transport, rising to **63%** by 2041.

Meet the air quality standards as soon as possible.

## A GREENER BOROUGH

No overall reduction in green space in the borough.

Maintain and enhance biodiversity.

Plant **2,000** trees.



## ACHIEVING NET ZERO CARBON

All of the borough's energy needs will be met from renewable, community and local sources of energy, helping to deliver boroughwide zero carbon emissions.

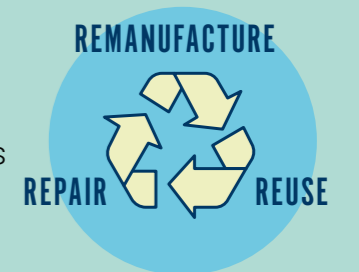
Take action to tackle fuel poverty.



## CREATING A CIRCULAR ECONOMY

Reduce waste and increase reuse and recycling from **50%** year on year.

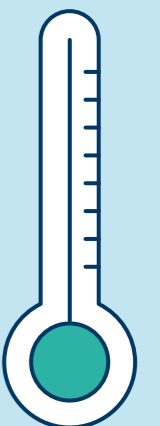
Embed sustainable procurement into the Council's buying and contracts.



## TACKLING CLIMATE CHANGE

Retain Sustainable Food City status each year.

Raise awareness of the climate emergency and the impacts of climate change on Sutton.



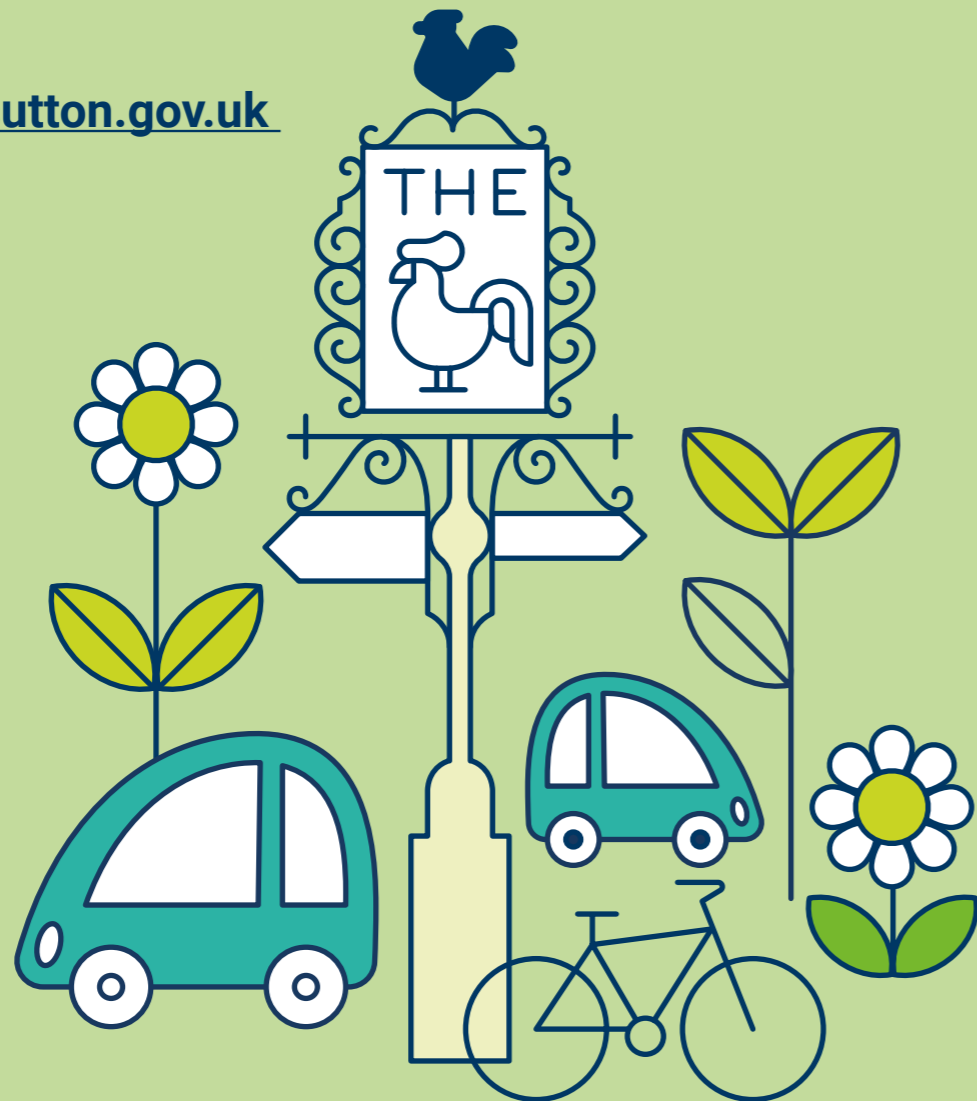
# BE PART OF THIS!

We all need to take action to reduce our environmental impact. That's every person, household, school, business, charity, public sector organisation and community groups.

The suggestions on the next page are from the people of Sutton.

More ideas? Want to be part of this?

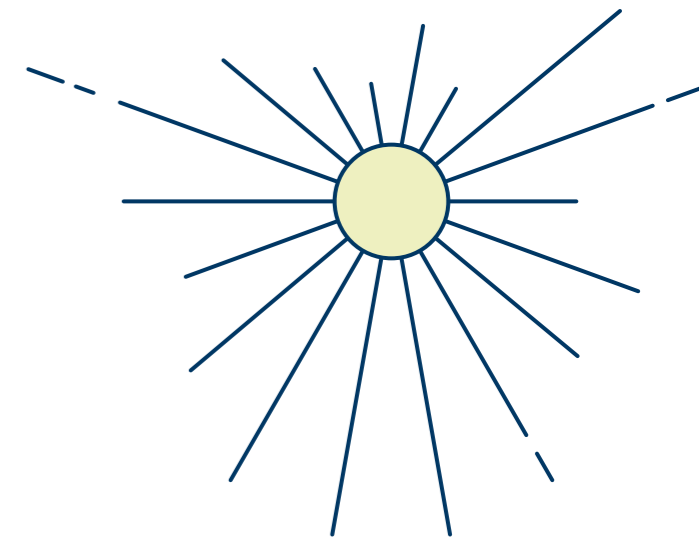
Let us know at [sustainability@sutton.gov.uk](mailto:sustainability@sutton.gov.uk)



- ENCOURAGE OTHERS TO CAR SHARE WHERE POSSIBLE WHEN PUBLIC TRANSPORT IS NOT SUITABLE
- SAVE RAIN WATER IN WATER BUTTS
- USE A REFILLABLE WATER BOTTLE
- I'VE GONE DIGITAL TO REDUCE MY PAPER USE EG REQUESTING ELECTRONIC BILLING NOT PAPER
- I OFTEN PICK UP RUBBISH FROM THE LOCAL STREETS
- TRY WHENEVER I CAN TO BUY LOCALLY
- USE HARD SOAP, BUY IN BULK AND REFILL WHERE POSSIBLE, USE BAR SHAMPOO TO CUT DOWN ON PLASTIC BOTTLES
- MEAT FREE DAYS
- USE LESS WATER FOR SHOWERS
- REDUCE THE AMOUNT OF PLASTIC PACKAGING I USE
- INVEST MY MONEY ETHICALLY
- DO ENVIRONMENTAL WORK AS A VOLUNTEER
- VOLUNTEER TO CLEAN UP PARKS
- COLLECT COLD WATER FROM TAP IN A BUCKET WHILE WAITING FOR IT TO RUN HOT. USE THAT FOR NEXT LAVATORY FLUSH
- DONATE CLOTHES RATHER THAN BINNING THEM
- TRY TO BUY VEG AND FRUIT LOOSE, NOT IN PLASTIC BAGS, AND PUT THEM LOOSE INTO MY SHOPPING BAGS
- RECYCLE EVERYTHING WE CAN, IE CARD, PAPER, PLASTICS, TINS, CARTONS, GLASS ETC
- GOING TO TAKE OWN CONTAINERS TO BUY MEAT, CHEESE AND FISH
- OWN AN ALLOTMENT
- USE SUSTAINABLE PUBLIC TRANSPORT INCLUDING TRAM, TRAIN AND BUS
- WEAR WARM CLOTHES AT HOME TO USE LESS HEATING
- BUY BOOKS AND CLOTHES FROM CHARITY SHOPS
- SWAPPED TO A TOTALLY SUSTAINABLE ENERGY PROVIDER
- WALK MORE
- USE OLIO APP, AND VOLUNTEER AS A FOOD WASTE HERO
- USE A BAG FOR LIFE. AVOID SINGLE USE PLASTICS

*Suggestions made by Sutton residents during the 2019 Environment Strategy consultation.*

# I PLEDGE TO...



- BUY FOOD WITH LESS PACKAGING ESPECIALLY PLASTIC
- BUY REUSABLE ITEMS
- BUY SUSTAINABLE CLOTHES, AVOIDING 'FAST FASHION'
- CHANGE MY ELECTRICITY SUPPLIER
- CHANGE THE MINDSETS OF THOSE AROUND ME
- CONTINUE TO RIDE MY BIKE AND WALK WHERE POSSIBLE
- CREATE MOSS WALLS IN AREAS OF HIGH TRAFFIC
- PLANT FOR WILDLIFE - ENCOURAGE THE BEES!
- CYCLE MORE AND USE LESS PACKAGING
- DRIVE LESS AND WALK MORE
- EAT LESS MEAT
- EAT MORE SUSTAINABLE FOOD
- ENCOURAGE OTHERS TO RECYCLE ITEMS AS MUCH AS THEY CAN!
- FIND OUT MORE ABOUT RENEWABLE ENERGY AND CHANGE HOW MUCH I USE
- GARDEN TO IMPROVE BIODIVERSITY
- GET RID OF OUR CAR AND USE ACTIVE TRAVEL INSTEAD
- HELP PLANTS GROW
- INFORM RESIDENTS THAT NEW DRIVEWAYS MUST BE CREATED WITH POROUS BRICKS (NOT CONCRETE)
- INFORM WORK COLLEAGUES ABOUT CLIMATE CHANGE
- INTRODUCE A LIBRARY OF THINGS
- MOVE FURTHER TOWARDS A PLANT-BASED DIET
- NOT BUY ANY CLOTHES FOR A YEAR
- PLANT A HEDGE OR TREE
- PLANT A TREE IN A SUTTON PARK
- WASH PLASTIC CONTAINERS
- PROMOTE SUTTON COMMUNITY FARM AND WALK MORE
- RECYCLE MORE AND REMEMBER MY BAG FOR LIFE
- REDUCE MY FOOD WASTE
- REDUCE PURCHASES OF READY MADE MEALS
- REGULAR LITTER PICKS
- REMEMBER TO SWITCH THE REMOTE OFF
- USE PUBLIC TRANSPORT WHEN IT'S THE MORE AFFORDABLE OPTION
- WALK, CYCLE OR GET THE BUS TO WORK
- SPREAD THE WORD AT EVERY OPPORTUNITY
- STOP BUYING TAKEAWAYS
- STOP USING PLASTIC
- SWITCH MY PC AND MONITOR OFF
- SWITCH TO A RENEWABLE ENERGY SUPPLIER
- SWITCH TO HYBRID OR EV WHEN I CHANGE MY CAR
- USE THE GOSUTTON BUS
- WATER USE REDUCTION CAMPAIGN
- SAVE WATER
- WORK FROM HOME
- TIME MY SHOWERS TO SAVE WATER
- TURN THE TAP OFF AFTER BRUSHING MY TEETH
- USE A TIMER ON MY CENTRAL HEATING
- TAKE OUT MY PLUG SOCKETS AT HOME
- USE CLOTH NAPPIES INSTEAD OF DISPOSABLE
- USE MORE PUBLIC TRANSPORT
- USE MY CAR LESS AND NO FLYING THIS YEAR
- VOLUNTEER WITH CONSERVATION ORGANISATION

*Pledges made by Sutton residents at the "pop-up" events in 2020.*

# CLEANER AIR

## THE VISION

Sutton's air will be clean and safe.



## THE CURRENT SITUATION.

Improving air quality is a priority and it's one of the top three issues residents want the Council to tackle.<sup>1</sup> Throughout the borough there are two key local air pollutants of concern. These are nitrogen dioxide and particulate matter. The dominant source of both pollutants is road traffic, but other significant sources include industrial and domestic heat and power generation, construction, and domestic biomass burning.

The London Borough of Sutton is compliant with the National Air Quality Standards for all pollutants except nitrogen dioxide. However, there is no safe exposure limit to particulate matter, meaning that to ensure the health of our residents and those who visit the borough, we must go beyond compliance. Carbon dioxide is not considered to be a local air pollutant because, under normal circumstances, it does not exist in sufficient concentrations to be demonstrably harmful to human health.



**Nitrogen dioxide** and nitric oxide are released into the atmosphere when fuel is burned. Examples include petrol and diesel in a car engine, natural gas in a home central heating boiler, and from power stations. High levels of nitrogen dioxide can inflame the airways in our lungs and over a long period of time affect how our lungs work. People with asthma are particularly affected.

Source: <https://uk-air.defra.gov.uk/assets/documents/reports/aqeg/nd-summary.pdf>

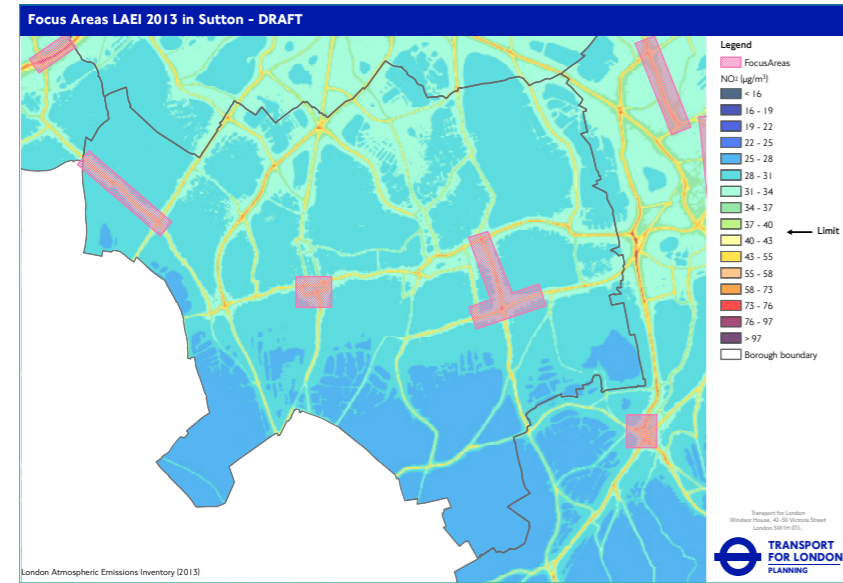
**Airborne particulate matter** is a collection of solid and liquid materials that range from a nanometer in diameter to around 100 micrometres. It comes from natural and human sources. Sources include the burning of fossil fuels, trace metals, mechanical abrasion e.g. from vehicle braking and tyres and dust from construction sites and quarrying. People most at risk are those with pre-existing lung or heart disease, the elderly and children. The most severe health impacts are from long-term exposure but there is evidence that short-term exposure can cause illness and even death.

Source: <https://uk-air.defra.gov.uk/assets/documents/reports/aqeg/pm-summary.pdf>

1. London Borough of Sutton survey of residents and businesses on sustainability, February-March 2018

The biggest source of air pollution emissions is road transport so this is the Council's main focus. The Greater London Authority has designated three air quality focus areas in Sutton. These are locations with high levels of pollution that people are exposed to.

The three areas are: Central Road, Worcester Park; Woodcote Road, Stanley Park Road & Stafford Road, Wallington; and Chalk Pit Road, Grove Road, Sutton Court Road & Sutton Park Road, Sutton.



Map of the borough's three air quality focus areas. Shades of blue are least polluted areas; shades of amber, red and brown are the most polluted areas. The red hatched areas are the three focus areas in the borough boundary.

Reducing the number of motor vehicle journeys will improve air quality, reduce congestion and reduce the barrier a busy road creates between communities. Walking and cycling supports healthier lifestyles.

The Council recognises that lots of people drive in Sutton because the public transport isn't good enough in some parts of the borough,<sup>2</sup> and the cycle network could be better. The majority of journeys made in Sutton are less than 3 miles in distance<sup>3</sup> and so could be done by foot, cycle or public transport.

The Council acknowledges there are concerns about the Energy Recovery Facility at Beddington and its impact on air quality. It is a state-of-the-art facility that has to meet stricter standards for nitrogen dioxide than European Industrial Emissions Directive limits. Compliance will be monitored by the Environment Agency on a continual basis. Managing waste at the Energy Recovery Facility rather than landfilling it will save 128,000 tonnes of carbon emissions each year.<sup>4</sup>

The Council will continue to work with Transport for London to improve the public transport offer in Sutton, and walking and cycling routes. It will continue to lobby for Sutton Link to be funded and developed in the future.

As well as transport, air pollution is caused by boilers and wood-burning stoves, emissions from construction sites and bonfires. The Council uses its planning powers to make sure new developments do not worsen air quality. This includes during demolition, construction and once operational, for example from vehicles and energy use.

## THE TARGETS

- ▶ By March 2022, 48% of journeys in Sutton will be made by walking, cycling or public transport, rising to 63% by 2041.<sup>5</sup>
- ▶ By March 2022, 36% of people will be doing 20 minutes of active travel a day, rising to 70% by 2041.<sup>6</sup>
- ▶ By December 2021, 24% of Sutton's population will be within 400m of the strategic cycle network, rising to 37% by 2041.<sup>7</sup>
- ▶ Implement the air quality action plan, meeting the national air quality standards for nitrogen dioxide as soon as possible.
- ▶ Continue to take action to reduce levels of particulate matter.

## WHO'S INVOLVED

- ▶ Transport for London
- ▶ The Council - planning, parking, street design, public health, air quality, highways
- ▶ People who live, work and study in Sutton
- ▶ Businesses in Sutton
- ▶ The Sutton Plan partners

## STRATEGIES

- ▶ [Air Quality Action Plan](#)
- ▶ [Sustainable Transport Strategy](#)
- ▶ [Cycling Strategy](#)
- ▶ [Ultra Low Emission Vehicle Strategy](#)
- ▶ [Local Plan Policy 34 - Environmental Protection](#)



2. [Local Plan, 2018, page 125](#)

3. [Cycling Strategy, 2017, page 1](#)

4. More information can be found on Sutton Council's website: [https://www.sutton.gov.uk/info/200449/waste\\_and\\_recycling/1445/beddington\\_energy\\_recovery\\_facility/2](https://www.sutton.gov.uk/info/200449/waste_and_recycling/1445/beddington_energy_recovery_facility/2)

5. The baseline for 2014/15-2016/17 is 46%. In March 2022 we will report on data from 2018/19-2020/21. The March 2022 data will be available and reported on in December 2024.

6. Active travel is defined by TfL as people undertaking at least twenty minutes of walking or cycling a day, either by two blocks of ten minutes or in a single block. The Sutton baseline for 2014/15-2016/17 is 28%.

7. The baseline for 2016 is 0%.



# A GREENER BOROUGH

## THE VISION

More than half of Sutton's space will be green space.



## THE CURRENT SITUATION.

The borough has over 1,146 hectares of protected green space, some agricultural land and 34 allotment sites. There are 54 Sites of Importance for Nature Conservation, 11 Local Nature Reserves and 42 hectares of chalk grasslands. These make up about 9% of London's chalk grasslands.<sup>8</sup> The Wandle Valley Regional Park, which covers the River Wandle and the network of adjoining parks and open land, acts as a green corridor, extending over much of the north and east of the borough. The borough has around 145,500 trees in streets, gardens and private land, but is one of London's least wooded boroughs. Trees cover about 2.4% of Sutton's land area.

The River Wandle runs for 5.9km in the borough and is a designated Site of Metropolitan Importance along its whole length within Sutton. It is one of the only chalk streams in London and one of only around 200 in the world. Through targeted improvement works, it is regaining some of its character and species, after many years of neglect and high pollution levels. In the west of the borough is Beverley Brook, which joins the River Thames at Barnes. The borough has a number of lakes and ponds, and a small amount of reedbed. Good water quality is vitally important for biodiversity. The restoration of Beddington Farmlands will include wet grassland, lakes, reedbeds, meadowland and heathland and create one of the largest nature reserves in London.

Green spaces are important for the borough's natural environment and quality of life. They support wildlife habitats and biodiversity, provide places for leisure and recreation and promote health and wellbeing. 90% of residents use the borough's parks and open spaces.<sup>9</sup> High biodiversity means a variety of plants and animal species.

The benefits to maintaining high levels of native flora and fauna include human wellbeing, food growing, soil structure, carbon capture, helping keep urban areas cool during heat waves<sup>10</sup> and flood protection. Biodiversity is increasingly being shown to have significant positive impacts on physical and mental health. Native trees are important for biodiversity, and the right trees in the right places can improve air quality.



8. [Sutton Council Biodiversity Strategy](#)

9. [London Borough of Sutton Residents Survey \(2019\)](#)

10. The urban heat island effect occurs when urban areas are much warmer than surrounding rural areas. This is because of the rapid-heating of artificial surfaces and waste heat from buildings, people, vehicles and construction. Nighttime temperatures remain warm because the heat is trapped between buildings.

It can be difficult to recognise the benefits of green spaces, because they typically do not have an obvious financial value. 'Natural capital accounting' is changing this, by estimating a financial value on the benefits green spaces provide, including flood protection, absorbing carbon dioxide, and supporting biodiversity, as well as the benefits to people of having space to play and relax. By using natural capital accounting, the Council aims to recognise the true value of green assets within the borough, so it can weigh this against the cost, for example, of tree maintenance. The Natural Capital Accounts for London indicate that for every £1 spent by councils on green spaces, there are £27 worth of benefits, for example through physical and mental wellbeing.<sup>11</sup>

Sutton has a good amount of green space but not all green spaces have equal benefits. Well-managed chalk grasslands or wetlands offer far more for biodiversity, carbon sequestration and flood protection than large areas of short mown amenity grass with few species. Sutton has lots of small green spaces and we need to improve the links between them. 'Green corridors' support nature and offer cool continuous corridors for walking and cycling during heat waves. Not everyone in the borough has a local park or green space nearby they can use. 15% of the borough is an area of nature conservation deficiency.<sup>12</sup> We will prioritise these places. This is our contribution to helping London become a National Park City.<sup>13</sup>

Space to create large new parks, nature reserves and green open spaces is limited, so we need new green spaces to be created in the form of living walls or biodiverse roofs, or through creative approaches like improving road verges for biodiversity, pocket parks, community tree planting and food growing spaces. We need to build new homes in Sutton, so Sutton's planning policies seek to achieve this whilst retaining the existing open amount of open space in the borough, protecting areas rich in native biodiversity and increasing the amount of 'green infrastructure' in new developments.<sup>14</sup>

The government recently mandated 'Biodiversity Net Gain' for all local planning authorities in England, which means that all new planning applications should provide a 'net gain' in habitats through each development. This consists of identifying and quantifying the existing habitats on site ('biodiversity units'), and then calculating the difference made by the planning application. This determines if the site is providing a net gain for biodiversity.

Sutton is ahead of the national curve, having adopted No Net Loss and Net Gain (where feasible) through the Local Plan and Technical Guidance Note: Building a Sustainable Sutton<sup>15</sup> and adopted London's first Compensation Tariff, of £94,000 per 'generic' biodiversity unit.

The main aim is to deliver biodiversity gains on each development, but if this is not achievable and the developer will deliver a Net Loss, they will pay the Compensation Tariff rate to deliver the actions outlined in the Biodiversity Strategy.

Sutton will seek to further increase the amount of biodiversity delivered through each planning application, by incorporating a 20% net gain uplift (or 2 units per hectare, whichever is greater) to each development, through the updated Local Plan in 2023, as well as mandatory levels for other biodiversity features (such as nesting / roosting boxes and hedgehog holes).

## THE TARGETS

- ▶ No overall reduction in the amount of green space in the borough.<sup>16</sup>
- ▶ By 2050, at least half of Sutton's land area will still be green space.<sup>17</sup>
- ▶ Plant 2,000 trees every year (community, council and developer-led schemes all count).
- ▶ Advise and monitor Viridor's delivery of the Beddington Farmlands landfill site as one of the largest nature reserves in London by 2023.

## FOCUS AREAS

- ▶ Maintain and enhance the biodiversity value of the borough.

## WHO'S INVOLVED

- ▶ Sutton Housing Partnership
- ▶ Housing associations
- ▶ Sutton Nature Conservation Volunteers
- ▶ South East Rivers Trust
- ▶ Wandle Valley Regional Park Trust
- ▶ Sutton Council - biodiversity, parks, trees, highways, planning and sustainability
- ▶ People who live, work and study in Sutton
- ▶ Businesses
- ▶ The Sutton Plan partners

## STRATEGIES

- ▶ Local Plan:
  - [Policy 5 - Wandle Valley Renewal](#)
  - [Policy 13 - Housing and Garden Land](#)
  - [Policy 25 - Open Spaces](#)
  - [Policy 26 - Biodiversity](#)
  - [Policy 33 - Climate Change Adaptation](#)
- ▶ [Parks and Open Spaces Strategy](#)

11. *Natural Capital Account for London, November 2017*, [https://www.london.gov.uk/sites/default/files/nca\\_supplementary\\_document.pdf](https://www.london.gov.uk/sites/default/files/nca_supplementary_document.pdf)

12. See Table 8.12 in *Authority Monitoring Report 2018-19*

13. For more information see the National Park City website: <http://www.nationalparkcity.london/>

14. *Local Plan, Policy 25, page 88, Policy 26, page 90 and Policy 33, page 114*

15. *Technical Guidance Note: Building a Sustainable Sutton*

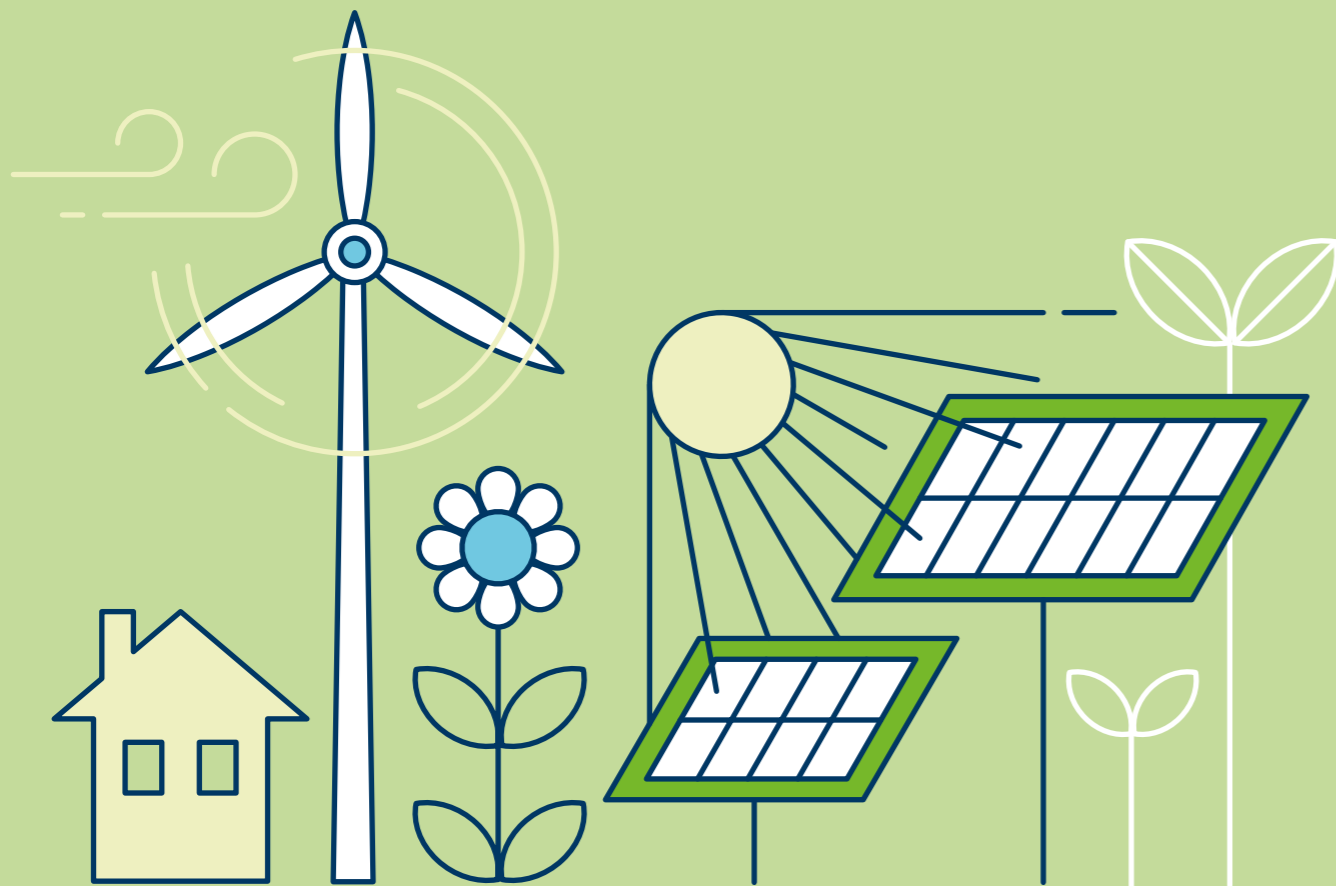
16. The baseline for this is the *Authority Monitoring Report 2016-17*. This sets a baseline of 605.9 hectares of green belt, 529.1 hectares of Metropolitan Open Land (MOL) and 518 hectares of Public Open Space (which includes some land designated as Green Belt or MOL).

17. The Greater London Authority dataset '*London Borough green and blue cover summary statistics*' sets a 2019 baseline of 49.69% 'green' and 1.25% 'blue' (lakes, rivers, ponds etc.) totalling 50.94% green and blue.

# ACHIEVING NET ZERO CARBON

## THE VISION

The borough will have net zero carbon emissions.



## THE CURRENT SITUATION.

Energy usage followed by vehicle use is the main cause of carbon emissions in Sutton, and therefore the dominant contributor to climate change.<sup>18</sup> How the emissions from road traffic will be reduced is covered in the Cleaner Air chapter, with this chapter focusing on energy use.

Homes and businesses in Sutton are reliant on energy sources that in the main contribute to greenhouse gas emissions. Over time, the national grid is decarbonising as more energy comes from renewable sources, with 29 per cent of the UK's electricity coming from renewable sources in 2017.<sup>19</sup> Sutton has a growing population, and as new homes are built the demand for energy will increase.

We need to generate low carbon and renewable energy locally, so that more demand for energy doesn't have a negative impact on carbon emissions and climate change. We need to determine the right heat and energy mix for the borough, based on local geographical and geothermal opportunities. This means solar panels on buildings, heat pumps which take heat from the ground or air, or using local waste heat sources like the Energy Recovery Facility in Beddington.

Waste heat is considered partially renewable,<sup>20</sup> depending on the waste it is burning, and is lower carbon energy than coal or gas power stations. The Sutton Decentralised Energy Network Limited has been created to supply low carbon heating and hot water, using the waste heat from the Energy Recovery Facility. Once established, this network could be extended to supply more businesses and homes in the borough and beyond.

An easy decision every business and household can make is to switch their energy supply to a renewable tariff. Large businesses and organisations should enter into a Power Purchase Agreement to make sure new renewable energy capacity is being created. Generating more renewable energy within the borough also needs to happen.

Uptake of solar power is low in London and Sutton, and to begin to address this, the Council has installed solar panels on suitable buildings it owns. Sutton has been part of three group purchasing schemes, making it cheaper for households to purchase solar panels. Over 1,300 households registered and 276 have progressed with solar panel installation. Community energy schemes<sup>21</sup> are an option for community groups to deliver and the Council wants to support this.

Better insulation of homes reduces carbon emissions and makes them warmer, healthier and cheaper to heat. Households in fuel poverty are categorised as having low income, poor energy efficiency and energy costs that are above the national average. Were they to spend that amount, they would be left with an income that is below the official poverty line.<sup>22</sup> Around 10% of households in Sutton are thought to be in fuel poverty, just below the national average.<sup>23</sup> Retrofitting homes across the borough to reduce carbon emissions provides an opportunity to create warmer homes and tackle fuel poverty. Sutton Housing Partnership already has a home improvement programme, and the Council offers free home visits to fuel poor households or where people have certain medical conditions.

These visits are funded by energy companies who have obligations to help improve the energy efficiency of homes. The Council's Statement of Intent<sup>24</sup> extends the criteria of those eligible for a home visit, to ensure more vulnerable people in Sutton can benefit. We will provide information to homeowners and the wider public about ways to make homes warmer and save money on energy bills by improving energy efficiency and reducing the carbon footprint of their home.

## THE TARGETS

- ▶ The Council will achieve net zero carbon emissions across its estate and operations.
- ▶ The Council will switch to a renewable electricity supply from April 2021.
- ▶ All of the borough's energy needs will be met from renewable, community and local sources of energy, helping to deliver boroughwide zero carbon emissions.<sup>25</sup>

## FOCUS AREAS

- ▶ Take action to tackle fuel poverty.

## WHO'S INVOLVED

- ▶ Sutton Housing Partnership
- ▶ Housing associations
- ▶ Energy companies
- ▶ Voluntary and community sector
- ▶ Sutton Council - energy, regulatory services, planning and sustainability
- ▶ Sutton Decentralised Energy Network
- ▶ Organisations building new homes
- ▶ People who live, work and study in Sutton
- ▶ Businesses
- ▶ The Sutton Plan partners

## STRATEGIES

- ▶ Local Plan Policy 31 - Carbon and Energy
- ▶ Fuel Poverty Action Plan
- ▶ Town Centre Masterplan

18. <https://www.un.org/sustainabledevelopment/energy/> and <https://naei.beis.gov.uk/laco2app/>

19. *London Environment Strategy, page 210*

20. *Defra, and Office of National Statistics UK Environment Accounts 2019*

21. <https://www.communityenergy.london/>

22. *GOV.UK, Fuel Poverty Statistics*

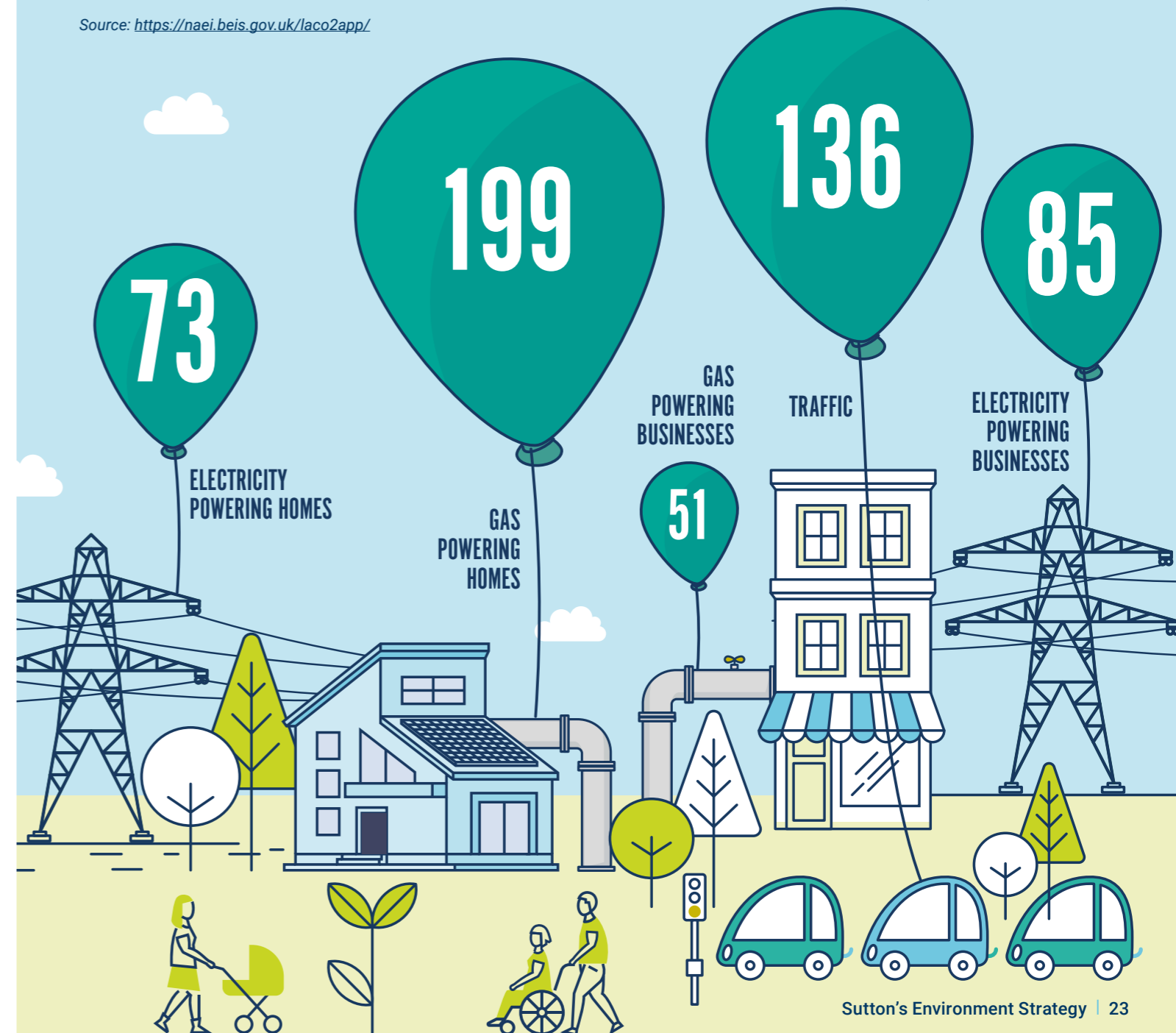
23. *Fuel poverty strategy, 2014, page 3*

24. *Sutton Council Statement of Intent*

25. <https://naei.beis.gov.uk/laco2app/> then search for Sutton

# WHERE ARE SUTTON'S CARBON EMISSIONS COMING FROM? IN KILOTONNES PER YEAR (2018)

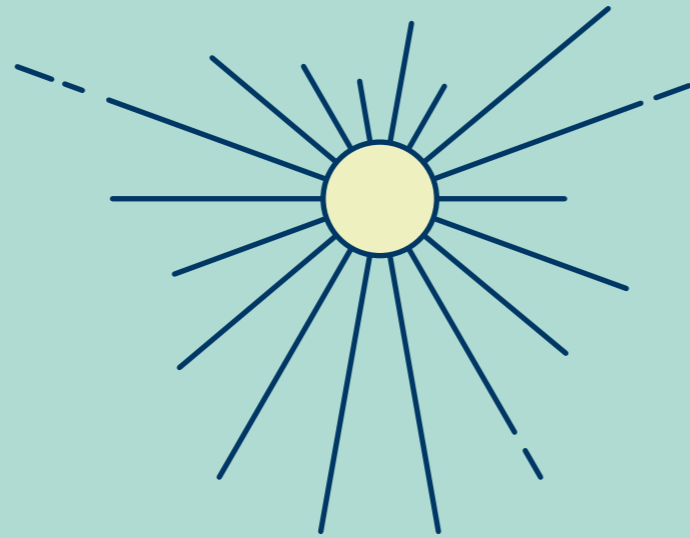
Source: <https://naei.beis.gov.uk/laco2app/>



# CREATING A CIRCULAR ECONOMY

## THE VISION

Waste will be reduced and a circular economy created.



## THE CURRENT SITUATION.

A circular economy means everything is reused, repaired, or re-manufactured into a new product or recycled. This is only possible if everyone switches to reusable rather than disposable; if manufacturers make their products repairable; and if recycling markets develop so that materials that currently cannot be recycled, can be. These changes are likely to need government intervention and regulation but customers can also challenge businesses about their packaging and products.

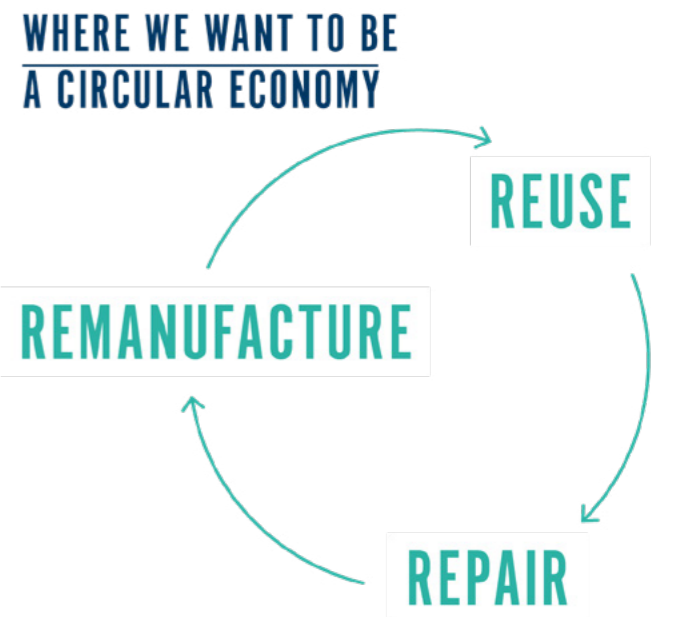
In the shorter-term people and businesses still need to reduce waste, including avoidable food waste, and recycle as much as possible, saving money and the planet.

The government's Resources and Waste Strategy published in 2018 sets out some bold plans on packaging, a deposit return scheme and changes to waste collections by local authorities. These plans are still in development and this strategy may change to reflect them in future.

In 2019/20 the Council spent £326m buying goods and services. The Council can contribute to its environmental objectives through its contracts, purchasing and commissioning of services. The Council has pledged to remove single use plastics from its operations and contracts. Part of this includes calling on supermarkets and other organisations to change to recyclable packaging. Other organisations and citizens can decide whether to purchase or hire

something used infrequently, avoiding purchases with excessive packaging, switching to reusing water bottles and coffee cups, and taking a reusable bag to the shops.

Businesses in the borough can access support to consider how they could adopt circular economy principles through Advance London.<sup>26</sup> It is estimated that by 2036, the circular economy could provide London with net benefits of at least £7bn every year in the sectors of built environment, food, textiles, electricals and plastics, as well as 12,000 net new jobs in the areas of reuse, remanufacturing and materials innovation.<sup>27</sup> COVID-19 presents an opportunity for a 'green recovery' that will deliver zero carbon commitments.



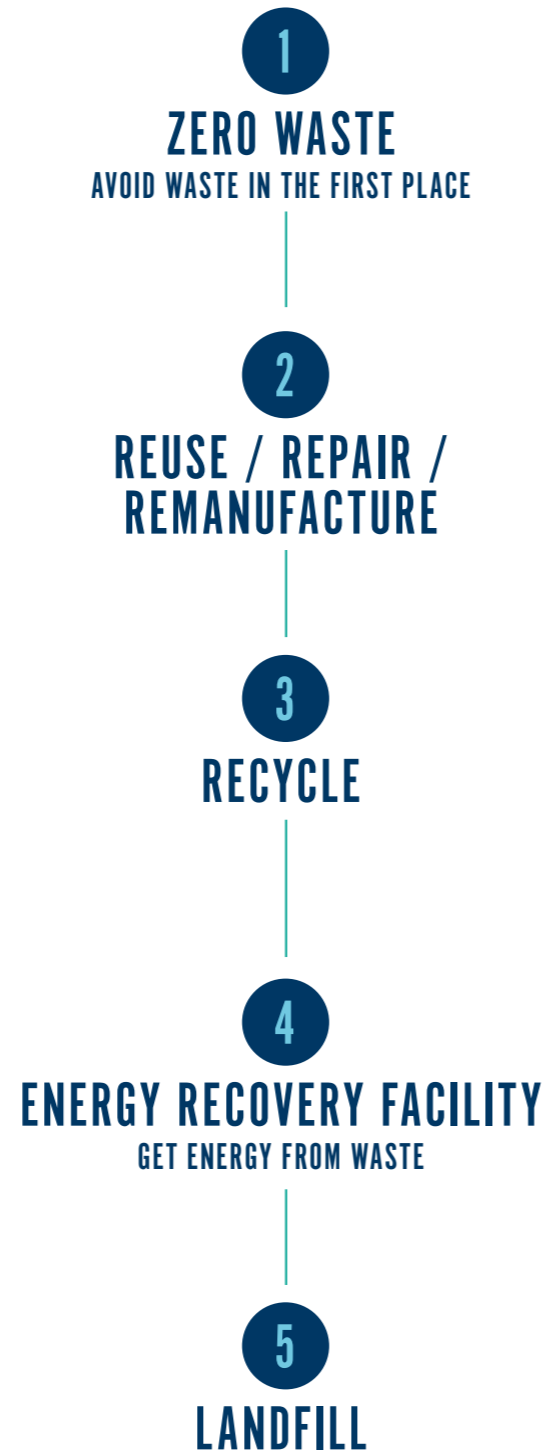
<sup>26</sup>. *Advance London*

<sup>27</sup>. *London Waste and Recycling Board, Circular Economy Routemap*



# WASTE HIERARCHY

IN ORDER OF PREFERENCE



## THE TARGETS

- ▶ Reduce waste and increase reuse and recycling from 50% year on year and target being the best recyclers in the UK.<sup>28</sup>
- ▶ Help residents reduce the amount of avoidable food waste they throw away by 20% by 2025.<sup>29</sup>

## FOCUS AREAS

- ▶ Embed sustainable procurement into the Council's buying and contracts.
- ▶ Encourage businesses to switch to circular economy business models.

## WHO'S INVOLVED

- ▶ Businesses
- ▶ Business Improvement Districts
- ▶ Advance London programme
- ▶ Sutton Council - economic development and sustainability
- ▶ People who live, work and study in Sutton
- ▶ The Sutton Plan partners

## STRATEGIES

- ▶ [Local Plan Policy 25 - Industrial Use](#)
- ▶ [South London Waste Plan](#)
- ▶ [Waste Minimisation Strategy](#)



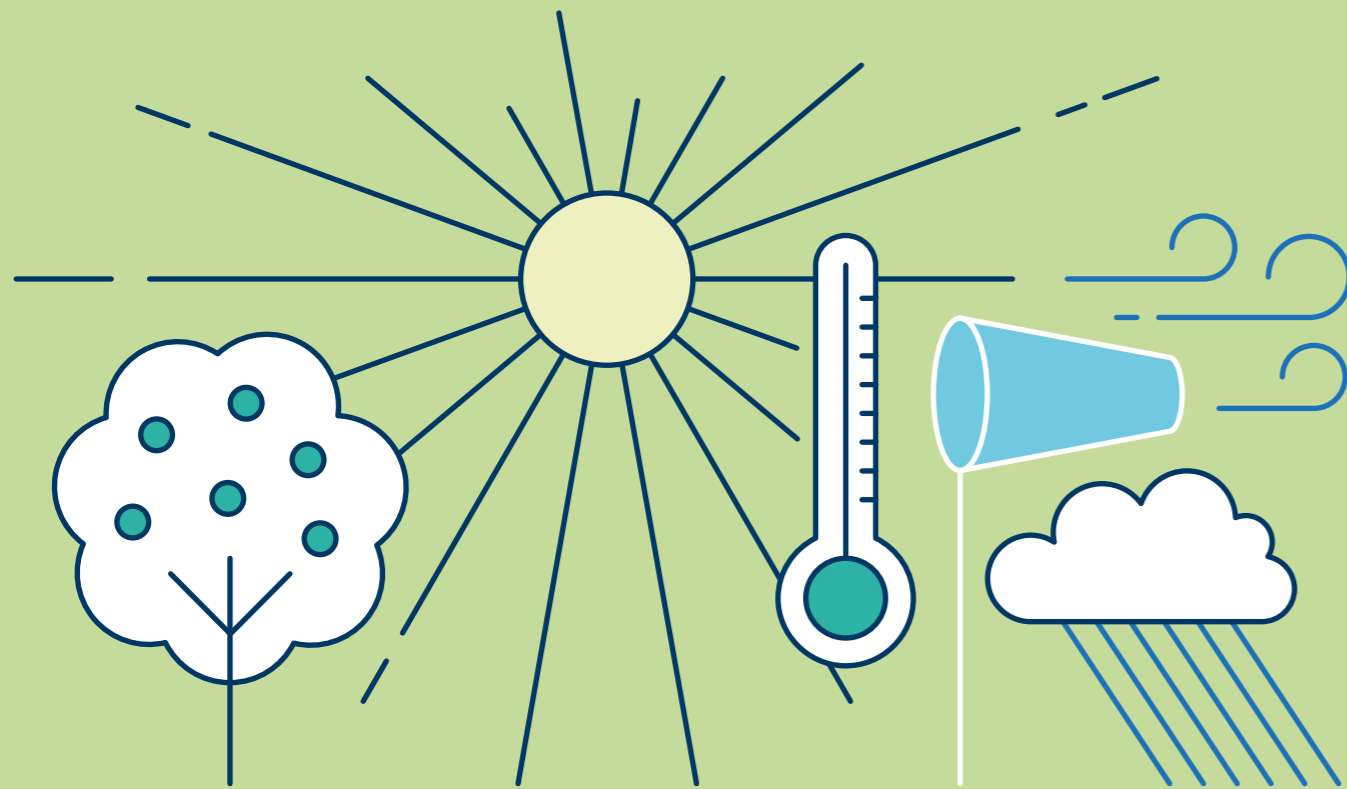
28. The baseline for household residual waste is 434.18kg per household in 2017/18, the food waste baseline is 7,392 tonnes in 2017/18 and Sutton's recycling rate is 50 per cent in 2018.

29. The food waste baseline is 7,392 tonnes in 2017/18.

# TACKLING CLIMATE CHANGE

## THE VISION

By taking urgent action, we will prevent the worst effects of climate change on people and infrastructure caused by flooding, heatwaves and loss of biodiversity.



## THE CURRENT SITUATION.

Climate change is already happening and Sutton needs to prepare for changing weather patterns. The International Panel on Climate Change indicates the world must keep global temperature rises below 1.5°C to avoid catastrophic impacts from climate change.<sup>30</sup> The borough needs to be prepared for heavy rainfall, extremes of temperature, and drought. The people living in the borough who are most vulnerable to these effects are the priority for building climate resilience.

According to the latest climate projections,<sup>31</sup> the UK is more likely to get warmer, wetter winters and hotter, drier summers, with more frequent and intense extremes of weather. We need to be prepared for greater variability in our rainfall as widespread flooding could cause major disruption and economic impacts if infrastructure (roads, railways and substations), businesses and schools flood.

Surface water flooding happens when heavy rainfall is unable to soak into the ground or drain into sewers but instead runs over land, causing flooding. 4,827 homes and 220 businesses in the borough are at low to medium risk of surface water flooding; with a further 2,860 homes and 220 businesses at high risk.<sup>32</sup> Sutton is ranked the 30th area in England most susceptible to surface water flooding.<sup>33</sup> The priority areas for flood alleviation schemes are Beddington Gardens, Worcester Park, Wallington Station and South Beddington.

With severe storms likely to become more common in future, it is important that through the planning process new developments are designed to minimise all sources of flood risk and the impact on the surrounding area. Sustainable drainage is one way to reduce the impacts of heavy rain.

It works by slowing down the flow of water, storing it and releasing it to the drainage network at a later time, to avoid overwhelming drains and causing flooding. This can be done by storage tanks but also planting and natural features. Sustainable drainage can improve water quality and create greener spaces.

3.7% of the borough, about 2,900 properties, are at medium or high risk of flooding from local rivers.<sup>34</sup> The areas most at risk are those along the River Wandle, Pyl Brook and Beverley Brook.

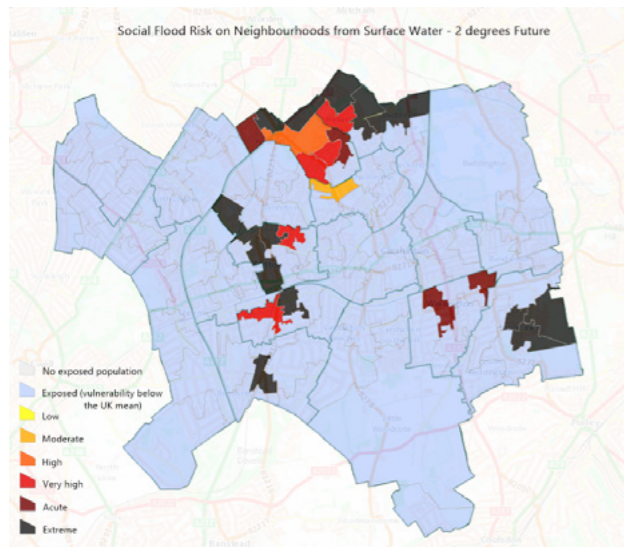


*How SuDS 'slow the flow'. Credit: Jane Porter*

30. For more information see the International Panel on Climate Change website: [https://www.ipcc.ch/news\\_and\\_events/pr\\_181008\\_P48\\_spm.shtml](https://www.ipcc.ch/news_and_events/pr_181008_P48_spm.shtml)

31. The latest UK climate projections (UKCP18) were released in November 2018. <https://www.metoffice.gov.uk/research/approach/collaboration/ukcp/index>

32-34. Local Plan, 2018, page 107



▲ **Map of the community flood risk associated with a global 2 degree temperature increase. Community flood risk measures where social vulnerability and exposure to flooding coincide in a neighbourhood. Darker colours mean increased risk.**

Although severe storms will occur more frequently with climate change, drought conditions are also expected to increase as summers become drier and hotter. London and the South East are already classed as 'seriously water stressed', meaning more water is taken from the natural environment than is sustainable in the long-term.

Increased drought conditions will affect water supply and habitats in the borough by reducing river levels, damaging water supply infrastructure and increasing demand. With less ability to continue to draw water from deep in the ground, we need to aim to reduce the amount of water we use to 110

## AVERAGE WATER USAGE PER PERSON, PER DAY

- ▶ Sutton currently 160 litres
- ▶ London 156 litres
- ▶ UK 139 litres
- ▶ New development standard in Sutton 110 litres

litres per person per day.<sup>35</sup> This will help make Sutton a more sustainable place.

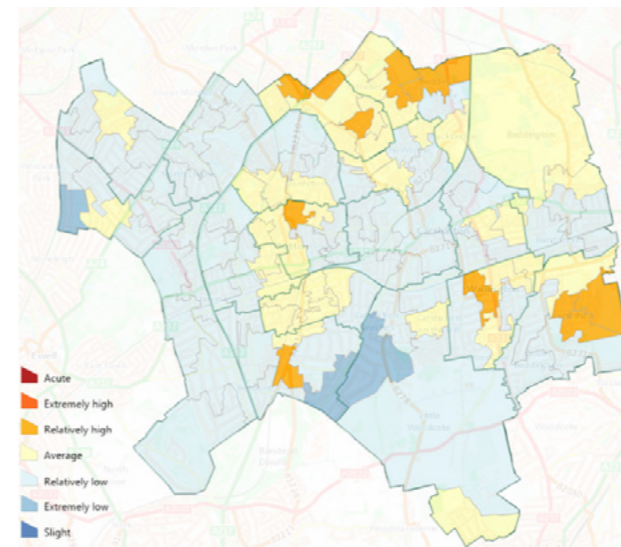
If global temperature rises are not prevented by reducing emissions, hot summers will become more common. The chance of a hot summer has already increased by between 12%-25% due to climate change. By 2050 this could be 50%. By the 2070s, hot spells<sup>36</sup> could increase from one every four years to four times a year.

Built up areas are particularly vulnerable to higher summer temperatures and localised heat waves and addressing the impacts of excess heat will become increasingly important.<sup>37</sup> Excess heat can particularly be a problem in places where people cannot easily reduce the temperature, for example because they are in hospital or live in a care home. The Council has an emergency planning role to make sure that timely advice is circulated. Planning powers

35. Water usage: *Sutton SES Water Annual Report 2017, page 3, aim 5*  
*London and UK Draft London Plan, 2017, new developments Local Plan, 2018, Policy 33, page 114*

36. A hot spell is defined as maximum daytime temperatures exceeding 30°C for two or more consecutive days. This triggers a public health warning from the Met Office.

37. This is due to the urban heat island effect which occurs when urban areas are much warmer than surrounding rural areas. This is because of the waste heat from buildings, people, vehicles and construction. Nighttime temperatures remain warm because the heat is trapped between buildings.



▲ **Map of heat vulnerability in the borough. This shows where the negative impacts of hotter summers and hot spells are more likely to occur, based on the level of vulnerability of each neighbourhood.**

can ensure buildings are not too hot to be habitable and have adequate ventilation. Trees and green spaces provide important 'cooling' benefits as well.

Whilst cold winters are less likely, extreme cold can be deadly, and tackling fuel poverty will help with this. In the same way as for extreme heat, people are more vulnerable if they are homeless or in a care home or hospital where it is harder to control the temperature. In developing plans around extreme heat, we will also consider extreme cold.

Climate change could mean we need to make roads from different materials or plant drought resident species in parks. Our native biodiversity could be challenged by the introduction of invasive (non-native) species

which are more suited to warmer weather, and falling river levels could have impacts for biodiversity as well as water use. Agriculture makes up 10% of the UK's greenhouse gas emissions.<sup>38</sup> There are two main ways people in Sutton can help reduce this. Growing food locally and buying locally grown food helps reduce emissions from agriculture. There will always be some waste, for example vegetable peelings and bones, but using as much as we can of what we buy, and reducing the amount of food that goes mouldy before we eat it, helps reduce emissions. The Council will support action on both.

## FOCUS AREA

- ▶ Raise awareness of the climate emergency, the impacts of climate change on Sutton, and the actions individuals can take.
- ▶ Increase the preparedness of Sutton's people, public services and infrastructure for extremes of temperature, drought and flooding.

## THE TARGETS

(targets in other chapters of the strategy will also tackle climate change)

- ▶ Retain Sustainable Food City status each year.
- ▶ Work with SES Water to help people reduce their daily water use to 138 litres by 2025.

38. Department for Business, Skills and Innovation: latest data 2018: [https://assets.publishing.service.gov.uk/government/uploads/system/uploads/attachment\\_data/file/862887/2018\\_Final\\_greenhouse\\_gas\\_emissions\\_statistical\\_release.pdf](https://assets.publishing.service.gov.uk/government/uploads/system/uploads/attachment_data/file/862887/2018_Final_greenhouse_gas_emissions_statistical_release.pdf)





## WHO'S INVOLVED

- ▶ Sutton Housing Partnership
- ▶ Housing associations
- ▶ Hospitals
- ▶ Care providers
- ▶ Sutton Council - emergency planning, flood risk management, regulatory services, sustainability and planning
- ▶ Environment Agency
- ▶ SES Water
- ▶ Thames Water
- ▶ People who live, work and study in Sutton
- ▶ Businesses
- ▶ The Sutton Plan partners

## STRATEGIES

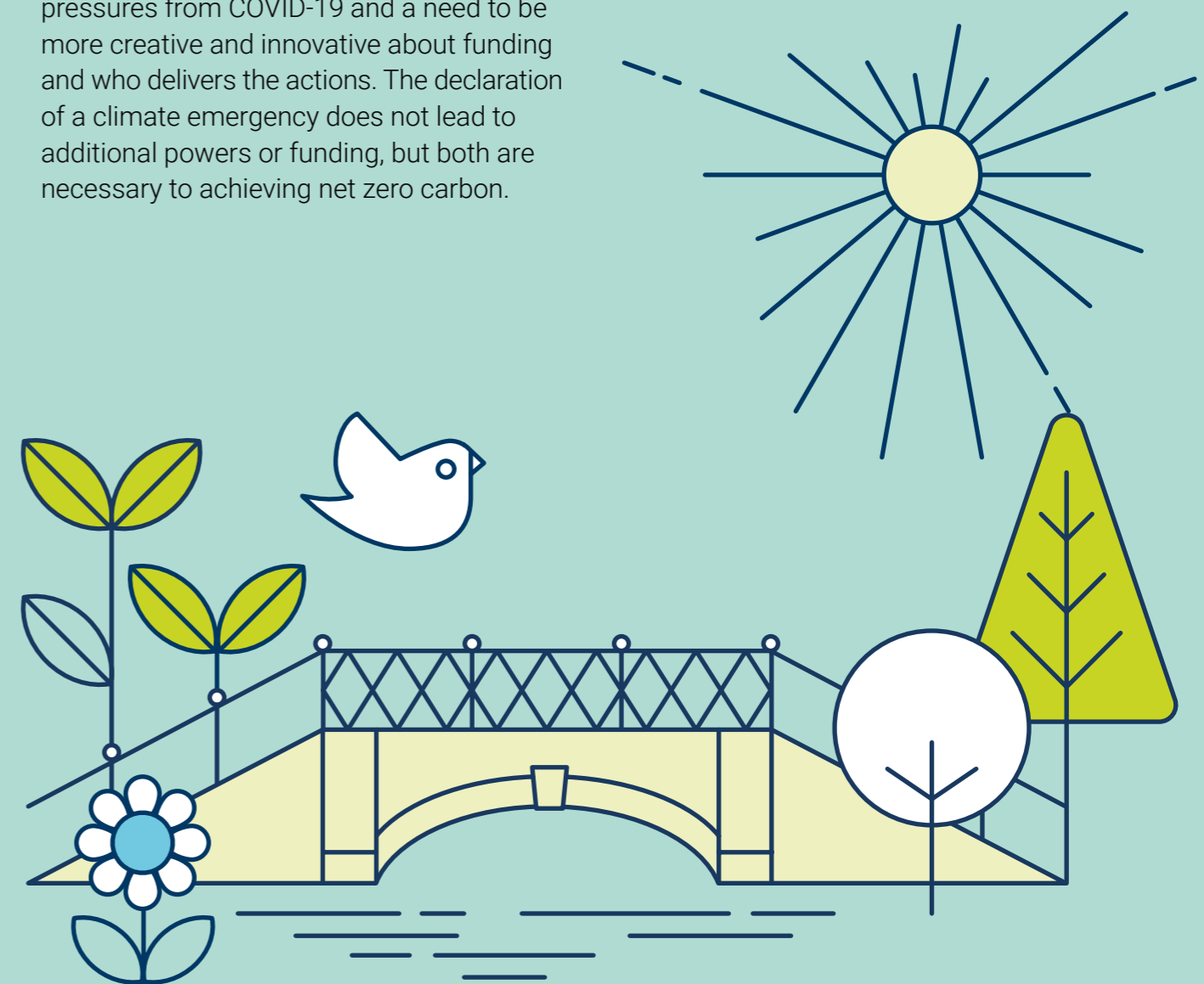
- ▶ [Flood risk management strategies](#)
- ▶ Local Plan:
  - [Policy 13 - Housing and Garden Land](#)
  - [Policy 31 - Carbon and Energy \(includes energy insulation and ventilation\)](#)
  - [Policy 32 - Flood Risk and Sustainable Drainage](#)
  - [Policy 33 - Climate Change Adaptation](#)

# IMPLEMENTATION

Achieving net zero carbon is highly ambitious and cannot be achieved by the Council or Sutton residents alone. Global, national, regional and local action must all happen together. Sutton Council remains committed to ensuring that the borough of Sutton continues to lead London in its approach to sustainability and the environment.

Nevertheless, this comes at a time of continued pressure on council budgets, new pressures from COVID-19 and a need to be more creative and innovative about funding and who delivers the actions. The declaration of a climate emergency does not lead to additional powers or funding, but both are necessary to achieving net zero carbon.

The lockdown during the coronavirus pandemic in 2020 provided glimpses of what a greener Sutton could look like. In recovering from coronavirus, the world, the UK and Sutton has an opportunity to pursue a "green recovery". The pandemic has also threatened some of the progress made, especially on public transport usage and single use items. These challenges need to be overcome as we tackle the climate emergency.



## CORPORATE PRIORITIES

This Environment Strategy supports the London Borough of Sutton to achieve all four of its corporate priorities: Being Active Citizens, Making Informed Choices, Living Well Independently and Keeping People Safe.

The Council is able to take action across its services and functions, and through its role in shaping and supporting the community in the borough. It will seek to influence change in citizens, businesses, public sector partners, developers and other organisations in the borough.

## FUNDING AND RESOURCING

This strategy will be delivered by:

### 1. Internal resources/staffing

Delivering the strategy will involve a 'whole council' approach, with officers across the Council working on the actions. Major changes to the Council's estate and the construction of new council homes will be used as an opportunity to demonstrate Sutton's sustainability commitments.

### 2. Grants/funding applications/partnerships

The Council will bid for available funding, sometimes in partnership with other organisations. We will work with organisations who have their own targets and funding for sustainability initiatives or are best placed to deliver a project, including the Sutton Plan partners. Technological and digital changes may bring new opportunities that we need to adapt to.



### 3. Investments that cover their own costs

The Council will explore options to fund sustainability schemes through an 'invest to save' model, or to invest in assets in a way that provides income in the future. The carbon offset fund, paid by developers when they are unable to offset some of the carbon emissions of a development on the site, will be used for sustainability projects, particularly those related to energy and fuel poverty.



## LONDON-WIDE ACTION

Sutton is represented at London level by elected members on the Transport and Environment Committee of London Councils; and at senior officer level on the London Environment Directors Network.

The Council supports the Joint Statement on Climate Change<sup>39</sup> issued by these bodies, and is working with other boroughs on seven pan-London programmes:



### #1 Retrofit London:

Retrofit all domestic and non-domestic buildings to an average level of EPC B.

Programme timescale: 2020 – 2030.

### #2 Low-carbon development:

Secure low carbon buildings and infrastructure via borough planning.

Programme timescale: 2020 – 2022.

### #3 Halve petrol and diesel road

**journeys:** Halve road journeys made by petrol and diesel via combined measures that can restrict polluting journeys and incentivise sustainable and active travel options.

Programme timescale: 2020 – 2030.

### #4 Renewable power for London:

Secure 100% renewable energy for London's public sector now and in the future.

Programme timescale: 2020 – 2030.

### #5 Reduce consumption emissions:

Reduce consumption emissions by two thirds, focusing on food, clothing, electronics and aviation.

Programme timescale: 2020 – 2030.

### #6 Build the green economy:

Develop London's low carbon sector and green our broader economy.

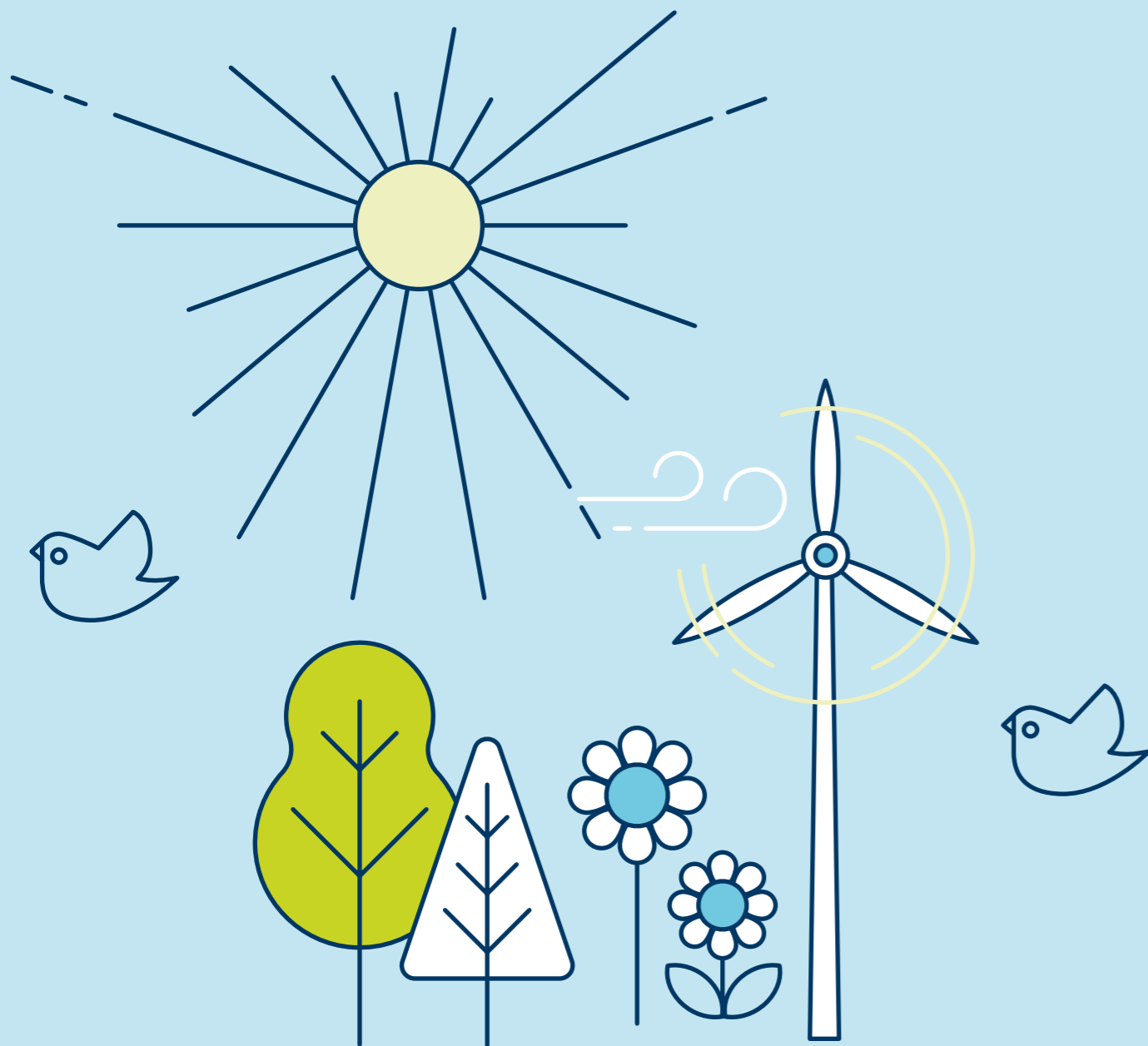
Programme timescale: 2020 - 2030.

### #7 Creating a resilient and green London

<sup>39</sup>. The full statement can be read here: <https://www.londoncouncils.gov.uk/our-key-themes/environment/climate-change>

# ASKS OF OTHERS

Sutton Council contributes around 3% of the total borough emissions. This means we have asks of others in order to achieve net zero carbon emissions.



## WE NEED EVERY BUSINESS, ORGANISATION AND PUBLIC SECTOR AGENCY IN THE BOROUGH TO:

- ▶ Encourage your staff and customers to walk, cycle or use public transport to get to you. Make it easy for them to do this by providing facilities such as cycle parking, showers and season ticket loans.
  - ▶ Allow staff to work from home where this is practical for their job.
  - ▶ Switch your business fleet to electric vehicles or bikes and install electric vehicle charge points at your premises for customers to use as well.
  - ▶ Switch your energy to a renewable tariff and enter into a power purchasing agreement to increase the supply of renewable energy.
  - ▶ Get an Energy Performance Certificate (EPC) for your buildings and site and identify ways you can reduce your energy bills by installing insulation, such as through switching your light bulbs to LED and installing energy efficiency measures such as insulation to reduce your energy consumption and bills.
  - ▶ Install solar panels on your roof and when replacing boilers or other heating equipment, opt for a heat pump or join a district heating system where this is technically feasible.
  - ▶ Recycle everything you can, including food waste.
  - ▶ Minimise unnecessary packaging if you supply goods and opt for fully recyclable packaging.
  - ▶ Eliminate single use items from your company's operation.
- 
- ▶ When undertaking new building work or maintenance, choose sustainably sourced materials and maximise opportunities for green roofs and solar panels.
  - ▶ Manufacturers need to adopt circular principles - choosing materials based on their sustainability and longevity; enabling repairs and the availability of spare parts; and the full recyclability of products at the end of their useful life.
  - ▶ Provide information for your staff about how they can reduce the company's environmental impact.
  - ▶ Engage your supply chain and work with businesses that take sustainability seriously.
  - ▶ Seek sustainability accreditation for the action you are taking and celebrate the changes to inspire others.

## WE NEED EVERY SCHOOL IN THE BOROUGH TO:

- ▶ Encourage staff and pupils to walk, cycle or use public transport. Make it easy for them to do this by providing bike parking, showers and season ticket loans for staff. Gain STARS accreditation if you haven't already.
- ▶ Launch a School Streets programme outside your school to improve air quality where this is feasible.
- ▶ Install electric vehicle charging points for staff vehicles and switch any vehicle fleet to electric.
- ▶ Recycle everything you can, including food waste from your canteens.
- ▶ Eliminate single use items from your school's working practices.
- ▶ Install water fountains and encourage reuse.
- ▶ Engage your supply chain and work with businesses that take sustainability seriously.
- ▶ Switch your energy to a renewable tariff and enter into a power purchasing agreement to increase the supply of renewable energy.
- ▶ Switch your light bulbs to LED and sign up to be part of the schools retrofit programme provided by the GLA, to improve the energy efficiency of your buildings.

- ▶ Install solar panels on your roof and when replacing boilers or other heating equipment, opt for a heat pump or join a district heating system where this is technically feasible for your school and premises.
- ▶ When undertaking new building work or maintenance, choose sustainably sourced materials and maximise opportunities for green roofs and solar panels.
- ▶ Teach pupils about the environment, including how to take action on climate change, how to recycle correctly, and how to cycle safely.
- ▶ Use your grounds to engage young people about the environment and curriculum topics - such as gardening, rainfall and sustainable drainage, and mental wellbeing.
- ▶ Provide information for young people, their parents and your staff about how they can reduce the school's environmental impact.



## WE NEED EVERY HOUSEHOLD IN THE BOROUGH TO:

- ▶ Switch to a renewable or low carbon energy tariff.
- ▶ Get an Energy Performance Certificate (EPC) for your property and identify ways you can reduce your energy bills by installing energy efficiency measures such as insulation.
- ▶ Opt for energy efficient (A++) appliances such as washing machines and boilers.
- ▶ When doing home renovation work, choose sustainably sourced materials and maximise opportunities for insulation, green roofs and solar panels.
- ▶ When replacing boilers or other heating equipment, opt for a heat pump or join a district heating system where this is technically feasible for your property.
- ▶ Walk, cycle and use public transport as much as you can.
- ▶ Sign up to a car sharing service instead of having a car.
- ▶ Take reusable bags, cutlery and coffee cups when out and about.
- ▶ Ask questions of the businesses you shop with, and find out their environmental credentials.
- ▶ Buy products with recyclable and minimal packaging.
- ▶ Recycle everything you can, including food waste.

- ▶ Be savvy about your food shopping: make use of your leftovers and freezer, and avoid buying what you don't need so it doesn't go to waste.
- ▶ Keep front gardens for wildlife and not completely paved over for cars. Install rain gardens and other sustainable drainage features in your garden.

## WE NEED THE HOUSING PROVIDERS IN THE BOROUGH TO:

- ▶ Retrofit your housing stock to zero carbon standards.
- ▶ Build new housing stock that is zero carbon standard, uses sustainable materials, and creates sustainable communities.
- ▶ Share best practice and learning around carbon reduction and environmental improvements.
- ▶ Identify opportunities to embed sustainability across your business, including areas such as biodiversity and green spaces, electric vehicle fleet and sustainable procurement.

## WE NEED ENERGY COMPANIES TO:

- ▶ Help people switch easily to the cheapest tariff.
- ▶ Offer smart meters to customers and increase the uptake of them.
- ▶ Promote ways to reduce energy consumption and save money.
- ▶ Invest in new renewable energy supply.

## WE NEED SES WATER TO (TARGETS IN THEIR BUSINESS PLAN):

- ▶ Help people reduce their daily water use to 138 litres by 2025 and 118 litres by 2050.
- ▶ Promote ways to reduce water consumption and save money.
- ▶ Help customers use less water by providing home visits and installing water saving devices.
- ▶ Meter 90% of customers by 2025, with a minimum 10% of these customers on smart meters.
- ▶ Reduce leakage on the water network and explain the action residents need to take when they have a leak.
- ▶ Work with the Water Industry to:
- ▶ Prevent the equivalent of 4 billion plastic bottles ending up as waste by 2030.
- ▶ Achieve net zero carbon emissions for the sector by 2030.
- ▶ Improve rivers through delivery of the Environment Agency's Water Industry National Improvement Programme (WINEP).

## WE NEED WASTE COMPANIES OPERATING IN THE BOROUGH TO:

- ▶ Offer recycling as standard to every business they service.
- ▶ Incentivise the recycling of food, electrical items, batteries, wood, textiles etc. as appropriate to the business.
- ▶ Work with vehicle manufacturers to encourage investment in electric or other low carbon fuel waste fleets.

## WE NEED FINANCIAL INSTITUTIONS AND INSURERS TO:

- ▶ Invest in renewable energy, green technologies and circular business models.
- ▶ Provide green finance options for businesses, public sector organisations and individuals.
- ▶ Offer mortgages, lending options and new financial models of investment to individuals and businesses that support energy efficiency and retrofitting.
- ▶ Support a 'build back better' approach, particularly for flooded properties, to install flood prevention measures that will protect against future flooding.

## WE NEED THE LONDON MAYOR AND TRANSPORT FOR LONDON TO:

- ▶ Accelerate plans for the electrification of the bus fleet to 2030.
- ▶ Extend the tram and London Overground network into Sutton.
- ▶ Invest in and improve the Transport for London Road Network (TLRN) for cycling and walking.
- ▶ Extend the bus network so that every home is within 5 minutes walk of a frequent, reliable and accessible bus service.
- ▶ Strengthen the existing Low Emission Zone standard to clean up polluting business vehicles.
- ▶ Continue to fund group purchasing schemes such as for solar panels, and expand these to include energy retrofit / insulation measures for able-to-pay households.

- ▶ Develop the next iteration of the retrofitting programmes for workplaces, schools and homes that provide funding and innovation on energy efficiency at the scale needed for transformation in London.
- ▶ Continue to fund electric vehicle charge point installation in boroughs and take action on the electrification of the 'GLA family' fleet.
- ▶ Continue to fund waste minimisation communications campaigns to reach Londoners and the installation of water fountains.
- ▶ Expand London Power (which provides renewable and affordable energy to homes) to businesses / commercial clients to enable charities, small businesses and organisations such as the Council to switch.



## WE NEED NATIONAL GOVERNMENT TO:

### Energy efficiency and decarbonisation

- ▶ Fund the retrofitting of the 77,100 properties in the borough (excluding council homes) to a zero carbon standard. We estimate this will cost between £20k and £100k per property, depending on building type and a mature supply chain. This totals between £1.5 bn and £7.71bn.
- ▶ Fund the retrofitting of the 6,600 council housing properties to a zero carbon and fire safe standard by meeting the gap created by accelerating this work beyond planned maintenance and upgrades. We estimate this will cost between £20k-£100k per property, totalling £120m - £600m.
- ▶ Invest in wind, solar and other renewables to decarbonise the National Grid and ensure there is sufficient supply for the demands on electricity.
- ▶ Update national planning policy with stronger requirements on carbon reduction, use of renewables and public transport accessibility. This will help stimulate the markets for low carbon building materials and renewable energy sources.
- ▶ Develop a plan for the decarbonisation of heat, by providing the regulatory and financial framework that supports uptake in solar, community energy and other renewable forms of energy.

- ▶ Bring in tougher minimum energy efficiency standards for buildings (which should increase over time) and provide financial support to homeowners, landlords, housing associations and small businesses to undertake energy efficiency measures.
- ▶ Reaffirm the smart meter rollout programme which is behind schedule.

### Transport

- ▶ Accelerate further to 2030 the ban on new petrol and diesel vehicle sales. This needs to be accompanied by a scrappage scheme for diesel and petrol cars and other incentives to give up a car altogether.
- ▶ Offer financial incentives for businesses to switch to a commercial electric vehicle fleet.
- ▶ Increase funding for Transport for London so that increased funding can be passed to boroughs for walking, cycling and sustainable transport, so that funding levels match our ambition.
- ▶ Continue to fund the installation of electric vehicle charging points.
- ▶ Increase fixed penalty notice penalties for anti-idling and increase funding for local authorities to be able to resource this enforcement.
- ▶ Require businesses and schools to have travel plans and to update them regularly.

### Waste

- ▶ Require manufacturers and businesses to package products in recycled and commonly recyclable packaging, or require the business to offer a free take-back service.

- ▶ Review the Waste Transfer Regulations and identify where they impede on circular economy businesses and initiatives.
- ▶ Ban single use plastics where alternatives are available e.g. single use water bottles and nappies.
- ▶ Support and fund the development and innovation of waste reprocessing facilities that seek to recycle new materials e.g. plastic film to make these businesses nationally scalable so that local authorities can start to offer them in recycling collections.

### Climate change

- ▶ Reduce the requirements on school and nursery catering services to offer meat at least three times a week.
- ▶ Raise public awareness of the reasons why front and back gardens need protecting from being built over, and restrict the sale of artificial turf. Give local authorities new planning enforcement powers on this, with funding to resource enforcement.
- ▶ Require large businesses and organisations including public sector agencies to report annually on their carbon emissions and those of their supply chain.
- ▶ Increase funding for flood risk management schemes and adapt the funding formula to allow increased funding of projects that tackle surface water flooding.



# CLEANER AIR

**Target:** By March 2022, 48% of journeys in Sutton will be made by walking, cycling or public transport, rising to 63% by 2041.

**Target:** By March 2022, 36% of people will be doing 20 minutes of active travel a day, rising to 70% by 2041.

| Action | Timescale                                                                                                                                                                                                                                                                                                          | Lead (others involved in italics)                                                                                                          | Cost and funding                                                                                                        | Project status: draft proposal, final proposal, implementing                                                                                                                                                                                                                                                                                                                                                                                                                                                       | Progress Update |                                                                                                                                                                                                                                                                     |
|--------|--------------------------------------------------------------------------------------------------------------------------------------------------------------------------------------------------------------------------------------------------------------------------------------------------------------------|--------------------------------------------------------------------------------------------------------------------------------------------|-------------------------------------------------------------------------------------------------------------------------|--------------------------------------------------------------------------------------------------------------------------------------------------------------------------------------------------------------------------------------------------------------------------------------------------------------------------------------------------------------------------------------------------------------------------------------------------------------------------------------------------------------------|-----------------|---------------------------------------------------------------------------------------------------------------------------------------------------------------------------------------------------------------------------------------------------------------------|
| 1      | COMPLETE: Publish a new Sustainable Transport Strategy, enabling an increase in walking and cycling across the borough.                                                                                                                                                                                            | Approved by the Environment and Sustainable Transport Committee in October 2021.                                                           | Principal Policy Officer - Strategic Transport<br><br><i>Various others from teams across the Council e.g. Highways</i> | Existing Council budgets, including TfL Local Implementation Plan and Cycleway funding. The Ashden / Friends of the Earth toolkit proposes spend of £50/person/year on walking and cycling. This equates to £10.3m. The Council has historically received around £1.5m each year from TfL towards transport projects and other sources (e.g. Section 106). A significant increase in funding from TfL would be needed and TfL's overall funding situation due to COVID-19 makes this significantly more uncertain. | Implementing    | See action 2 below.                                                                                                                                                                                                                                                 |
| 2      | Implement the Sustainable Transport Strategy 2020 - 2025, enabling an increase in walking, cycling and sustainable travel across the borough.                                                                                                                                                                      | See action plan within the strategy - progress reporting will be undertaken annually to the Environment & Sustainable Transport committee. |                                                                                                                         |                                                                                                                                                                                                                                                                                                                                                                                                                                                                                                                    | Implementing    | Progress is reported annually to the Environment and Sustainable Transport Committee.                                                                                                                                                                               |
| 3      | Lobby for improvements to the frequency, coverage and zero emissions status of bus services in the borough.<br><br>TfL are now proposing for the red bus fleet to be zero emission by 2030. The Council will continue to lobby for earlier adoption in Sutton as changes caused by the Bus Review are implemented. | Ongoing                                                                                                                                    | Principal Policy Officer - Strategic Transport                                                                          | Staff time on lobbying can be met from existing budgets.<br><br>A significant increase in funding from TfL would be needed to achieve these actions.                                                                                                                                                                                                                                                                                                                                                               | Draft proposal  | Currently all buses operating in Sutton meet the Euro VI emissions standard.<br><br>The <a href="#">TfL Bus Action Plan</a> , launched on 11 March 2022, accelerating the date for a zero emission bus fleet to 2030 (see page 8), from the previous 2037 ambition. |

| Action                                                                                                            | Timescale                   | Lead<br>(others involved<br>in italics)                             | Cost and funding                                                                                                                                                                                                                                                                                                                                                                                                                                                                                                                                                                                                                                                                              | Project status:<br>draft proposal,<br>final proposal,<br>implementing              | Progress Update                                                                                                                                                                                                                                                                                                                                                                                                                                    |
|-------------------------------------------------------------------------------------------------------------------|-----------------------------|---------------------------------------------------------------------|-----------------------------------------------------------------------------------------------------------------------------------------------------------------------------------------------------------------------------------------------------------------------------------------------------------------------------------------------------------------------------------------------------------------------------------------------------------------------------------------------------------------------------------------------------------------------------------------------------------------------------------------------------------------------------------------------|------------------------------------------------------------------------------------|----------------------------------------------------------------------------------------------------------------------------------------------------------------------------------------------------------------------------------------------------------------------------------------------------------------------------------------------------------------------------------------------------------------------------------------------------|
| 4 Lobby for improvements in facilities to support walking and cycling on the TfL Road Network.                    | Ongoing                     | Team Leader<br>- Sustainable Transport and Commissioning (Highways) | Regular bids for improvements are made on an annual basis for funding to deliver improvements for walking and cycling. In the current year, £69,000 has been allocated for a new zebra/parallel crossing in North Street, and an additional allocation of £971,000 received to develop schemes in line with the programmes included in a report which went to the Environment and Sustainable Transport Committee in December 2022. £40,000 is in place to continue investigating cycling measures on the Morden to Sutton cycle ways link, and the Beddington North TfL Major Scheme including dedicated cycle lanes along the length of Beddington Lane, is due for completion this winter. | Draft proposals                                                                    | TfL programmes have received funding of £971,000 for transport projects for period 4-12 in the current financial year, and £1,129,000 for 2023/24 with programmes of work as set out in the report which went to the Environment and Sustainable Transport Committee in December 2022.                                                                                                                                                             |
| 5 Lobby for improvements to rail services in the borough including metroisation, meaning a more frequent service. | Ongoing                     | Principal Policy Officer - Strategic Transport                      | TfL's strategic business case for metroisation in South London estimated that the whole scheme will cost £1.6bn. Network Rail and TfL are also looking to progress elements separately.                                                                                                                                                                                                                                                                                                                                                                                                                                                                                                       | Draft proposal                                                                     | The Council has submitted a bid to the Government's Levelling Up Fund for the Belmont Rail Frequency Improvement scheme. The bid is for £15 million to increase train frequency and improve active travel options to serve the London Cancer Hub and Belmont. The wider metroisation proposals, including turnbacks at Wallington and Cheam, are supported by the Council in the new Sustainable Transport Strategy and Local Implementation Plan. |
| 6 Implement a programme of School Streets and Play Streets, working with residents and schools.                   | Launched in autumn 2021/22. | Team Leader<br>- Sustainable Transport and Commissioning (Highways) | School Streets Phase 2 Programme approved at the Environment & Sustainable Transport committee in October 2022. Existing LBS capital and TfL funding being used in year, with Capital Bid for additional works and further TfL funding in 23/24.                                                                                                                                                                                                                                                                                                                                                                                                                                              | Draft proposal. Feasibility/consultation for Phase 2 School Street in development. | A programme of School Streets launched in 2021. Residents can also bid for an event fees and charges grant to support the costs of road closures for events they want to hold e.g. Play Streets.                                                                                                                                                                                                                                                   |



| <b>Action</b>                                                                                                                                                                              | <b>Timescale</b>                         | <b>Lead<br/>(others involved<br/>in italics)</b>                           | <b>Cost and funding</b>                                                                                           | <b>Project status:<br/>draft proposal,<br/>final proposal,<br/>implementing</b> | <b>Progress Update</b>                                                                                                                                                                                                                                     |
|--------------------------------------------------------------------------------------------------------------------------------------------------------------------------------------------|------------------------------------------|----------------------------------------------------------------------------|-------------------------------------------------------------------------------------------------------------------|---------------------------------------------------------------------------------|------------------------------------------------------------------------------------------------------------------------------------------------------------------------------------------------------------------------------------------------------------|
| 7 Undertake 'Neighbourhood Place Shaping' consultation with residents regarding the 'Safer and Healthier Streets' programme, developing and co-designing potential schemes as appropriate. | Ongoing                                  | Team Leader<br>- Sustainable Transport and Commissioning (Highways)        | Lack of TfL funding has delayed progress, and in-year allocation only recently received to allow work to restart. | Draft proposal                                                                  | Two key areas at Worcester Park and Butter Hill have been identified for reconsultation; the results have been received and processed. Proposals for how to progress were considered at the December 2022 Environment and Sustainable Transport committee. |
| 8 Deliver and monitor the Parking Strategy to identify any displacement activities and reduction in traffic.                                                                               | Ongoing                                  | Principal Engineer<br>- Sustainable Transport and Commissioning (Highways) | Met from existing budgets.                                                                                        | Implementing                                                                    | In October 2022, the Council approved additional funds to proceed with further phases of the Parking Strategy. This will be an 18-month programme of work.                                                                                                 |
| 9 Continue to offer support to businesses and schools in travel planning.                                                                                                                  | Ongoing with progress reported annually. | Sustainable Transport Officer                                              | Met from existing resources.                                                                                      | Implementing - schools                                                          | School engagement taking place through STARS and School Streets. No business engagement currently taking place due to lack of funding.                                                                                                                     |

### **IMPROVING COUNCIL STAFF TRAVEL:**

|                                                                                                                                                                                                                                                                                                                                                                                                           |         |                                                        |                                                         |                |                                              |
|-----------------------------------------------------------------------------------------------------------------------------------------------------------------------------------------------------------------------------------------------------------------------------------------------------------------------------------------------------------------------------------------------------------|---------|--------------------------------------------------------|---------------------------------------------------------|----------------|----------------------------------------------|
| 10 Produce a new travel plan for council staff travel to and at work, including HR policies, travel allowances, the use of personal vehicles, pool and electric bikes, car clubs and public transport. Encourage partners to do the same.<br><br>As part of this work, investigate the feasibility of a salary sacrifice scheme to support staff take up of electric vehicles (or other renewable fuels). | 2022/23 | Assistant Director of Environment and Community Safety | New policy production can be met from existing budgets. | Draft proposal | Work to commence in the latter part of 2023. |
|-----------------------------------------------------------------------------------------------------------------------------------------------------------------------------------------------------------------------------------------------------------------------------------------------------------------------------------------------------------------------------------------------------------|---------|--------------------------------------------------------|---------------------------------------------------------|----------------|----------------------------------------------|

**Target:** By December 2021, 24% of Sutton’s population will be within 400m of the strategic cycle network, rising to 37% by 2041.

| Action                                   | Timescale                                                                                                                                                                                            | Lead<br>(others involved<br>in italics)              | Cost and funding                                                       | Project status:<br>draft proposal,<br>final proposal,<br>implementing                                                                                                                                                                                       | Progress Update                               |                                                                                                                                |
|------------------------------------------|------------------------------------------------------------------------------------------------------------------------------------------------------------------------------------------------------|------------------------------------------------------|------------------------------------------------------------------------|-------------------------------------------------------------------------------------------------------------------------------------------------------------------------------------------------------------------------------------------------------------|-----------------------------------------------|--------------------------------------------------------------------------------------------------------------------------------|
| <b>IMPROVING CYCLING INFRASTRUCTURE:</b> |                                                                                                                                                                                                      |                                                      |                                                                        |                                                                                                                                                                                                                                                             |                                               |                                                                                                                                |
| 11                                       | Secure funding for cycle network improvements e.g. new quiet routes, segregated cycle paths, cycle parking etc.                                                                                      | Ongoing                                              | Senior Sustainable Transport Officer                                   | TfL funds cycleways. The Council is supporting school cycle parking. The Council can use Section 106 (S106) and Community Infrastructure Levy (CIL) funding secured through planning for new initiatives.                                                   | Implementing - dockless e-bikes.              | A dockless e-bike scheme launched in September 2022.                                                                           |
| 12                                       | COMPLETE: Continue to work with dockless e-bike suppliers and introduce a new e-bike hire service in the borough.                                                                                    | Ongoing                                              | Senior Sustainable Transport Officer                                   | Met from existing budgets.                                                                                                                                                                                                                                  | Implementing                                  | Launched in September 2022 with a promotional event in October 2022.                                                           |
| 13                                       | Encourage e-bike use by working with bike shops to promote offers on e-bikes, promote to residents, and encourage workplaces to introduce electric cargo bikes as part of services / goods delivery. | Launched autumn 2022<br>Implementation -<br>Ongoing. | Senior Sustainable Transport Officer                                   | Electric cargo bikes cost over £4,500. There is currently no capacity to promote E- Bike purchase.                                                                                                                                                          | Implementing - promotion of e-bike hire only. | E-bikes are promoted via the dockless e-bike scheme above. There is an e-bike for staff use at Sutton Council’s Civic Offices. |
| <b>CYCLE SKILLS AND TRAINING:</b>        |                                                                                                                                                                                                      |                                                      |                                                                        |                                                                                                                                                                                                                                                             |                                               |                                                                                                                                |
| 14                                       | Provide cycle maintenance and cycle safety training and workshops.                                                                                                                                   | Ongoing                                              | Senior Sustainable Transport Officer and Sustainable Transport Officer | Funded through the Local Implementation Plan allocation from Transport for London with associated targets. Funding for the remainder of 2022/23 is now agreed, although there is a shortfall which is planned be funded from the Local Implementation Plan. | Implementing                                  | During the period April - September 2022, 293 children and 33 adults received cycle training.                                  |

**Target:** Implement the Air Quality Action Plan, meeting the national air quality standards for nitrogen dioxide as soon as possible. Continue to take action to reduce levels of particulate matter.

The actions for this target are monitored via the [Air Quality Action Plan 2019 - 2023](#) and the [annual progress reports](#) published on the Council’s website.

# A GREENER BOROUGH

**Target:** No overall reduction in the amount of green space in the borough.

**Target:** By 2050, at least half of Sutton’s land area will still be green space.

| Action                                                                                                                                                                                                                                                                                                                                                                                                                                                                                                                                                                                                                                                                                                                                                                                                                                                                                         | Timescale | Lead<br>(others involved<br>in italics)              | Cost and funding                                                                                                                                                                                                    | Project status:<br>draft proposal,<br>final proposal,<br>implementing | Progress Update                                                                               |
|------------------------------------------------------------------------------------------------------------------------------------------------------------------------------------------------------------------------------------------------------------------------------------------------------------------------------------------------------------------------------------------------------------------------------------------------------------------------------------------------------------------------------------------------------------------------------------------------------------------------------------------------------------------------------------------------------------------------------------------------------------------------------------------------------------------------------------------------------------------------------------------------|-----------|------------------------------------------------------|---------------------------------------------------------------------------------------------------------------------------------------------------------------------------------------------------------------------|-----------------------------------------------------------------------|-----------------------------------------------------------------------------------------------|
| <b>GREEN SPACE PROVISION:</b>                                                                                                                                                                                                                                                                                                                                                                                                                                                                                                                                                                                                                                                                                                                                                                                                                                                                  |           |                                                      |                                                                                                                                                                                                                     |                                                                       |                                                                                               |
| <p>1 Maximise opportunities to exceed Local Plan requirements for increasing overall green space coverage and improving the Green Space Factor score by including green space, habitats, landscaping, planting, trees and sustainable drainage retrofit etc.:</p> <ul style="list-style-type: none"> <li>▶ in private developments, through the planning process;</li> <li>▶ as part of major investments e.g. Sutton Town Centre, estate regeneration projects;</li> <li>▶ in estate renewal projects and council housing schemes;</li> <li>▶ in transport / Local Implementation Plan schemes;</li> <li>▶ in relevant Business Improvement District projects;</li> <li>▶ in flooding schemes;</li> <li>▶ in other council-led schemes e.g. schools; and</li> <li>▶ in the Public Realm Design Guide.</li> </ul> <p>Report through the <a href="#">Authority Monitoring Report (AMR)</a>.</p> | Ongoing   | Senior Planner<br><i>Senior Biodiversity Officer</i> | Greening and sustainable drainage measures should be included as part of the cost of the development / scheme. In some situations, public realm funding could be used for schemes that residents want to implement. | Implementing                                                          | Progress is reported annually in Sutton’s <a href="#">Authority Monitoring Report (AMR)</a> . |

| Action | Timescale                                                                                                          | Lead (others involved in italics) | Cost and funding              | Project status: draft proposal, final proposal, implementing                                                                                                                                                                                                                                                                          | Progress Update |                                                                                                                                                                                              |
|--------|--------------------------------------------------------------------------------------------------------------------|-----------------------------------|-------------------------------|---------------------------------------------------------------------------------------------------------------------------------------------------------------------------------------------------------------------------------------------------------------------------------------------------------------------------------------|-----------------|----------------------------------------------------------------------------------------------------------------------------------------------------------------------------------------------|
| 2      | Using Local Plan data, work with local people to create green spaces and plant trees where there is a deficit.     | Ongoing                           | Sustainability Manager        | Dependent upon project size, however, external funding is expected to be required.                                                                                                                                                                                                                                                    | Implementing    | Some funding has been secured to support this work in Wallington and the Wrythe area of the borough. Further funding will be required to maintain sites and continue implementing elsewhere. |
| 3      | Support communities' creation of pocket parks, community gardens, food growing, and the 'meanwhile use' of spaces. | Ongoing                           | Head of Parks and Open Spaces | External funding is needed to support delivery of this action. Community groups can apply for public realm funding through Local Committees, or grants such as the Greener City Fund (GLA). Ongoing costs for maintenance need to be considered at the point of application together with who is responsible for ongoing maintenance. | Draft proposal  | See above.                                                                                                                                                                                   |

## MANAGEMENT OF PARKS AND OPEN SPACES:

|   |                                                                                                                                                                                   |                                             |                                                                                                              |                                                                                                                                                    |              |                                                                                                                         |
|---|-----------------------------------------------------------------------------------------------------------------------------------------------------------------------------------|---------------------------------------------|--------------------------------------------------------------------------------------------------------------|----------------------------------------------------------------------------------------------------------------------------------------------------|--------------|-------------------------------------------------------------------------------------------------------------------------|
| 4 | Implement the Parks and Open Spaces Strategy. This is a major programme of business-as-usual activities, re-engineering processes and methods of parks maintenance, and projects. | 5-year programme of works from 2020 - 2025. | Head of Parks and Open Spaces<br><br><i>Various other teams and organisations supporting implementation.</i> | 5-year programme of works, some of which is fully funded, some is partly funded and some will depend on successfully bidding for external funding. | Implementing | Work is in progress and a separate action plan update is produced annually.                                             |
| 5 | Prepare and review parks management plans, starting with the major parks. Objective is to produce two plans per year.                                                             | Ongoing                                     | Head of Parks and Open Spaces<br><br><i>Various including the Tree Officers and Biodiversity Officers.</i>   | This work is funded from existing budgets.                                                                                                         | Implementing | 11 plans have already been completed covering twenty two parks sites. Sites covered include all seven Green Flag parks. |

**Target:** Plant 2,000 trees every year (community, council and developer-led schemes all count).

| Action                | Timescale                                                                                                                       | Lead<br>(others involved<br>in italics)              | Cost and funding                                          | Project status:<br>draft proposal,<br>final proposal,<br>implementing                                                                                                                                    | Progress Update |                                                                                                                                                                                                                                                                      |
|-----------------------|---------------------------------------------------------------------------------------------------------------------------------|------------------------------------------------------|-----------------------------------------------------------|----------------------------------------------------------------------------------------------------------------------------------------------------------------------------------------------------------|-----------------|----------------------------------------------------------------------------------------------------------------------------------------------------------------------------------------------------------------------------------------------------------------------|
| <b>TREE PLANTING:</b> |                                                                                                                                 |                                                      |                                                           |                                                                                                                                                                                                          |                 |                                                                                                                                                                                                                                                                      |
| 6                     | Plant 2,000 trees each year.                                                                                                    | Annual                                               | Senior<br>Arboriculturalist                               | Tree planting is dependent on the allocation of funding from Local Committees, other council budgets and external funding bids as the parks team does not have a budget allocation for purchasing trees. | Implementing    | In total 3,978 trees were planted in 2021/22. This was funded by the Urban Tree Challenge, Treescapes Fund, Public Realm funding, sponsorship, planning money and council capital funding.                                                                           |
| 7                     | Support community groups who want to plant trees - help with bidding, give advice and organise planting events.                 | Annually - reporting on the number of trees planted. | Senior<br>Arboriculturalist                               | Providing support is met from existing budgets. Free trees are offered throughout the year by various organisations.                                                                                     | Implementing    | Tree planting in 2021/22 was carried out with various friends groups including Rosehill Park Friends, community groups at Corrigan Avenue Recreation Ground, Lenham Road Community Garden, Queen Mary's woodland, Belmont Pastures, Ecology centre and Mellows Park. |
| 8                     | Maintain a list of trees good for biodiversity and a range of locations, to guide developers and residents when planting trees. | Ongoing                                              | Sustainability<br>Manager and Senior<br>Arboriculturalist | Met from existing budgets.                                                                                                                                                                               | Implementing    | List is published on the Council's website.                                                                                                                                                                                                                          |

**Target:** Advise and monitor Viridor’s delivery of the Beddington Farmlands landfill site as one of the largest nature reserves in London by 2023.

| Action                                                                                                        | Timescale                 | Lead<br>(others involved<br>in italics)                                                                                                          | Cost and funding                                                                                       | Project status:<br>draft proposal,<br>final proposal,<br>implementing | Progress Update                                                                                                                                                                                                                                                                                                                                                                                                                                                                                                                                         |
|---------------------------------------------------------------------------------------------------------------|---------------------------|--------------------------------------------------------------------------------------------------------------------------------------------------|--------------------------------------------------------------------------------------------------------|-----------------------------------------------------------------------|---------------------------------------------------------------------------------------------------------------------------------------------------------------------------------------------------------------------------------------------------------------------------------------------------------------------------------------------------------------------------------------------------------------------------------------------------------------------------------------------------------------------------------------------------------|
| <b>TREES, PARKS AND BIODIVERSITY:</b>                                                                         |                           |                                                                                                                                                  |                                                                                                        |                                                                       |                                                                                                                                                                                                                                                                                                                                                                                                                                                                                                                                                         |
| 9 Monitor and advise on the creation of new wildlife habitat through the restoration of Beddington Farmlands. | Ongoing to December 2023. | Senior Biodiversity Officer<br><i>Reserve Warden</i><br><br><i>Planning</i><br><i>Enforcement</i><br><br><i>Development</i><br><i>Management</i> | Viridor is funding the restoration as part of its planning condition for the Energy Recovery Facility. | Implementing                                                          | This work is ongoing. Work by Viridor in 2021/22 included the creation of Phase 3 wet grassland and a start in long-term soil preparation of the acid grassland area was started, with the view to creating a nursery sward in 2022. Pre-application advice on the acid grassland was sought from LBS. Indicative footpaths within the site have been marked out. Although there has been some good progress, wider site management is often lacking and the likelihood of the delivery of all habitats by the end of 2023 is very much in the balance. |

**Focus Area:** Maintain and enhance the biodiversity value of the borough.

| Action                                                                                                  | Timescale    | Lead<br>(others involved<br>in italics)                                                                                                                                                    | Cost and funding                                                                                                                                                                                | Project status:<br>draft proposal,<br>final proposal,<br>implementing | Progress Update                                                                                                                                                                                                                                                                                                                                                                                                                                                                                                    |
|---------------------------------------------------------------------------------------------------------|--------------|--------------------------------------------------------------------------------------------------------------------------------------------------------------------------------------------|-------------------------------------------------------------------------------------------------------------------------------------------------------------------------------------------------|-----------------------------------------------------------------------|--------------------------------------------------------------------------------------------------------------------------------------------------------------------------------------------------------------------------------------------------------------------------------------------------------------------------------------------------------------------------------------------------------------------------------------------------------------------------------------------------------------------|
| 10 Deliver the Biodiversity Strategy.                                                                   | 2020 - 2025  | Senior Biodiversity Officer<br><i>Biodiversity Net Gain Officer</i><br><i>Biodiversity Education Officer</i><br><i>Biodiversity Field Officer</i><br><i>Warden of Beddington Farmlands</i> | Some projects can access agri-environment funding but others (e.g. river restoration) require funding applications. Funding may be available through the Biodiversity Net Gain planning policy. | Implementing                                                          | Work is ongoing. Butterfly banks have been installed through the Brilliant Butterflies project and funding has been secured from the ReWild London Fund to create 8-9 more.<br><br>Various events were held throughout the year such as bat walks, meadow walks and open days at nature reserves.<br><br>An application was made to TfL funding to deliver phase one of the 'Greening Sutton Town Centre' project, through improving green infrastructure within the high street and funding was granted in 22/23. |
| 11 Provide biodiversity education to 5,000 people each year (3,500 school-aged children).               | Ongoing      | Biodiversity Education Officer                                                                                                                                                             | These events are self-financing.                                                                                                                                                                | Implementing                                                          | During 2021/22, 6,825 people, of which 3,948 were school-aged children, were engaged in biodiversity education and activities.                                                                                                                                                                                                                                                                                                                                                                                     |
| 12 Promote gardening for wildlife and biodiversity as part of the annual 'Sutton in Bloom' competition. | Each summer. | Senior Biodiversity Officer<br><i>Biodiversity Field Officer</i><br><i>Biodiversity Net Gain Officer</i>                                                                                   | Met from existing budgets.                                                                                                                                                                      | Draft proposal                                                        | While the judging criteria encourages biodiversity improvements, a formal category is still required.                                                                                                                                                                                                                                                                                                                                                                                                              |

| Action                                                                                                                                                    | Timescale                            | Lead<br>(others involved<br>in italics)                                                                                                           | Cost and funding                                                                                                                                        | Project status:<br>draft proposal,<br>final proposal,<br>implementing | Progress Update                                                                                                                                                                                                                                            |
|-----------------------------------------------------------------------------------------------------------------------------------------------------------|--------------------------------------|---------------------------------------------------------------------------------------------------------------------------------------------------|---------------------------------------------------------------------------------------------------------------------------------------------------------|-----------------------------------------------------------------------|------------------------------------------------------------------------------------------------------------------------------------------------------------------------------------------------------------------------------------------------------------|
| 13 Promote and enable environmental volunteering opportunities.<br><br>850 volunteer days are donated by Sutton Nature Conservation volunteers each year. | Ongoing - annual progress reporting. | Senior Biodiversity Officer                                                                                                                       | Met from existing budgets.<br><br>There are various organisations in Sutton that offer environmental volunteering as well as council-led opportunities. | Implementing                                                          | Volunteers with the biodiversity team donated 829.79 days, at a total value of £45,639.5 in 2021/22.<br><br>Park volunteering which includes Sutton Tree Wardens and gardening volunteers donated 334 hours, an in-kind contribution of £3,600 in 2021/22. |
| <b>PLANNING:</b>                                                                                                                                          |                                      |                                                                                                                                                   |                                                                                                                                                         |                                                                       |                                                                                                                                                                                                                                                            |
| 14 Prepare for mandatory implementation and monitoring of Biodiversity Net Gain in 2023.                                                                  | 2023                                 | Senior Biodiversity Officer<br><br><i>Biodiversity Net Gain Officer</i><br><br><i>Strategic Planning</i><br><br><i>Development Management</i>     | Met from existing budgets.                                                                                                                              | Implementing                                                          | Biodiversity Net Gain Officer now in post to assist with this work. The new requirements will be incorporated into the Local Plan at its next review.                                                                                                      |
| 15 NEW: Creation and implementation of a Local Nature Recovery Plan in 2023.                                                                              | 2023                                 | Senior Biodiversity Officer<br><br><i>Biodiversity Net Gain Officer</i><br><br><i>Officers from Strategic Planning and Development Management</i> | Met from existing budgets.                                                                                                                              | Implementing                                                          | N/A - new action.                                                                                                                                                                                                                                          |



# ACHIEVING NET ZERO CARBON

**Target:** The Council will achieve net zero carbon emissions across its own estate and operations.

| Action                       | Timescale                                                                                                                                                                                                                                                                              | Lead<br>(others involved<br>in italics) | Cost and funding                                 | Project status:<br>draft proposal,<br>final proposal,<br>implementing                         | Progress Update                       |                                                                                                                                                                                                            |
|------------------------------|----------------------------------------------------------------------------------------------------------------------------------------------------------------------------------------------------------------------------------------------------------------------------------------|-----------------------------------------|--------------------------------------------------|-----------------------------------------------------------------------------------------------|---------------------------------------|------------------------------------------------------------------------------------------------------------------------------------------------------------------------------------------------------------|
| <b>PATHWAY TO NET ZERO:</b>  |                                                                                                                                                                                                                                                                                        |                                         |                                                  |                                                                                               |                                       |                                                                                                                                                                                                            |
| 1                            | NEW: Develop a pathway for net zero carbon emissions across the Council's estate and operations.                                                                                                                                                                                       | March 2023.                             | Head of Climate Action and Sustainability        | £40,000<br>(combined with the borough-wide pathway)                                           | Implementing                          | Consultants procured in autumn 2022 to undertake this work. Pathways are expected to be produced by March 2023. The outcome of this will be incorporated into the Climate Emergency Response Plan in 2023. |
| <b>THE COUNCIL'S ESTATE:</b> |                                                                                                                                                                                                                                                                                        |                                         |                                                  |                                                                                               |                                       |                                                                                                                                                                                                            |
| 2                            | As appropriate opportunities come forward, replace council buildings with zero carbon or BREEAM Outstanding buildings, and identify retrofit measures for the remainder.                                                                                                               | As appropriate.                         | Head of Programme and Project Management, Assets | Costs not known at present. A business case would need to be developed.                       | Implementing - where funding permits. | Two PassivHaus schools have been built in the borough as additional funds were secured.                                                                                                                    |
| 3                            | Undertake an investment grade audit of the Council's commercial building stock and physical assets in the corporate portfolio to identify the opportunities for retrofit to zero carbon and the likely costs. Include Sutton Housing Partnership residential properties in this audit. | 2022 - 2024                             | Energy Manager                                   | Cost of study determined by tender, may be possible to demonstrate 'invest to save' approach. | Implementing                          | This work is being delivered via a rolling programme of audits through until 2024. The outcomes will inform funding bids for decarbonisation projects.                                                     |

| <b>Action</b> | <b>Timescale</b>                                                                                                                                                                                                                                                                      | <b>Lead<br/>(others involved<br/>in italics)</b> | <b>Cost and funding</b>                                                                                   | <b>Project status:<br/>draft proposal,<br/>final proposal,<br/>implementing</b> | <b>Progress Update</b> |                                                                                                                   |
|---------------|---------------------------------------------------------------------------------------------------------------------------------------------------------------------------------------------------------------------------------------------------------------------------------------|--------------------------------------------------|-----------------------------------------------------------------------------------------------------------|---------------------------------------------------------------------------------|------------------------|-------------------------------------------------------------------------------------------------------------------|
| 4             | Produce a technical construction guide setting out the environmental construction standards we are aiming for on council-led schemes and council-owned property, encompassing major works, general maintenance and repairs. Work with our contractors to learn from their experience. | 2023/24                                          | Head of FM Client, Head of Programme and Project Management and Head of Climate Action and Sustainability | Additional funding required to commission this.                                 |                        | This work has been superseded by the Pathways to Net Zero work, the outcome of which will be used to inform this. |
| 5             | Highlight to commercial tenants opportunities to access funding for retrofit, boiler upgrades, energy efficiency measures etc. from the government, Mayor of London etc.                                                                                                              | Ongoing                                          | Head of Asset Management                                                                                  | Promotion of scheme. Funding met from existing budgets.                         | Implementing           | Information has been provided to tenants such as the Cryer Arts Theatre.                                          |

## **COUNCIL FLEET:**

|   |                                                                                                                                                                                                                                                                                                                                               |                                                                            |                                    |                                                                             |                |                                                                                                                                                                                                                                                                                        |
|---|-----------------------------------------------------------------------------------------------------------------------------------------------------------------------------------------------------------------------------------------------------------------------------------------------------------------------------------------------|----------------------------------------------------------------------------|------------------------------------|-----------------------------------------------------------------------------|----------------|----------------------------------------------------------------------------------------------------------------------------------------------------------------------------------------------------------------------------------------------------------------------------------------|
| 6 | At the end of the current contract, switch as many of the Council's small fleet vehicles as possible to electric and encourage partners to do the same.                                                                                                                                                                                       | 2024/25                                                                    | Technical Services Manager         | Cost to be determined by procurement activity.                              | Draft proposal | This is dependent upon procurement and the availability of electric vehicles; as well as the completion of infrastructure projects.                                                                                                                                                    |
| 7 | Understand the feasibility and costs of installing the electric charging infrastructure needed at the Council's Civic Offices to enable Mitie to switch to electric vans and to support the Council's switch at the end of the contract. On-street charging points delivered for residents and businesses are also important to support this. | Work continues to explore other options with UK Power Networks in 2022/23. | Energy Manager / Head of FM Client | Additional electricity supply is required meaning costs are circa £270,000. | Draft proposal | Initial feasibility work highlighted issues around viability. Work was delayed due to COVID-19 testing centre at the site.<br><br>Survey and utility searches of the Council's Civic Offices site undertaken. New quote obtained from supplier with works due to take place next year. |

| Action | Timescale                                                                                                                                      | Lead (others involved in italics)      | Cost and funding           | Project status: draft proposal, final proposal, implementing | Progress Update |                                                                                                                                                                                     |
|--------|------------------------------------------------------------------------------------------------------------------------------------------------|----------------------------------------|----------------------------|--------------------------------------------------------------|-----------------|-------------------------------------------------------------------------------------------------------------------------------------------------------------------------------------|
| 8      | Work with the existing provider to switch the Mayor's vehicles to electric where possible and include in the specification when next procured. | During next recommissioning (2022/23). | Committee Services Manager | Costs identified through tender process; may be an uplift.   | Draft proposal  | Procurement of a new contract to commence before the end of 2022. However, its viability will depend on council infrastructure to support electric vehicles (e.g. charging points). |

### STREET LIGHTING AND ELECTRIC VEHICLE CHARGING:

|    |                                                                                                                                                                                                                                                                                 |                                                                                                                                                                                                           |                                                                               |                                                                                                                                                      |                |                                                                                                                                                                                                                                   |
|----|---------------------------------------------------------------------------------------------------------------------------------------------------------------------------------------------------------------------------------------------------------------------------------|-----------------------------------------------------------------------------------------------------------------------------------------------------------------------------------------------------------|-------------------------------------------------------------------------------|------------------------------------------------------------------------------------------------------------------------------------------------------|----------------|-----------------------------------------------------------------------------------------------------------------------------------------------------------------------------------------------------------------------------------|
| 9  | Complete the street lamp column (concrete replacement) and LED lighting roll out by 2027. Around 54% of the stock has been converted to date.<br><br>Replacing concrete street lamp column stock will allow implementation of future EV charging points on street lamp columns. | Ongoing until 2027.                                                                                                                                                                                       | Design and Delivery Manager (Highways) and Principal Engineer Street Lighting | Currently funded on an annual basis from council capital budgets.<br><br>Delivery of both 100% LED and lamp columns will require additional funding. | Final Proposal | Capital Bid developed to request funding from 2023/24 onwards to accelerate the programme.                                                                                                                                        |
| 10 | NEW: Work with other local authorities and industry experts to identify opportunities to reduce the carbon intensity of road resurfacing materials.                                                                                                                             | As opportunities and technology allow.                                                                                                                                                                    | Design and Delivery Manager                                                   | Sutton Council - Highways & Transport.                                                                                                               | Implementing   | Two sections of highway were resurfaced with recycled materials last financial year.                                                                                                                                              |
| 11 | Build upon previous successes, securing funding to install electric vehicle charging points on residential roads and at key places across the borough where this supports a switch away from more polluting vehicles, with an aim to install 100 points a year.                 | As opportunities and technology allow.<br><br>For lamp column charging specifically, this will be aligned with the lamp column replacement programme where unsuitable lamp columns are currently located. | Project Officer: EV                                                           | Government and TfL funded programme of electric vehicle charging points.                                                                             | Implementing   | 115 lamp column charging points were delivered in 2021 - 2022.<br><br>For lamp column charging specifically, this will be aligned with the lamp column replacement programme where unsuitable lamp columns are currently located. |

| Action                                               | Timescale                                                                                                                                                                                                                                                                                 | Lead<br>(others involved<br>in italics)                             | Cost and funding                                                                                                          | Project status:<br>draft proposal,<br>final proposal,<br>implementing                             | Progress Update |                                                                                                                                                                                                                                                                     |
|------------------------------------------------------|-------------------------------------------------------------------------------------------------------------------------------------------------------------------------------------------------------------------------------------------------------------------------------------------|---------------------------------------------------------------------|---------------------------------------------------------------------------------------------------------------------------|---------------------------------------------------------------------------------------------------|-----------------|---------------------------------------------------------------------------------------------------------------------------------------------------------------------------------------------------------------------------------------------------------------------|
| <b>COUNCIL HOUSING - SUTTON HOUSING PARTNERSHIP:</b> |                                                                                                                                                                                                                                                                                           |                                                                     |                                                                                                                           |                                                                                                   |                 |                                                                                                                                                                                                                                                                     |
| 12                                                   | Develop plans for low-carbon alternatives to individual gas boilers in new and existing homes.                                                                                                                                                                                            | 2020 - 2022                                                         | Director of Asset Investment and Sustainability (Sutton Housing Partnership)                                              | Funded through the Housing Revenue Account (HRA).                                                 | Proposal        | Approach to be informed by retrofit pilots. Scope for hydrogen-ready boiler pilot being explored. Significant driver would be additional costs in the absence of a national hydrogen infrastructure strategy.                                                       |
| 13                                                   | Improve the SAP (Standard Assessment Procedure) rating of the housing stock by delivering energy efficiency improvements planned as part of the Housing Revenue Account (HRA) capital programme. These include major repairs, improvements to council stock and redevelopment of estates. | The current HRA Business Plan covers the period 2020/21 to 2049/50. | Director of Asset Investment and Sustainability (Sutton Housing Partnership) / Housing Strategy and Commissioning Manager | Projected expenditure is set out in the HRA Business Plan.                                        | Implementing    | To be incorporated into external programmes from 23/24.                                                                                                                                                                                                             |
| 14                                                   | COMPLETED: Retrofit 5 council properties as part of the Energiesprong retrofit pilot.                                                                                                                                                                                                     | On-site works scheduled to complete by August 2021.                 | Retrofit Programme Manager (Sutton Housing Partnership)                                                                   | £8m in total. £4.3m from the Housing Revenue Account; remaining funding from GLA, BEIS and ECO3i. | Completed       | 5 pilots were completed.                                                                                                                                                                                                                                            |
| 15                                                   | Retrofit a further 75 council properties as part of the Energiesprong project.                                                                                                                                                                                                            | June 2022.                                                          | Retrofit Programme Manager (Sutton Housing Partnership)                                                                   | Ashden / Friends of the Earth toolkit suggests a carbon reduction of 275 tonnes CO <sub>2</sub> . | Implementing    | Programme had to be significantly reduced.<br><br>5 additional properties have been completed. 13 properties are due to be retrofitted from December 2022. Significant delays have occurred due to planning approval and technical complexity with design elements. |

| Action                                                                                                                                                                            | Timescale                                | Lead<br>(others involved<br>in italics)                 | Cost and funding                                                                                                                                                                                                      | Project status:<br>draft proposal,<br>final proposal,<br>implementing | Progress Update                                                                                                                                                                                                                                                                                                   |
|-----------------------------------------------------------------------------------------------------------------------------------------------------------------------------------|------------------------------------------|---------------------------------------------------------|-----------------------------------------------------------------------------------------------------------------------------------------------------------------------------------------------------------------------|-----------------------------------------------------------------------|-------------------------------------------------------------------------------------------------------------------------------------------------------------------------------------------------------------------------------------------------------------------------------------------------------------------|
| 16 Assess the feasibility for retrofit of the next 1,800 council properties already identified as potentially suitable and develop a business case.                               | 2022/23                                  | Retrofit Programme Manager (Sutton Housing Partnership) | Between £20k and £100k per property, so an estimated £130m - £650m. This will require funding from the government. Ashden / Friends of the Earth toolkit estimates this could save 17,875 tonnes of CO <sub>2</sub> . | Implementing                                                          | Social Housing Decarbonisation Fund Wave 2.1 bid to include potential 11 properties for retrofit, subject to additional external funding being identified.<br><br>HRA Business Plan (2023/28) includes some budgetary provision for energy efficiency measures, with retrofit investment ramping up from 2027/28. |
| 17 Develop plans to retrofit the remaining council properties to zero carbon standard (6,600 properties in total) through feasibility studies and development of a business case. | 2020 - 2030, approx. 600 units per year. | Retrofit Programme Manager (Sutton Housing Partnership) | Between £20k and £100k per property, so an estimated £130m - £650m. This will require funding from the government. Ashden / Friends of the Earth toolkit estimates this could save 17,875 tonnes of CO <sub>2</sub> . | Draft proposal in progress                                            | Feasibility studies and business case to be considered as part of Sustainability Strategy identified in the HRA Business Plan as a deliverable for April 2023.<br><br>Portfolio (formerly CROHM) licence purchased to assist with necessary modelling.                                                            |

### NEW-BUILD COUNCIL HOUSING AND ESTATE REGENERATION:

|                                                                                                                                                                               |         |                                          |                                                                                                                                                                                                                  |              |                                                                                                                                                                                                                   |
|-------------------------------------------------------------------------------------------------------------------------------------------------------------------------------|---------|------------------------------------------|------------------------------------------------------------------------------------------------------------------------------------------------------------------------------------------------------------------|--------------|-------------------------------------------------------------------------------------------------------------------------------------------------------------------------------------------------------------------|
| 18 Seek to secure the budgets to enable all new-build council homes and estate regeneration projects led by the Council to be built or retrofitted to a zero carbon standard. | Ongoing | Head of Housing Enabling and Development | Ashden / Friends of the Earth toolkit estimates an increased cost of 7%. This will require changes to the allocation of government funding for new build housing for local authorities and housing associations. | Implementing | Planning permission has been granted for the Council's first new build zero carbon PassivHaus social housing development. This will be used to compare the cost of building to net zero versus carbon offsetting. |
|-------------------------------------------------------------------------------------------------------------------------------------------------------------------------------|---------|------------------------------------------|------------------------------------------------------------------------------------------------------------------------------------------------------------------------------------------------------------------|--------------|-------------------------------------------------------------------------------------------------------------------------------------------------------------------------------------------------------------------|

| Action                                     | Timescale                                                                                                                                                                                                                                                                          | Lead<br>(others involved<br>in italics)                                                                                                                      | Cost and funding                          | Project status:<br>draft proposal,<br>final proposal,<br>implementing                                                                                             | Progress Update |                                                                                                                                                                                |
|--------------------------------------------|------------------------------------------------------------------------------------------------------------------------------------------------------------------------------------------------------------------------------------------------------------------------------------|--------------------------------------------------------------------------------------------------------------------------------------------------------------|-------------------------------------------|-------------------------------------------------------------------------------------------------------------------------------------------------------------------|-----------------|--------------------------------------------------------------------------------------------------------------------------------------------------------------------------------|
| <b>PLANNING:</b>                           |                                                                                                                                                                                                                                                                                    |                                                                                                                                                              |                                           |                                                                                                                                                                   |                 |                                                                                                                                                                                |
| 19                                         | Ensure that all residential developments achieve 'zero carbon' standards (Local Plan Policy 31) or collect carbon offset payments.                                                                                                                                                 | Ongoing - implemented via the planning application process.                                                                                                  | Senior Planner (monitoring)               | Zero carbon measures should be included in the cost of the development/scheme.                                                                                    | Implementing    | Progress is reported annually in Sutton's <a href="#">Authority Monitoring Report (AMR)</a> .                                                                                  |
| 20                                         | Develop a pipeline of suitable energy efficiency, renewable energy and fuel poverty projects that can be implemented using the carbon offset fund.                                                                                                                                 | 2023                                                                                                                                                         | Sustainability Manager and Senior Planner | Feasibility studies will require funding. May be possible to demonstrate return on investment. Carbon offset funds can be used to deliver carbon saving projects. | Draft proposal  | Money is being collected from the carbon offset fund and to date has been used for LED lighting improvements.                                                                  |
| 21                                         | As part of the Local Plan review, strengthen policies to embed the commitments of the Environment Strategy and Climate Emergency declaration to enable delivery of net zero and other environmental policies (as permitted by government).                                         | 2023                                                                                                                                                         | Strategic Planning Manager                | Additional funding required for the updating of the Local Plan.                                                                                                   | Draft proposal  | Local Plan review is underway. Sutton has joined a consortium of London Boroughs in preparing a joint study on how to achieve zero carbon standards through planning policies. |
| <b>COUNCIL POLICY AND DECISION MAKING:</b> |                                                                                                                                                                                                                                                                                    |                                                                                                                                                              |                                           |                                                                                                                                                                   |                 |                                                                                                                                                                                |
| 22                                         | Review existing policies for potential conflicts with zero carbon and sustainability commitments, and identify options to address this.                                                                                                                                            | As and when potential conflicts are identified.                                                                                                              | Head of Climate Action and Sustainability | Undertaking this on an ad hoc basis means this can be met from existing resources. A wholesale review is not possible without additional resources.               | Implementing    | The current focus is on enhancing the Local Plan.                                                                                                                              |
| 23                                         | Use the pension fund's policy on Responsible Investment and its membership of local, national and international investor forums to drive company improvements on sustainability and governance, and support the transition to a lower carbon economy through investment selection. | The Pensions Committee adopted a new Responsible Investment policy in June 2020. The pensions committee is required to review its investments every 3 years. | Head of Pensions and Investments          | Additional costs of implementing Responsible Investment policy to be borne by the Pension Fund.                                                                   | Implementing    | The Pensions Committee approved a new Responsible Investment policy in September 2022.                                                                                         |

**Target:** The Council will switch to a renewable electricity supply from April 2021.

| Action                                                                                   | Timescale                                                                                                                                                                                                        | Lead<br>(others involved<br>in italics)     | Cost and funding                          | Project status:<br>draft proposal,<br>final proposal,<br>implementing                                                                                                                                                                                                                                                                       | Progress Update |                                                                                                                                                                                                   |
|------------------------------------------------------------------------------------------|------------------------------------------------------------------------------------------------------------------------------------------------------------------------------------------------------------------|---------------------------------------------|-------------------------------------------|---------------------------------------------------------------------------------------------------------------------------------------------------------------------------------------------------------------------------------------------------------------------------------------------------------------------------------------------|-----------------|---------------------------------------------------------------------------------------------------------------------------------------------------------------------------------------------------|
| <b>ENERGY USE:</b>                                                                       |                                                                                                                                                                                                                  |                                             |                                           |                                                                                                                                                                                                                                                                                                                                             |                 |                                                                                                                                                                                                   |
| 24                                                                                       | Develop and deliver a plan for installing renewable energy generation and insulation across the Council estate e.g. solar panels, air source and ground source heat pumps.                                       | 2022/23 - as part of pathways project work. | Energy Manager                            | Feasibility studies will determine costs. External funding will be required such as the Public Sector Decarbonisation Fund.                                                                                                                                                                                                                 | Draft proposal  | Reviews of the estate are taking place to inform this. Where possible, applications to the Public Sector Decarbonisation Fund will be submitted.                                                  |
| 25                                                                                       | Maintain the use of fully renewable electricity across 100% of the Council's estate. This will be procured either through a Power Purchase Agreement or a REGO-backed supplier green tariff.                     | Annually                                    | Energy Manager                            | Met from existing council budgets.                                                                                                                                                                                                                                                                                                          | Implementing    | Procurement since April 2021.                                                                                                                                                                     |
| 26                                                                                       | COMPLETE: Explore options to introduce battery storage from the solar canopy and solar panels with electric vehicle charge points at the Council's Civic Offices and Gibson Road car park in Sutton town centre. | Ongoing                                     | Energy Manager                            | Battery storage study showed this was not feasible due to capacity issues at Civic Offices. UK Power Networks have surveyed the site in summer 2021 and indicated a new sub station (circa £100-150K) is required. This will need to be located on site. Awaiting final report, however, further funding will be needed for implementation. | N/A             | The Council's Civic Offices complex was surveyed for battery storage, however, this proved unfeasible due to the prohibitive cost of the infrastructure changes required.                         |
| <b>New Target:</b> Aspire to achieve net zero carbon emissions across the whole borough. |                                                                                                                                                                                                                  |                                             |                                           |                                                                                                                                                                                                                                                                                                                                             |                 |                                                                                                                                                                                                   |
| 27                                                                                       | NEW: Produce a borough-wide pathway to net zero which identifies actions, potential costs and key stakeholders.                                                                                                  | 2022/23                                     | Head of Climate Action and Sustainability | £40,000                                                                                                                                                                                                                                                                                                                                     | Implementing    | Consultants procured in autumn 2022 to undertake this work. Pathways are expected to be produced by March 2023. These will then be incorporated into the Climate Emergency Response Plan in 2023. |

| Action                              | Timescale                                                                                                                                                                                                                                                                                                                                  | Lead<br>(others involved<br>in italics)                                                                                                    | Cost and funding          | Project status:<br>draft proposal,<br>final proposal,<br>implementing                                                                                                                                                                                                            | Progress Update |                                                                                                                                                                                                                                                                                                                |
|-------------------------------------|--------------------------------------------------------------------------------------------------------------------------------------------------------------------------------------------------------------------------------------------------------------------------------------------------------------------------------------------|--------------------------------------------------------------------------------------------------------------------------------------------|---------------------------|----------------------------------------------------------------------------------------------------------------------------------------------------------------------------------------------------------------------------------------------------------------------------------|-----------------|----------------------------------------------------------------------------------------------------------------------------------------------------------------------------------------------------------------------------------------------------------------------------------------------------------------|
| <b>SUPPORTING ACTION BY OTHERS:</b> |                                                                                                                                                                                                                                                                                                                                            |                                                                                                                                            |                           |                                                                                                                                                                                                                                                                                  |                 |                                                                                                                                                                                                                                                                                                                |
| 28                                  | Support community energy schemes in the borough: promote opportunities for residents, businesses and community groups to generate their own energy locally e.g. solar panels, ground source or air source heat pumps, as well as options to reduce energy use or improve carbon emissions, for example through boiler replacement schemes. | Ongoing - as opportunities arise.                                                                                                          | Sustainability Manager    | This requires an extra member of staff to work with communities to get projects off the ground. External funding is currently available through the Mayor of London.                                                                                                             | N/A             | No progress to date.                                                                                                                                                                                                                                                                                           |
| 29                                  | Extend the Sutton Decentralised Energy Network to deliver low carbon energy to new and existing developments across the borough and realising over 3,000 tonnes of carbon emission savings per annum, based on viability study and financial business cases.                                                                               | Business cases to be submitted to Council by late summer 2023.<br><br>If approved, expansion works would begin by approximately late 2024. | Managing Director of SDEN | Full capital costs to be confirmed upon completion of procurement process before mid 2024.<br><br>Access available to the BEIS Green Heat Network Fund for up to 50% of capital costs. The project potentially offers opportunities for external investors.                      | Draft proposal  | Design consultancy onboarded and currently surveying existing buildings, and exploring future heat loads for regeneration projects.<br><br>Full design package to RIBA stage 3 forecasted to be completed before the end of 2022 with a Design & Build procurement process to be undertaken from January 2023. |
| 30                                  | Work with Community Action Sutton on plans for the future of Hill House that incorporate the environment both in building fabric and as a sustainability exemplar, as well as opportunities for the community e.g. community fridge (with Sutton Housing Partnership), food growing and environmental awareness raising.                   | In development.                                                                                                                            | Head of Asset Management  | Zero carbon build standards will come at additional cost and will require external funding bids. There may be some revenue costs associated with running activities which may be supported through existing council tenders/budgets or that external funding bids could support. | Draft proposal  | Work is being led by Community Action Sutton.                                                                                                                                                                                                                                                                  |



**Focus Areas:** Take action to tackle fuel poverty.

| Action                                                                                                                                                                                                                                                                                                                                                                                              | Timescale           | Lead<br>(others involved<br>in italics)                                                                                                           | Cost and funding                                                                                                                                                                                                                             | Project status:<br>draft proposal,<br>final proposal,<br>implementing | Progress Update                                                                                                                                                                                                                                                                                                                                                                         |
|-----------------------------------------------------------------------------------------------------------------------------------------------------------------------------------------------------------------------------------------------------------------------------------------------------------------------------------------------------------------------------------------------------|---------------------|---------------------------------------------------------------------------------------------------------------------------------------------------|----------------------------------------------------------------------------------------------------------------------------------------------------------------------------------------------------------------------------------------------|-----------------------------------------------------------------------|-----------------------------------------------------------------------------------------------------------------------------------------------------------------------------------------------------------------------------------------------------------------------------------------------------------------------------------------------------------------------------------------|
| <b>FUEL POVERTY:</b>                                                                                                                                                                                                                                                                                                                                                                                |                     |                                                                                                                                                   |                                                                                                                                                                                                                                              |                                                                       |                                                                                                                                                                                                                                                                                                                                                                                         |
| 31 Deliver 'Sutton Healthy Homes', a borough-wide home energy advice service to support residents to increase the energy efficiency of their homes. The scheme will prioritise support for vulnerable residents and those either at risk of, or living in fuel poverty, helping them to access grants and information to reduce their fuel bills and improve the thermal efficiency of their homes. | 2021/22 - 2022/23   | Environment<br>Projects Officer<br><br><i>Public Health<br/>Projects Officer and<br/>Partnership Manager<br/>(Sutton Housing<br/>Partnership)</i> | The existing service is funded from existing budgets. £70,000 per year additional funding would be required to deliver a service which helps address the current demand. This is a result of the cost of living crisis and fuel price rises. | Implementing -<br>Funded until March<br>2023.                         | As of September 2022, 197 of the 200 funded assessments were completed. Thinking Works are confident that the Warmer Homes Advice Service and Redress Funding should cover the needs for assessments through to the end of March 2023.                                                                                                                                                  |
| 32 NEW: Implement actions identified through monitoring of the 'Sutton Healthy Homes' service and from best practice elsewhere, to tackle fuel poverty in Sutton within the framework of Sustainable Warmth and the Fuel Poverty Action Plan for London.                                                                                                                                            | Ongoing - annually. | Environment<br>Projects Officer<br><br><i>Public Health<br/>Projects Officer and<br/>Partnership Manager<br/>(Sutton Housing<br/>Partnership)</i> | Additional funding will be needed to deliver support across the whole borough.<br><br>This action is likely to be impacted by the Government's forthcoming 'Heat and Buildings Strategy'.                                                    | Implementing                                                          | Implementing LAD2 and Sustainable Warmth funding schemes, to retrofit low income, hard to heat homes in the borough. Promotion of Sustainable Warmth funding has started through events, with leaflets and posters and social media. A mailout is being planned and targeting for that is underway. Bidding for HUG2 to be submitted in autumn/winter 2022 as part of a consortium bid. |
| 33 NEW: Seize opportunities which may arise to further the aims of Sutton Healthy Homes through supporting or extending the actions undertaken e.g. involvement in ECOflex, government grant funding.                                                                                                                                                                                               | Ongoing             | Environment<br>Projects Officer                                                                                                                   | Met via existing officer resources.                                                                                                                                                                                                          | Implementing                                                          | As above. Supported a successful joint funding bid by Thinking Works and Citizens Advice for extra debt advisors for Sutton. This now provides crucial support for residents who are vulnerable to fuel poverty.                                                                                                                                                                        |

# CREATING A CIRCULAR ECONOMY

**The vision:** Waste will be reduced and a circular economy created.

**Target:** Reduce waste and increase reuse and recycling from 50% year on year and target being the best recyclers in the UK.

**Target:** Help residents reduce the amount of avoidable food waste they throw away by 20% by 2025.

| Action                                                             | Timescale                                                                                                                                                                                                                                                                                                                                                                                              | Lead<br>(others involved<br>in italics)                    | Cost and funding                                          | Project status:<br>draft proposal,<br>final proposal,<br>implementing                                                                   | Progress Update |                                                                                                                          |
|--------------------------------------------------------------------|--------------------------------------------------------------------------------------------------------------------------------------------------------------------------------------------------------------------------------------------------------------------------------------------------------------------------------------------------------------------------------------------------------|------------------------------------------------------------|-----------------------------------------------------------|-----------------------------------------------------------------------------------------------------------------------------------------|-----------------|--------------------------------------------------------------------------------------------------------------------------|
| <b>REDUCING WASTE, ENCOURAGING REUSE AND INCREASING RECYCLING:</b> |                                                                                                                                                                                                                                                                                                                                                                                                        |                                                            |                                                           |                                                                                                                                         |                 |                                                                                                                          |
| 1                                                                  | Implement the Waste Minimisation Strategy and Reduction and Recycling Plan (RRP). Key areas of action include:<br><br><ul style="list-style-type: none"> <li>▶ Reduce waste;</li> <li>▶ Maximise recycling;</li> <li>▶ Reduce the environmental impact of waste;</li> <li>▶ Maximise the use of local waste sites;</li> <li>▶ Be innovative;</li> <li>▶ Lead by example with our own waste.</li> </ul> | Ongoing<br><br>Updated RRP is due to be published in 2023. | Waste Strategy Manager and Contract & Performance Officer | Associated project costs to be identified individually. Some elements may be funded through the Community Infrastructure Levy and S106. | Draft proposal  | Draft RRP has been produced and will be presented to committee in spring 2023.                                           |
| 2                                                                  | Maintain the map and promotion of reuse and upcycling shops, schemes and projects in the borough.                                                                                                                                                                                                                                                                                                      | 2020/21, then ongoing promotion.                           | Environment Projects Officer                              | Met from existing budgets.                                                                                                              | Implementing    | Map was published in 2021 and has been used as a basis for a regional <a href="#">south west London zero waste map</a> . |

| Action                                                                                                                                                                                      | Timescale           | Lead<br>(others involved<br>in italics)                   | Cost and funding                                                                                                                                                       | Project status:<br>draft proposal,<br>final proposal,<br>implementing | Progress Update                                                                                                                                                                               |
|---------------------------------------------------------------------------------------------------------------------------------------------------------------------------------------------|---------------------|-----------------------------------------------------------|------------------------------------------------------------------------------------------------------------------------------------------------------------------------|-----------------------------------------------------------------------|-----------------------------------------------------------------------------------------------------------------------------------------------------------------------------------------------|
| 3 Promote 'Refill Sutton' where local businesses and organisations refill water bottles for free and sign up more businesses, year on year.                                                 | Ongoing - annually. | Waste Strategy<br>Manager                                 | Met from existing budgets.                                                                                                                                             | Implementing                                                          | Contacted businesses to affirm their commitment in early summer 2022.<br><br>Emailed 280 businesses in autumn 2022 to engage new businesses. Follow up planned with businesses and residents. |
| 4 Work with the GLA and SES Water to install drinking fountains in outdoor high-footfall locations in the borough.                                                                          | Ongoing             | Sustainability<br>Manager<br><br><i>GLA and SES Water</i> | GLA is funding the fountains; funding required for ongoing cleaning and maintenance.                                                                                   | Draft proposal                                                        | Delays due to technical and funding issues with maintenance of fountains.                                                                                                                     |
| 5 COMPLETE: Implement a library of things borrowing service for little used items such as lawn mowers and sewing machines.                                                                  | 2021/22             | Environment<br>Projects Officer                           | £30k set up costs, funded via My Neighbourhood Fund (NCIL).                                                                                                            | N/A - completed                                                       | Launched at Sutton Library in July 2022.                                                                                                                                                      |
| 6 Recommission the textile banks service.                                                                                                                                                   | 2021/22             | Waste Strategy<br>Manager                                 | Met from existing budgets.                                                                                                                                             | N/A                                                                   | Work has been delayed, however, the Council plans to utilise a pan-London framework to procure this service.                                                                                  |
| 7 Work with organisations and residents to expand recycling options across the borough for materials that cannot be collected in kerbside recycling (e.g. crisp packets, coffee cups etc.). | Ongoing             | Waste Strategy<br>Manager                                 | Costs unknown at present but anticipate meeting through existing budgets. Terracycle point has been installed at Sutton Central Library and met from existing budgets. | Implementing                                                          | Terracycle bin installed in Sutton Central library, however, this need has been met by an increase in soft plastic recycling points at shops across the borough.                              |
| 8 COMPLETE: Undertake a waste composition analysis, to guide communications about increasing recycling and reducing contamination.                                                          | 2021/22             | Waste Strategy<br>Manager                                 | Approximately £20k, met from existing council budgets.                                                                                                                 | N/A - Completed                                                       | Waste composition analysis of flats and kerbside collections was completed in 2022 and will now be used to undertake targeted communications.                                                 |

| <b>Action</b> | <b>Timescale</b>                                                                                                                                         | <b>Lead<br/>(others involved<br/>in italics)</b> | <b>Cost and funding</b>                                             | <b>Project status:<br/>draft proposal,<br/>final proposal,<br/>implementing</b>                                                                                                              | <b>Progress Update</b> |                                                                                                                                                                                                                                                                                                |
|---------------|----------------------------------------------------------------------------------------------------------------------------------------------------------|--------------------------------------------------|---------------------------------------------------------------------|----------------------------------------------------------------------------------------------------------------------------------------------------------------------------------------------|------------------------|------------------------------------------------------------------------------------------------------------------------------------------------------------------------------------------------------------------------------------------------------------------------------------------------|
| 9             | Continue to maximise the number of materials collected for recycling, at the doorstep and at the recycling centre.                                       | Ongoing                                          | Head of Waste and Street Cleansing                                  | Met from existing budgets.                                                                                                                                                                   | Draft proposal         | The Council has started work to commission a new waste and recycling service when the current contract ends in 2025. Increasing recycling will be incorporated into new service specifications.                                                                                                |
| 10            | As waste processing technology changes, identify new options to recycle more materials that are currently thrown away as rubbish, and target zero waste. | Ongoing                                          | Head of Waste and Street Cleansing                                  | New services / disposal options may come at additional cost or be a saving. Detailed business cases would be developed on a case-by-case basis.                                              | Draft proposal         | As above, this work is being incorporated into the work to commission a new waste and recycling service.                                                                                                                                                                                       |
| 11            | Work with Veolia, Viridor and other suppliers to develop plans to trial and then transition to a fully zero carbon vehicle waste fleet.                  | As funding and technology allows.                | South London Waste Partnership, Veolia, Viridor and other suppliers | A detailed business case will be required, looking at the whole life costs of the vehicles and the appropriate timescales for phasing out vehicles as part of planned replacement schedules. | Draft proposal         | Plans are being developed to trial a single vehicle incorporated into the existing fleet in partnership with Faun Zoller and Veolia. This will be used to inform the decarbonisation of waste and street cleansing fleet as part of 2025 re-commissioning process. This is subject to funding. |

**Focus area:** Embed sustainable procurement into the Council's buying and contracts.

### **DECISION MAKING AND PROCUREMENT:**

|    |                                                                                                                                                                                                                                                                                                        |      |                              |                            |                |                                                                                               |
|----|--------------------------------------------------------------------------------------------------------------------------------------------------------------------------------------------------------------------------------------------------------------------------------------------------------|------|------------------------------|----------------------------|----------------|-----------------------------------------------------------------------------------------------|
| 12 | Finalise Sutton Council's sustainable procurement guide to focus on circular economy and achieving zero carbon goals, and provide training for staff. This includes how to secure environmental improvements through added social value and the environmental expectations we have of our contractors. | 2023 | Environment Projects Officer | Met from existing budgets. | Draft proposal | Work with the procurement team is underway to review draft documents and plan implementation. |
|----|--------------------------------------------------------------------------------------------------------------------------------------------------------------------------------------------------------------------------------------------------------------------------------------------------------|------|------------------------------|----------------------------|----------------|-----------------------------------------------------------------------------------------------|

| Action | Timescale                                                                                                                                                     | Lead (others involved in italics) | Cost and funding             | Project status: draft proposal, final proposal, implementing | Progress Update |                                                                                                                          |
|--------|---------------------------------------------------------------------------------------------------------------------------------------------------------------|-----------------------------------|------------------------------|--------------------------------------------------------------|-----------------|--------------------------------------------------------------------------------------------------------------------------|
| 13     | Build circular economy, zero carbon and sustainability principles into all new council-let contracts and seek to influence those let on our behalf by others. | Ongoing                           | Environment Projects Officer | This requires an additional officer to progress.             | Draft proposal  | As above, grace period, categories covered and spend thresholds to be determined and then agreed by the leadership team. |

**Focus area:** Encourage businesses to switch to circular economy business models.

## REDUCING WASTE, ENCOURAGING REUSE AND INCREASING RECYCLING:

### Supporting others to take action

|    |                                                                                                                                                                                        |                |                                                                                                                                                                                                                    |                                                                               |                           |                                                                                                                                                                                                                                                                                                                            |
|----|----------------------------------------------------------------------------------------------------------------------------------------------------------------------------------------|----------------|--------------------------------------------------------------------------------------------------------------------------------------------------------------------------------------------------------------------|-------------------------------------------------------------------------------|---------------------------|----------------------------------------------------------------------------------------------------------------------------------------------------------------------------------------------------------------------------------------------------------------------------------------------------------------------------|
| 14 | Offer an audit and advice service for small businesses, charities and community organisations with premises, helping them access grants and information on environmental improvements. | 2021/22        | Climate Partnership Manager                                                                                                                                                                                        | BEIS Additional Restrictions Grant 3 (ARG-3) supplied funding for businesses. | Implementing - businesses | This was delivered as part of the BEIS Additional Restrictions Grant 3 (ARG-3). 75% (45 out of 60) of businesses engaged.                                                                                                                                                                                                  |
| 15 | Work with partners, businesses and interested organisations on projects that implement circular economy principles and demonstrate the potential of the approach.                      | From 2021/2022 | Climate Partnership Manager<br><br><i>(Businesses, Business Improvement Districts, Sutton Housing Partnership, housing associations, voluntary and community organisations and South London Waste Partnership)</i> | Cost will be met by a partnership fee by participating businesses.            | Implementing              | The <a href="#">Green Enterprise Partnership</a> launched in November 2022 as a trial to provide a formal scheme for businesses to measure, track and reduce their emissions. The scheme will provide tax incentives for up to 2 years to businesses in the town centre progressing through a 4-step certification scheme. |

| Action                                                                                                                                                                                                                                            | Timescale | Lead<br>(others involved<br>in italics)                                                                      | Cost and funding                                                                                                                   | Project status:<br>draft proposal,<br>final proposal,<br>implementing | Progress Update                                                                                      |
|---------------------------------------------------------------------------------------------------------------------------------------------------------------------------------------------------------------------------------------------------|-----------|--------------------------------------------------------------------------------------------------------------|------------------------------------------------------------------------------------------------------------------------------------|-----------------------------------------------------------------------|------------------------------------------------------------------------------------------------------|
| 16 Work with local businesses and skills and training providers to develop the local supply chain needed to achieve building retrofit goals and support a local green economy. Support local people to access the training needed for these jobs. | Ongoing   | Senior Project Manager, Employment and Skills<br><br>Green Skills Academy is led by South London Partnership | Additional funding is expected to be required to deliver training programmes, however promotion will be met from existing budgets. | Implementing                                                          | This work is being delivered via the <a href="#">South London Partnership Green Skills Academy</a> . |

### COUNCIL OPERATIONS:

|                                                                                                                                                                                                                                                      |                                           |                                                        |                                                                           |              |                                                                                                             |
|------------------------------------------------------------------------------------------------------------------------------------------------------------------------------------------------------------------------------------------------------|-------------------------------------------|--------------------------------------------------------|---------------------------------------------------------------------------|--------------|-------------------------------------------------------------------------------------------------------------|
| 17 When the Council refurbishes, consolidates or moves buildings, reuse as much office furniture, stationery and building fabric as possible, either elsewhere in the Council or by offering it to others, and apply the 'circular office' approach. | Ongoing - as building changes take place. | Head of FM Client<br><br><i>Sustainability Manager</i> | Potential cost to join reuse platforms, can be met from existing budgets. | Implementing | During the relocation of staff from the Denmark Road, Carshalton offices, items were rehomed using freegle. |
|------------------------------------------------------------------------------------------------------------------------------------------------------------------------------------------------------------------------------------------------------|-------------------------------------------|--------------------------------------------------------|---------------------------------------------------------------------------|--------------|-------------------------------------------------------------------------------------------------------------|

# TACKLING CLIMATE CHANGE

**Target:** Retain Sustainable Food City status each year.

| Action                                  | Timescale                                                                                                                                                | Lead<br>(others involved<br>in italics)         | Cost and funding                                                                                                      | Project status:<br>draft proposal,<br>final proposal,<br>implementing                              | Progress Update        |                                                                        |
|-----------------------------------------|----------------------------------------------------------------------------------------------------------------------------------------------------------|-------------------------------------------------|-----------------------------------------------------------------------------------------------------------------------|----------------------------------------------------------------------------------------------------|------------------------|------------------------------------------------------------------------|
| <b>PLANNING:</b>                        |                                                                                                                                                          |                                                 |                                                                                                                       |                                                                                                    |                        |                                                                        |
| 1                                       | Deliver the Local Plan Policy 25b (open spaces) on allotments and promote allotment plot availability.                                                   | Ongoing                                         | Planning Officer - Strategic Planning                                                                                 | Met from existing council budgets.                                                                 | Implementing           | Monitoring via the <a href="#">Authority Monitoring Report (AMR)</a> . |
| <b>DECISION MAKING AND PROCUREMENT:</b> |                                                                                                                                                          |                                                 |                                                                                                                       |                                                                                                    |                        |                                                                        |
| 2                                       | Extend sustainable catering commitments to the meals on wheels contract and other food outlets under Council-let contracts e.g. library and parks cafes. | Ongoing - as contracts / tenancies are renewed. | All managers of services with food-related services or contracts e.g. Meals on Wheels, Library Cafes, Park cafes etc. | Contract changes are the best time to incorporate this. There is likely to be an increase in cost. | Implementing - schools | Considerations currently included in school meals contracts.           |

| Action                                                                                                                                                                                                                                                                                                                                                                                                                                                                                                                                                                                                                                                                                                                                                                                                                                                                                                                                                                                                   | Timescale                                                    | Lead<br>(others involved<br>in italics) | Cost and funding           | Project status:<br>draft proposal,<br>final proposal,<br>implementing | Progress Update                                                               |
|----------------------------------------------------------------------------------------------------------------------------------------------------------------------------------------------------------------------------------------------------------------------------------------------------------------------------------------------------------------------------------------------------------------------------------------------------------------------------------------------------------------------------------------------------------------------------------------------------------------------------------------------------------------------------------------------------------------------------------------------------------------------------------------------------------------------------------------------------------------------------------------------------------------------------------------------------------------------------------------------------------|--------------------------------------------------------------|-----------------------------------------|----------------------------|-----------------------------------------------------------------------|-------------------------------------------------------------------------------|
| <b>SUPPORTING ACTION BY OTHERS:</b>                                                                                                                                                                                                                                                                                                                                                                                                                                                                                                                                                                                                                                                                                                                                                                                                                                                                                                                                                                      |                                                              |                                         |                            |                                                                       |                                                                               |
| <p>3 Retain borough Sustainable Food City status through the Sutton Food Forum, delivering the action plan that:</p> <ul style="list-style-type: none"> <li>▶ makes healthy and sustainable food a defining characteristic of the borough;</li> <li>▶ maps where in the borough local food is grown and sold and identifies the support (if any) these initiatives need;</li> <li>▶ addresses food poverty including holiday hunger. This may link to action on fuel poverty; and</li> <li>▶ improves Sutton's score on the Good Food for London report.</li> </ul> <p>How this will help: Agriculture and food waste are a significant contributor to global emissions. Sustainable food also addresses multiple public health, environmental and inequalities areas:</p> <ul style="list-style-type: none"> <li>▶ Locally grown food;</li> <li>▶ Cooking skills;</li> <li>▶ Reducing food waste;</li> <li>▶ Cooking on a budget;</li> <li>▶ Healthy food;</li> <li>▶ School holiday hunger.</li> </ul> | Ongoing - annual reporting via the survey issued by Sustain. | Public Health Officer                   | Met from existing budgets. | Implementing                                                          | Will seek to improve the Council's approach as part of the Local Plan review. |



**Target:** Work with SES Water to help people reduce their daily water use to 138 litres by 2025.

This work is delivered via the [SES Water Resources Management Plan](#), however, actions below relate to how the Council is working to reduce its own water use.

| Action                                | Timescale                                                                                                                     | Lead (others involved in italics) | Cost and funding                                             | Project status: draft proposal, final proposal, implementing                                                                                                                                                                                                                                        | Progress Update |                                               |
|---------------------------------------|-------------------------------------------------------------------------------------------------------------------------------|-----------------------------------|--------------------------------------------------------------|-----------------------------------------------------------------------------------------------------------------------------------------------------------------------------------------------------------------------------------------------------------------------------------------------------|-----------------|-----------------------------------------------|
| <b>COUNCIL OPERATIONAL BUILDINGS:</b> |                                                                                                                               |                                   |                                                              |                                                                                                                                                                                                                                                                                                     |                 |                                               |
| 4                                     | Identify if there are cost-effective options to improve the Council's water efficiency in its buildings (e.g. toilets, taps). | Ongoing - annual review.          | Energy Manager<br><i>ADSM (the Council's water provider)</i> | Funded by AquaFund, operated by council water provider ADSM. Water efficiency technologies have been implemented throughout the corporate estate such as automated meter reading devices and urinal and water flow control devices being fitted. As new technology develops they will also be used. | Implementing    | This is ongoing, with leaks reported by ADSM. |
| 5                                     | Review water usage in services using high volumes of water e.g. parks.                                                        | Ongoing - annual review.          | Energy Manager<br><i>ADSM (the Council's water provider)</i> | Funded by AquaFund, operated by council water provider ADSM. The top 10 sites have been identified and consumption analysis is being undertaken.                                                                                                                                                    | Implementing    | This is ongoing, with leaks reported by ADSM. |

**Focus area:** Raise awareness of the climate emergency, the impacts of climate change on Sutton, and the actions individuals can take.

**ENCOURAGE INDIVIDUAL ACTION ON THE CLIMATE EMERGENCY:**

|   |                                                                                                                                                                                   |         |                                                                        |                                                                                                                                 |              |                                                                                                                                                         |
|---|-----------------------------------------------------------------------------------------------------------------------------------------------------------------------------------|---------|------------------------------------------------------------------------|---------------------------------------------------------------------------------------------------------------------------------|--------------|---------------------------------------------------------------------------------------------------------------------------------------------------------|
| 6 | Raise awareness of the climate emergency and encourage behaviour change e.g. paving over gardens, fast fashion, reuse, water reduction, food waste, cycling and walking.          | Ongoing | Sustainability Manager<br><i>Communications and Engagement Officer</i> | From existing budgets. We will apply for funding where this would support or increase our environmental work or communications. | Implementing | COP26 campaign of events delivered in autumn 2022. Regular communication throughout the year linked to regional or national campaigns e.g. Repair Week. |
| 7 | Maintain information on the Council's website about the actions people, businesses, landlords and organisations can take on climate change, with links to guidance and expertise. | Ongoing | Environment Projects Officer                                           | Met from existing budgets.                                                                                                      | Implementing | This information is available on the <a href="#">what you can do</a> page on the website.                                                               |

|   | Action                                                                                                                                                                                                                   | Timescale                                                | Lead<br>(others involved<br>in italics)   | Cost and funding                                                                            | Project status:<br>draft proposal,<br>final proposal,<br>implementing | Progress Update                                                       |
|---|--------------------------------------------------------------------------------------------------------------------------------------------------------------------------------------------------------------------------|----------------------------------------------------------|-------------------------------------------|---------------------------------------------------------------------------------------------|-----------------------------------------------------------------------|-----------------------------------------------------------------------|
| 8 | Work with schools, charities, environmental groups, businesses, business groups and interested partners to raise awareness and support action. Explore ways to celebrate and recognise action.                           | Ongoing                                                  | Head of Climate Action and Sustainability | Additional officer is required to undertake this in a meaningful and consistent way         | N/A                                                                   | N/A                                                                   |
| 9 | Work with and support the <a href="#">London Councils Climate Programmes</a> to develop the case for legislative and regulatory change, investment and leadership at national level to respond to the climate emergency. | Defined in each of the climate programmes' action plans. | Head of Climate Action and Sustainability | Funding requirements and borough contributions are being determined by each programme lead. | Draft proposal                                                        | This work is being led by the climate action and sustainability team. |

## VOLUNTEERING:

|    |                                                                                                                                                 |                                                 |                              |                            |              |                                                                                             |
|----|-------------------------------------------------------------------------------------------------------------------------------------------------|-------------------------------------------------|------------------------------|----------------------------|--------------|---------------------------------------------------------------------------------------------|
| 10 | COMPLETE: Create a network of community environment champions to encourage friends, neighbours and colleagues to take action on climate change. | 2021/22 (delayed due to COVID-19 restrictions). | Environment Projects Officer | Met from existing budgets. | Implementing | The network launched in 2021 and has over 50 members.                                       |
| 11 | NEW: Maintain a network of community environment champions to encourage friends, neighbours and colleagues to take action on climate change.    | Ongoing since 2021 launch of network.           | Environment Projects Officer | Met from existing budgets. | Implementing | Over 50 champions meet regularly and a small group has formed to launch Sutton Repair Cafe. |

**Focus area:** Increase the preparedness of Sutton’s people, public services and infrastructure for extremes of temperature, drought and flooding.

| Action                                                                                                                                                                                                                                                                          | Timescale                          | Lead<br>(others involved<br>in italics)                                                                                                                                                                                            | Cost and funding                                                                                                                                                                              | Project status:<br>draft proposal,<br>final proposal,<br>implementing | Progress Update                                                                          |
|---------------------------------------------------------------------------------------------------------------------------------------------------------------------------------------------------------------------------------------------------------------------------------|------------------------------------|------------------------------------------------------------------------------------------------------------------------------------------------------------------------------------------------------------------------------------|-----------------------------------------------------------------------------------------------------------------------------------------------------------------------------------------------|-----------------------------------------------------------------------|------------------------------------------------------------------------------------------|
| <b>INCREASING RESILIENCE TO CLIMATE CHANGE:</b>                                                                                                                                                                                                                                 |                                    |                                                                                                                                                                                                                                    |                                                                                                                                                                                               |                                                                       |                                                                                          |
| 12 Use the Climate Just framework to work with people identified as being vulnerable, as well as with the community and voluntary sector and places such as care homes and hospitals to build knowledge and action when there is a risk of heat waves, excess cold or flooding. | 2022/23 (delayed due to COVID-19). | Head of Climate Action and Sustainability<br><br><i>NHS Clinical Commissioning Group, voluntary and community services. Colleagues from Sutton Council - Public Health, Communications, Social Services and Emergency Planning</i> | Additional funding and resources required to progress.                                                                                                                                        | N/A                                                                   | N/A                                                                                      |
| 13 Deliver the Worcester Park Flood Alleviation Scheme.                                                                                                                                                                                                                         | Ongoing                            | Flood Risk Officer                                                                                                                                                                                                                 | Fully funded from existing council budget and from the Environment Agency and Thames Water funding.                                                                                           | Implementing                                                          | Finalising detailed design.                                                              |
| 14 Progress the catchment wide feasibility study to determine appropriate flood alleviation scheme(s) across the Beddington Gardens, Wallington Station and South Beddington priority areas.                                                                                    | Ongoing                            | Flood Risk Officer                                                                                                                                                                                                                 | Feasibility study funded by the existing council budget. Additional funding will be required from the Environment Agency to progress the schemes after this stage, if they meet the criteria. | Implementing                                                          | Feasibility study in development.                                                        |
| 15 Deliver the ‘SuDS in Sutton Schools’ project, which will introduce natural drainage features to reduce flood risk in playgrounds as well as the local area. The project will provide educational resources for learning.                                                     | 2023/24                            | Principal Engineer                                                                                                                                                                                                                 | Estimated total cost is £1.7m, predominantly externally funded. The Council has committed £500K towards the project.                                                                          | Final proposal                                                        | Project is awaiting the approval of the Outline Business Case by the Environment Agency. |

| Action                                                                                                                                                                                                                            | Timescale | Lead<br>(others involved<br>in italics)                                                                 | Cost and funding                                                                                             | Project status:<br>draft proposal,<br>final proposal,<br>implementing | Progress Update                                                                                                                                                                      |
|-----------------------------------------------------------------------------------------------------------------------------------------------------------------------------------------------------------------------------------|-----------|---------------------------------------------------------------------------------------------------------|--------------------------------------------------------------------------------------------------------------|-----------------------------------------------------------------------|--------------------------------------------------------------------------------------------------------------------------------------------------------------------------------------|
| 16 Support the delivery of the River Wandle and Beverly Brook Catchment Plans to achieve Water Framework Directive targets.                                                                                                       | Ongoing   | South East Rivers Trust<br><br><i>Senior Biodiversity Officer - provides reporting/progress updates</i> | There are a variety of projects with associated costs. This strategy doesn't provide any additional funding. | Implementing                                                          | The Council works closely with the South East Rivers Trust to support this work. Detailed updates are included in quarterly reports including plans to improve the Goat Bridge area. |
| 17 Work with the GLA and Public Health England on emergency planning for heatwaves. Response mechanisms will include 'cool' spaces in public buildings and assets.                                                                | Ongoing   | Emergency Planning Officer                                                                              | Met from existing budgets.                                                                                   | Implementing                                                          | Heatwave advice and support provided during summer 2022. Cool spaces are also published on the GLA map.                                                                              |
| 18 Raise awareness of Met Office severe weather alerts, supporting residents, schools and businesses to sign up to alerts to be directly informed when severe weather events are anticipated and take action to plan accordingly. | Ongoing   | Emergency Planning Officer                                                                              | Met from existing budgets.                                                                                   | Implementing                                                          | This work is implemented as 'Business As Usual' during periods of severe weather.                                                                                                    |

## STREETS AND PUBLIC SPACES:

|                                                                                                                                                                |                                     |                                        |                                                                                                                                                             |                |                                                                                                                                                                           |
|----------------------------------------------------------------------------------------------------------------------------------------------------------------|-------------------------------------|----------------------------------------|-------------------------------------------------------------------------------------------------------------------------------------------------------------|----------------|---------------------------------------------------------------------------------------------------------------------------------------------------------------------------|
| 19 Include sustainable drainage systems (SuDS) in every road improvement scheme and assess the feasibility of switching to 100% permeable surfacing materials. | As part of planned programme works. | Design and Delivery Manager (Highways) | There may be additional costs to include SuDS and for ongoing maintenance. These costs need to be included in scheme financial considerations at the start. | Draft Proposal | Most of the programme is at feasibility or preliminary design stage. Therefore, there is an opportunity to deliver SuDs in most of the projects within the LIP programme. |
|----------------------------------------------------------------------------------------------------------------------------------------------------------------|-------------------------------------|----------------------------------------|-------------------------------------------------------------------------------------------------------------------------------------------------------------|----------------|---------------------------------------------------------------------------------------------------------------------------------------------------------------------------|

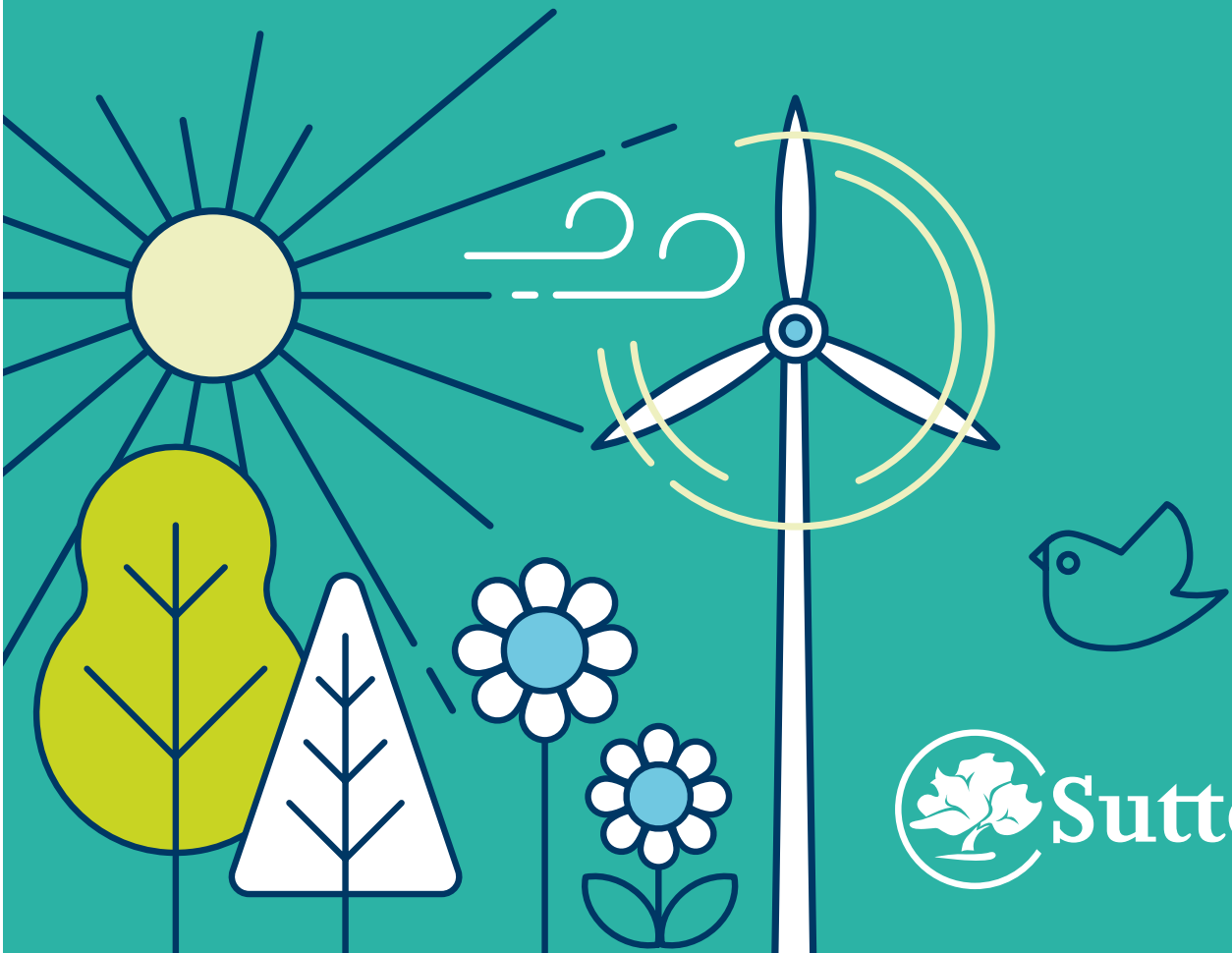
| Action           | Timescale                                                                                                                                                                                                                                                                                                                                                                                                  | Lead<br>(others involved<br>in italics) | Cost and funding                       | Project status:<br>draft proposal,<br>final proposal,<br>implementing | Progress Update |                                                                                        |
|------------------|------------------------------------------------------------------------------------------------------------------------------------------------------------------------------------------------------------------------------------------------------------------------------------------------------------------------------------------------------------------------------------------------------------|-----------------------------------------|----------------------------------------|-----------------------------------------------------------------------|-----------------|----------------------------------------------------------------------------------------|
| <b>PLANNING:</b> |                                                                                                                                                                                                                                                                                                                                                                                                            |                                         |                                        |                                                                       |                 |                                                                                        |
| 20               | Implement Local Plan Policies 26c (Biodiversity) and 33b (Climate Change Adaptation) <sup>21</sup> in line with the Council's Technical Guidance Note on 'Building a Sustainable Sutton' (June 2018). Compliance of major developments with the relevant green space factor (GSF) and biodiversity accounting targets is reported annually in Sutton's <a href="#">Authority Monitoring Report (AMR)</a> . | Ongoing - monitored annually.           | Senior Planner<br>(Strategic Planning) | Met from existing budgets.                                            | Implementing    | Detailed progress available in the <a href="#">Authority Monitoring Report (AMR)</a> . |


1. [Local Plan, 2018 Policy 26](#) is found on page 91 and [Policy 33](#) on page 114.

# CROSS CUTTING

| Action                                  | Timescale                                                                                                                                                                                                                                                             | Lead<br>(others involved<br>in italics) | Cost and funding                                                                 | Project status:<br>draft proposal,<br>final proposal,<br>implementing | Progress Update |                                                                                                                                                                                                                                           |
|-----------------------------------------|-----------------------------------------------------------------------------------------------------------------------------------------------------------------------------------------------------------------------------------------------------------------------|-----------------------------------------|----------------------------------------------------------------------------------|-----------------------------------------------------------------------|-----------------|-------------------------------------------------------------------------------------------------------------------------------------------------------------------------------------------------------------------------------------------|
| <b>DECISION MAKING AND PROCUREMENT:</b> |                                                                                                                                                                                                                                                                       |                                         |                                                                                  |                                                                       |                 |                                                                                                                                                                                                                                           |
| 1                                       | All council committee papers will consider a sustainability impact analysis of the policy or decision being made.                                                                                                                                                     | 2022                                    | Head of Climate Action & Sustainability<br><br><i>Head of Committee Services</i> | No cost.                                                              | Final proposal  | Climate Impact Assessment and guidance has been developed and is being trialled with teams before rolling out across the Council at the end of 2022.                                                                                      |
| 2                                       | Reduce as much as possible paper copies supplied for committee meetings through: <ul style="list-style-type: none"> <li>▶ concise reports;</li> <li>▶ encouraging members to go paperless; and</li> <li>▶ only providing paper copies for complex reports.</li> </ul> | Ongoing                                 | Committee Services Manager                                                       | No cost.                                                              | Implementing    | Paper-free support to councillors pursued as part of May 2022 intake of councillors. 18 of 55 councillors currently receive printed copies of reports. All 55 councillors have been issued with Chromebooks in order to reduce paper use. |
| <b>DECISION MAKING AND PROCUREMENT:</b> |                                                                                                                                                                                                                                                                       |                                         |                                                                                  |                                                                       |                 |                                                                                                                                                                                                                                           |
| 3                                       | Explore the use of innovative green financial instruments, low or no-interest borrowing and community sources of funding to deliver environmental improvements.                                                                                                       | Ongoing                                 | Head of Climate Action & Sustainability                                          | Any new financial approach will require a business case.              | Draft proposal  | Options are being considered and discussed with finance colleagues.                                                                                                                                                                       |

| Action                              | Timescale                                                                                                                                                                                                                                                                     | Lead<br>(others involved<br>in italics)              | Cost and funding                                                                 | Project status:<br>draft proposal,<br>final proposal,<br>implementing                                                                                                                                                                                                     | Progress Update                |                                                                                                                                                                                                                                                    |
|-------------------------------------|-------------------------------------------------------------------------------------------------------------------------------------------------------------------------------------------------------------------------------------------------------------------------------|------------------------------------------------------|----------------------------------------------------------------------------------|---------------------------------------------------------------------------------------------------------------------------------------------------------------------------------------------------------------------------------------------------------------------------|--------------------------------|----------------------------------------------------------------------------------------------------------------------------------------------------------------------------------------------------------------------------------------------------|
| <b>COUNCIL STAFF:</b>               |                                                                                                                                                                                                                                                                               |                                                      |                                                                                  |                                                                                                                                                                                                                                                                           |                                |                                                                                                                                                                                                                                                    |
| 4                                   | Promote ways staff can reduce their environmental impact at home and in the workplace, including: <ul style="list-style-type: none"> <li>▶ Waste and recycling;</li> <li>▶ Heating and energy use;</li> <li>▶ Travelling to and during work;</li> <li>▶ Water use.</li> </ul> | Ongoing                                              | Environment Projects Officer<br><br><i>Communications and Engagement Officer</i> | Carbon Trust recommends spending the equivalent of 1% of energy bills on awareness campaigns, with an estimated energy saving of half the cost of the campaign. This would be approx. £30k. This cannot be achieved with existing budgets.                                | Implementing                   | Ongoing communications happen throughout the year. The focus has been on energy efficiency and the cost of living crisis.<br><br>A Climate Action Community of Practice has been established which incorporates the staff environmental champions. |
| 5                                   | COMPLETED: Create a network of environment champions within the Council.                                                                                                                                                                                                      | 2021/22                                              | Environment Projects Officer                                                     | Met from existing budgets.                                                                                                                                                                                                                                                | Implementing                   | The group merged with the Community of Practice in October 2022.                                                                                                                                                                                   |
| 6                                   | NEW: Deliver a Climate Action Community of Practice, equipping staff with skills, knowledge and tools to respond to the Climate Emergency.                                                                                                                                    | Ongoing                                              | Sustainability Manager                                                           | Met from existing staffing resource                                                                                                                                                                                                                                       | Implementing                   | Launched in June 2022, the group now meets monthly to review best practice and different learning areas.                                                                                                                                           |
| <b>SUPPORTING ACTION BY OTHERS:</b> |                                                                                                                                                                                                                                                                               |                                                      |                                                                                  |                                                                                                                                                                                                                                                                           |                                |                                                                                                                                                                                                                                                    |
| 7                                   | Offer an audit and advice service for schools, helping them access grants and information on environmental improvements.                                                                                                                                                      | As funding permits.                                  | Head of Climate Action & Sustainability                                          | The Ashden / Friends of the Earth toolkit proposes a part-time member of staff and to target a total reduction in CO <sub>2</sub> of 1,875 tonnes. This requires an extra member of staff to progress this. Schools can access interest free loans through Salix finance. | N/A - no resources to progress | N/A                                                                                                                                                                                                                                                |
| 8                                   | Continue to promote funding opportunities to relevant groups for environment improvements e.g. businesses, charities, groups that work with vulnerable residents, schools etc.                                                                                                | Ongoing - promoting as relevant opportunities arise. | Sustainability Manager and Climate Partnership Manager                           | Time on promotion can be met from existing resources. Funding is made available from a range of sources, for public sector, private sector, individuals and communities.                                                                                                  | Implementing                   | Funding is shared regularly with partners. The Climate Partnership Manager is supporting local organisations to obtain funding for a Sutton Circular Economy Store.                                                                                |



 **Sutton**