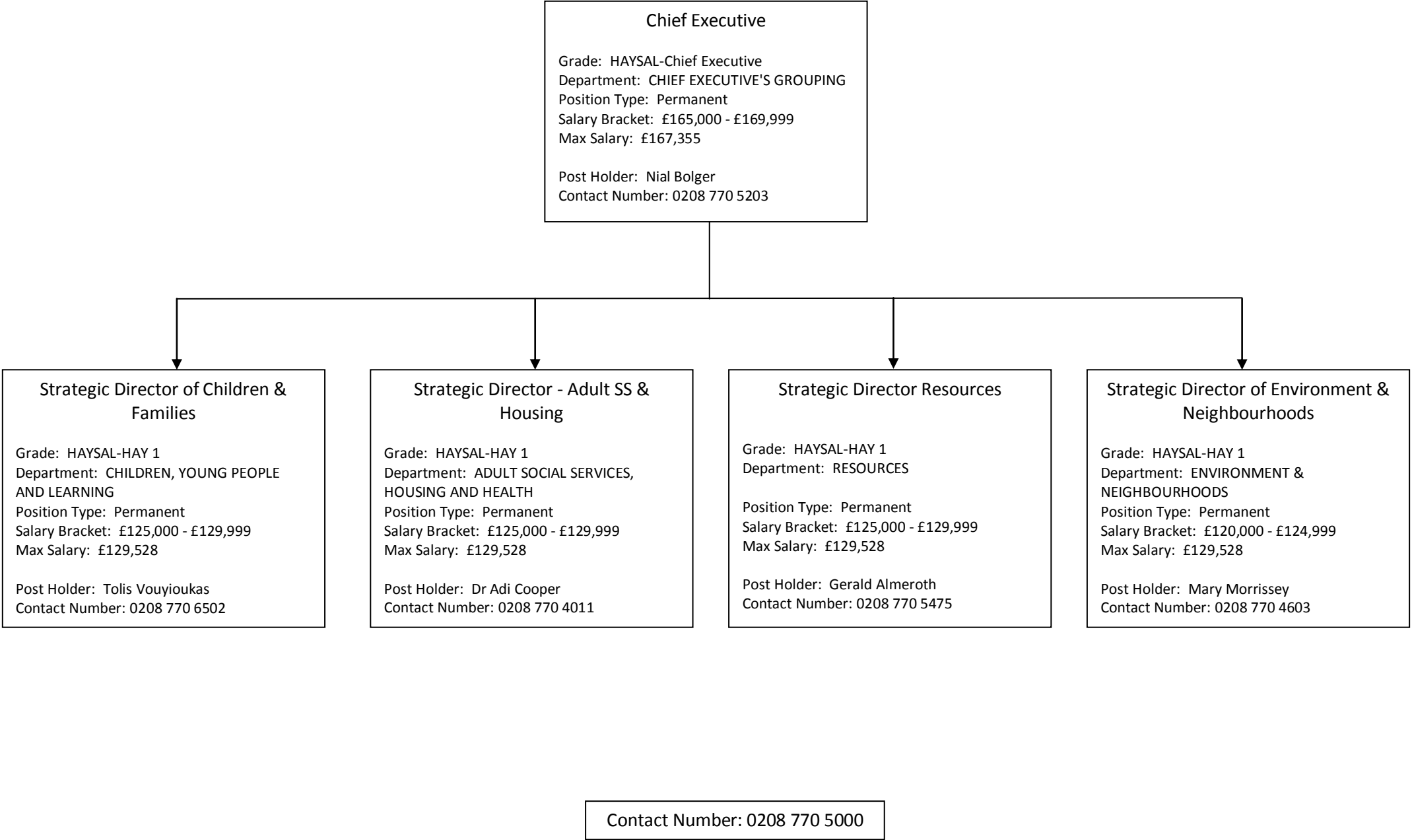


Top Tier Management Chart



Second Tier Management Chart  
Department: Children, Young People and Learning

[Strategic Director of Children & Families](#)

EHOS - Education Learning & Intervention

Reports to: Strategic Director of Children & Families  
Grade: HAYSAL-HAY 2  
Team: Education Learning & Intervention  
Position Type: Permanent  
Salary Bracket: £90,000 - £94,999  
Max Salary: £94,131  
Post Holder: Occupied  
Contact Number: 0208 770 5827

EHOS - Planning & Commissioned Services

Reports to: Strategic Director of Children & Families  
Grade: HAYSAL-HAY 2  
Team: Planning & Commissioned Services  
Position Type: Permanent  
Salary Bracket: £ - £  
Max Salary: £94,131  
Post Holder: VACANT

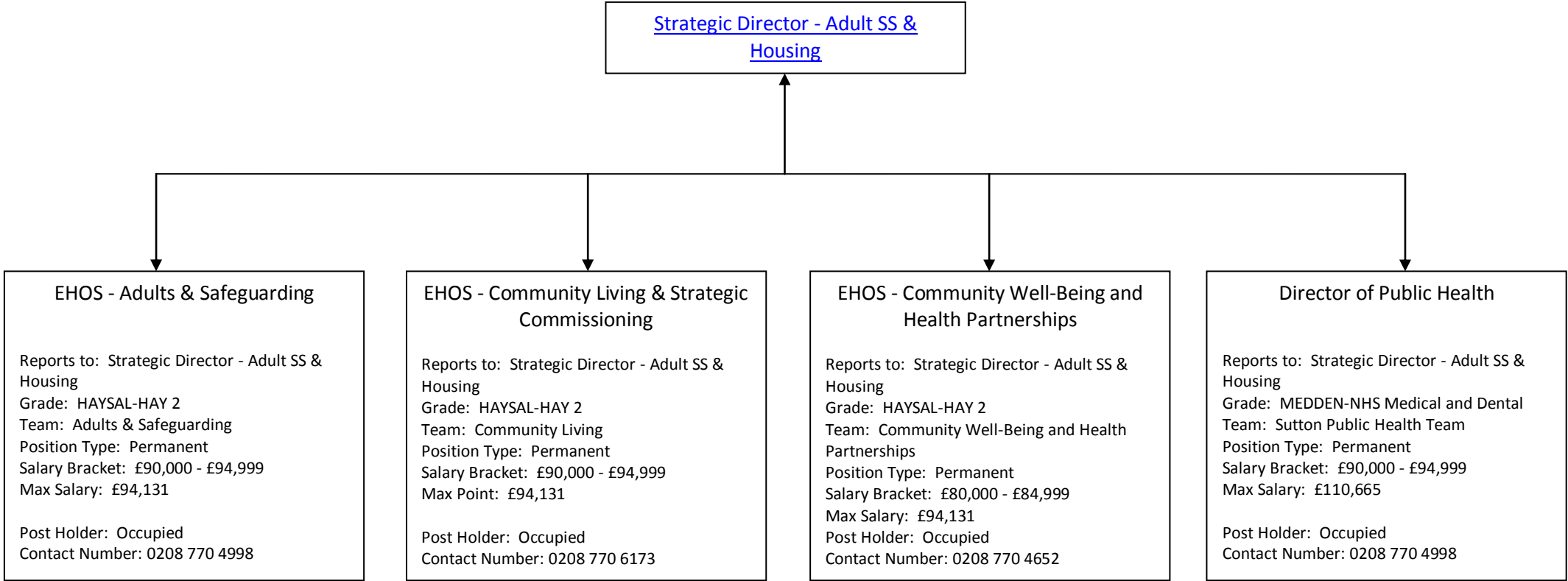
EHOS - Safeguarding

Reports to: Strategic Director of Children & Families  
Grade: HAYSAL-HAY 2  
Team: Safeguarding  
Position Type: Permanent  
Salary Bracket: £90,000 - £94,999  
Max Salary: £94,131  
Post Holder: Occupied  
Contact Number: 0208 770 4007

EHOS = Executive Head of Service

Contact Number: 0208 770 5000

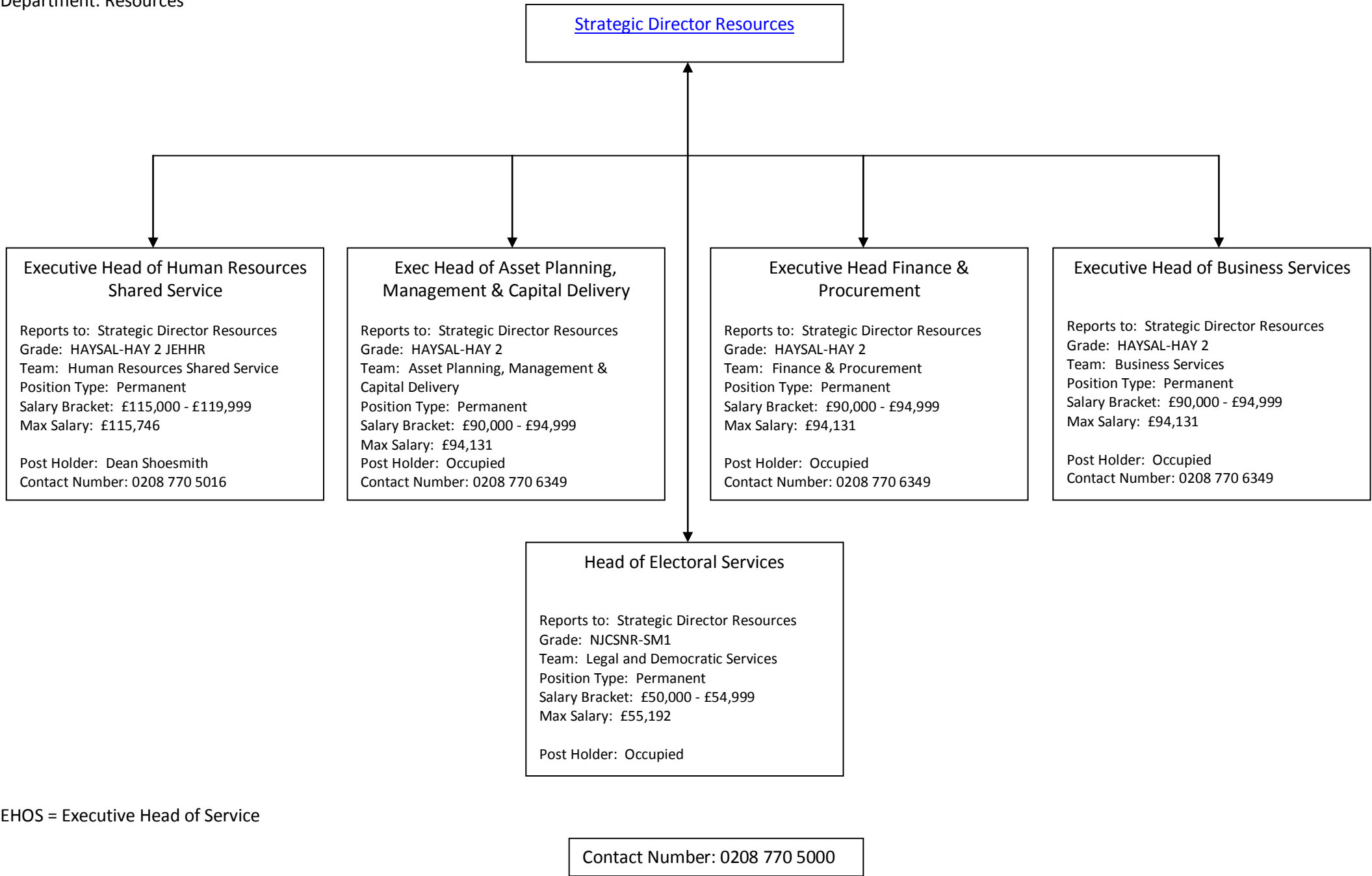
Second Tier Management Chart  
Department: Adult Social Services, Housing and Health



EHOS = Executive Head of Service

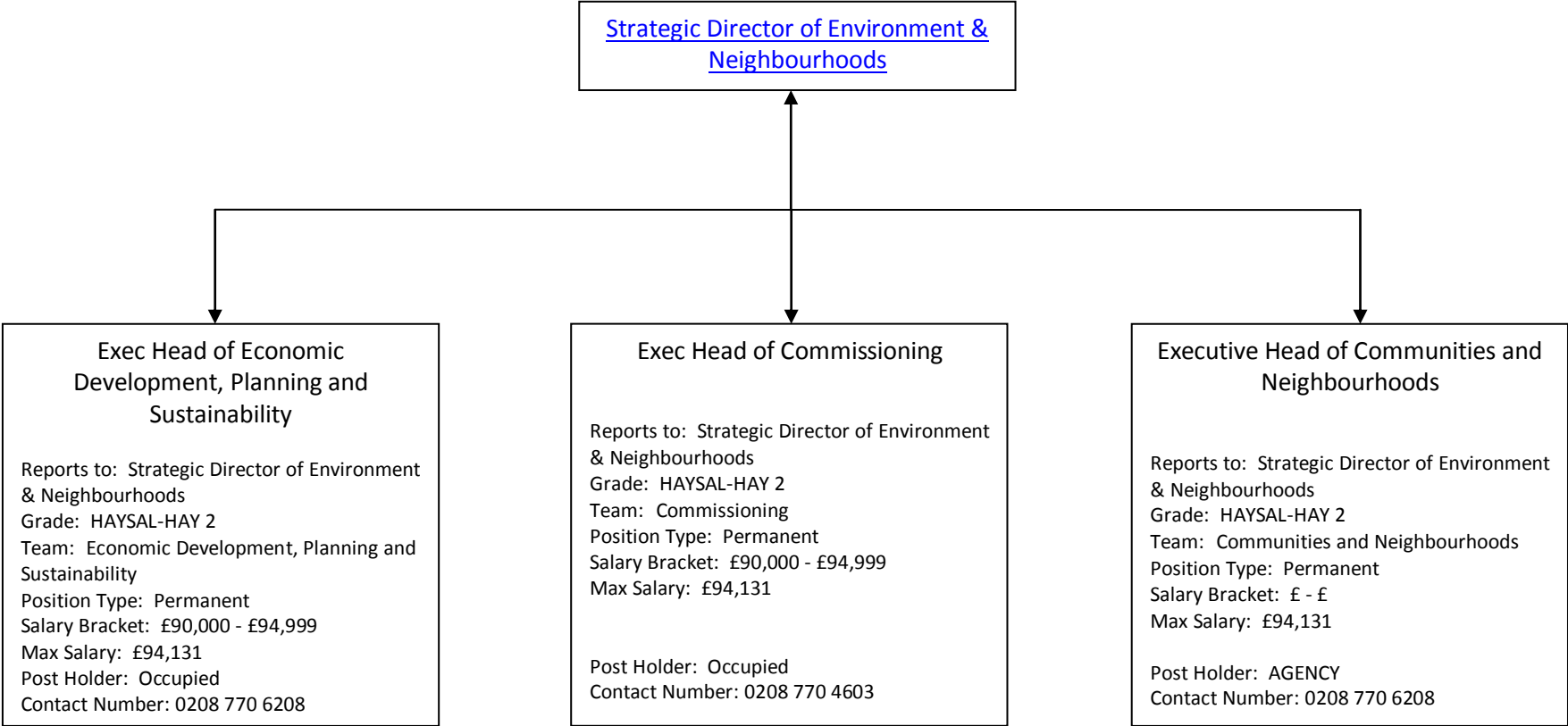
Contact Number: 0208 770 5000

Second Tier Management Chart  
Department: Resources



EHOS = Executive Head of Service

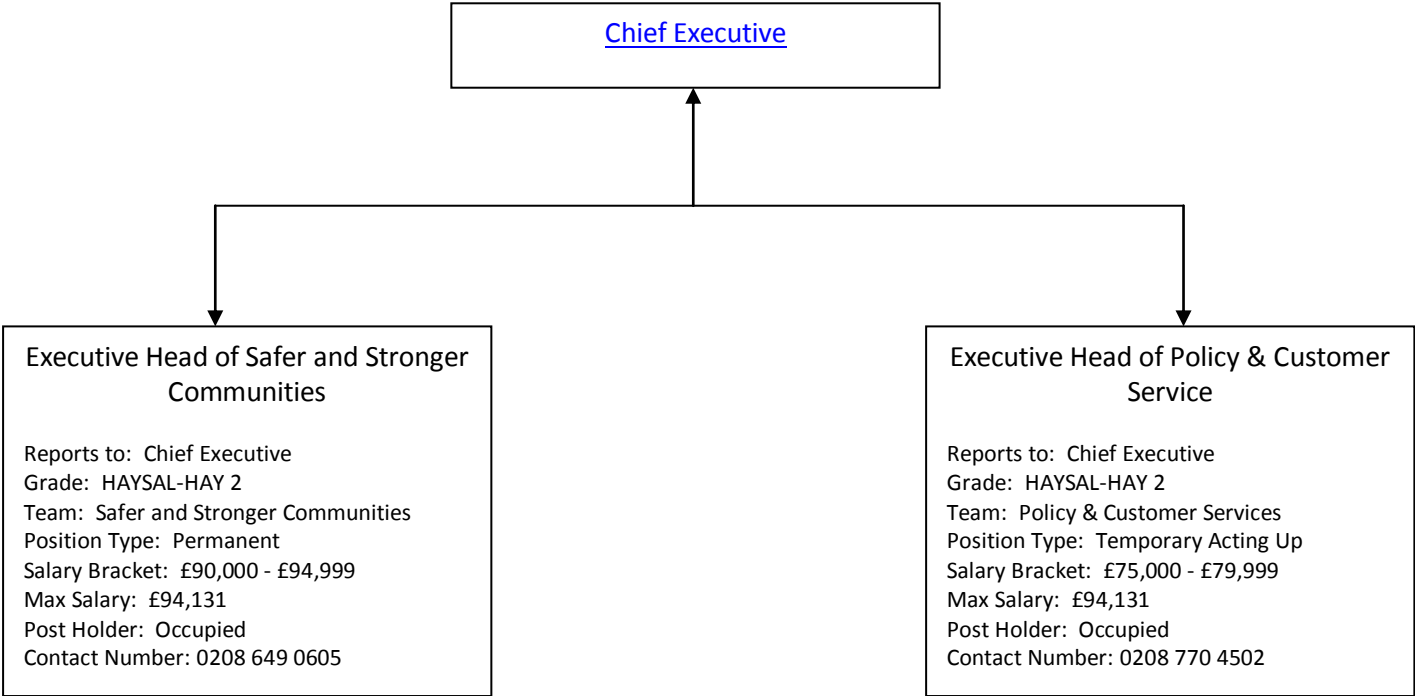
Second Tier Management Chart  
Department: Environment and Neighbourhoods



EHOS = Executive Head of Service

Contact Number: 0208 770 5000

Second Tier Management Chart  
Department: Chief Executive's Grouping



EHOS = Executive Head of Service

Contact Number: 0208 770 5000