

Sutton Families e-Newsletter

Autumn 2015

Sutton Family Information Service

The Autumn edition will provide you with details of some of the fun and low cost **activities** taking place over the October Half Term and November as well as information on **holiday childcare** and the current **consultations on Children's Centres, Libraries and Youth Services**.

About Us

We provide free information, advice and guidance on childcare, early education, activities and services for children and young people aged 0-19 years (or 25 if the young person has an additional need) and their families in the London Borough of Sutton.

We hold the only childcare database in the borough which contains comprehensive information about Ofsted-registered childcare (the Family Service Directory). By searching the directory, you can locate registered childminders, day nurseries, preschools, breakfast clubs, after school clubs and holiday schemes in your area. You can also find local leisure activities and other types of family support.

Our service is open Monday to Friday 9am to 5pm and you can contact us via:

Telephone: 020 8770 6000

Email: familyinfo@sutton.gov.uk

Online: www.sutton.gov.uk/familyinfo

Alternatively, you can come and meet one of our Outreach Advisors out in the community. We are available every Monday 9am-12pm and Thursday 2pm-5pm in the Civic Offices. No appointment necessary please just come along.



Consultations

There are currently a number of consultations taking place in Sutton which families may wish to participate in including the future of Sutton's Children's Centres, Libraries and Youth Services. For more information please visit www.sutton.gov.uk/suttonsfuture



Have your say on the future of our Children's Centres

Sutton is changing

The council has to save **£31m** from its annual budget by 2019. This is further to the **£43m** of savings already made and is due to unprecedented cuts by the government to our funding.

We have to make some hard decisions about the future of our children's centres including finding affordable ways in which these services can be delivered.

YOU SAID, WE DID

Earlier this year we asked you what you thought of our children's centres, how you use them and the services you value.

You said:

- You did not want us to reduce to one children's centre in the borough
- You wanted access to services close to where you live
- You wanted to know there was a place for you at sessions before setting off
- You valued meeting with others and accessing support, especially those with a new baby

Based on your feedback we have refined our proposal for how these centres could run in the future, and we would now like your views on the following options:

- Keeping 6 children's centres with 4 access points
- A spread of children's centres across the borough
- Making all sessions pre-bookable either online or via an app, so you can check availability in advance
- Holding a group in every centre focused on parents with new babies 0 - 6 months

Find out more about all the proposals at www.sutton.gov.uk/suttonsfuture

HAVE YOUR SAY

- Complete our survey online at www.sutton.gov.uk/suttonsfuture or at our children's centres until **27 November 2015**
- Come along to one of our **14 Have Your Say** events from **12 - 22 October 2015**. There's one at each children's centre. See overleaf for more details.

**SUTTON'S
FUTURE**

www.sutton.gov.uk/suttonsfuture
#suttonsfuture



Have your say on the future of our libraries

Sutton is changing

Unprecedented cuts by the government to local authority funding mean Sutton Council has to find £31m worth of savings from its annual budget by 2019. This is on top of £43m we have already saved since 2011. Our current budget is £148.4m.

We have to make some hard decisions about the future of our libraries to make the most of the money we have.

We are running a public consultation on the future of our libraries to make the most of the money we have.

Find out more about these options at www.sutton.gov.uk/suttonsfuture

HAVE YOUR SAY

There are a number of ways you can have your say:

- **Complete our survey** either online at www.sutton.gov.uk/suttonsfuture/haveyoursay or at one of our libraries.
- Come along to our **public meeting on Saturday 14 November** at 10am - 12noon, Europa Gallery, Sutton Central Library, Sutton, SM1 1EA. No need to book, just turn up.
- You may be one of 1,000 people who are contacted via telephone to complete the survey.

The consultation runs until **16 December 2015**.

**SUTTON'S
FUTURE**

www.sutton.gov.uk/suttonsfuture



Youth and Adolescent Services



We are holding an eight-week consultation on the future of the borough's youth and adolescent services. The consultation, from 19 October to 13 December, is on a restructured service and to explore alternative models of delivery in order to save money.

You can find out more about the proposals and fill in the questionnaire online (http://bit.ly/yaservices)

There will also be a number of opportunities for young people to get involved and have their say. This work includes 25 focus groups; 300 surveys; a series of short films on what the impact of the choices being made will mean for them; 80 selfie images showing the choices they are making; and one-to-one interviews. Young people wanting to take part in these activities should email info@participationpeople.com

Half Term Childcare

If you still need to find childcare for the October Half Term then it might not be too late!

Sutton Family Information Service can provide you with a personalised list of the Ofsted registered Childminders and Holiday Clubs offering childcare in your area.



Depending on your circumstances, there may also be financial help available to meet the costs of using registered childcare.

Using a registered childcare provider means that your child/ren can meet new friends and have fun taking part in stimulating, planned activities. Holiday clubs and childminders organise trips to local places as well as having a wide range of planned activities suitable for all ages. Many can offer you the flexibility to pick and choose the hours you need.

To receive a list of the registered childcare providers in your area or for advice on help with meeting the costs of childcare, please call us on 020 8770 6000 or email familyinfo@sutton.gov.uk



Although it is only October you may be starting to think about childcare for the festive period, especially if you are a shift worker or work at weekends.

If you require out of hours Childcare please contact us for a list of providers who offer this service.

If you cannot find childcare that suits your needs, we will do our best to help you try and find this through our free brokerage service - FIS Plus+. For more information please contact us.

Contact Us

Telephone: 020 8770 6000

Email: familyinfo@sutton.gov.uk

Online: www.sutton.gov.uk/familyinfo



Are you a parent looking for work and interested in support and advice to explore different options?

**FREE Job Club at your local Children's Centre Site
(Term Time Only)**

Mondays 9.30am - 12.00pm at Amy Johnson

Wednesdays 9.30am - 12.00pm at Cheam Pk Farm Infants

Thursdays 9.30am - 12.00pm at Tweeddale



**JOB SEARCH * CV WRITING * APPLICATIONS * INTERVIEW
SKILLS * ACCESS TO TRAINING * VOLUNTEERING**

For more details contact Caroline Watson

t: 0208 409 7249 e: caroline.watson@sutton.gov.uk





Early Years and Childcare Resource Centre

A **FREE** loan service for all childcare and educational providers in the London Borough of Sutton. **FREE** membership also available to parents/carers of children with additional needs.

The Centre stocks a wide range of good quality toys, educational and training resources to help meet the development and play needs of all children. Please visit the centre during opening hours to look at the resources and claim your free membership.



Address:

Sutton Library, Level 1A
(Opposite Children's Library)
St Nicholas Way
Sutton
SM1 1EA

Opening Hours:

Tuesday: 9.30am– 3.30pm
Wednesday: 9.30am – 2.00pm
Thursday: 12noon– 5.30pm

Please check the website for dates that the centre is closed, stock lists, membership forms, terms and conditions:

www.sutton.gov.uk/resourcecentre
or telephone 020 8770 6713



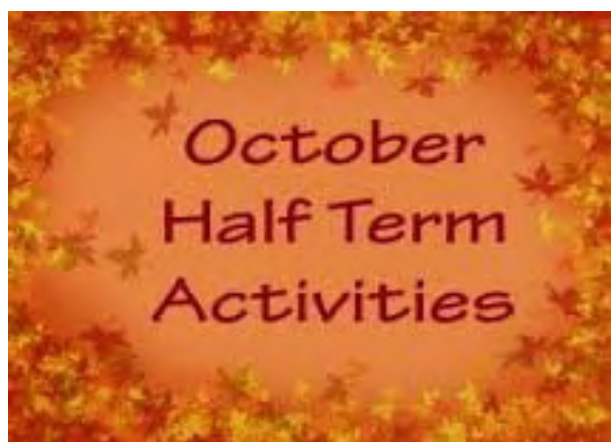
October Half Term and November Activities

Sure Start Children's Centres

These centres bring together a wide range of free services for children from birth to five years and their families.

Every children's centre is different but they will all aim to provide activities locally.

To find out where your local centre is and what activities they are running this half term please visit www.sutton.gov.uk/childrenscentres



London Borough of Sutton Libraries

There are nine libraries across the London Borough of Sutton with nearly all of them offering fun and exciting activities for children and young people this October Half Term. To find out what is happening in your local library visit:

<https://www.sutton.gov.uk/info/200168/>

More activities and staying safe this term...

As half term draws nearer the Sutton Family Information Service may have more information on activities and events taking place so please do contact us for more details.

Please note the activities included in this newsletter and sent out via FIS are for information purposes only and may be subject to change.

It is the responsibility of the parent/carer or young person to ensure that the activity, session or event is still taking place, safe, appropriate and that the staff are suitably trained and DBS checked.

Trick or Treat, Bonfires and Fireworks

Although this time of year can be lots of fun for you and your family it's not for everyone. For information and advice on Halloween, including a poster you can put in your window to request no Trick or Treaters, please visit the Met Police website:

<http://content.met.police.uk/News/Halloween-and-Bonfire-Night-celebrations/1400020403666/1257246745756>

For information, advice and safety guidance on fireworks and bonfires please visit the London Fire Brigade Website:

<http://www.london-fire.gov.uk/BonfiresAndFireworks.asp>

October Half Term & November - Honeywood Museum

WARNING!

Creepy happenings at HONEYWOOD MUSEUM

Sunday 25th October

Spooky Afternoon 2pm - 5pm

An afternoon of frighteningly good fun

Come if you dare (Come in costume to add to the fun)

Free arts and crafts, storytelling and our infamous bad
Halloween joke trail. Not to mention the creepy corridor!

All this plus info about Halloween traditions



Honeywood Walk, Carshalton SM5 3NX Tel: 020 8770 4297
email: lbshoneywood@btconnect.com www.friendsofhoneywood.co.uk
Open: Wed - Fri 11am - 5pm Sat & Sun 10am - 5pm ADMISSION FREE



Mini Honeywood Explorers HONEYWOOD MUSEUM

WINNIE GOES BATTY



Tuesday 27th Oct 11am - 1pm

Led sessions aimed at children aged 6-10 years. Each history
discovery session will have lots of exciting, fun, hands on activities
including crafts and stories

Must be pre-booked 020 8770 4297

All children must be accompanied by a responsible adult

FREE - Donations welcomed

Honeywood Walk, Carshalton SM5 3NX
email: honeywoodmuseum@sutton.gov.uk www.friendsofhoneywood.co.uk
Open: Wed - Fri 11am - 5pm Sat & Sun 10am - 5pm ADMISSION FREE



HONEYWOOD
MUSEUM



FAMILY LEARNING I Spy Arts & Crafts Family Fun at

Honeywood Museum

A FREE course for mums, dads,
grandparents, carers and
children 2+ years

Fridays 13:30-14:30
13 November to 4 December 2015

- Learn arts & crafts techniques
with your children
- Create a collage
- Make a hand & finger painting
- Use ipads creatively

To book your place please contact the
enrolment centre at Sutton College on 0208
770 5566 or Wallington Centre 0208 773
5880

"I could have
stayed all day!
Brilliant new
experience!"



www.suttoncollege.ac.uk
familylearning@scola.ac.uk



Museum Mummies

Mother and Toddler sessions
for 2yr to 4yr olds

Dads, Grannies, Grand-dads and carers
just as welcome

Specially devised activity sessions that introduce the
very young to history through play

Features play activities, simple crafts, stories and songs

9.30am - 11am

24th November - Perfect Patterns



All children must be accompanied
by a parent or guardian
£1.50 per child
Pre-booking required



HONEYWOOD
MUSEUM

Honeywood Walk, Carshalton SM5 3NX Tel: 020 8770 4297
email: honeywoodmuseum@sutton.gov.uk www.friendsofhoneywood.co.uk
Open: Wed - Fri 11am - 5pm Sat & Sun 10am - 5pm



Trick or treat crafts

Thursday 29th October 1-4pm
@ Whitehall



Join us at Whitehall for a selection of Halloween crafts.
Make your own trick or treat basket and Halloween masks.

Suitable for children ages 4+
Drop in session
£3 per child

For more information, please ring
020 8770 5670
whitehallmuseum@sutton.gov.uk
Whitehall, 1 Maiden Rd, Cheam, SM3 8QD



Museums at Night

Friday 30th October 5.30-9pm
@ Whitehall



Explore Whitehall lit by candlelight. There will be spooky stories in the attic (6pm and 8pm), Halloween crafts in the Tudor bedroom and a kids trail around the house with ghoulish treats for those who complete it!

FREE ENTRY



For more information, please ring
020 8770 5670
whitehallmuseum@sutton.gov.uk
Whitehall, 1 Maiden Rd, Cheam, SM3 8QD



Seriously Spooky Skulls

Saturday 31st October
12-3pm
@ Whitehall



Have fun at Whitehall with a series of crafts inspired by the Mexican "Día de los Muertos" festival. There will be a chance to make felt sugar skulls, sugar skull paperweights and even sugar skull masks.

Suitable for children ages 4+
Drop in session
£3 per child

For more information, please ring
020 8770 5670
whitehallmuseum@sutton.gov.uk
Whitehall, 1 Maiden Rd, Cheam, SM3 8QD



November Activities at Whitehall

Monday 2nd November 2015

Whitehall Whippets - 9.30 to 11 am.
Monthly activity sessions for families with very young children (aged 3 and under). To include a range of activities, from singing to crafts and house trails. This month's theme is Hey Diddle Diddle. £1.50 per child. Booking is essential on 020 8770 5670.

Sunday 15th November 2015

Ooo Twit Twoo - 1 to 4 pm
An afternoon of owl inspired crafts. Make your own moveable paper owl with flapping wings or a super crafty felted owl. Drop in session £3 per child ages 4 plus.

www.friendsofwhitehallcheam.co.uk

October Half Term 2015 Nature Activities

Sutton Ecology Centre



Halloween Trail

Monday 26 October 10am-2pm

Follow our haunting Halloween Trail around the Ecology Centre. Join in with some fun Halloween crafts.

Cost: £3 per child ages 3yrs⁺.

No need to book, just turn up any time.

Go Wild @ Manor Park

Tuesday 27 October 11am-2pm

Meet us outside Manor Park Café to hire one of our Nature Discovery Backpacks to take off for your own Wild Adventure.

Cost: £3 per child.

Suitable for: families.

No need to book. £10 returnable deposit for backpack hire.



If you have any enquiries please leave a message at 020 8770 5820 or email biodiversity@sutton.gov.uk



October Half Term - The Sports Village



The Sports Village October Half Term holiday camp information is here!

This half term our tennis and multi-sports camps run from Monday 26th to Friday 30th October for children aged between 5 and 12 years.

The daily schedule for this camp will be:

8:30am-9:00am: Drop off

9:00am-12:30pm: Tennis camp

12:30pm-1:30pm: Supervised lunch

1:30pm-5:00pm: Multi-sports camp

5:00pm-5:30pm: Pick up

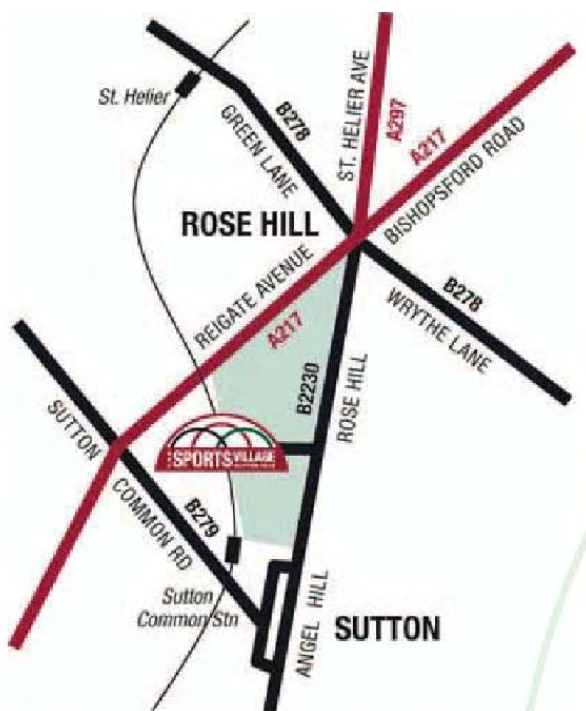
Prices

If you are looking for a morning or afternoon session the cost is £21.00. Morning sessions run from 9:00am till 12:30pm and afternoon sessions run from 1:30pm till 5:00pm.

A full day costs £33.00 and includes a supervised lunch between 12:30 and 1:30pm.

A full week (Monday to Friday) costs £149.00

To book and pay please contact reception on 020 8641 6611 or email Mhari on mhari.neish@thesportsfoundation.org.uk



www.thesportsvillage.org.uk

October Half Term - Crystal Palace FC Foundation

Crystal Palace Football Club Foundation - Autumn Term and October Half Term

The following sessions will be running in the London Borough of Sutton:

October Half Term

Carshalton Boys School, Muschamp Road, Carshalton, SM5 2SE

Monday 26th October to Friday 30th October 2015

£12 a day or £55 a week

Saturday Morning

David Weir Leisure Centre, Middleton Road, Carshalton SM5 1SL

24th October to 12th December 2015

£32 for 8 weeks

To book call 020 8768 6047 or visit www.cpfoundation.org



CRYSTAL PALACE
Football Club
FOUNDATION
One Club. One Community.
Registered Charity No. 1129878

Sutton

OCTOBER HEALTHY LIFESTYLES COURSE

JOIN US FOR FUN ACTIVITIES THIS HOLIDAY

MONDAY 26TH AND TUESDAY 27TH OCTOBER (10AM-2PM)
GREEN WRYTHE PRIMARY SCHOOL
GREEN WRYTHE LN, CARSHALTON, SURREY SM5 1JP

WEDNESDAY 28TH OCTOBER (10AM-2PM)
SELHURST PARK STADIUM TOUR
WHITEHORSE LN, LONDON SE25 6PU

THURSDAY 29TH AND FRIDAY 30TH OCTOBER (10AM-2PM)
CARSHALTON BOYS SCHOOL
WINCHCOMBE RD, CARSHALTON, SURREY SM5 1RW

ALL COURSES ARE FREE! LIMITED AVAILABILITY. INVITE ONLY
PLACES WILL BE ON A FIRST COME FIRST SERVED BASIS
BOOKING DETAILS ARE ON REVERSE
FOR ANY ADDITIONAL INFORMATION PLEASE CONTACT
PAULMITCHELL@CPFCFOUNDATION.ORG

CRYSTAL PALACE
Football Club
FOUNDATION
One Club. One Community.
Registered Charity No. 1129878

HEALTHY HALF-TERM

CHILDREN CAN ATTEND MORE THAN ONE DATE

FORENAME: _____ SURNAME: _____
ADDRESS: _____

POSTCODE: _____
PARENT/CARER CONTACT TEL: _____
SECONDARY CONTACT TEL: _____
EMAIL: _____
GENDER: _____ AGE: _____ D.O.B: _____
SCHOOL ATTENDED: _____

SESSIONS ATTENDING: **ALL COURSES RUN FROM 10AM-2PM**

☐ Monday 26th October 2015 ☐ Tuesday 27th October 2015
Green Wrythe Primary School, Green Wrythe Ln, Carshalton, Surrey SM5 1JP

☐ Wednesday 28th October 2015 ☐ Friday 30th October 2015
Selhurst Park Stadium Tour, Whitehorse Ln, London SE25 6PU
Carshalton Boys School, Winchcombe Rd, Carshalton, Surrey SM5 1RW

ARE THERE ANY MEDICAL CONDITIONS OR SPECIAL NEEDS THAT WE NEED TO BE MADE AWARE OF? _____

Children need to bring their own packed lunch and drinks.

Please return this form to:
CRYSTAL PALACE F.C. FOUNDATION, Selhurst Park, London, SE25 6PU

Parents will be expected to sign an in and out process for their children on all courses

☐ PLEASE TICK THIS BOX IF YOU GIVE CONSENT FOR YOUR CHILD TO MAKE THEIR OWN WAY HOME

☐ DO YOU OBJECT TO YOUR CHILD HAVING THEIR PHOTOGRAPH TAKEN?
(FOR USE IN CRYSTAL PALACE F.C. FOUNDATION PUBLICATIONS AND PUBLICITY)

Your personal information will be held and used in accordance with the Data Protection Act 1998. The Crystal Palace FC Foundation will not disclose such information to any unauthorised person or body but where appropriate will use such information in carrying out its various functions and services. The Crystal Palace FC Foundation may also use this data in connection with the prevention of fraud or other crime. Crystal Palace FC Foundation is a registered charity No. 1129878.

 @FOUNDATIONCPFC

WWW.CPFCFOUNDATION.ORG

 @CPFC_FOUNDATION

CPFC Foundation is committed to Safeguarding all children and young people on its courses. All CPFC Foundation coaches are DBS compliant.

Half Term Activity

Smashing Pumpkins



**Thursday 29th &
Friday 30th
October**

1.30—3pm

At Carshalton Community
Allotment SM5 2PW

Join us for our annual
pumpkin carving workshop:

- Choose, design & carve your own pumpkin to take home
- Help with Autumn planting & harvest produce to take home

**Price: £3 per child or £7.50 for family of 3
children (aged 6 and over)**

020 8404 1522

beanstalk@ecolocal.org.uk

Book online:

www.localfoodnetwork.org.uk

the Beanstalk Project



@ecolocal



@ecolocalfood

ecolocal

Sutton Life Centre

HALLOWEEN COMMUNITY FUN DAY



Thursday 29th October 2015

10am – 4pm

Sutton Life Centre

24 Alcorn Close, Sutton, SM3 9PX



Visit our very own
Haunted House!

Prizes for the
scariest fancy dress!

FREE Dance
& Drama
Workshops!

Face
Painting!



Tombola
& Stalls!



Spooky
Storytime!

Crafts &
Activities!



METROPOLITAN
POLICE



020 8644 9696



lifecentre.library@sutton.gov.uk



Library @ the Life Centre



Half Term At David Weir Leisure Centre Junior Holiday Activities



Multisport – Gymnastics, Athletics and Playworld
Fancy participating in a variety of activities? This is for you!

Date: Monday 26th October 2015

Time: 10am – 3pm

Ages: 5 – 10 years

Cost: £16.50

Athletics

Do you think that you can run the fastest, jump the highest or throw the furthest?

Date: Wednesday 28th October 2015

Time: 10am – 3pm

Ages: 5 – 15 years

Cost: £16.50

For both the above, please ensure that your child brings a packed lunch with them.
Appropriate clothing and trainers + a bottle of water.



Gymnastics

Spring into action with our Tumbling Allstars Gymnastics experience

Date: Friday 30th October 2015

Time: 9am – 12noon

Ages: 5 – 15 years

Cost: £12.50

Please ensure that your child brings in a bottle of water. This activity will be conducted in bare feet but please ensure that shorts/leggings and t-shirts are worn or leotards. Long hair should be tied back and no jewellery should be worn.

Please book in advance at Reception or call us on 0208 641 9480



Swimming & Trampolining

Swim lessons – Crash courses:

Would you like your children to improve their swimming?

Book them into the crash courses which is 30 minutes of fun filled swimming lessons, everyday over the October half term.

Starting Monday 26th - Friday 30th October

- Beginners 3-4 years 10.00-10.30am
- Beginners 5+ years 10.30-11.00am

For more information please call reception on 0208 644 2891

CHEAM

Trampolining course:

Like trampolining?

Try our courses on Wednesday and Thursday 1.00pm – 3.00pm

WESTCROFT

Fit for Sport:

Looking for a fun filled day for your children this half term?

Why not try our kid's camp at Westcroft?

- Monday – Friday
- 8.00am – 6.00pm

Activities included are: Swimming, Team Games, Trampolining and many more.

WESTCROFT

Inflatable sessions:

Stuck for something to do this half term?

Come along to our wet and wild session at Cheam and Westcroft, enjoy our new inflatable.

CHEAM

- Monday – Friday 1.30pm - 2.50pm
- Saturday 2.00pm - 3.20pm

Prices:

- Child: £2.65
- Adult £4.70

If you have a membership then some prices will be cheaper

WESTCROFT

- Every day 2pm-3.20pm (including weekends)





October half term fun at The Phoenix Centre

Play Active

5-10 years 9.30-11.30am

£3 per child.

Wednesday 28th and Friday 30th October

Football

5-10 years 1:00-2:00pm

£2 per child

Thursday 29th October

Table Tennis

5-10 years

3:30pm-4:30pm

£2.00 per child

Monday 26th October

Sessions run from 26th October to 30th October

Places are limited and can be booked in advance either at reception or online at

www.everyoneactive.com

The Phoenix Centre,
Mollison Drive, Wallington, Surrey, SM6 9NZ
02087736060

October Half Term - Sessions for Children with Disabilities

Special Sessions for Children and Young People with Additional Needs and their Families

Date	Activity	When?	Where?	How much?	Who?
Tuesday 27th October *Swim Rules: <ul style="list-style-type: none"> ➢ Swimmers who have previously completed a 25m swim test will not need to repeat ➢ 2 non swimmers or under 8 to every 1 competent adult swimmer (18+) ➢ No snorkels or masks to be worn ➢ No bombing, fighting or dunking ➢ If wishing to go past the red line, they must swim 25m on their front *Inflatable Rules <ul style="list-style-type: none"> ➢ No swimming under the inflatable ➢ Feet first down the slide ➢ Once off the must move away from the inflatable 	Inflatable Swimming Session 	12.30 – 1.30pm	Westcroft Leisure Centre	Member - £1 per child Non-member - £2.60 per child	ALL Ages This is a Turn Up session
Wednesday 28th October	Waves Swimming Session	6.30 – 8 pm	Westcroft Leisure Centre	Member - £2.35 per child Non-member - £4.65 per child	ALL Ages This is a Turn Up session
Thursday 29th October DID YOU KNOW? There is ALSO the opportunity to do ALL 3 of these sessions for just £6.50 per participant!	Trampolining	3 – 4 pm *Parent or carer is required to stay	The Phoenix Centre	£4 for the first child £2 per sibling	5 + years
	Table Tennis	3 – 5 pm *Parent or carer is required to stay		£2 per participant	ALL Ages
	Badminton			£2 per participant	ALL Ages

Please see: www.suttonparentsforum.org.uk/ for more information



October Half Term - Young Carer's Exhibition

CREATE ARTS.ORG.UK IDENTITY

**AN EXHIBITION OF PHOTOGRAPHY, PRINTS
AND MUSIC CREATED BY YOUNG CARERS**

WITH SUTTON CARERS CENTRE AND ARTS CHARITY, CREATE

1pm-5pm, 27 October 2015
Sutton Central Library, St Nicholas Way, Sutton SM1 1EA

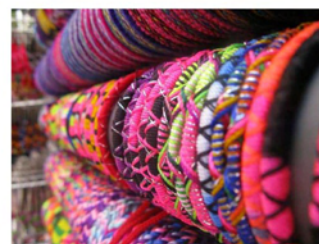
**For more information contact
Sutton Carers Centre: 020 8296 5611**

This project is funded by The Queen's Trust and BBC Children in Need



**SUTTON
CARERS
CENTRE**

CARING FOR YOU AS YOU CARE FOR OTHERS



October Half Term & November - Sutton Parents Forum



October Half-Term Holiday Activity Session

Tuesday 27th October 2015

1:30pm – 6.30pm

Cheam Resource Centre

£15

Activities available:

- Table Tennis
- Pool
- Football Sessions at GOALS
- Cookery
- Inflatable Swimming Session (12.30 – 1.30 optional and includes transport to afternoon session)
- Menu Planning and shopping for evening meal
- Badminton and outdoor games
- Indoor activities and games

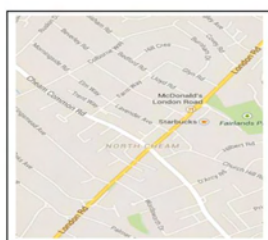


Holiday Activity Session Information

- Delivered by qualified and trained specialist staff
- DBS checked staff
- Participants choose activities to take part in
- Refreshments provided during the session
- Evening meal selected and cooked by participants
- Development of social and communication skills
- Development of gross and fine motor skills
- Development of independent life skills

Booking information:

**To secure your booking, please book by
Thursday 1st October 2015.**



**Cheam Resource Centre,
671 London Road,
Cheam,
SM3 9DL**

To book a place please contact Laura

Tel: 07469923310 or

Email: laura@suttonparentsforum.org

SUTTON PARENTS FORUM EVENT – NOVEMBER 3RD 2015

MORNING SESSION

The Autistic Spectrum from a person not just a textbook!

We are pleased to invite you to a morning with Robyn Steward. Robyn is 28 and will talk about her life on the Autistic Spectrum.



This is an engaging and interactive session offering lots of opportunities for questions as well as advice on strategies, interventions and tools.

Robyn started her career because the

educational professionals she encountered in school did not understand Autism. She wants to help people understand and in turn have a positive effect on the lives of children and young people; go to her website www.robysteward.com for more information.

AFTERNOON SESSION

SEN Reforms – where are we now?

Colin Pates will give an update on how the Children and Families Act 2014 is being implemented in Sutton. This session will cover Sutton's plans for the coming year and include the transfer process to Education, Health and Care Plans.

This will be followed by a Questions and Answers session and Colin has offered to stay afterwards to run a 'surgery' to give parent carers the opportunity for an individual discussion.

SUTTON PARENTS FORUM EVENT – NOVEMBER 3RD 2015

9.30am	Coffee
10.00am	Robyn Steward
12.30pm	Lunch
1.15pm	SEN Update with Colin Pates
2.30pm	Finish

Venue : Strawberry Lodge Conference Centre
Strawberry Lane, Carshalton, SM5 2NQ

For more information or to send in specific questions for either Robyn or Colin

Please check our website

<http://www.suttonparentsforum.org.uk/>

Or call 020 3701 2175 or email
suttonparentsforum@outlook.com



CARSHALTON FIREWORKS 2015 SAT 7TH NOVEMBER



ROUNDTABLE
WALLINGTON &
CARSHALTON ROUND TABLE

RADIO ST HELIER
ROADSHOW FROM 5PM

NEW THIS YEAR

We are proud to present

LIVE MUSIC by the
THE ANTIDOTE BAND

on stage from 5:15pm

Artwork by Chloe Knight aged 10 from Holy Trinity (C of E) Junior School, Wallington

HELPING LOCAL CHARITIES

CARSHALTON PARK
GATES OPEN 5PM – DISPLAY 7PM
ADMISSION BY PROGRAMME



find us on
Facebook

£5 UP TO 6TH NOVEMBER
& £7.50 ON THE 7TH NOVEMBER
www.carshaltonfireworks.org.uk