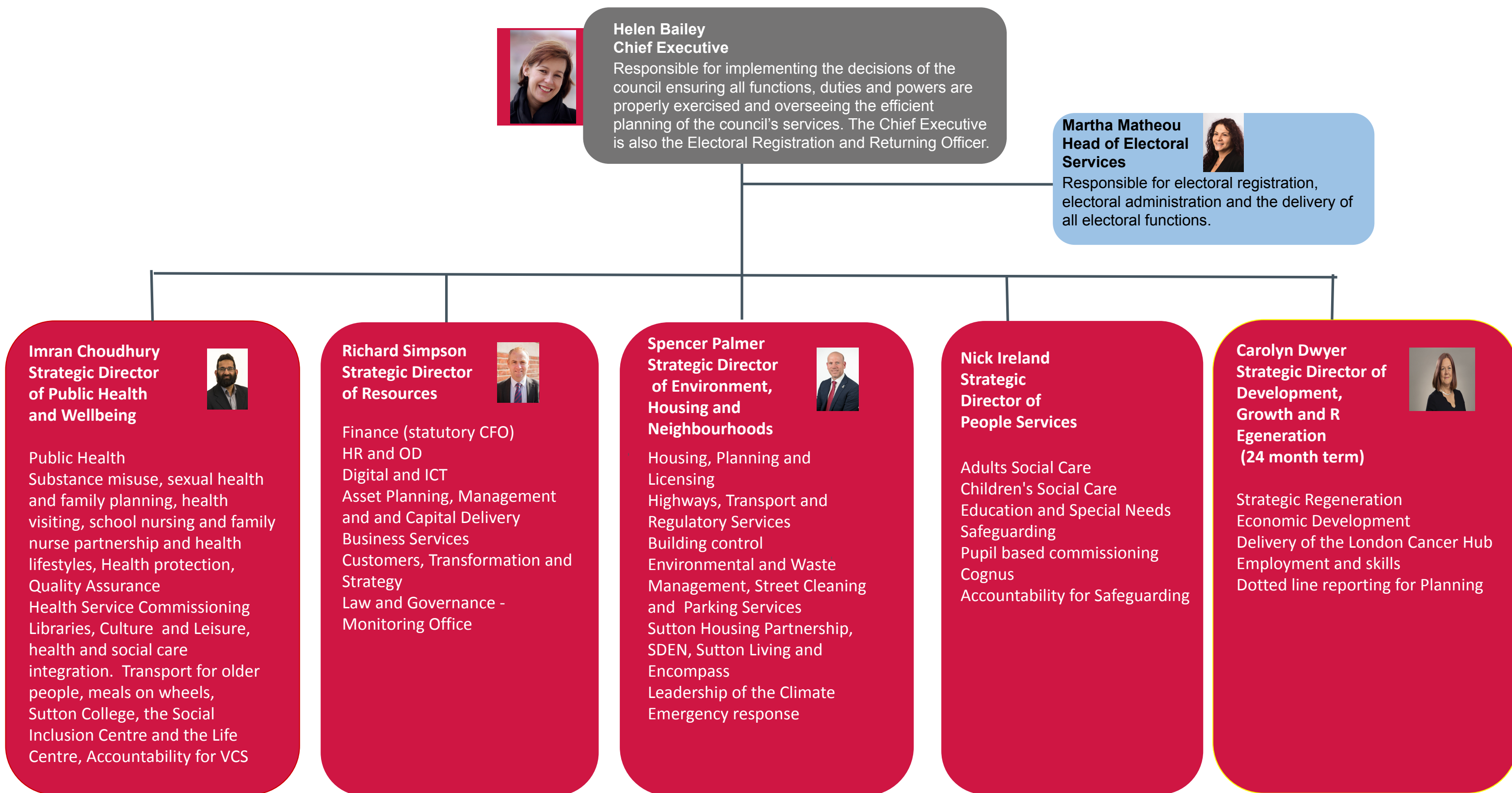
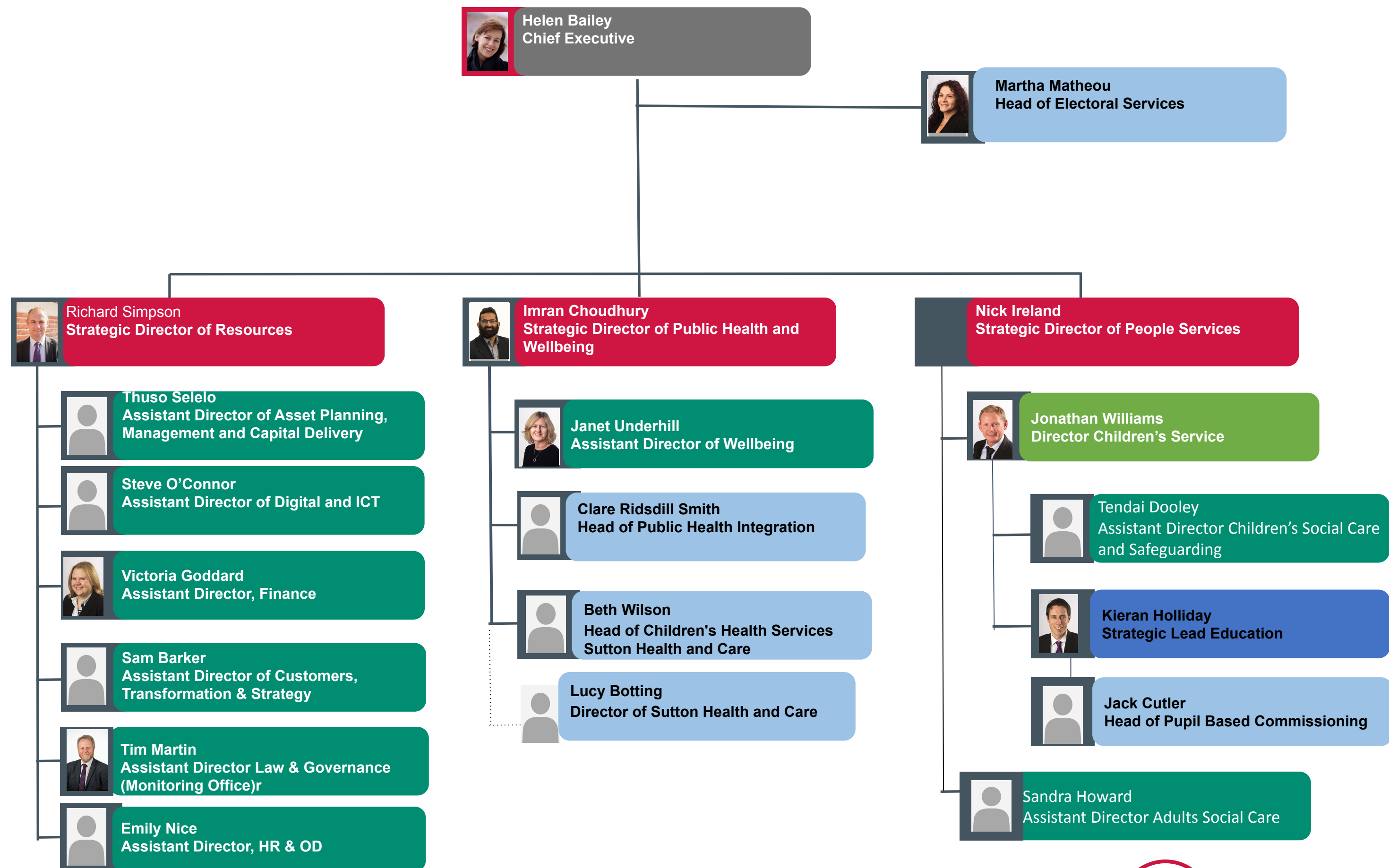


London Borough of Sutton – Structure Chart January 2024

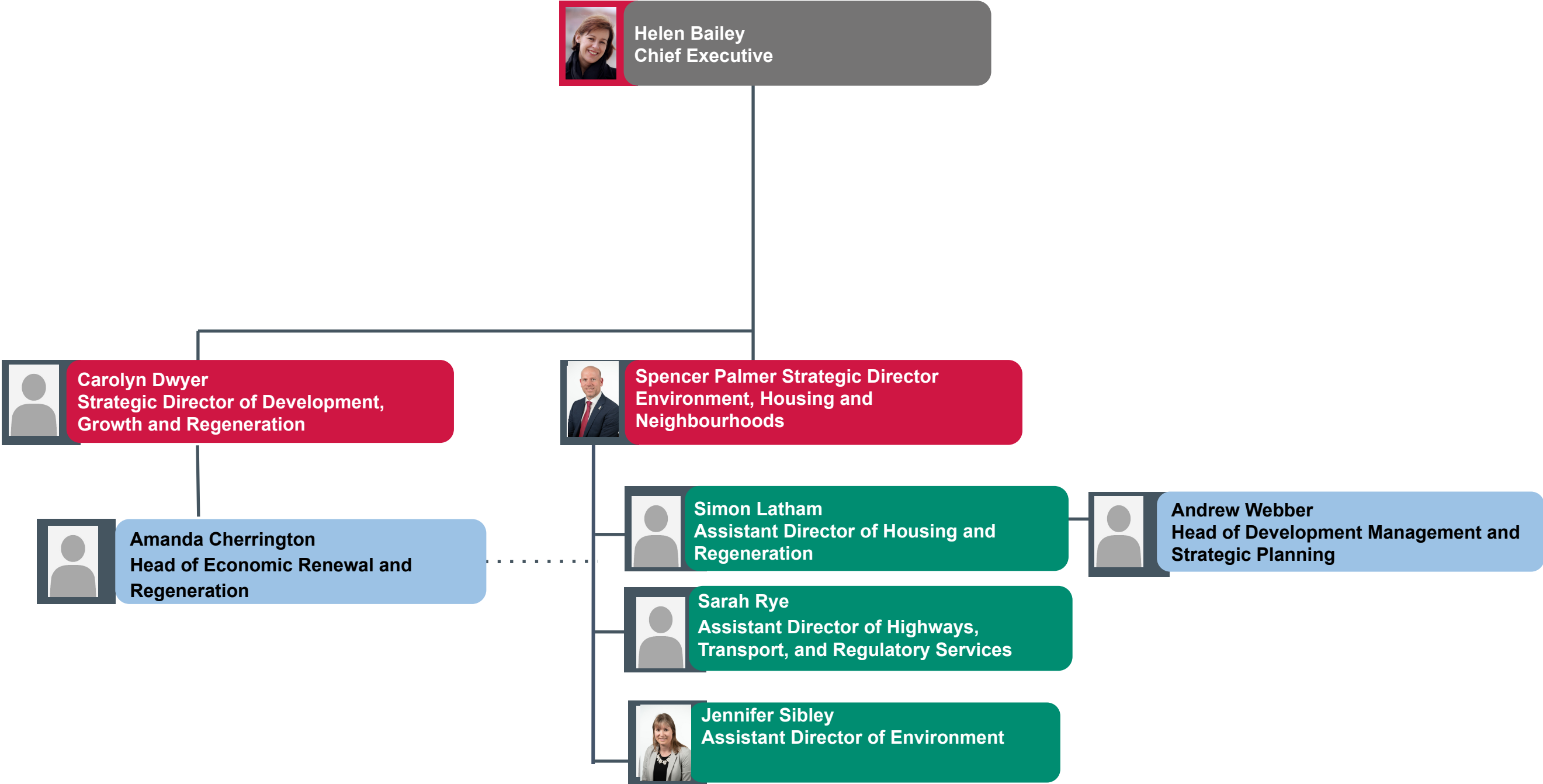


Ambitious for Sutton - Having the Right Capacity to Deliver

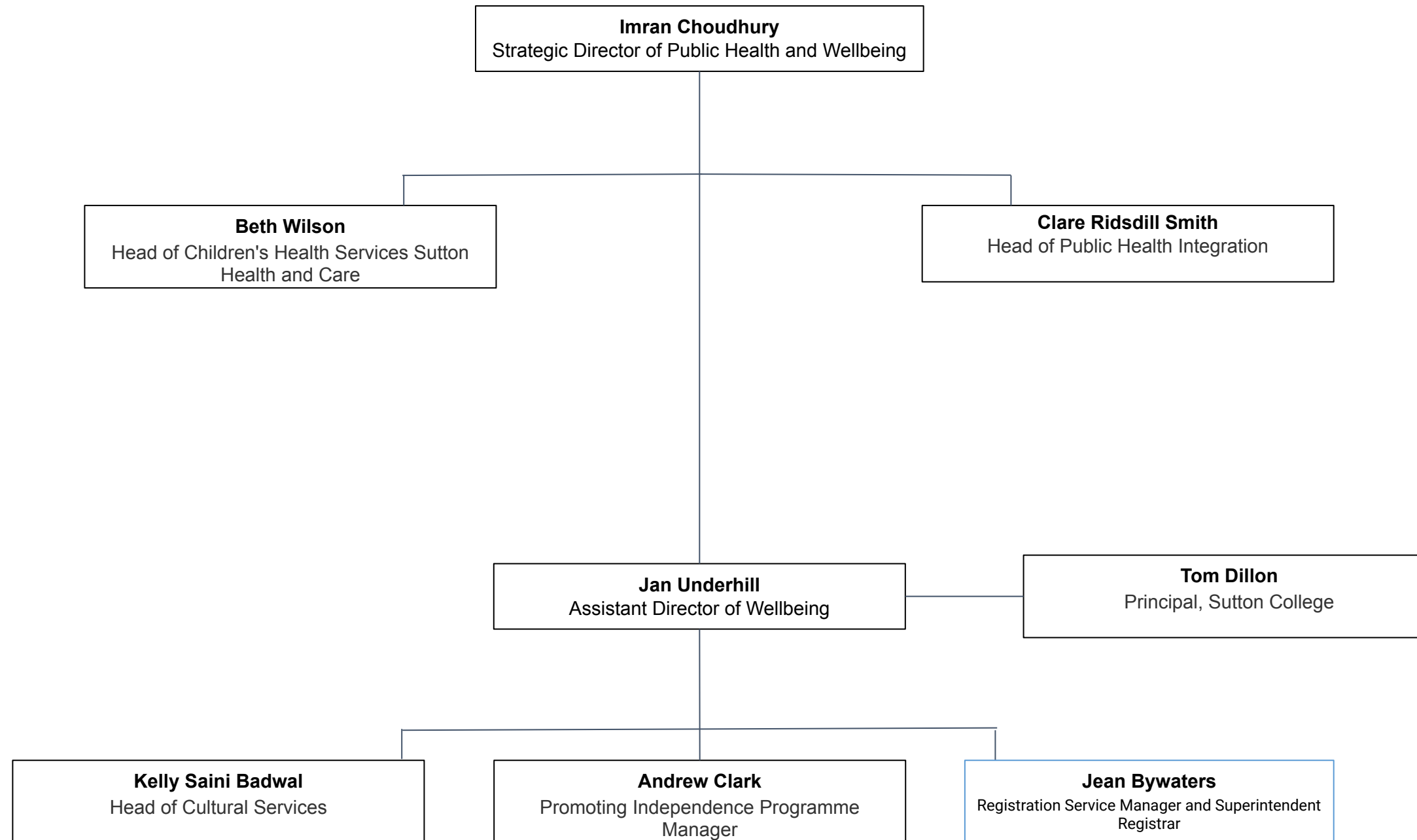
London Borough of Sutton – Organisational January 2024 (1 of 2)



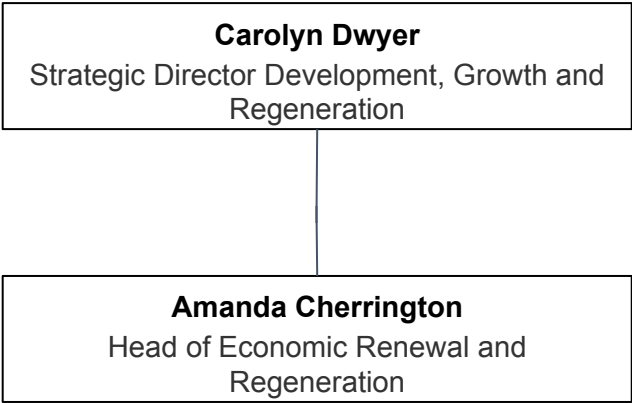
London Borough of Sutton – Organisational January 2024 (2 of 2)



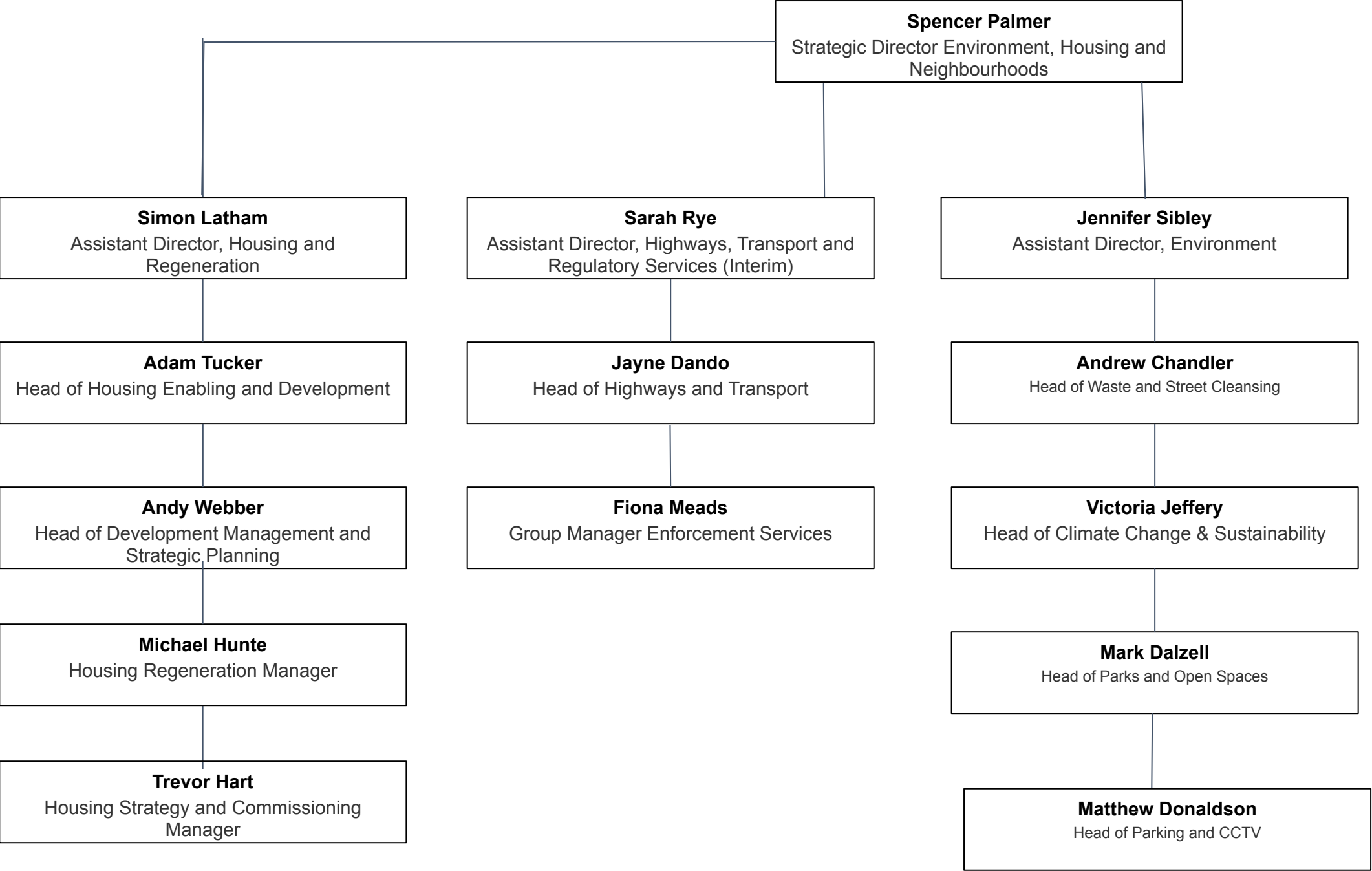
Public Health and Wellbeing



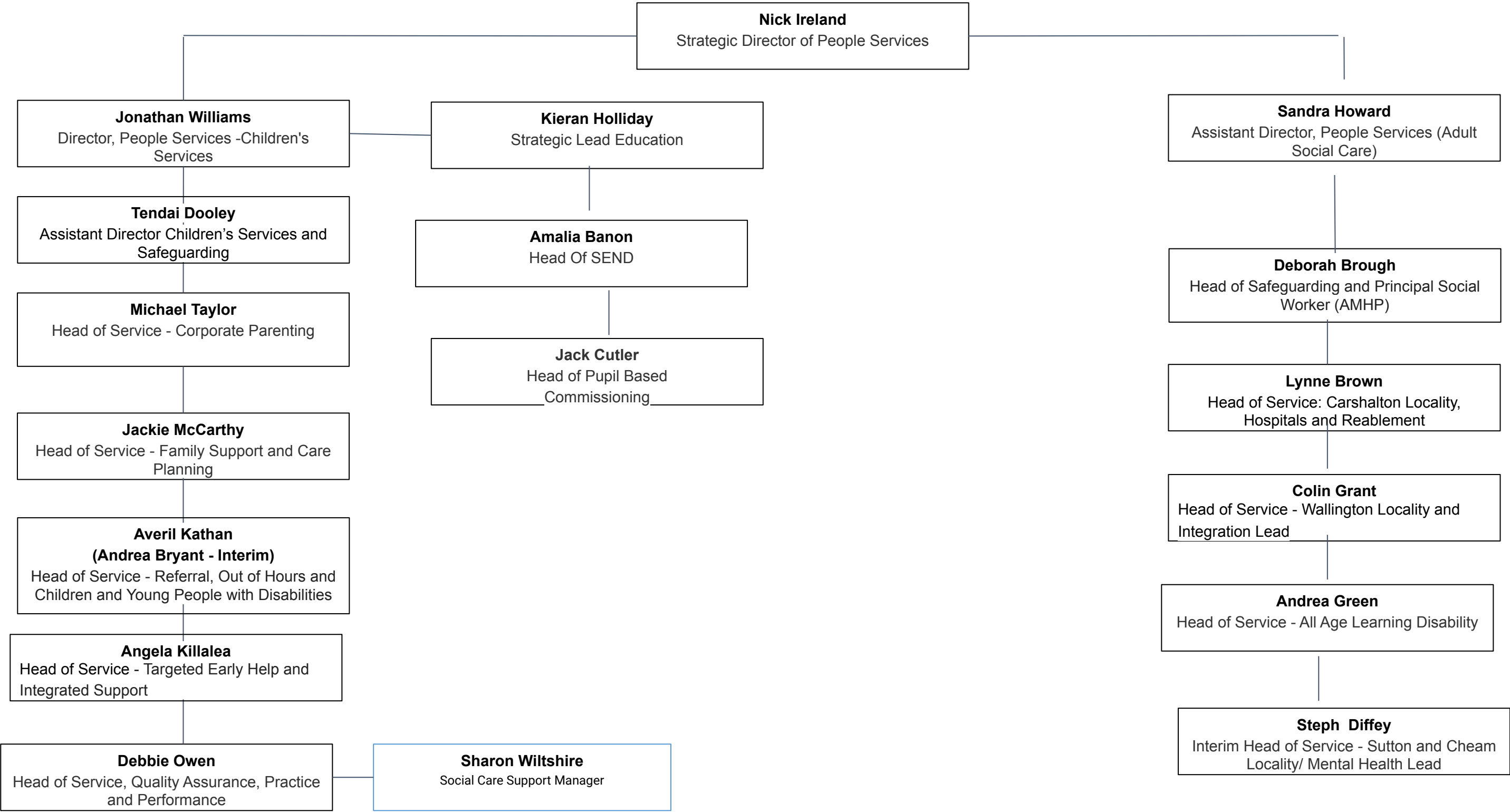
DEVELOPMENT, GROWTH AND REGENERATION



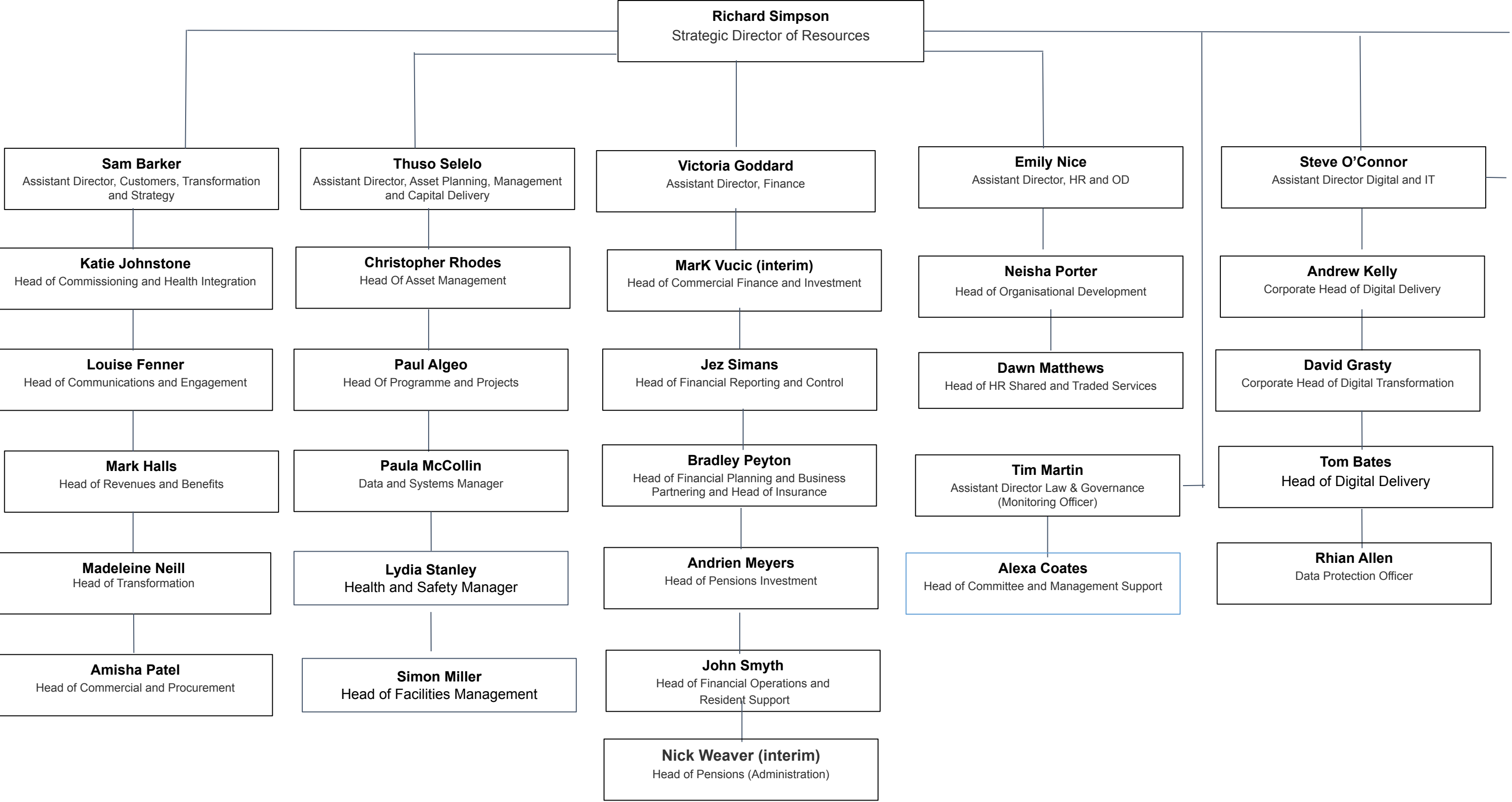
ENVIRONMENT, HOUSING and NEIGHBOURHOODS



PEOPLE SERVICES DIRECTORATE



RESOURCES DIRECTORATE



Helen Bailey - Chief Executive - helen.bailey@sutton.gov.uk

Imran Choudhury - Strategic Director of Public Health and Wellbeing - imran.choudhury@sutton.gov.uk

Jan Underhill - Assistant Director of Wellbeing - jan.underhill@sutton.gov.uk

Clare Ridsdill Smith - Head of Public Health Integration - clare.ridsdill-smith@sutton.gov.uk

Beth Wilson - Head of Children's Health Services Sutton Health and Care - beth.wilson@sutton.gov.uk

Lucy Botting - Director of Sutton Health and Care - l.botting@nhs.net

Richard Simpson - Strategic Director of Resources - richard.simpson@sutton.gov.uk

Thuso Selelo - Assistant Director of Asset Planning, Management and Capital Delivery - thuso.selelo@sutton.gov.uk

Steve O'Connor - Assistant Director of Digital and ICT - steve.oconnor@kingston.gov.uk

Victoria Goddard - Assistant Director of Finance - victoria.goddard@sutton.gov.uk

Sam Barker - Assistant Director of Customers, Transformation and Strategy - sam.barker@sutton.gov.uk

Tim Martin - Assistant Director Law & Governance (Monitoring Officer) - tim.martin@sutton.gov.uk

Emily Nice - Assistant Director of HR and OD - emily.nice@sutton.gov.uk

Spencer Palmer - Strategic Director of Environment, Housing and Regeneration - spencer.palmer@sutton.gov.uk

Simon Latham, - Assistant Director of Housing and Regeneration - simon.latham@sutton.gov.uk

Sarah Rye - Assistant Director of Highways, Transport, and Regulatory Services - sarah.rye@kingston.gov.uk

Jennifer Sibley - Assistant Director of Environment - jennifer.sibley@sutton.gov.uk

Andy Webber - Head of Development Management and Strategic Planning - andy.webber@sutton.gov.uk

Victoria Jeffery - Head of Climate Action and Sustainability - victoria.jeffery@sutton.gov.uk

Nick Ireland- Strategic Director of People Services - nick.ireland@sutton.gov.uk

Jonathan Williams - Director Children's Services- jonathan.williams@sutton.gov.uk

Tendai Dooley - Assistant Director Children's Services and Safeguarding - tendai.dooley@sutton.gov.uk

Sandra Howard- Assistant Director Adult Social Care - sandra.howard@sutton.gov.uk

Kieran Holliday - Strategic Lead Education- kieran.holliday@sutton.gov.uk

Jack Cutler - Head of Pupil Based Commissioning - jack.cutler@sutton.gov.uk

Carolyn Dwyer - Strategic Director of Development, Growth and Regeneration - carolyn.dwyer@sutton.gov.uk

Amanda Cherrington - Head of Economic Renewal and Regeneration - amanda.cherrington@sutton.gov.uk

Martha Matheou - Head of Electoral Services - martha.matheou@sutton.gov.uk