

London Borough of Sutton – Structure Chart June 2023



Helen Bailey
Chief Executive
 Responsible for implementing the decisions of the council ensuring all functions, duties and powers are properly exercised and overseeing the efficient planning of the council's services. The Chief Executive is also the Electoral Registration and Returning Officer.



Martha Matheou
Head of Electoral Services
 Responsible for electoral registration, electoral administration and the delivery of all electoral functions.



Imran Choudhury
Strategic Director of Public Health and Wellbeing



Public Health
 Substance misuse, sexual health and family planning, health visiting, school nursing and family nurse partnership and health lifestyles, Health protection, Quality Assurance
 Health Service Commissioning
 Libraries, Culture and Leisure, health and social care integration. Transport for older people, meals on wheels, Sutton College, the Social Inclusion Centre and the Life Centre, Accountability for VCS

Richard Simpson
Strategic Director of Resources



Finance (statutory CFO)
 HR and OD
 Digital and ICT
 Asset Planning, Management and and Capital Delivery
 Business Services
 Customers, Transformation and Strategy
 Law and Governance -
 Monitoring Office

Spencer Palmer
Strategic Director of Environment, Housing and Neighbourhoods



Housing, Planning and Licensing
 Highways, Transport and Regulatory Services
 Building control
 Environmental and Waste Management, Street Cleaning, Parking Services and Community Safety.
 Sutton Housing Partnership, SDEN, Sutton Living and Encompass
 Leadership of the Climate
 Emergency response

Guy Van Dichele
Interim Strategic Director of People Services



Adults Social Care
 Children's Social Care
 Education and Special Needs
 Safeguarding
 Pupil based commissioning
 Cognus
 Accountability for Safeguarding

Carolyn Dwyer
Strategic Director of Development, Growth and Regeneration (24 month term)

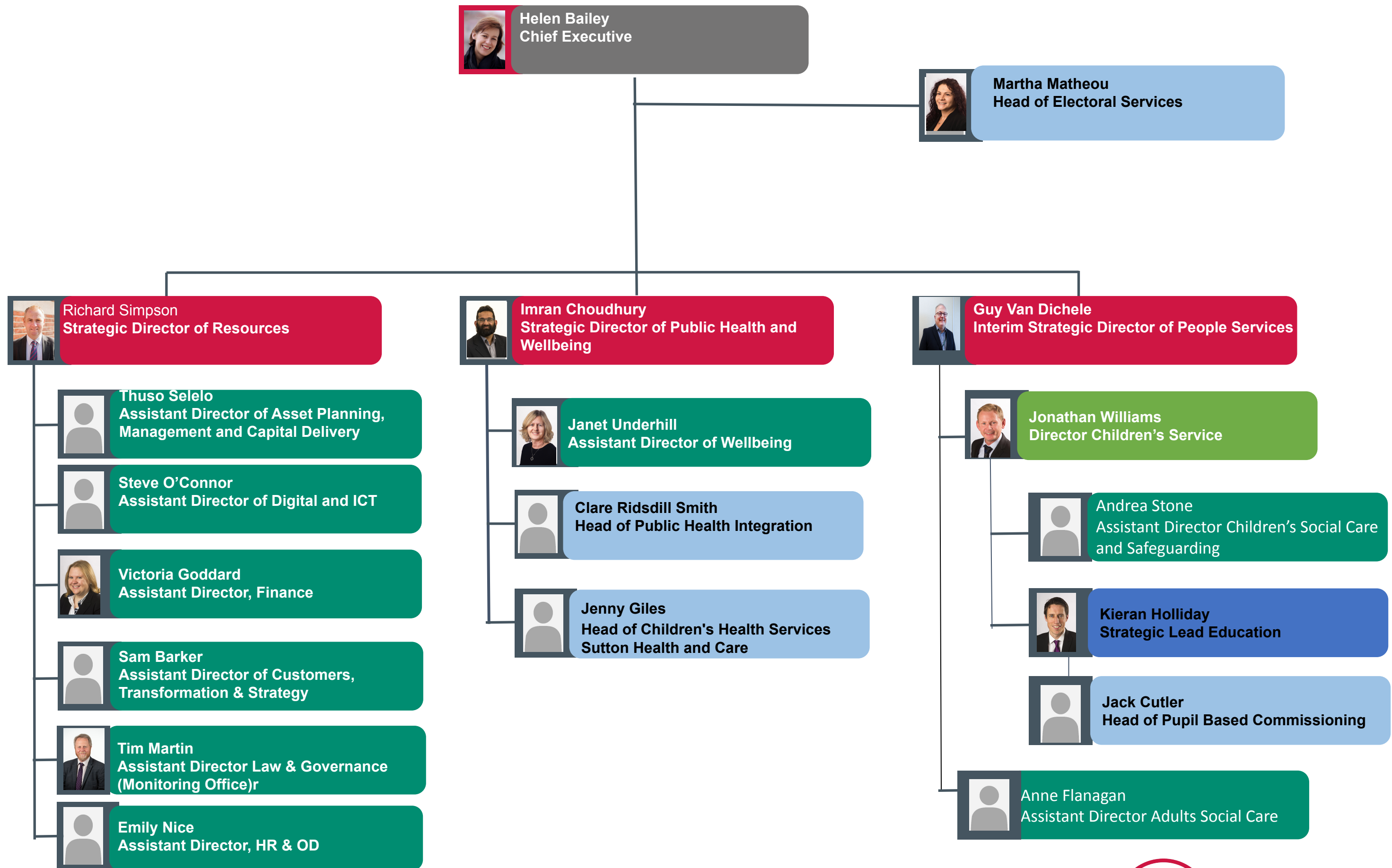


Strategic Regeneration
 Economic Development
 Delivery of the London Cancer Hub
 Employment and skills
 Dotted line reporting for Planning

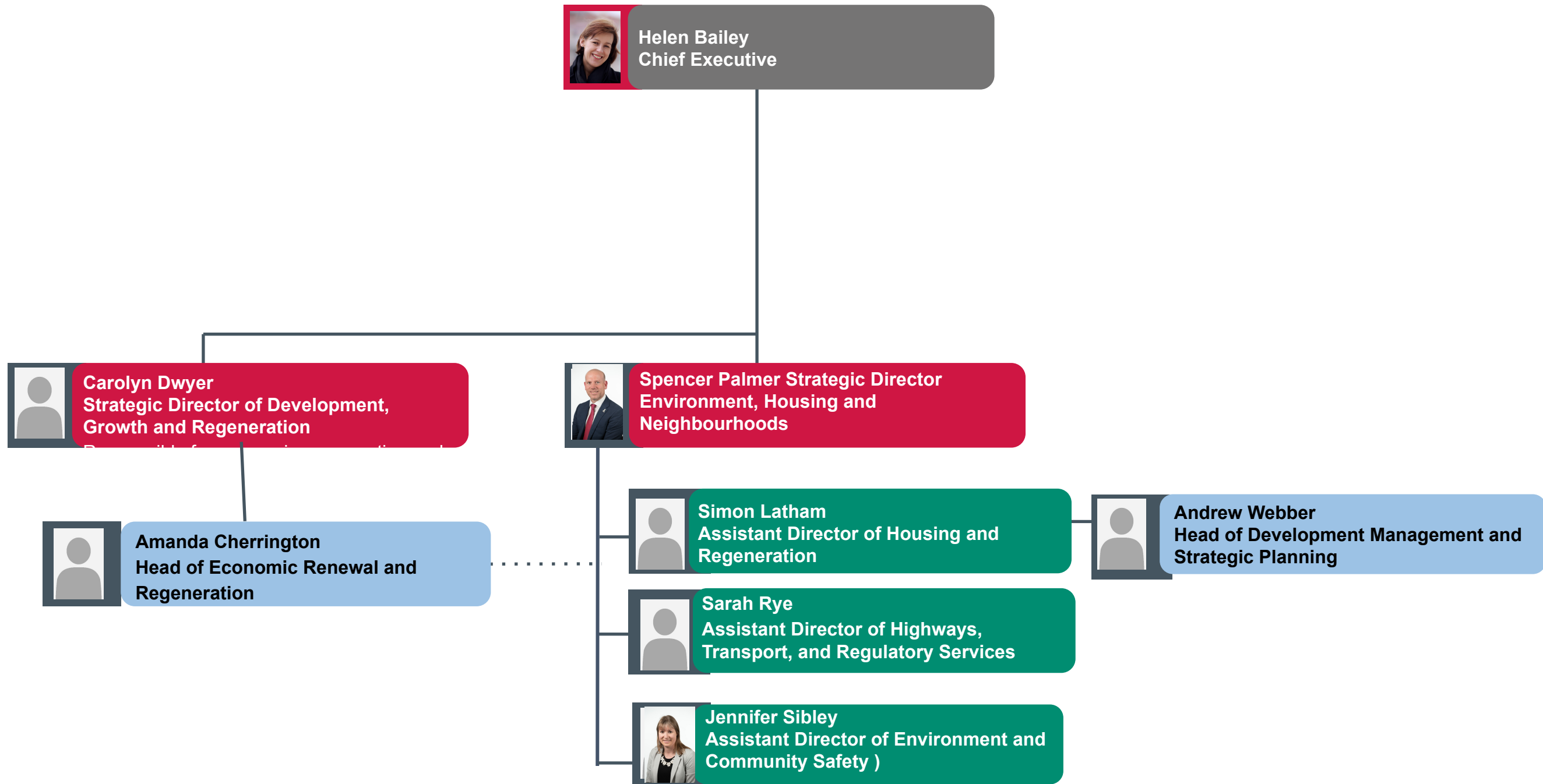
Ambitious for Sutton - Having the Right Capacity to Deliver



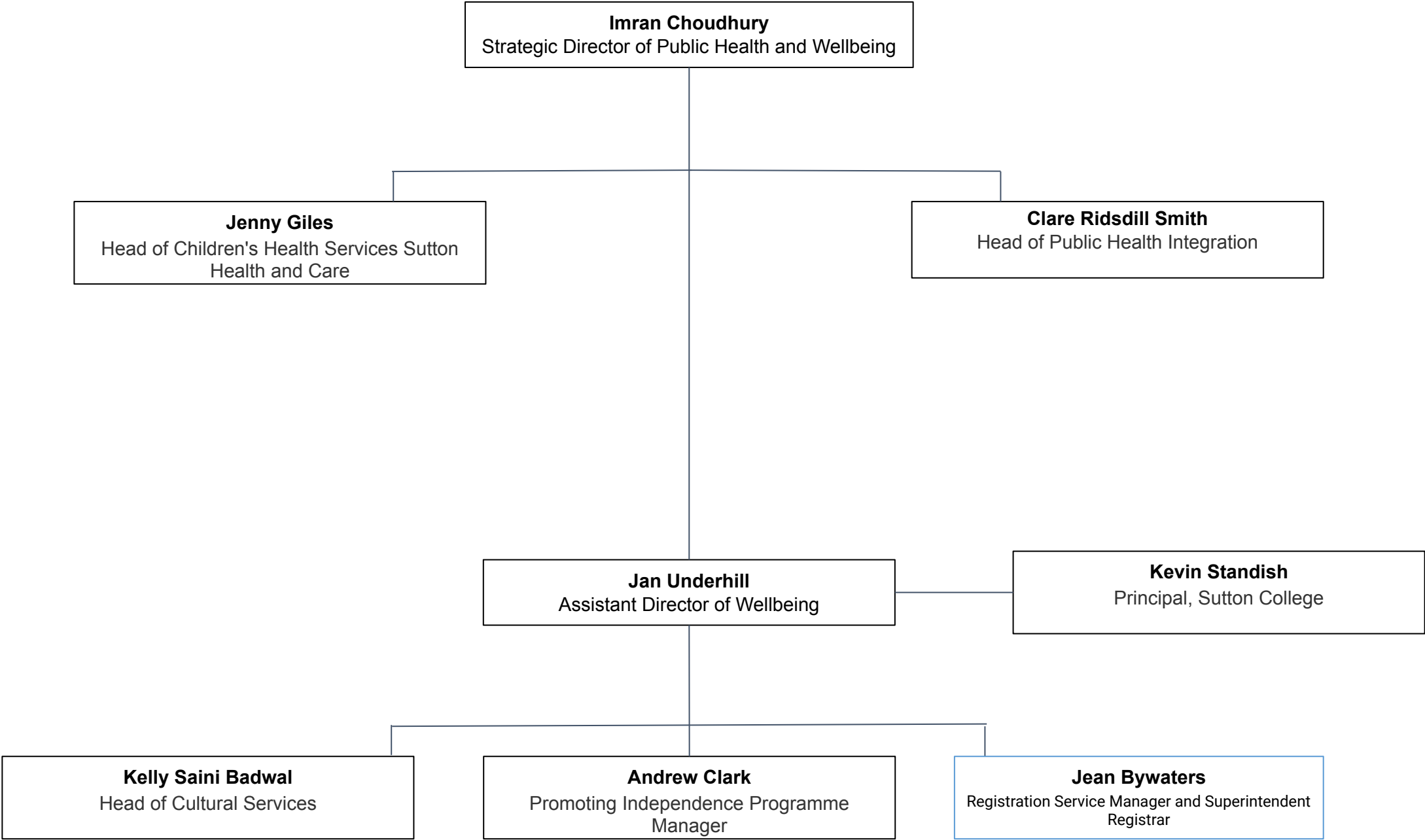
London Borough of Sutton – Organisational March 2023 (1 of 2)



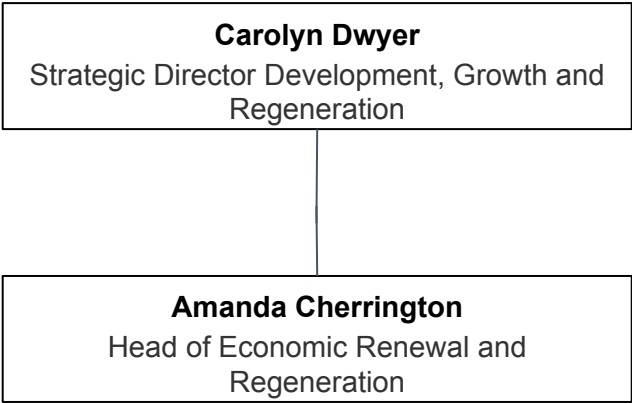
London Borough of Sutton – Organisational March 2023 (2 of 2)



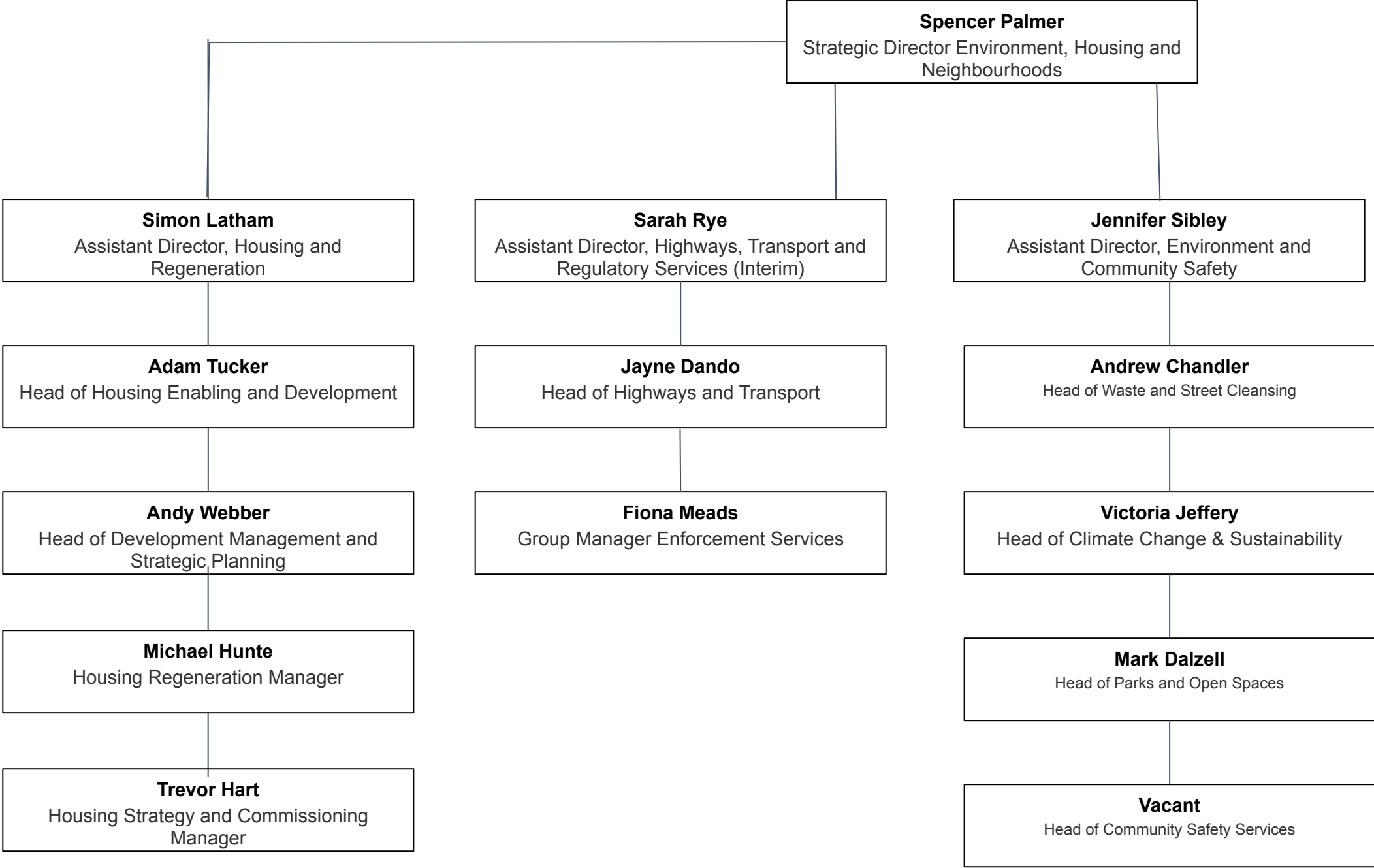
Public Health and Wellbeing



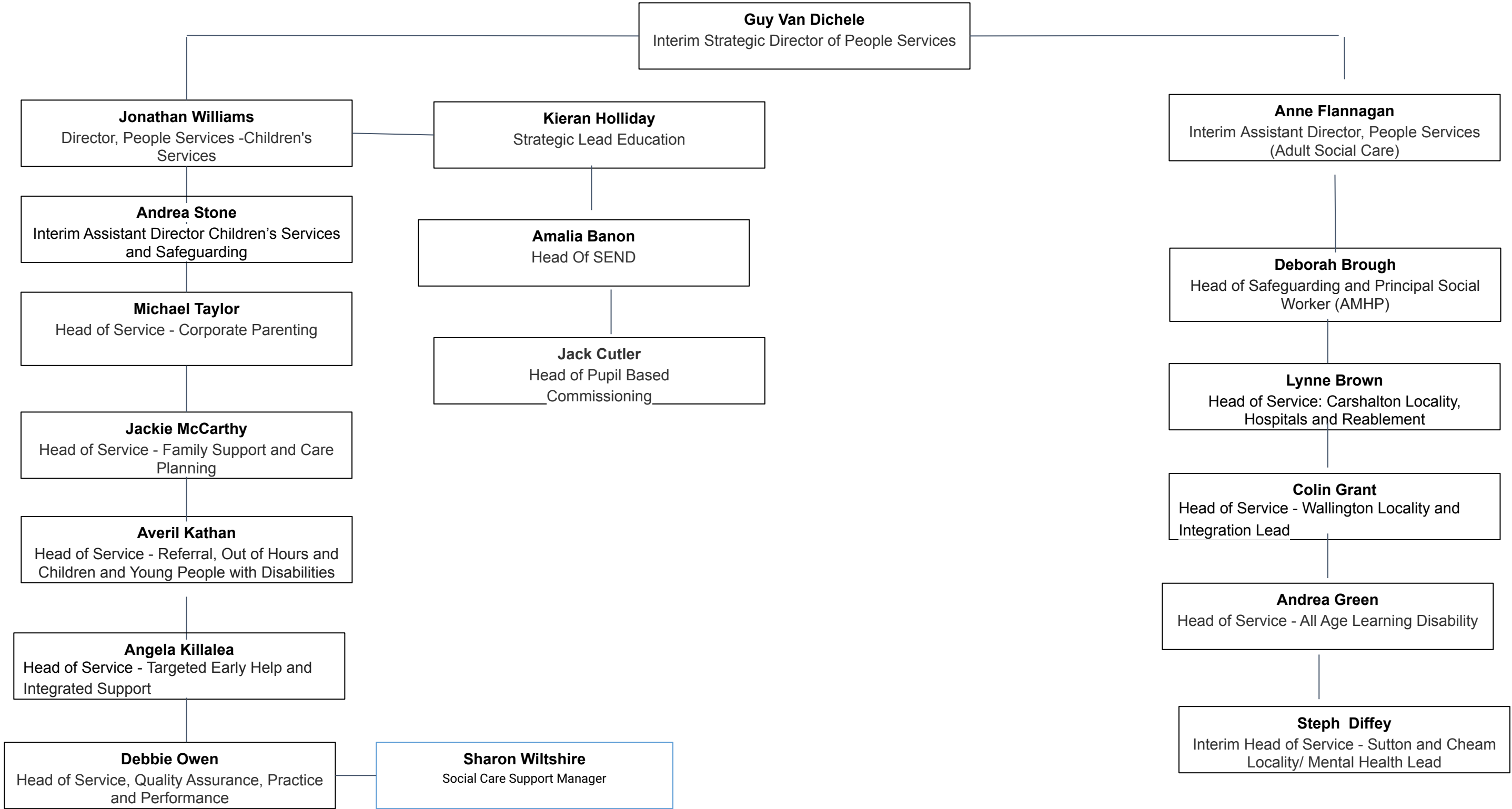
DEVELOPMENT, GROWTH AND REGENERATION



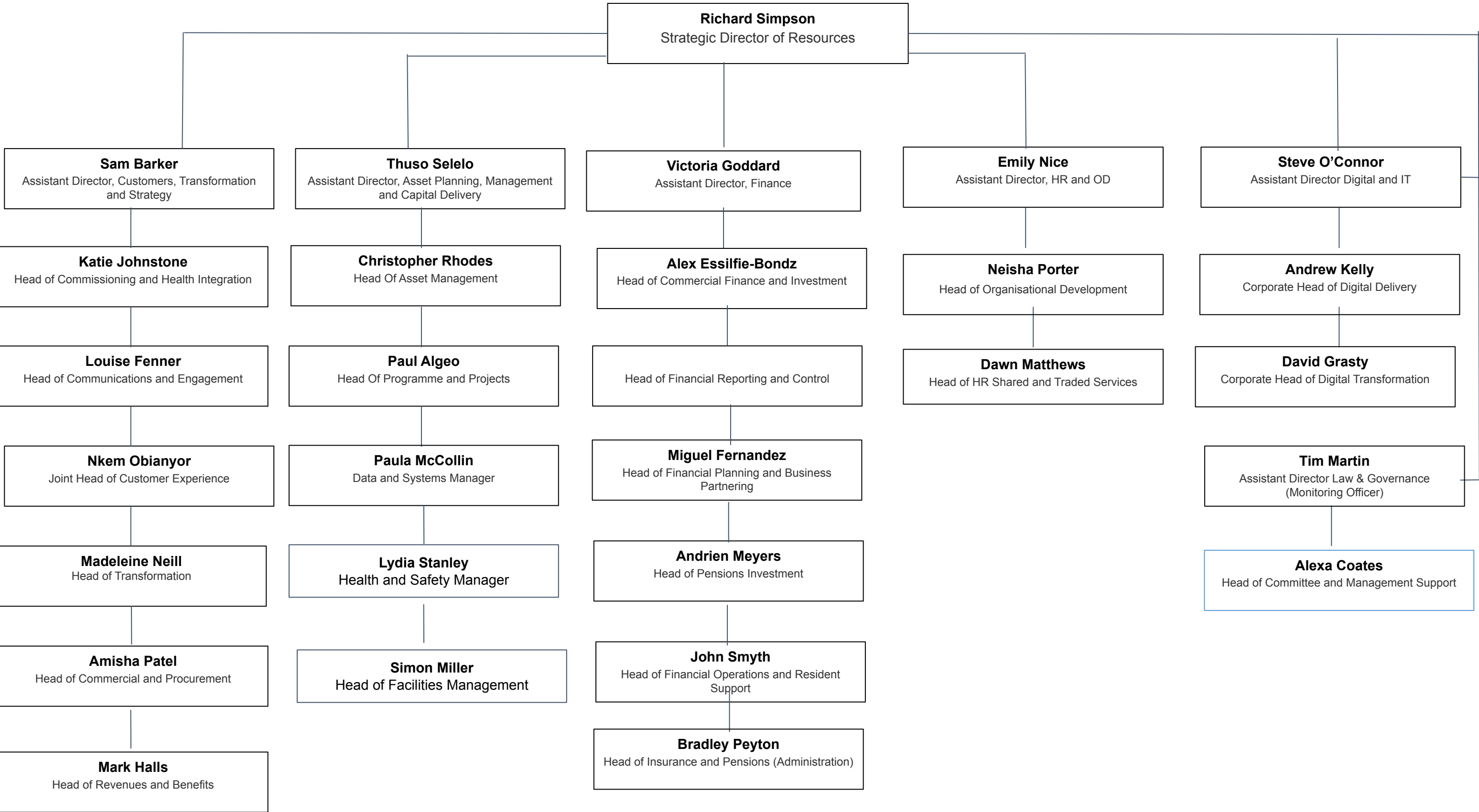
ENVIRONMENT, HOUSING and NEIGHBOURHOODS



PEOPLE SERVICES DIRECTORATE



RESOURCES DIRECTORATE



Helen Bailey - Chief Executive - helen.bailey@sutton.gov.uk

Imran Choudhury - Strategic Director of Public Health and Wellbeing - imran.choudhury@sutton.gov.uk

Jan Underhill - Assistant Director of Wellbeing - jan.underhill@sutton.gov.uk

Clare Ridsdill Smith - Head of Public Health Integration - clare.ridsdill-smith@sutton.gov.uk

Jenny Giles - Head of Children's Health Services Sutton Health and Care - jenny.giles@sutton.gov.uk

Richard Simpson - Strategic Director of Resources - richard.simpson@sutton.gov.uk

Thuso Selelo - Assistant Director of Asset Planning, Management and Capital Delivery - thuso.selelo@sutton.gov.uk

Steve O'Connor - Assistant Director of Digital and ICT - steve.oconnor@kingston.gov.uk

Victoria Goddard - Assistant Director of Finance - victoria.goddard@sutton.gov.uk

Sam Barker - Assistant Director of Customers, Transformation and Strategy - sam.barker@sutton.gov.uk

Tim Martin - Assistant Director Law & Governance (Monitoring Officer) - tim.martin@sutton.gov.uk

Emily Nice - Assistant Director of HR and OD - emily.nice@sutton.gov.uk

Spencer Palmer - Strategic Director of Environment, Housing and Regeneration - spencer.palmer@sutton.gov.uk

Simon Latham, - Assistant Director of Housing and Regeneration - simon.latham@sutton.gov.uk

Sarah Rye - Assistant Director of Highways, Transport, and Regulatory Services - sarah.rye@kingston.gov.uk

Jennifer Sibley - Assistant Director of Environment and Community Safety - jennifer.sibley@sutton.gov.uk

Andy Webber - Head of Development Management and Strategic Planning - andy.webber@sutton.gov.uk

Victoria Jeffery - Head of Climate Action and Sustainability - victoria.jeffery@sutton.gov.uk

Guy Van Dichele - Interim Strategic Director of People Services - guy.vandichele@sutton.gov.uk

Jonathan Williams - Director Children's Services - jonathan.williams@sutton.gov.uk

Andrea Stone - Assistant Director Children's Services and Safeguarding - andrea.stone@sutton.gov.uk

Anne Flanagan - Assistant Director Adult Social Care - Anne.Flanagan@sutton.gov.uk

Kieran Holliday - Strategic Lead Education - kieran.holliday@sutton.gov.uk

Jack Cutler - Head of Pupil Based Commissioning - jack.cutler@sutton.gov.uk

Carolyn Dwyer - Strategic Director of Development, Growth and Regeneration - carolyn.dwyer@sutton.gov.uk

Amanda Cherrington - Head of Economic Renewal and Regeneration - amanda.cherrington@sutton.gov.uk

Martha Matheou - Head of Electoral Services - martha.matheou@sutton.gov.uk