

RECYCLING NEWS

December 2025



Your new recycling and waste service

Efficient collections

Recycling and waste collection day changes for some households in Sutton improved the efficiency of collection routes.

Cleaner streets

Enhanced cleaning schedules mean busier areas get extra attention, and night-time teams clear fly-tips. Sarah (pictured), is one of Veolia's street sweepers who picks up litter and makes sure our streets are spotless.



Care in the community



Veolia has committed to funding more community projects and increasing local recruitment. Their Sustainability Fund offers grants of up to £1,000 for environmental and community initiatives and the Veolia Orchard supports schools and community groups with plants for green spaces. Funding will reopen in spring 2026 at: www.veolia.co.uk/communities

Helping residents to recycle more

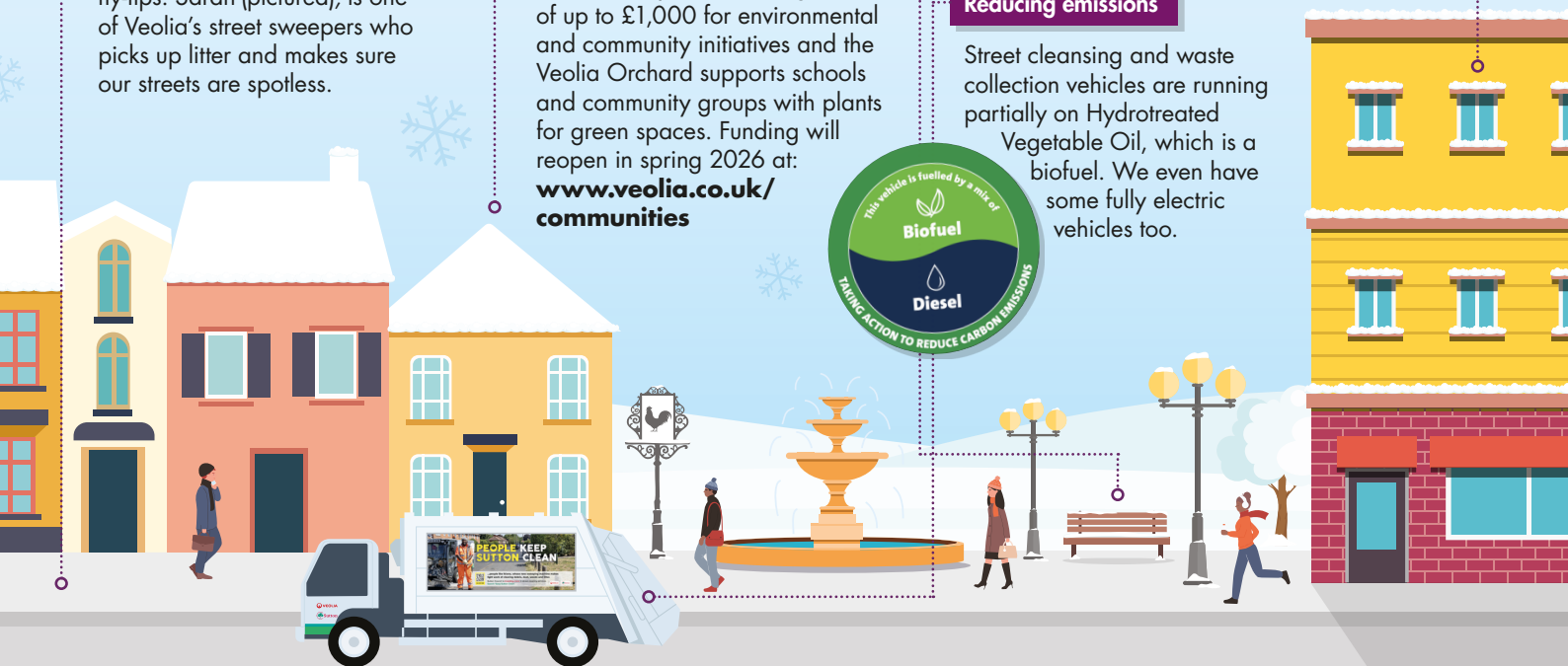
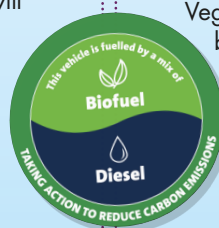
Over 100 flats above shops across Sutton are trialling food waste recycling for the first time! This trial will help us with a wider roll out of this service.



Did you know, all Sutton households are now able to book a free small batteries, electricals and textiles collection right from their doorstep? Book your collection at: www.sutton.gov.uk/w/small-items-recycling-collection-1

Reducing emissions

Street cleansing and waste collection vehicles are running partially on Hydrotreated Vegetable Oil, which is a biofuel. We even have some fully electric vehicles too.



What goes where?

The table below summarises the two collection services received by the vast majority of properties in the borough. Containers and collection frequencies may differ for some flats and houses with no front garden. Visit www.sutton.gov.uk/recycling for details.

View and download your personalised 2026 collection calendar.

Use the 'Check your bin collection days' tool at www.sutton.gov.uk/recycling

Stick me on your fridge so that you can refer to this helpful recycling information all year round!



Food waste



✓ All cooked and uncooked food



✓ Dairy products: cheese and eggs



✓ Fruit and vegetable peelings



✓ Tea bags and coffee grounds



✓ Meat and fish bones

✗ No plastic bags
(use compostable liners or newspapers to line your caddy)

✗ No nappies

Container

Houses

Collected every week



Flats



Plastics, glass, cans and cartons



✓ Plastic bottles



✓ Plastic pots, tubs and trays etc.



✓ Glass jars and bottles



✓ Cans, tins, aerosols and tin foil



✓ Food and drink cartons

✗ No plastic bags
✗ No plastic film
✗ No rigid plastic
(toys, buckets etc.)

Container

Houses

Collected every 2 weeks



Flats



Rinse out
these items

Paper and card



✓ Newspapers and magazines



✓ Card and cardboard



✓ Toilet/kitchen roll tubes



✓ Egg boxes

✗ No plastic bags
✗ No food and drink cartons
✗ No tissues
✗ No shiny or glittery wrapping paper

Container

Houses

Collected every 2 weeks



Flats



Paper
and card
must be
clean and
dry

Non-recyclable waste



✓ Non-recyclable rubbish



✓ Food-stained cardboard
(i.e. dirty pizza boxes)



✓ Plastic bags and film



✓ Polystyrene



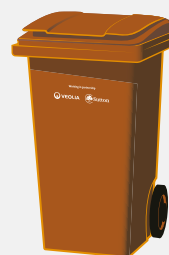
✓ Nappies

✗ No recycling or food waste
✗ No electrical items
or batteries
✗ No gas canisters

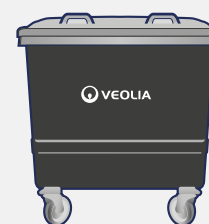
Container

Houses

Collected every 2 weeks



Flats

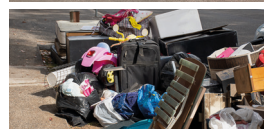


How to let us know if there's a problem



My collection was missed

Go to www.sutton.gov.uk/recycling and fill in your address and the material which was missed. Our crews will then be alerted to return to collect.



There's a fly-tip down the road

Report it at www.sutton.gov.uk/flytipping and our crews will visit the location to remove the fly-tip.



There's an overflowing street litter bin

Report it at www.sutton.gov.uk/report and our crews will empty it.



I want to visit the Kimpton Park Way Household Reuse and Recycling Centre

Book an appointment at www.sutton.gov.uk/hrrc



I want to make a complaint or leave a compliment

Fill out the form at www.sutton.gov.uk/-/make-a-complaint-or-leave-feedback



A sustainable Christmas

The festive season is a wonderful time of year, but it can also generate a lot of waste. Here are our top tips to reduce, reuse and recycle this holiday season.

REDUCE: Festive food planning



Did you know that planning ahead is the secret to a waste-free Christmas? Start by writing down how many meals you'll need for how many people over the festive period. Check your cupboards and fridge-freezer first – you might already have ingredients you can use!

Write a strict shopping list and stick to it – resist those tempting in-store displays!

Don't forget to factor in leftovers. Turkey can stretch across multiple meals when paired with jacket potatoes or in sandwiches. For more festive recipe ideas to love your leftovers, go to www.lovefoodhatewaste.com

REUSE: Green gifts



Looking for unique gifts without breaking the bank? Visit the Community Reuse Shop at Kimpton Park Way Household Reuse and Recycling Centre (HRRRC)! You'll find pre-loved treasures including bicycles, books, electronics and household items like hoovers – all in great condition.

Reusing items is even better for the environment than recycling because it requires no energy or processing.

Don't forget to book your visit to the HRRRC. When you arrive, you can drop off clean, reusable items for resale, and browse the Community Reuse Shop for hidden gems yourself. You might just find something special! Book your visit at www.sutton.gov.uk/hrrc

RECYCLE: Not just for Christmas



Scrunch your wrapping paper: Reduce your impact by choosing plain, matte wrapping paper that can be recycled, compared to paper with a plastic coating. Shiny or glittery paper cannot be recycled, and must go in your general waste instead. Not sure? Just do the scrunch test – if it doesn't bounce back when scrunched into a ball, it can be recycled!

Give the gift of safety: Keep broken fairy lights and batteries out of your bins – Veolia reports one preventable fire every day caused by dangerous items like these. These fires could happen in the back of collection vehicles on residential roads, putting crews and residents in danger.

You can take batteries and electrical items to **Kimpton Park Way Household Reuse and Recycling Centre**, or book a **Small items recycling collection** for these items for free. Don't forget to book online, at www.sutton.gov.uk/hrrc or www.sutton.gov.uk/w/small-items-recycling-collection-1



Christmas and New Year Collections

Recycling and waste collections will change over the festive season:

Usual Collection Day	Revised Collection Day*	Change
Thursday 25 December 2025	Saturday 27 December 2025	2 days later
Friday 26 December 2025	Monday 29 December 2025	3 days later
Monday 29 December 2025	Tuesday 30 December 2025	1 days later
Tuesday 30 December 2025	Wednesday 31 December 2025	1 day later
Wednesday 31 December 2025	Friday 2 January 2026	2 days later
Thursday 1 January 2026	Saturday 3 January 2026	2 days later
Friday 2 January 2026	Monday 5 January 2026	3 days later
Monday 5 January 2026	Tuesday 6 January 2026	1 days later
Tuesday 6 January 2026	Wednesday 7 January 2026	1 day later
Wednesday 7 January 2026	Thursday 8 January 2026	1 day later
Thursday 8 January 2026	Friday 9 January 2026	1 day later
Friday 9 January 2026	Saturday 10 January 2026	1 day later

Collections return to normal from Monday 12 January 2026. Please remember to put your bins out by 6am on your collection day.

*This table demonstrates the collection arrangements for the vast majority of households in Sutton, but flats above shops have a slightly different schedule. To double check the next collection for your household, please go to www.sutton.gov.uk/recycling



Garden waste

If you're a subscriber to the garden waste collection service, don't forget that the service will break for four weeks over Christmas and the New Year period from 30 December 2025 to 26 January 2026. This time of year sees a drop in the amount of garden waste collected and enables crews to support the collection of extra recycling and waste generated over the festive period. This includes the collection of Christmas trees. For more information, go to www.sutton.gov.uk/gardenwaste



Kimpton Park Way Household Reuse and Recycling Centre (HRRC) opening hours

The HRRC will be open normal hours (9am - 5pm, Monday - Saturday / 9am - 2pm Sunday) over the festive period except on the following days:

Christmas Eve:

9.00am - midday

Christmas Day:

Closed

Boxing Day:

Closed

New Year's Day:

Closed

Remember that you need to book ahead before you visit the HRRC. Please visit www.sutton.gov.uk/hrrc to book your time slot.



Christmas Tree Collections

Want your real tree to be collected? Put it out by **6am from Tuesday 30 December 2025** and it will be collected within a four week period.

Remember to remove all decorations, pots, etc. Put your tree close to the front boundary of your property, visible to collection crews and so it won't block the pavement. If you live in a flat, put your tree outside the bin store but don't block access to it.

Alternatively you can:

- Take your tree to be composted at the HRRC
- Leave it next to your rubbish bin on your collection day (it will not be recycled)
- Chop it up to create a winter shelter for animals in your garden or add it to your compost heap

